

V O L V O



Volvo Excavators 37.6-39.6 t / 82,890-87,460 lb 339 hp

EC370

Volvo Construction Equipment

EC370

A classic model that can help you lower your TCO
without losing your edge in productivity.



Your fuel efficiency edge

EC370 is a classic excavator model used on general construction sites across the globe. Thanks to its improved fuel efficiency and ease of service, you can enjoy even better Total Cost of Ownership. Featuring the very latest in engineering excellence, the machine is designed to deliver outstanding levels of comfort, safety, versatility, efficiency and productivity.



Operator comfort

- More precise controls
- Quieter cab
- Personalized settings for greater comfort
- ROPS cab as standard



Fuel Efficiency

- Up to 15% improvement
- Engine pump optimization with engine speeds as low as 1,600 rpm
- Smart MCV



Smart View with Obstacle Detection

- Increased safety onsite and for the operator
- Radar warns for items outside the screen
- HD screen
- Human identifying alarm separate from other obstacles



Productivity

- Volvo Active Control
- Dig Assist with On-Board Weighing
- Electro-hydraulic system
- Boom/Swing & Boom/Travel priority functions



Serviceability

- Ground level access for service
- Long service intervals
- Grouped filters and lubrication points
- Quick and easy oil changes

Volvo EC370 in detail

Engine

The next-generation Volvo diesel engine uses Volvo Advanced Combustion Technology (V-ACT) to deliver lower emissions, superior performance and fuel efficiency. The engine uses precise, high pressure fuel injectors, turbo charger and intercooler, and electronic engine controls to optimize machine performance.

Air Filter: 3-stage and precleaner

Automatic Idling System: Reduces engine speed to idle when the levers and pedals are not activated resulting in less fuel consumption and low cab noise levels.

Engine	Volvo	Volvo D13J
Max power at	r/min (r/s)	1,600 (27)
Net, ISO 9249/SAE J1349	kW (hp)	252 (338)
Gross, ISO 14396/SAE J1995	kW (hp)	253 (339)
Max torque	Nm (ft lbf)	1,975 (1,457)
at engine speed	r/min (r/s)	1,200 (20)
No. of cylinders		6
Displacement	l (in ³)	12.8 (781)
Bore	mm (in)	131 (5.16)
Stroke	mm (in)	158 (6.22)

Electrical System

High-capacity electrical system that is well protected. Waterproof double-lock harness plugs are used to secure corrosion-free connections. The main relays and solenoid valves are shielded to prevent damage. The master switch is standard.

Contronics provides advanced monitoring of machine functions and important diagnostic information.

Voltage	V	24
Batteries	V	2 x 12
Battery capacity	Ah	200
Alternator	V/A	28 V / 180 A

Undercarriage

The undercarriage has a robust X-shaped frame. Greased and sealed track chains are standard.

Track shoes		2 x 48
Link pitch	mm (in)	216 (8.5)
Shoe width	mm (in)	750 (30)
Shoe width, triple grouser	mm (in)	600 / 700 / 800 / 900 (24 / 28 / 32 / 36)
Shoe width, triple grouser (HD)	mm (in)	600 (24)
Shoe width, double grouser	mm (in)	600 (24)
Bottom rollers		2 x 8
Top rollers		2 x 2

Hydraulic System

The hydraulic system, also known as the "Automatic Sensing Work Mode," is designed for high-productivity, high-digging capacity, high-maneuvering precision and excellent fuel economy. The summation system, boom, arm and swing priority along with boom and arm regeneration provides optimum performance.

The following important functions are included in the system:

Summation system: Combines the flow of both hydraulic pumps to ensure quick cycle times and high productivity.

Boom priority: Gives priority to the boom operation for faster raising when loading or performing deep excavations.

Arm priority: Gives priority to the arm operation for faster cycle times in leveling and for increased bucket filling when digging.

Swing priority: Gives priority to swing functions for faster simultaneous operations.

Regeneration system: Prevents cavitation and provides flow to other movements during simultaneous operations for maximum productivity.

Power boost: All digging and lifting forces are increased.

Holding valves: Boom and arm holding valves prevent the digging equipment from creeping.

Main pump: 2 x Variable displacement axial piston pumps

Maximum flow	l/min (gal/min)	2 x 288 (2 x 76)
--------------	-----------------	------------------

Pilot pump: Gear pump

Maximum flow	l/min (gal/min)	26.7 (7.1)
--------------	-----------------	------------

Max. pressure

Implement	MPa (psi)	32.4 / 35.3 (4,690 / 5,120)
Travel circuit	MPa (psi)	35.3 (5,120)
Slew circuit	MPa (psi)	25.5 (3,700)
Pilot circuit	MPa (psi)	3.9 (570)

Hydraulic Motors

Travel: Variable displacement axial piston motor with mechanical brake
Swing: Fixed displacement piston motor with mechanical brake

Hydraulic Cylinders

Boom		2
Bore x Stroke	ø x mm (ø x in)	160 x 1 530 (6.3 x 60.2)
Arm		1
Bore x Stroke	ø x mm (ø x in)	175 x 1 700 (6.9 x 66.9)
Bucket		1
Bore x Stroke	ø x mm (ø x in)	145 x 1 285 (5.7 x 50.6)

Swing system

The swing system uses an axial piston motors, driving a planetary gearbox for maximum torque. An automatic holding brake and anti-rebound valve are standard.

Max. slew speed	r/min	9.8
Max. slew torque	kNm (ft lbf)	119 (87,770)

Travel System

Each track is powered by an automatic two-speed shift travel motor. The track brakes are multi-disc, spring-applied and hydraulic released. The travel motor, brake and planetary gears are well protected within the track frame.

Max. drawbar pull	kN (lbf)	277 (62,181)
Max. travel speed (low)	km/h (mi/h)	3.3 (2.1)
Max. travel speed (high)	km/h (mi/h)	5.1 (3.2)
Gradeability	°	35

Cab

The operator's cab has easy access via a wide door opening. The cab is supported on hydraulic dampening mounts to reduce shock and vibration levels. These along with sound absorbing lining provide low noise levels. The cab has excellent all-round visibility. The front windshield can easily slide up into the ceiling, and the lower front glass can be removed and stored in the side door.

Integrated air-conditioning and heating system: The pressurized and filtered cab air is supplied by an automatically-controlled fan. The air is distributed throughout the cab from 10vents.

Ergonomic operator's seat: The adjustable seat and joystick console move independently to accommodate the operator. The seat has nine different adjustments plus a seat belt for the operator's comfort and safety.

Sound Level

Sound level in cab according to ISO 6396

L _{pA}	dB	71
-----------------	----	----

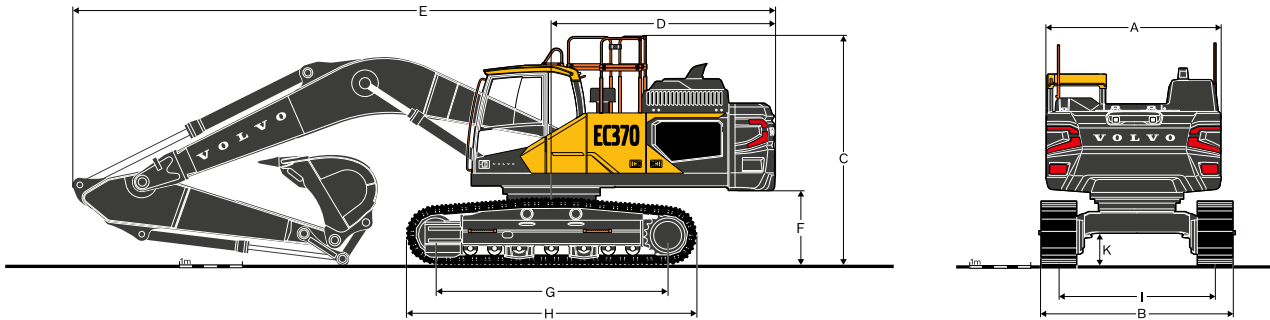
External sound level according to ISO 6395 and EU Directive 2000/14/EC

L _{WA}	dB	106
-----------------	----	-----

Service Refill

Fuel tank	l (gal)	600 (159)
DEF/AdBlue® tank	l (gal)	45 (12)
Hydraulic system, total	l (gal)	440 (116)
Hydraulic tank	l (gal)	200 (53)
Engine oil	l (gal)	55 (15)
Engine coolant	l (gal)	60 (16)
Slew reduction unit	l (gal)	6.5 (1.7)
Travel reduction unit	l (gal)	2 x 6.8 (2 x 1.8)

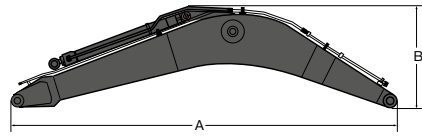
Specifications



DIMENSIONS

Description	Unit	EC370F			
		6.45 m (21'2")			
Boom		3.2 m	10'6"	3.9 m	12'10"
Arm					
A. Overall width of superstructure					
with walkway, handrail	mm ft in	3,400	11'2"	3,400	11'2"
without walkway, handrail	mm ft in	2,990	9'10"	2,990	9'10"
B. Overall width of undercarriage					
600 mm shoes	mm ft in	3,190	10'6"	3,190	10'6"
700 mm shoes	mm ft in	3,290	10'10"	3,290	10'10"
800 mm shoes	mm ft in	3,390	11'1"	3,390	11'1"
900 mm shoes	mm ft in	3,490	11'5"	3,490	11'5"
750 mm shoes	mm ft in	3,340	10'11"	3,340	10'11"
C. Overall height of					
Cab	mm ft in	3,240	10'8"	3,240	10'8"
FOG	mm ft in	3,330	10'11"	3,330	10'11"
Engine hood	mm ft in	3,000	9'10"	3,000	9'10"
Diffuser	mm ft in	3,240	10'8"	3,240	10'8"
Guardrail, unfolded	mm ft in	3,590	11'9"	3,590	11'9"
Guardrail, folded	mm ft in	3,110	10'2"	3,110	10'2"
Handrail, unfolded	mm ft in	3,350	11'0"	3,350	11'0"
Handrail, folded	mm ft in	3,110	10'2"	3,110	10'2"
With Boom/Arm/Bucket (with hydraulic hoses)	mm ft in	3,720	12'2"	3,840	12'7"
With Boom/Arm (with hydraulic hoses)	mm ft in	3,640	11'11"	3,840	12'7"
With Boom (with hydraulic hoses)	mm ft in	3,020	9'11"	3,020	9'11"
D. Tail swing radius					
	mm ft in	3,600	11'10"	3,600	11'10"
E. Overall length of					
With Boom/Arm/Bucket	mm ft in	11,260	36'11"	11,270	37'0"
With Boom/Arm	mm ft in	11,260	36'11"	11,270	37'0"
With Boom	mm ft in	10,010	32'10"	10,010	32'10"
F. Counterweight clearance without shoe grouser					
	mm ft in	1,150	3'9"	1,150	3'9"
G. Tumbler length					
	mm ft in	4,020	13'2"	4,020	13'2"
H. Track length					
	mm ft in	4,940	16'2"	4,940	16'2"
I. Track gauge					
	mm ft in	2,590	8'6"	2,590	8'6"
K. Min. ground clearance *					
	mm ft in	500	1'8"	500	1'8"

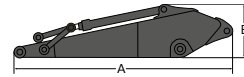
* without shoe grouser



BOOM

Description	Unit		6.45 m GP	21'2" GP	6.45 m HD	21'2" HD
Length	mm	ft in	6,710	22'0"	6,710	22'0"
Height	mm	ft in	1,690	5'7"	1,690	5'7"
Width	mm	ft in	820	2'8"	820	2'8"
Weight*	kg	lb	3,380	7,450	3,690	8,140

* Includes cylinder, piping and pins

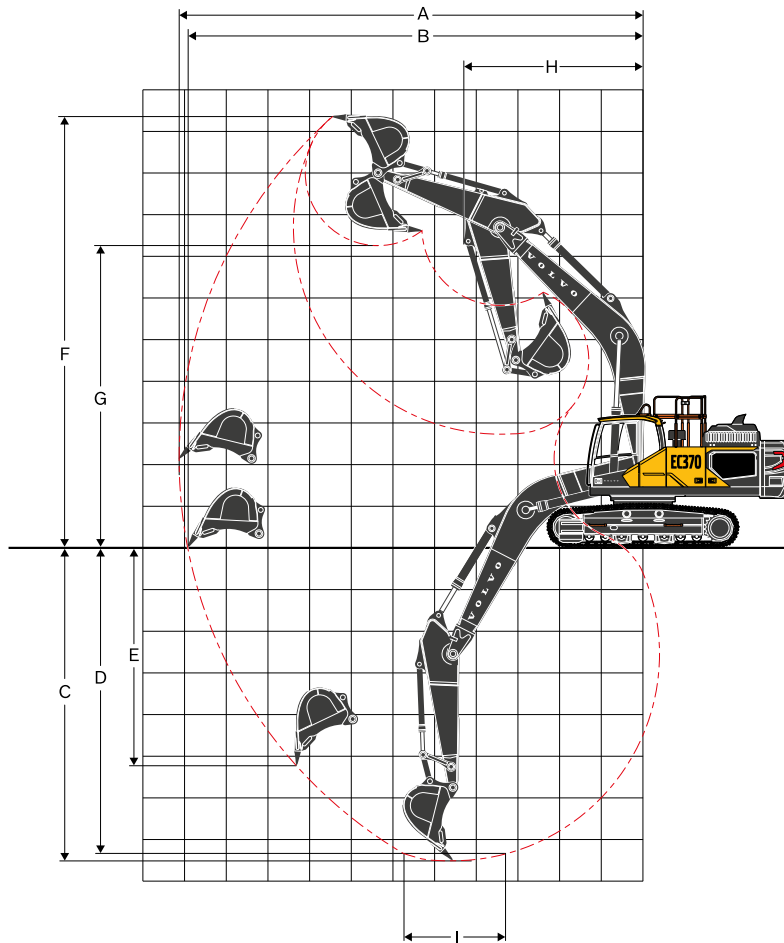


ARM

Description	Unit		3.2 m GP	10'6" GP	3.2 m HD	10'6" HD	3.9 m GP	12'10" GP
Length	mm	ft in	4,350	14'3"	4,350	14'3"	5,050	16'7"
Height	mm	ft in	1,090	3'7"	1,090	3'7"	1,110	3'8"
Width	mm	ft in	440	1'5"	440	1'5"	440	1'5"
Weight*	kg	lb	2,030	4,480	2,150	4,740	2,380	5,250

* Includes cylinder, piping and pins

Specifications



WORKING RANGES

Description	Unit		EC370F			
Boom	m		6.45 m (21'2")			
Arm	m	ft in	3.2 m	10'6"	3.9 m	12'10"
Bucket radius	mm	ft in	1,842	6'1"	1,842	6'1"
A. Max Digging Reach	mm	ft in	11,220	36'10"	11,855	38'11"
B. Max Digging Reach on the Ground	mm	ft in	11,010	36'1"	11,665	38'3"
C. Max Digging Depth	mm	ft in	7,590	24'11"	8,290	27'2"
D. Max Digging Depth (2.44 m (8'0") level)	mm	ft in	7,425	24'4"	8,145	26'9"
E. Max Vertical Wall Digging Depth	mm	ft in	5,510	18'1"	6,110	20'1"
F. Max Cutting Height	mm	ft in	10,370	34'0"	10,640	34'11"
G. Max Dumping Height	mm	ft in	7,140	23'5"	7,415	24'4"
H. Min front slew radius	mm	ft in	4,290	14'1"	4,305	14'1"

DIGGING FORCES WITH DIRECT FIT BUCKET

Bucket radius		mm	ft in	1,625	5'4"	1,625	5'4"
Breakout force - bucket	SAE J1179, Normal	kN	lbf	198	44,512	197	44,287
	SAE J1179, Power Boost	kN	lbf	216	48,559	215	48,334
	ISO 6015, Normal	kN	lbf	222	49,908	222	49,908
	ISO 6015, Power Boost	kN	lbf	242	54,404	242	54,404
Tearout force - digger arm	SAE J1179, Normal	kN	lbf	162	36,419	141	31,698
	SAE J1179, Power Boost	kN	lbf	177	39,791	154	34,621
	ISO 6015, Normal	kN	lbf	166	37,318	144	32,372
	ISO 6015, Power Boost	kN	lbf	181	40,690	157	35,295

Rotation angle, bucket

°

178

178

*Machine with pin-on bucket

GROUND PRESSURE

Description	Shoe width		Operating weight		Ground pressure		Overall width		Operating weight		Ground pressure		Overall width	
	mm	in	kg	lb	kPa	psi	mm	ft in	kg	lb	kPa	psi	mm	ft in
Triple grouser	600	24	37,600	82,910	70.8	10.3	3,190	10'6"	37,950	83,680	71.4	10.4	3,190	10'6"
	600 (HD)	24 (HD)	37,650	83,020	70.9	10.3	3,190	10'6"	38,000	83,790	71.5	10.4	3,190	10'6"
	700	28	38,230	84,300	61.7	8.9	3,290	10'10"	38,580	85,070	62.2	9.0	3,290	10'10"
	800	32	38,620	85,160	54.5	7.9	3,390	11'1"	38,970	85,930	55.0	8.0	3,390	11'1"
	900	36	39,010	86,020	48.9	7.1	3,490	11'5"	39,360	86,790	49.4	7.2	3,490	11'5"
Double grouser	600	24	38,330	84,520	72.1	10.5	3,190	10'6"	38,680	85,290	72.8	10.6	3,190	10'6"
Single grouser	750	30	38,810	85,580	58.4	8.5	3,340	10'11"	39,160	86,350	59.0	8.5	3,340	10'11"
			EC370F L, 6.45 m (21'2") GP boom, 3.2 m (10'6") GP arm, 2,000 kg (4,410 lb) bucket, 6,700 kg (14,770 lb) counterweight						EC370F L, 6.45 m (21'2") GP boom, 3.9 m (12'10") GP arm, 2,000 kg (4,410 lb) bucket, 6,700 kg (14,770 lb) counterweight					
Description	Shoe width		Operating weight		Ground pressure		Overall width		Operating weight		Ground pressure		Overall width	
	mm	in	kg	lb	kPa	psi	mm	ft in	kg	lb	kPa	psi	mm	ft in
Triple grouser	600	24	38,030	83,860	71.6	10.4	3,190	10'6"	38,260	84,360	72.0	10.4	3,190	10'6"
	600 (HD)	24 (HD)	38,080	83,970	71.7	10.4	3,190	10'6"	38,310	84,470	72.1	10.4	3,190	10'6"
	700	28	38,660	85,250	62.4	9.0	3,290	10'10"	38,890	85,750	62.7	9.1	3,290	10'10"
	800	32	39,050	86,110	55.1	8.0	3,390	11'1"	39,280	86,610	55.4	8.0	3,390	11'1"
	900	36	39,440	86,970	49.5	7.2	3,490	11'5"	39,670	87,470	49.8	7.2	3,490	11'5"
Double grouser	600	24	38,760	85,740	73.0	10.6	3,190	10'6"	38,990	85,970	73.4	10.6	3,190	10'6"
Single grouser	750	30	39,240	86,520	59.1	8.6	3,340	10'11"	39,470	87,030	74.3	10.8	3,340	10'11"
			EC370F L, 6.45 m (21'2") HD boom, 3.2 m (10'6") HD arm, 2,000 kg (4,410 lb) bucket, 6,700 kg (14,770 lb) counterweight						EC370F L, 6.45 m (21'2") HD boom, 3.9 m (12'10") GP arm, 2,000 kg (4,410 lb) bucket, 6,700 kg (14,770 lb) counterweight					

BUCKET SELECTION GUIDE

Bucket type		Capacity		Cutting width		Weight		Teeth	EC370F L		
		m ³	yd ³	mm	ft in	kg	lb		EA	800 mm (32") shoe, 6,700 kg (14,770 lb) counterweight	
										6.45 m (21'2") GP boom	
								3.2 m (10'6") GP arm	3.9 m (12'10") GP arm		
Direct fit Buckets	Fixed Ditching	950	1.24	1,500	4'11"	841	1,854	Non	C	C	
	High Capacity	2,440	3.19	1,600	5'3"	1,796	3,959	5	C	B	
	General Purpose	870	1.14	750	2'6"	1,281	2,823	3	C	C	
		1,000	1.31	900	2'11"	1,366	3,012	4	C	C	
		1,180	1.54	1,050	3'5"	1,458	3,213	4	C	C	
		1,420	1.86	1,200	3'11"	1,610	3,549	5	C	C	
		1,670	2.18	1,350	4'5"	1,724	3,802	5	C	C	
	Heavy Duty	1,920	2.51	1,500	4'11"	1,865	4,111	5	C	C	
		870	1.14	750	2'6"	1,366	3,012	3	D	D	
		1,000	1.31	900	2'11"	1,301	2,869	4	D	D	
		1,180	1.54	1,050	3'5"	1,470	3,241	4	D	D	
		1,420	1.86	1,200	3'11"	1,713	3,776	5	D	D	
	Extreme Duty	1,670	2.18	1,350	4'5"	1,877	4,139	5	D	D	
		1,920	2.51	1,500	4'11"	2,004	4,418	5	D	C	
		2,330	3.05	1,780	5'10"	2,617	5,769	4	B	X	

Please consult with your Volvo dealer for the proper match of buckets and attachments to suit the application.
The recommendations are given as a guide only, based on typical operation conditions.
Bucket capacity based on ISO 7451, heaped material with a 1:1 angle of repose.

Maximum material density
D: 2,100 kg/m³ (3,540 lb/yd³)
C: 1,800 kg/m³ (3,035 lb/yd³)
B: 1,500 kg/m³ (2,525 lb/yd³)
A: 1,200 kg/m³ (2,020 lb/yd³)
X: Not recommended

Specifications

LIFTING CAPACITY EC370F L

Lifting capacity at the arm end without bucket.

For lifting capacity including bucket, simply subtract actual weight of the direct fit bucket or the bucket with quick coupler from the following values.

	Lifting hook related to ground level	1.5 m / 5 ft		3.0 m / 10 ft		4.5 m / 15 ft		6.0 m / 20 ft		7.5 m / 25 ft		9.0 m / 30 ft		Max.			
		Along UC	Across UC	Along UC	Across UC	Along UC	Across UC	Along UC	Across UC	Along UC	Across UC	Along UC	Across UC	Along UC	Across UC		
Boom : 6.45 m (21'2") GP Arm : 3.2 m (10'6") GP Shoe : 800 mm (32") CWT : 6,700 kg (14,770 lb)	7.5 m kg									*9,380	8,080			*8,220	7,780	7.7 m	
	25 ft lb													*18,190	17,490	24.9 ft	
	6.0 m kg									*9,580	8,010			*8,010	6,450	8.5 m	
	20 ft lb									*21,020	17,240			*17,650	14,360	27.8 ft	
	4.5 m kg					*14,450	*14,450	*11,710	10,930	*10,350	7,780	8,800	5,810	*8,080	5,730	9.1 m	
	15 ft lb					*31,030	*31,030	*25,360	23,600	*22,570	16,770			*17,790	12,700	29.7 ft	
	3.0 m kg					*18,580	15,690	*13,690	10,350	*11,380	7,490	8,670	5,680	8,180	5,360	9.3 m	
	10 ft lb					*39,940	33,880	*29,620	22,350	24,730	16,150	18,650	12,230	18,060	11,840	30.6 ft	
	1.5 m kg					*21,630	14,740	*15,460	9,840	11,170	7,210	8,520	5,550	8,040	5,240	9.4 m	
	5.0 ft lb					*46,690	31,800	*33,460	21,250	24,070	15,550	18,350	11,960	17,730	11,550	30.7 ft	
	0 m kg					*22,800	14,340	15,330	9,520	10,950	7,010	8,410	5,450	8,250	5,350	9.1 m	
	0 ft lb					*49,380	30,880	32,980	20,540	23,600	15,120			18,190	11,800	29.9 ft	
	-1.5 m kg			*15,120	*15,120	*22,560	14,260	15,180	9,390	10,850	6,920			8,900	5,750	8.6 m	
	-5.0 ft lb			*34,220	*34,220	*48,940	30,700	32,650	20,250	23,390	14,940			19,660	12,700	28.3 ft	
	-3.0 m kg	*17,600	*17,600	*23,840	*23,840	*21,140	14,390	15,230	9,430	10,920	6,980			10,300	6,620	7.8 m	
-10 ft lb	*39,440	*39,440	*54,050	*54,050	*45,810	30,990	32,770	20,350	23,570	15,100			22,860	14,690	25.6 ft		
-4.5 m kg			*24,530	*24,530	*18,140	14,740	*13,620	9,690					*11,940	8,580	6.6 m		
-15 ft lb			*52,860	*52,860	*39,030	31,760	*29,010	20,950					*26,340	19,250	21.3 ft		
Boom : 6.45 m (21'2") GP Arm : 3.9 m (12'10") GP Shoe : 800 mm (32") CWT : 6,700 kg (14,770 lb)	9.0 m kg													*6,920	*6,920	7.2 m	
	30 ft lb													*15,400	*15,400	23.3 ft	
	7.5 m kg									*8,120	*8,120			*6,460	*6,460	8.4 m	
	25 ft lb									*18,000	17,630			*14,300	*14,300	27.4 ft	
	6.0 m kg									*8,480	8,080	*7,670	5,900	*6,310	5,630	9.2 m	
	20 ft lb									*18,590	17,380	*14,590	12,640	*13,920	12,530	30.1 ft	
	4.5 m kg							*10,340	*10,340	*9,340	7,800	8,810	5,790	*6,360	5,050	9.7 m	
	15 ft lb								*22,420	*22,420	*20,360	16,810	18,930	12,450	*14,010	11,180	31.9 ft
	3.0 m kg					*16,340	16,000	*12,400	10,410	*10,460	7,450	8,610	5,610	*6,590	4,730	10 m	
	10 ft lb					*35,150	34,540	*26,840	22,460	*22,750	16,070	18,540	12,080	*14,520	10,450	32.7 ft	
	1.5 m kg					*19,950	14,780	*14,380	9,790	11,100	7,110	8,410	5,430	*7,030	4,610	10 m	
	5.0 ft lb					*43,050	31,880	*31,130	21,130	23,900	15,340	18,110	11,690	*15,480	10,180	32.8 ft	
	0 m kg			*9,310	*9,310	*21,940	14,110	15,180	9,350	10,800	6,850	8,250	5,280	7,310	4,680	9.8 m	
	0 ft lb			*21,190	*21,190	*47,490	30,400	32,650	20,170	23,260	14,770	17,780	11,390	16,110	10,330	32.1 ft	
	-1.5 m kg	*9,500	*9,500	*14,210	*14,210	*22,420	13,870	14,920	9,130	10,630	6,690	8,180	5,210	7,780	4,970	9.3 m	
-5.0 ft lb	*21,200	*21,200	*32,100	*32,100	*48,600	29,860	32,080	19,680	22,900	14,440	17,640	11,260	17,190	10,980	30.6 ft		
-3.0 m kg	*14,810	*14,810	*20,540	*20,540	*21,660	13,910	14,880	9,090	10,620	6,680			8,790	5,600	8.6 m		
-10 ft lb	*33,170	*33,170	*46,470	*46,470	*46,930	29,940	32,010	19,610	22,890	14,420			19,480	12,410	28.1 ft		
-4.5 m kg	*21,170	*21,170	*27,400	*27,400	*19,530	14,170	*14,710	9,250					10,890	6,900	7.5 m		
-15 ft lb	*47,640	*47,640	*59,150	*59,150	*42,120	30,530	*31,630	19,990					24,350	15,430	24.3 ft		
-6.0 m kg			*20,710	*20,710	*15,070	14,740							*11,250	10,290	5.8 m		
-20 ft lb			*43,910	*43,910	*31,800	*31,800							*24,770	23,590	18.4 ft		

Notes: 1. Machine in "Fine Mode-F" (Power Boost) for lifting capacities. 2. The above loads are in compliance with SAE J1097 and ISO 10567 Hydraulic Excavator Lifting Capacity Standards. 3. Rated loads do not exceed 87% of hydraulic lifting capacity or 75% of tipping load. 4. Rated loads marked with an asterisk (*) are limited by hydraulic capacity rather than tipping load.

LIFTING CAPACITY EC370F L

Lifting capacity at the arm end without bucket.

For lifting capacity including bucket, simply subtract actual weight of the direct fit bucket or the bucket with quick coupler from the following values.

	Lifting hook related to ground level	1.5 m / 5 ft		3.0 m / 10 ft		4.5 m / 15 ft		6.0 m / 20 ft		7.5 m / 25 ft		9.0 m / 30 ft		Max.		
		Along UC	Across UC	Along UC	Across UC	Along UC	Across UC	Along UC	Across UC	Along UC	Across UC	Along UC	Across UC	Along UC	Across UC	
Boom : 6.45 m (21'2") HD Arm : 3.2 m (10'6") HD Shoe : 800 mm (32") CWT : 6,700 kg (14,770 lb)	7.5 m kg									*9,320	8,020			*8,200	7,710	7.7 m
	25 ft lb													*18,150	17,340	24.9 ft
	6.0 m kg									*9,440	7,940			*7,990	6,360	8.5 m
	20 ft lb									*20,710	17,090			*17,600	14,160	27.8 ft
	4.5 m kg					*14,270	*14,270	*11,540	10,860	*10,190	7,690	8,720	5,700	*8,060	5,630	9.1 m
	15 ft lb					*30,650	*30,650	*25,010	23,430	*22,210	16,580			*17,740	12,470	29.7 ft
	3.0 m kg					*18,310	15,510	*13,480	10,220	*11,200	7,370	8,570	5,570	8,090	5,240	9.3 m
	10 ft lb					*39,340	33,500	*29,160	22,070	*24,340	15,900	18,450	11,980	17,860	11,590	30.6 ft
	1.5 m kg					*21,280	14,480	*15,200	9,670	11,060	7,070	8,410	5,420	7,940	5,110	9.4 m
	5.0 ft lb					*45,940	31,230	*32,910	20,870	23,830	15,250	18,120	11,680	17,500	11,280	30.7 ft
	0 m kg					*22,420	14,040	15,160	9,320	10,820	6,850	8,300	5,320	8,140	5,220	9.1 m
	0 ft lb					*48,560	30,230	32,610	20,100	23,310	14,780			17,940	11,500	29.9 ft
	-1.5 m kg			*15,100	*15,100	*22,170	13,950	14,990	9,170	10,710	6,750			8,780	5,610	8.6 m
	-5.0 ft lb			*34,170	*34,170	*48,100	30,030	32,250	19,780	23,080	14,580			19,400	12,380	28.3 ft
	-3.0 m kg	*17,580	*17,580	*23,830	*23,830	*20,770	14,100	15,050	9,220	10,780	6,820			10,180	6,470	7.8 m
-10 ft lb	*39,400	*39,400	*54,010	*54,010	*45,000	30,350	32,380	19,900	23,280	14,750			22,580	14,350	25.6 ft	
-4.5 m kg			*24,040	*24,040	*17,800	14,470	*13,350	9,500					*11,700	8,410	6.6 m	
-15 ft lb			*51,800	*51,800	*38,270	31,190	*28,440	20,550					*25,810	18,880	21.3 ft	
Boom : 6.45 m (21'2") HD Arm : 3.9 m (12'10") GP Shoe : 800 mm (32") CWT : 6,700 kg (14,770 lb)	9.0 m kg													*6,920	*6,920	7.2 m
	30 ft lb													*15,400	*15,400	23.3 ft
	7.5 m kg									*8,080	*8,080			*6,460	*6,460	8.4 m
	25 ft lb									*17,900	17,650			*14,300	*14,300	27.4 ft
	6.0 m kg									*8,430	8,090	*7,670	5,890	*6,310	5,610	9.2 m
	20 ft lb									*18,480	17,390	*14,590	12,600	*13,920	12,480	30.1 ft
	4.5 m kg							*10,290	*10,290	*9,270	7,800	*8,740	5,770	*6,360	5,020	9.7 m
	15 ft lb							*22,300	*22,300	*20,220	16,790	18,930	12,390	*14,010	11,120	31.9 ft
	3.0 m kg					*16,240	15,990	*12,320	10,390	*10,390	7,430	8,600	5,580	*6,590	4,690	10 m
	10 ft lb					*34,930	34,520	*26,660	22,430	*22,580	16,020	18,510	12,010	*14,520	10,370	32.7 ft
	1.5 m kg					*19,790	14,700	*14,270	9,740	11,080	7,070	8,390	5,390	*7,030	4,570	10 m
	5.0 ft lb					*42,710	31,720	*30,890	21,020	23,870	15,250	18,070	11,600	*15,480	10,080	32.8 ft
	0 m kg			*9,310	*9,310	*21,750	13,990	15,140	9,280	10,770	6,790	8,220	5,230	7,270	4,630	9.8 m
	0 ft lb			*21,190	*21,190	*47,080	30,140	32,560	20,010	23,190	14,640	17,710	11,280	16,040	10,220	32.1 ft
	-1.5 m kg	*9,500	*9,500	*14,210	*14,210	*22,210	13,740	14,860	9,040	10,590	6,630	8,140	5,160	7,750	4,920	9.3 m
-5.0 ft lb	*21,200	*21,200	*32,100	*32,100	*48,150	29,560	31,950	19,480	22,810	14,290	17,560	11,130	17,110	10,860	30.6 ft	
-3.0 m kg	*14,810	*14,810	*20,540	*20,540	*21,450	13,770	14,810	9,000	10,570	6,610			8,750	5,540	8.6 m	
-10 ft lb	*33,170	*33,170	*46,470	*46,470	*46,480	29,630	31,860	19,410	22,780	14,270			19,390	12,280	28.1 ft	
-4.5 m kg	*21,170	*21,170	*27,100	*27,100	*19,320	14,040	*14,560	9,160					10,850	6,840	7.5 m	
-15 ft lb	*47,640	*47,640	*58,500	*58,500	*41,680	30,240	*31,300	19,790					*24,170	15,280	24.3 ft	
-6.0 m kg			*20,440	*20,440	*14,890	14,630							*11,110	10,210	5.8 m	
-20 ft lb			*43,330	*43,330	*31,400	*31,400							*24,450	23,410	18.4 ft	

Notes: 1. Machine in "Fine Mode-F" (Power Boost) for lifting capacities. 2. The above loads are in compliance with SAE J1097 and ISO 10567 Hydraulic Excavator Lifting Capacity Standards. 3. Rated loads do not exceed 87% of hydraulic lifting capacity or 75% of tipping load. 4. Rated loads marked with an asterisk (*) are limited by hydraulic capacity rather than tipping load.

Specifications

LIFTING CAPACITY EC370F L

Lifting capacity at the arm end without bucket.

For lifting capacity including bucket, simply subtract actual weight of the direct fit bucket or the bucket with quick coupler from the following values.

	Lifting hook related to ground level	1.5 m / 5 ft		3.0 m / 10 ft		4.5 m / 15 ft		6.0 m / 20 ft		7.5 m / 25 ft		9.0 m / 30 ft		Max.						
		Along UC	Across UC	Along UC	Across UC	Along UC	Across UC	Along UC	Across UC	Along UC	Across UC	Along UC	Across UC	Along UC	Across UC					
Boom : 6.45 m (21'2")	25 ft lb													*18,190	17,640	24.9 ft				
GP	20 ft lb									*21,020	17,390				*17,650	14,490	27.8 ft			
Arm : 3.2 m (10'6") GP	15 ft lb									*22,570	16,920				*17,790	12,820	29.7 ft			
Shoe : 900 mm (36")	10 ft lb									*39,940	34,160	*29,620	22,540	*24,750	16,290	18,830	12,350	18,240	11,950	30.6 ft
CWT :	5 ft lb									*46,690	32,080	*33,460	21,440	24,300	15,700	18,530	12,070	17,900	11,670	30.7 ft
6,700 kg (14,770 lb)	0 ft lb									*49,380	31,160	33,300	20,730	23,820	15,270			18,370	11,910	29.9 ft
	-5 ft lb																	19,860	12,820	28.3 ft
	-10 ft lb	*39,440	*39,440	*54,050	*54,050	*45,810	31,270	*33,090	20,540	23,800	15,240						23,090	14,830	25.6 ft	
	-15 ft lb			*52,860	*52,860	*39,030	32,040	*29,010	21,140								*26,340	19,420	21.3 ft	
	-20 ft lb																			
Boom : 6.45 m (21'2")	30 ft lb													*15,400	*15,400	23.3 ft				
GP	25 ft lb									*18,000	17,770				*14,300	*14,300	24.7 ft			
Arm : 3.9 m (12'10")	20 ft lb									*18,590	17,520	*14,590	12,760		*13,920	12,640	30.1 ft			
GP	15 ft lb									*22,420	*22,420	*20,360	16,950	19,110	12,560	*14,010	11,290	31.8 ft		
Shoe : 900 mm (36")	10 ft lb									*35,150	34,820	*26,840	22,650	*22,750	16,210	18,720	12,200	*14,520	10,560	32.7 ft
CWT :	5 ft lb									*43,050	32,170	*31,130	21,320	24,130	15,480	18,290	11,810	*15,480	10,280	32.8 ft
6,700 kg (14,770 lb)	0 ft lb																	16,280	10,430	32.1 ft
	-5 ft lb	*21,200	*21,200	*32,100	*32,100	*48,600	30,140	32,400	19,870	23,130	14,580	17,820	11,370				17,370	11,100	30.6 ft	
	-10 ft lb	*33,170	*33,170	*46,470	*46,470	*46,930	30,220	32,320	19,800	23,110	14,570						19,680	12,540	28.1 ft	
	-15 ft lb	*47,640	*47,640	*59,150	*59,150	*42,120	30,810	*31,630	20,180								*24,440	15,580	24.3 ft	
	-20 ft lb			*43,910	*43,910	*31,800	*31,800										*24,770	23,800	18.4 ft	
Boom : 6.45 m (21'2")	25 ft lb													*18,150	17,490	24.9 ft				
HD	20 ft lb									*20,710	17,230				*17,600	14,290	27.8 ft			
Arm : 3.2 m (10'6") HD	15 ft lb									*30,650	*30,650	*25,010	23,630	*22,210	16,720			*17,740	12,590	29.7 ft
Shoe : 900 mm (36")	10 ft lb									*39,340	33,780	*29,160	22,260	*24,340	16,040	18,630	12,100	18,030	11,700	30.6 ft
CWT :	5 ft lb									*45,940	31,510	*32,910	21,060	24,060	15,390	18,300	11,790	17,670	11,390	30.7 ft
6,700 kg (14,770 lb)	0 ft lb									*48,560	30,510	32,920	20,290	23,540	14,920			18,120	11,620	29.9 ft
	-5 ft lb																	19,590	12,510	28.3 ft
	-10 ft lb	*39,400	*39,400	*54,010	*54,010	*45,000	30,630	32,690	20,090	23,510	14,890						22,810	14,490	26.6 ft	
	-15 ft lb			*51,800	*51,800	*38,270	31,470	*28,440	20,740								*25,810	19,060	21.3 ft	
	-20 ft lb																			
Boom : 6.45 m (21'2")	30 ft lb													*15,400	*15,400	23.3 ft				
HD	25 ft lb									*17,900	17,790				*14,300	*14,300	27.4 ft			
Arm : 3.9 m (12'10")	20 ft lb									*18,480	17,540	*14,590	12,720		*13,920	12,600	30.1 ft			
GP	15 ft lb									*22,300	*22,300	*20,220	16,940	19,110	12,510	*14,010	11,220	31.9 ft		
Shoe : 900 mm (36")	10 ft lb									*34,930	34,800	*26,660	22,620	*22,580	16,160	18,690	12,130	*14,520	10,470	32.7 ft
CWT :	5 ft lb									*42,710	32,000	*30,890	21,210	24,100	15,390	18,250	11,720	*15,480	10,180	32.8 ft
6,700 kg (14,770 lb)	0 ft lb																	16,210	10,320	32.1 ft
	-5 ft lb	*21,200	*21,200	*32,100	*32,100	*48,150	29,850	32,270	19,670	23,040	14,440	17,740	11,250				17,290	10,970	30.6 ft	
	-10 ft lb	*33,170	*33,170	*46,470	*46,470	*46,480	29,920	32,180	19,600	23,010	14,410						19,590	12,400	28.1 ft	
	-15 ft lb	*47,640	*47,640	*58,500	*58,500	*41,680	30,520	*31,300	19,980								*24,170	15,430	24.3 ft	
	-20 ft lb			*43,330	*43,330	*31,400	*31,400										*24,450	23,630	18.4 ft	

Notes: 1. Machine in "Fine Mode-F" (Power Boost) for lifting capacities. 2. The above loads are in compliance with SAE J1097 and ISO 10567 Hydraulic Excavator Lifting Capacity Standards. 3. Rated loads do not exceed 87% of hydraulic lifting capacity or 75% of tipping load. 4. Rated loads marked with an asterisk (*) are limited by hydraulic capacity rather than tipping load.



Equipment

STANDARD AND OPTIONAL EQUIPMENT

• = Standard / o = Optional

Engine

Turbocharged, 4 stroke diesel engine with water cooling, direct injection and charged air cooler that meets NA T4f requirements	•
Dual cooling fan system including electric driven for CAC	•
Cyclone pre-cleaner	•
Fuel shut off valve	•
Engine block heater	o
Coolant heater by diesel	o
Reversible fan drive	o
High capacity (tropical) cooling	•
Precleaner, oil bath	o
Air filter, High efficiency (EON)	o
Delayed engine Shutdown	•
Automatic engine shutdown	o
Water separator with heater	•
Arctic regeneration	o
Regeneration control	o
Oil sampling for engine oil	•

Electric / electronic control system

Anti-theft with code lock system	•
Alternator, 180 A	•
Automatic idling system	•
Lock Out / Tag Out function on main battery switch	•
Standard light	•
Basic light package	o
Advanced light package	•
Deluxe light package	o
Arm light	o
LH light	o

Undercarriage and structures

3-point side access	•
Direct filling DEF(AdBlue) / Sight gauge and splash guard	•
Openable combined muffler hood	•
Handrail & Guardrail, fixed/foldable	•
Inner rail	•
Cabin entrance, fixed/foldable	o
Walk way, fixed/foldable	o
SIPS (Side Impact Protection System)	o
HD Side door & hood with screen	o
Without lower structure	o
Link 600/700/800/900 mm triple grouser shoe (24/28/32/36")	o
Link 600 mm triple grouser shoe, HD (24")	o
Link 600 mm double grouser shoe (24")	o
Link 750 mm single grouser shoe (30")	o
Full track guard	o
Track tensioner,sand protect	o
Removable counterweight	o

STANDARD AND OPTIONAL EQUIPMENT

• = Standard / o = Optional

Hydraulic system

EH(Electro-Hydraulic) control system	•
New work mode with 10 steps	•
Auto power boost	•
One touch power boost	•
Priority Adjustment	•
Boom down speed control	•
Shock reduction function	•
Joystick, Semi-long / 4 switch / 4 switch & 1 proportional / Simple L8 / L8	o
Hydraulic oil mineral 32 / 46 / 68	o
Longlife hyd oil mineral 32 / 46 / 68	o
Hydraulic oil bio 46	o
Pattern change	•
Boom float function	•
Straight travel pedal	•
Comfort driving control	o
Creep mode	•
Provision, Magnet application	o
Dust suppression system	o
Dedicated drain line	o
Variable X3 P-Q control	o
Hose rupture valve for boom	o
Hose rupture valve for arm	o

Cab and interior

Keyless engine start and stop	•
8" HD display	•
ROPS certified cab	•
Tiltable left console	•
Digital hour meter	•
Wireless mobile charger with Kinematic sensor package option	•
Various storage space with cool/heated	•
Air pressure supply in cabin	o
1 piece wind shield cab	o
High visibility cab	o
Cabin large mirror, Heated	o
Cabin large mirror	o
Basic / Premium / Deluxe seat	o
Seat belt, 3 inch 2 point / 2 inch 3 point	o
Climate control-HEPA filter	o
Radio with MP3/USB/Bluetooth	o
Front rain shield	o
Sun screen	•
Lower wiper	o
Sun shield, roof hatch	o
Foot rest, High mount	•
FOG (Falling Object Guard)	o
FOPS (Falling Object Protection Structure)	o
Safety net	o

STANDARD AND OPTIONAL EQUIPMENT

• = Standard / o = Optional

Digging equipment

6.45 m (21'2") GP	•
6.45 m (21'2") HD / Non-Boom	o
3.2 m (10'6") GP	•
3.2 m (10'6") HD / 3.9 m (12'10") GP / Non-Arm	o

Machine control technology

Kinematic sensor package	•
Volvo Co-Pilot 2nd display, 12.8" touchable Full HD	•
Dig Assist, Start	•
Dig Assist, 2D	o
Dig Assist, In-Field Design	o
Dig Assist, Topcon 3D-MC	o
Dig Assist, Infield-Design Advanced	o
Dig Assist, On-Board Weighing	o
Dig Assist, Laser Receiver	o
Volvo Active Control	o
Dig Assist, Boundary Limit	•

Safety and security

Travel alarm, beep	•
Travel alarm white noise	o
Flashing beacon, LED	o
Green light beacon	o
Rear view camera	o
Side view camera	o
HD VSV(Volvo Smart View)	•
HD VSV with obstacle detection	o
Provision, HD VSV with obstacle detection	•

Service and maintenance

Fuel level gauge	•
Swing out A/C condenser	•
Fuel filler pump	o
Fast Fuel Fill preparation	o
Quick Hydraulic Oil Fill connection	•
Quick Engine Oil Change	•
Jump start connector	o
Auto lubrication system	o
Tool kit	o

V O L V O