

V O L V O



Volvo Excavators 49.0-52.3 t / 46,220-58,250 lb 173-175 hp

EC230

Volvo Construction Equipment

EC230

For general construction, road building or something more specialist, this is a versatile machine designed to help you achieve outstanding results



An edge in versatility

With its cutting-edge technology, outstanding efficiency and robust design, the EC230 effortlessly handles heavy loads, tackles tough terrain, and ensures exceptional productivity across a wide range of tasks and applications. Whether you're working in general construction, road building or something more specialist, the Volvo EC230 is a versatile and high performing machine designed to help you achieve outstanding results.



Operator comfort

- More precise controls
- Quieter cab
- Personalized settings for greater comfort
- ROPS cab as standard



Smart View with Obstacle Detection

- Increased safety onsite and for the operator
- Radar warns for items outside the screen
- HD screen
- Human identifying alarm separate from other obstacles



Serviceability

- Ground level access for service
- Long service intervals
- Grouped filters and lubrication points
- Quick and easy oil changes



Fuel Efficiency

- Up to 15% improvement
- Engine pump optimization with engine speeds as low as 1,600 rpm
- Smart MCV



Productivity

- Volvo Active Control
- Dig Assist with On-Board Weighing
- Electro-hydraulic system
- Boom/Swing & Boom/Travel priority functions

Volvo EC230 in detail

Engine

The latest generation, Volvo engine Tier 4f emissions compliant diesel engine fully meets the demands of the latest, emissions regulations. Featuring Volvo Advanced Combustion Technology (V-ACT), it is designed to deliver superior performance and fuel efficiency. The engine uses precise, high pressure fuel injectors, turbo charger and air-to-air intercooler, and electronic engine controls to optimize machine performance.

- **Air Filter:** 3-stage with precleaner

- **Automatic Idling System:** Reduces engine speed to idle when the levers and pedals are not activated resulting in less fuel consumption and low cab noise levels.

Engine	Volvo	D6J
Max power at	r/min (r/s)	1,800 (30)
Net, ISO 9249/SAE J1349	kW (hp)	128 (172)
Gross, ISO 14396/SAE J1995	kW (hp)	129 (173)
Power output at		
Operating max	r/min (r/s)	1,600 (27)
Travel max	r/min (r/s)	1,800 (30)
Max torque	Nm (ft lbf)	849 (626)
at engine speed	r/min (r/s)	1,350 (22.5)
No. of cylinders		6
Displacement	l (in ³)	5.7 (348)
Bore	mm (in)	98 (3.86)
Stroke	mm (in)	126 (4.96)

Electrical System

High-capacity electrical system that is well protected. Waterproof double-lock harness plugs are used to secure corrosion-free connections. The main relays and solenoid valves are shielded to prevent damage. Contronics provides advanced monitoring of machine functions and important diagnostic information.

Voltage	V	24
Batteries	V	2 x 12
Battery capacity	Ah	140
Alternator	V/A	28 V / 180 A
Start motor	V - kW	24 / 5.5

Undercarriage

The undercarriage has a robust X-shaped frame. Greased and sealed track chains are standard.

EC230F L

Track shoe		2 x 49
Link pitch	mm (in)	190 (7.5)
Shoe width	mm (in)	600 (24)
Shoe width, triple grouser	mm (in)	500 / 600 / 700 / 800 / 900 (20 / 24 / 28 / 32 / 36)
Shoe width, triple grouser (HD)	mm (in)	600 (24)
Shoe width, double grouser	mm (in)	700 (28)
Bottom rollers		2 x 8
Top rollers		2 x 2

Swing system

The swing system uses an axial piston motors, driving a planetary gearbox for maximum torque. An automatic holding brake and antirebound valve are standard.

Max. slew speed	r/min	11.5
Max. slew torque	kNm (ft lbf)	83.3 (61,430)

Travel System

Each track is powered by an automatic two-speed shift travel motor. The track brakes are multi-disc, spring-applied and hydraulic released. The travel motor, brake and planetary gears are well protected within the track frame.

Max. drawbar pull	kN (lbf)	178 (40,016)
Max. travel speed (low)	km/h (mi/h)	3.4 (2.1)
Max. travel speed (high)	km/h (mi/h)	5.6 (3.5)
Gradeability	°	35

Cab

The operator's cab has easy access via a wide door opening. The cab is supported on hydraulic dampening mounts to reduce shock and vibration levels. These along with sound absorbing lining provide low noise levels. The cab has excellent all-round visibility. The front windshield can easily slide up into the ceiling, and the lower front glass can be removed and stored in the side door.

Integrated air-conditioning and heating system: The pressurized and filtered cab air is supplied by an automatically controlled fan. The air is distributed throughout the cab from 10 vents.

Ergonomic operator's seat: The adjustable seat and joystick console move independently to accommodate the operator. The seat has 12 different adjustments plus a seat belt for the operator's comfort and safety.

Sound Level

Sound level in cab according to ISO 6396		
L _{pA}	dB	70
External sound level according to ISO 6395, EU Noise Directive (2000/14/EC)		
L _{WA}	dB	99

Hydraulic system

The new electro-hydraulic system and new MCV (main control valve) use intelligent technology to control on-demand flow for high productivity, high-digging capacity and excellent fuel consumption.

The following important functions are included in the system:

Summation system: Combines the flow of both hydraulic pumps to ensure quick cycle times and high productivity.

Boom priority: Gives priority to the boom operation for faster raising when loading or performing deep excavations.

Arm priority: Gives priority to the arm operation for faster cycle times in leveling and for increased bucket filling when digging.

Swing priority: Gives priority to swing functions for faster simultaneous operations.

Regeneration system: Prevents cavitation and provides flow to other movements during simultaneous operations for maximum productivity.

Power boost: All digging and lifting forces are increased.

Auto warm up: Hydraulic oil temperature can be set below the threshold that has been set.

Creep mode: Lower travel speed (10%~50% of 1st full speed) can be set by creep switch on.

Holding valves: Boom and arm holding valves prevent the digging equipment from creeping.

Main pump: 2 x Variable displacement axial piston pumps

Maximum flow	l/min (gal/min)	2 x 208 (2 x 55)
--------------	-----------------	------------------

Pilot pump: Gear pump

Maximum flow	l/min (gal/min)	1 x 16 (1 x 4)
--------------	-----------------	----------------

Max. pressure

Implement	MPa (psi)	34.3 / 36.3 (4,975 / 5,265)
Travel circuit	MPa (psi)	34.3 (4,975)
Slew circuit	MPa (psi)	29.5 (4,279)
Pilot circuit	MPa (psi)	3.9 (570)

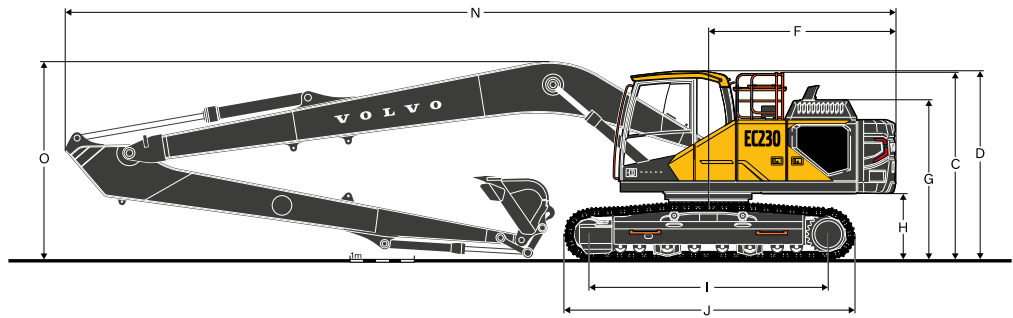
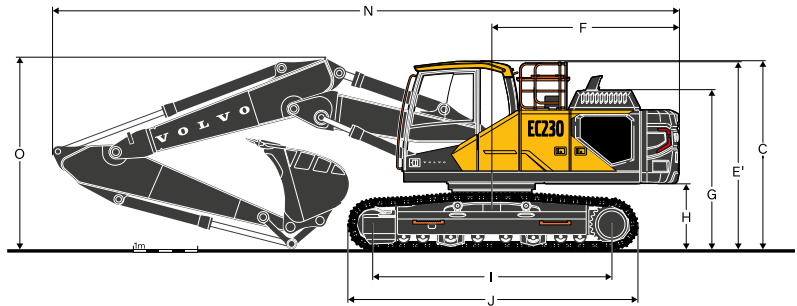
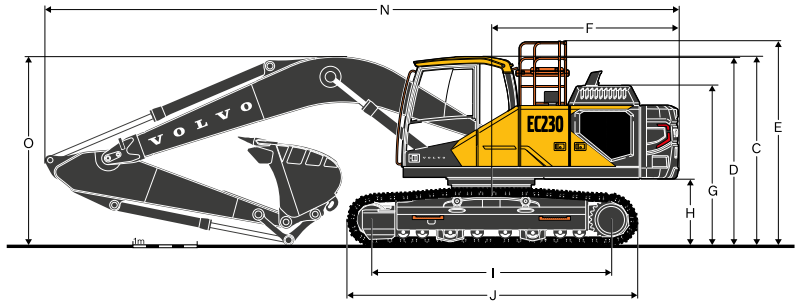
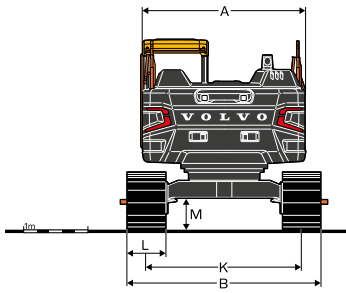
Hydraulic Cylinders

Boom		2
Bore x Stroke	ø x mm (ø x in)	125 x 1,235 (4.9 x 48.6)
2 piece boom		1
Bore x Stroke	ø x mm (ø x in)	160 x 1,070 (6.3 x 42.1)
Arm		1
Bore x Stroke	ø x mm (ø x in)	135 x 1,540 (5.3 x 60.6)
Bucket		1
Bore x Stroke	ø x mm (ø x in)	120 x 1,065 (4.7 x 41.9)
Bucket for LR boom		1
Bore x Stroke	ø x mm (ø x in)	100 x 865 (3.9 x 34.1)

Service Refill

Fuel tank	l (gal)	315 (83)
DEF/AdBlue® tank	l (gal)	27 (7)
Hydraulic system, total	l (gal)	215 (57)
Hydraulic tank	l (gal)	98 (26)
Engine oil	l (gal)	25 (7)
Engine coolant	l (gal)	35 (9)
Slew reduction unit	l (gal)	4 (1)
Travel reduction unit	l (gal)	2 x 3.5 (2 x 1)

Specifications

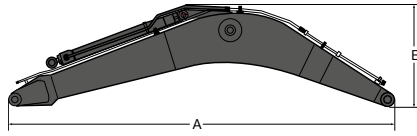


DIMENSIONS

	Unit		EC230F L								EC230F LR	
	m	(ft in)	5.7 (18'8") / 5.57 (18'3")								8.85 (29'0")	
Boom												
Arm	m	ft in	2.0	6'7"	2.5	8'2"	2.9	9'6"	3.5	11'6"	6.25	20'6"
A. Overall width of upper structure	mm	ft in	2,500	8'2"	2,500	8'2"	2,500	8'2"	2,500	8'2"	2,500	8'2"
B. Overall width	mm	ft in	2,990	9'10"	2,990	9'10"	2,990	9'10"	2,990	9'10"	3,190	10'6"
C. Overall height of cab	mm	ft in	2,900	9'6"	2,900	9'6"	2,900	9'6"	2,900	9'6"	2,900	9'6"
D. Overall height of handrail	mm	ft in	2,875	9'5"	2,875	9'5"	2,875	9'5"	2,875	9'5"	2,875	9'5"
E. Overall height of guardrail	mm	ft in	3,120	10'3"	3,120	10'3"	3,120	10'3"	3,120	10'3"	3,120	10'3"
F. Tail swing radius	mm	ft in	2,870	9'5"	2,870	9'5"	2,870	9'5"	2,870	9'5"	2,870	9'5"
G. Overall height of engine hood	mm	ft in	2,450	8'0"	2,450	8'0"	2,450	8'0"	2,450	8'0"	2,450	8'0"
H. Counterweight clearance *	mm	ft in	1,005	3'4"	1,005	3'4"	1,005	3'4"	1,005	3'4"	1,005	3'4"
I. Tumbler length	mm	ft in	3,660	12'0"	3,660	12'0"	3,660	12'0"	3,660	12'0"	3,660	12'0"
J. Track length	mm	ft in	4,460	14'8"	4,460	14'8"	4,460	14'8"	4,460	14'8"	4,460	14'8"
K. Track gauge	mm	ft in	2,390	7'10"	2,390	7'10"	2,390	7'10"	2,390	7'10"	2,390	7'10"
L. Shoe width	mm	ft in	600	2'0"	600	2'0"	600	2'0"	600	2'0"	800	2'7"
M. Min. ground clearance *	mm	ft in	455	1'6"	455	1'6"	455	1'6"	455	1'6"	455	1'6"
N. Overall length	mm	ft in	9,830	32'3"	9,770	32'1"	9,715	31'10"	9,765	32'0"	12,900	42'4"
N ¹ . Overall length	mm	ft in	9,675	31'9"	9,630	31'7"	9,575	31'5"	9,595	31'6"		
O. Overall height of boom	mm	ft in	3,155	10'4"	3,175	10'5"	3,035	9'11"	3,170	10'5"	3,090	10'2"
O ¹ . Overall height of boom	mm	ft in	3,065	10'1"	3,050	10'0"	2,955	9'8"	3,285	10'9"		

* Without shoe grouser

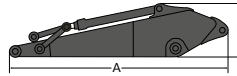
¹ 2-piece boom



DIMENSIONS

Description	Unit		Boom							
	m (ft in)		5.7 (18'8") GP		5.7 (18'8") HD		5.57 (18'3") 2-piece		8.85 (29'0") LR	
A. Length	mm	ft in	5,915	19'5"	5,915	19'5"	5,785	19'0"	9,065	29'9"
B. Height	mm	ft in	1,600	5'3"	1,600	5'3"	1,420	4'8"	1,460	4'9"
Width	mm	ft in	670	2'2"	670	2'2"	670	2'2"	670	2'2"
Weight	kg	lb	2,010	4,430	2,155	4,750	2,640	5,820	2,560	5,640

* Includes cylinder, piping and pin, excludes boom cyl. Pin

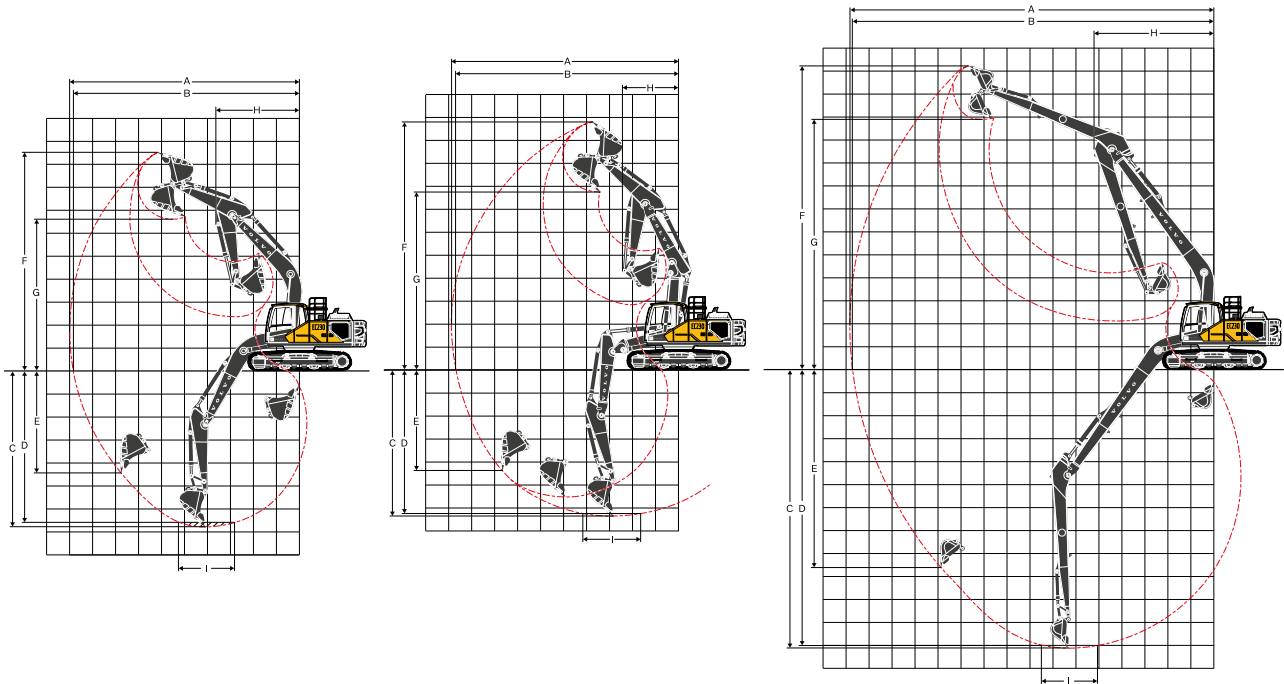


DIMENSIONS

Description	Unit		Arm											
	m (ft in)		2.0 (6'7") ME		2.5 (8'2") HD		2.9 (9'6") GP		2.9 (9'6") HD		3.5 (11'6") GP		6.25 (20'6") LR	
A. Length	mm	ft in	3,070	10'1"	3,530	11'7"	3,895	12'9"	3,895	12'9"	4,540	14'11"	7,310	24'0"
B. Height	mm	ft in	980	3'3"	865	2'10"	865	2'10"	865	2'10"	865	2'10"	945	3'1"
Width	mm	ft in	440	1'5"	440	1'5"	440	1'5"	440	1'5"	440	1'5"	385	1'3"
Weight	kg	lb	1,080	2,380	1,135	2,500	1,140	2,510	1,190	2,620	1,165	2,570	1,255	2,770

* Includes cylinder, linkage and pin

Specifications



WORKING RANGES WITH DIRECT FIT BUCKET

Description	Unit	EC230F L																EC230F LR	
		5.7 (18'8")								5.57 (18'3")								8.85 (29'0")	
Boom	m (ft in)	2.0	6'7"	2.5	8'2"	2.9	9'6"	3.5	11'6"	2.0	6'7"	2.5	8'2"	2.9	9'6"	3.5	11'6"	6.25	20'6"
A. Max. digging reach	mm ft in	9,145 30'0"	9,605 31'6"	9,995 32'10"	10,450 34'3"	9,040 29'8"	9,505 31'2"	9,900 32'6"	10,365 34'0"	15,805 51'10"									
B. Max. digging reach on ground	mm ft in	8,975 29'5"	9,445 31'0"	9,835 32'3"	10,305 33'10"	8,870 29'1"	9,345 30'8"	9,740 31'11"	10,215 33'6"	15,705 51'6"									
C. Max. digging depth	mm ft in	5,925 19'5"	6,425 21'1"	6,825 22'5"	7,425 24'4"	5,505 18'1"	5,995 19'8"	6,400 21'0"	6,945 22'9"	12,140 39'10"									
D. Max. digging depth (l=2.44 m / 8'0" level)	mm ft in	5,670 18'7"	6,205 20'4"	6,635 21'9"	7,235 23'9"	5,385 17'8"	5,885 19'4"	6,295 20'8"	6,845 22'5"	12,035 39'6"									
E. Max. vertical wall digging depth	mm ft in	4,315 14'2"	5,070 16'8"	5,535 18'2"	5,885 19'4"	4,125 13'6"	4,735 15'6"	5,150 16'11"	5,645 18'6"	10,860 35'8"									
F. Max. cutting height	mm ft in	8,925 29'3"	9,205 30'2"	9,445 31'0"	9,450 31'0"	10,015 32'10"	10,395 34'1"	10,715 35'2"	10,930 35'10"	13,260 43'6"									
G. Max. dumping height	mm ft in	6,090 20'0"	6,330 20'9"	6,555 21'6"	6,600 21'8"	7,005 23'0"	7,365 24'2"	7,680 25'2"	7,910 25'11"	10,905 35'9"									
H. Min. front swing radius	mm ft in	3,660 12'0"	3,670 12'0"	3,645 12'0"	3,630 11'11"	2,895 9'6"	2,735 8'12"	2,465 8'1"	2,740 8'12"	5,205 17'1"									

DIGGING FORCES WITH DIRECT FIT BUCKET

Bucket radius		mm	ft in	1,528 5'0"	1,528 5'0"	1,528 5'0"	1,528 5'0"	1,528 5'0"	1,528 5'0"	1,528 5'0"	1,528 5'0"	1,528 5'0"	1,528 5'0"	1,528 5'0"	1,528 5'0"	1,528 5'0"	1,250 4'1"				
Breakout force (bucket)	Normal	SAE J1179	kN	146	32,820	125	28,100	125	28,100	125	28,100	146	32,820	125	28,100	125	28,100	68	15,290		
	Power boost	SAE J1179	kN	154	34,620	132	29,670	132	29,670	132	29,670	154	34,620	132	29,670	132	29,670	-	-		
	Normal	ISO 6015	kN	165	37,090	141	31,700	141	31,700	141	31,700	165	37,090	141	31,700	141	31,700	77	17,310		
	Power boost	ISO 6015	kN	174	39,120	149	33,500	149	33,500	149	33,500	174	39,120	149	33,500	149	33,500	-	-		
Tearout force (arm)	Normal	SAE J1179	kN	144	32,370	117	26,300	101	22,710	92	20,680	144	32,370	117	26,300	101	22,710	92	20,680	44	9,890
	Power boost	SAE J1179	kN	153	34,400	124	27,880	107	24,050	97	21,810	153	34,400	124	27,880	107	24,050	97	21,810	-	-
	Normal	ISO 6015	kN	149	33,500	121	27,200	104	23,380	94	21,130	149	33,500	121	27,200	104	23,380	94	21,130	45	10,120
	Power boost	ISO 6015	kN	158	35,520	128	28,780	110	24,730	99	22,260	158	35,520	128	28,780	110	24,730	99	22,260	-	-
Rotation angle, bucket	°			166	175	175	175	166	175	175	175	166	175	175	175	175	175	175	178		

GROUND PRESSURE

Description	Shoe width		Operating weight		Ground pressure		Overall width		Operating weight		Ground pressure		Overall width							
	mm	in	kg	lb	kPa	psi	mm	ft in	kg	lb	kPa	psi	mm	ft in						
Triple grouser	500	20	23,090	50,910	57.9	8.4	2,890	9'6"	23,090	50,910	57.9	8.4	2,890	9'6"						
	600	24	23,350	51,490	48.0	7.0	2,990	9'10"	23,350	51,490	48.0	7.0	2,990	9'10"						
	600 (HD)	24 (HD)	23,480	51,770	49.0	7.1	2,990	9'10"	23,480	51,770	49.0	7.1	2,990	9'10"						
	700	28	23,760	52,390	42.2	6.1	3,090	10'2"	23,770	52,410	42.2	6.1	3,090	10'2"						
	800	32	24,050	53,030	37.3	5.4	3,190	10'6"	24,050	53,030	37.3	5.4	3,190	10'6"						
	900	36	24,330	53,650	33.3	4.8	3,290	10'10"	24,330	53,650	33.3	4.8	3,290	10'10"						
Single grouser	600	24	23,550	51,930	49.0	7.1	2,990	9'10"	23,560	51,950	49.0	7.1	2,990	9'10"						
Double grouser	700	28	24,070	53,070	43.1	6.3	3,090	10'2"	24,070	53,070	43.1	6.3	3,090	10'2"						
									EC230F L, 5.7 m / 18'8" GP boom, 2.5 m / 8'2" HD arm, 1,036 kg / 2,280 lb bucket, 4,600 kg / 10,140 lb counterweight						EC230F L, 5.7 m / 18'8" GP boom, 2.9 m / 9'6" GP arm, 1,036 kg / 2,280 lb bucket, 4,600 kg / 10,140 lb counterweight					
Description	Shoe width		Operating weight		Ground pressure		Overall width		Operating weight		Ground pressure		Overall width							
	mm	in	kg	lb	kPa	psi	mm	ft in	kg	lb	kPa	psi	mm	ft in						
Triple grouser	500	20	23,140	51,020	57.9	8.4	2,890	9'6"	23,220	51,200	57.9	8.4	2,890	9'6"						
	600	24	23,400	51,600	48.0	7.0	2,990	9'10"	23,480	51,770	49.0	7.1	2,990	9'10"						
	600 (HD)	24 (HD)	23,530	51,880	49.0	7.1	2,990	9'10"	23,610	52,060	49.0	7.1	2,990	9'10"						
	700	28	23,820	52,520	42.2	6.1	3,090	10'2"	23,890	52,680	42.2	6.1	3,090	10'2"						
	800	32	24,100	53,140	37.3	5.4	3,190	10'6"	24,180	53,320	37.3	5.4	3,190	10'6"						
	900	36	24,380	53,760	33.3	4.8	3,290	10'10"	24,460	53,930	33.3	4.8	3,290	10'10"						
Single grouser	600	24	23,610	52,060	49.0	7.1	2,990	9'10"	23,680	52,210	49.0	7.1	2,990	9'10"						
Double grouser	700	28	24,120	53,180	43.1	6.3	3,090	10'2"	24,200	53,360	43.1	6.3	3,090	10'2"						
									EC230F L, 5.7 m / 18'8" GP boom, 2.9 m / 9'6" HD arm, 1,036 kg / 2,280 lb bucket, 4,600 kg / 10,140 lb counterweight						EC230F L, 5.7 m / 18'8" GP boom, 3.5 m / 11'6" GP arm, 1,036 kg / 2,280 lb bucket, 4,600 kg / 10,140 lb counterweight					
Description	Shoe width		Operating weight		Ground pressure		Overall width		Operating weight		Ground pressure		Overall width							
	mm	in	kg	lb	kPa	psi	mm	ft in	kg	lb	kPa	psi	mm	ft in						
Triple grouser	500	20	23,210	51,180	57.9	8.4	2,890	9'6"	23,210	51,180	57.9	8.4	2,890	9'6"						
	600	24	23,470	51,750	49.0	7.1	2,990	9'10"	23,470	51,750	49.0	7.1	2,990	9'10"						
	600 (HD)	24 (HD)	23,600	52,040	49.0	7.1	2,990	9'10"	23,600	52,040	49.0	7.1	2,990	9'10"						
	700	28	23,890	52,680	42.2	6.1	3,090	10'2"	23,880	52,660	42.2	6.1	3,090	10'2"						
	800	32	24,170	53,290	37.3	5.4	3,190	10'6"	24,160	53,270	37.3	5.4	3,190	10'6"						
	900	36	24,450	53,910	33.3	4.8	3,290	10'10"	24,450	53,910	33.3	4.8	3,290	10'10"						
Single grouser	600	24	23,680	52,210	49.0	7.1	2,990	9'10"	23,670	52,190	49.0	7.1	2,990	9'10"						
Double grouser	700	28	24,190	53,340	43.1	6.3	3,090	10'2"	24,190	53,340	43.1	6.3	3,090	10'2"						
									EC230F L, 5.7 m / 18'8" HD boom, 2.0 m / 6'7" ME arm, 1,036 kg / 2,280 lb bucket, 4,600 kg / 10,140 lb counterweight						EC230F L, 5.7 m / 18'8" HD boom, 2.5 m / 8'2" HD arm, 1,036 kg / 2,280 lb bucket, 4,600 kg / 10,140 lb counterweight					
Description	Shoe width		Operating weight		Ground pressure		Overall width		Operating weight		Ground pressure		Overall width							
	mm	in	kg	lb	kPa	psi	mm	ft in	kg	lb	kPa	psi	mm	ft in						
Triple grouser	500	20	23,210	51,180	57.9	8.4	2,890	9'6"	23,260	51,290	57.9	8.4	2,890	9'6"						
	600	24	23,470	51,750	49.0	7.1	2,990	9'10"	23,520	51,860	49.0	7.1	2,990	9'10"						
	600 (HD)	24 (HD)	23,600	52,040	49.0	7.1	2,990	9'10"	23,650	52,150	49.0	7.1	2,990	9'10"						
	700	28	23,890	52,680	42.2	6.1	3,090	10'2"	23,940	52,790	42.2	6.1	3,090	10'2"						
	800	32	24,170	53,290	37.3	5.4	3,190	10'6"	24,220	53,410	37.3	5.4	3,190	10'6"						
	900	36	24,450	53,910	33.3	4.8	3,290	10'10"	24,500	54,020	33.3	4.8	3,290	10'10"						
Single grouser	600	24	23,680	52,210	49.0	7.1	2,990	9'10"	23,730	52,320	49.0	7.1	2,990	9'10"						
Double grouser	700	28	24,190	53,340	43.1	6.3	3,090	10'2"	24,240	53,450	43.1	6.3	3,090	10'2"						
									EC230F L, 5.7 m / 18'8" HD boom, 2.9 m / 9'6" GP arm, 1,036 kg / 2,280 lb bucket, 4,600 kg / 10,140 lb counterweight						EC230F L, 5.7 m / 18'8" HD boom, 2.9 m / 9'6" HD arm, 1,036 kg / 2,280 lb bucket, 4,600 kg / 10,140 lb counterweight					

Specifications

GROUND PRESSURE														
Description	Shoe width		Operating weight		Ground pressure		Overall width		Operating weight		Ground pressure		Overall width	
	mm	in	kg	lb	kPa	psi	mm	ft in	kg	lb	kPa	psi	mm	ft in
Triple grouser	500	20	23,340	51,460	57.9	8.4	2,890	9'6"	23,720	52,300	58.8	8.5	2,890	9'6"
	600	24	23,600	52,040	49.0	7.1	2,990	9'10"	23,980	52,880	50.0	7.3	2,990	9'10"
	600 (HD)	24 (HD)	23,730	52,320	49.0	7.1	2,990	9'10"	24,120	53,180	50.0	7.3	2,990	9'10"
	700	28	24,010	52,940	43.1	6.3	3,090	10'2"	24,400	53,800	43.1	6.3	3,090	10'2"
	800	32	24,290	53,560	38.2	5.5	3,190	10'6"	24,680	54,420	38.2	5.5	3,190	10'6"
	900	36	24,580	54,200	33.3	4.8	3,290	10'10"	24,960	55,040	34.3	5.0	3,290	10'10"
Single grouser	600	24	23,800	52,480	49.0	7.1	2,990	9'10"	24,190	53,340	50.0	7.3	2,990	9'10"
Double grouser	700	28	24,320	53,630	43.1	6.3	3,090	10'2"	24,710	54,490	44.1	6.4	3,090	10'2"
		EC230F L, 5.7 m / 18'8" HD boom, 3.5 m / 11'6" GP arm, 1,036 kg / 2,280 lb bucket, 4,600 kg / 10,140 lb counterweight						EC230F L, 5.57 m / 18'3" 2-pieces boom, 2.9 m / 9'6" GP arm, 1,036 kg / 2,280 lb bucket, 4,600 kg / 10,140 lb counterweight						
Description	Shoe width		Operating weight		Ground pressure		Overall width		Operating weight		Ground pressure		Overall width	
	mm	in	kg	lb	kPa	psi	mm	ft in	kg	lb	kPa	psi	mm	ft in
Triple grouser	500	20	23,770	52,410	58.8	8.5	2,890	9'6"	23,850	52,590	59.8	8.7	2,890	9'6"
	600	24	24,030	52,990	50.0	7.3	2,990	9'10"	24,110	53,160	50.0	7.3	2,990	9'10"
	600 (HD)	24 (HD)	24,170	53,290	50.0	7.3	2,990	9'10"	24,240	53,450	50.0	7.3	2,990	9'10"
	700	28	24,450	53,910	43.1	6.3	3,090	10'2"	24,530	54,090	43.1	6.3	3,090	10'2"
	800	32	24,730	54,530	38.2	5.5	3,190	10'6"	24,810	54,710	38.2	5.5	3,190	10'6"
	900	36	25,010	55,150	34.3	5.0	3,290	10'10"	25,090	55,320	34.3	5.0	3,290	10'10"
Single grouser	600	24	24,240	53,450	50.0	7.3	2,990	9'10"	24,320	53,630	50.0	7.3	2,990	9'10"
Double grouser	700	28	24,760	54,600	44.1	6.4	3,090	10'2"	24,830	54,750	44.1	6.4	3,090	10'2"
		EC230F L, 5.57 m / 18'3" 2-pieces boom, 2.9 m / 9'6" HD arm, 1,036 kg / 2,280 lb bucket, 4,600 kg / 10,140 lb counterweight						EC230F L, 5.57 m / 18'3" 2-pieces boom, 3.5 m / 11'6" GP arm, 1,036 kg / 2,280 lb bucket, 4,600 kg / 10,140 lb counterweight						
Description	Shoe width		Operating weight		Ground pressure		Overall width		Operating weight		Ground pressure		Overall width	
	mm	in	kg	lb	kPa	psi	mm	ft in	kg	lb	kPa	psi	mm	ft in
Triple grouser	500	20	23,960	52,830	59.8	8.7	2,890	9'6"	23,970	52,850	59.8	8.7	2,890	9'6"
	600	24	24,220	53,410	50.0	7.3	2,990	9'10"	24,220	53,410	50.0	7.3	2,990	9'10"
	600 (HD)	24 (HD)	24,390	53,780	51.0	7.4	2,990	9'10"	24,390	53,780	51.0	7.4	2,990	9'10"
	700	28	24,560	54,150	44.1	6.4	3,090	10'2"	24,570	54,180	44.1	6.4	3,090	10'2"
	800	32	24,960	55,040	39.2	5.7	3,190	10'6"	24,970	55,060	39.2	5.7	3,190	10'6"
	900	36	25,250	55,680	35.3	5.1	3,290	10'10"	25,250	55,680	35.3	5.1	3,290	10'10"
Single grouser	600	24	24,350	53,690	50.0	7.3	2,990	9'10"	24,360	53,710	51.0	7.4	2,990	9'10"
Double grouser	700	28	24,940	54,990	44.1	6.4	3,090	10'2"	24,940	54,990	44.1	6.4	3,090	10'2"
		EC230F L, 5.7 m / 18'8" GP boom, 2.5 m / 8'2" HD arm, 1,036 kg / 2,280 lb bucket, 5,400 kg / 11,910 lb counterweight						EC230F L, 5.7 m / 18'8" GP boom, 2.9 m / 9'6" GP arm, 1,036 kg / 2,280 lb bucket, 5,400 kg / 11,910 lb counterweight						
Description	Shoe width		Operating weight		Ground pressure		Overall width		Operating weight		Ground pressure		Overall width	
	mm	in	kg	lb	kPa	psi	mm	ft in	kg	lb	kPa	psi	mm	ft in
Triple grouser	500	20	24,020	52,960	59.8	8.7	2,890	9'6"	24,090	53,120	59.8	8.7	2,890	9'6"
	600	24	24,280	53,540	50.0	7.3	2,990	9'10"	24,350	53,690	50.0	7.3	2,990	9'10"
	600 (HD)	24 (HD)	24,440	53,890	51.0	7.4	2,990	9'10"	24,520	54,070	51.0	7.4	2,990	9'10"
	700	28	24,620	54,290	44.1	6.4	3,090	10'2"	24,690	54,440	44.1	6.4	3,090	10'2"
	800	32	25,020	55,170	39.2	5.7	3,190	10'6"	25,090	55,320	39.2	5.7	3,190	10'6"
	900	36	25,300	55,790	35.3	5.1	3,290	10'10"	25,380	55,960	35.3	5.1	3,290	10'10"
Single grouser	600	24	24,410	53,820	51.0	7.4	2,990	9'10"	24,480	53,980	51.0	7.4	2,990	9'10"
Double grouser	700	28	24,990	55,100	44.1	6.4	3,090	10'2"	25,070	55,280	44.1	6.4	3,090	10'2"
		EC230F L, 5.7 m / 18'8" GP boom, 2.9 m / 9'6" HD arm, 1,036 kg / 2,280 lb bucket, 5,400 kg / 11,910 lb counterweight						EC230F L, 5.7 m / 18'8" GP boom, 3.5 m / 11'6" GP arm, 1,036 kg / 2,280 lb bucket, 5,400 kg / 11,910 lb counterweight						

GROUND PRESSURE														
Description	Shoe width		Operating weight		Ground pressure		Overall width		Operating weight		Ground pressure		Overall width	
	mm	in	kg	lb	kPa	psi	mm	ft in	kg	lb	kPa	psi	mm	ft in
Triple grouser	500	20	24,080	53,100	59.8	8.7	2,890	9'6"	24,080	53,100	59.8	8.7	2,890	9'6"
	600	24	24,340	53,670	50.0	7.3	2,990	9'10"	24,340	53,670	50.0	7.3	2,990	9'10"
	600 (HD)	24 (HD)	24,510	54,040	51.0	7.4	2,990	9'10"	24,510	54,040	51.0	7.4	2,990	9'10"
	700	28	24,690	54,440	44.1	6.4	3,090	10'2"	24,680	54,420	44.1	6.4	3,090	10'2"
	800	32	25,080	55,300	39.2	5.7	3,190	10'6"	25,080	55,300	39.2	5.7	3,190	10'6"
	900	36	25,370	55,940	35.3	5.1	3,290	10'10"	25,370	55,940	35.3	5.1	3,290	10'10"
Single grouser	600	24	24,480	53,980	51.0	7.4	2,990	9'10"	24,470	53,960	51.0	7.4	2,990	9'10"
Double grouser	700	28	25,060	55,260	44.1	6.4	3,090	10'2"	25,060	55,260	44.1	6.4	3,090	10'2"
EC230F L, 5.7 m / 18'8" HD boom, 2.0 m / 6'7" ME arm, 1,036 kg / 2,280 lb bucket, 5,400 kg / 11,910 lb counterweight														
EC230F L, 5.7 m / 18'8" HD boom, 2.5 m / 8'2" HD arm, 1,036 kg / 2,280 lb bucket, 5,400 kg / 11,910 lb counterweight														
Description	Shoe width		Operating weight		Ground pressure		Overall width		Operating weight		Ground pressure		Overall width	
	mm	in	kg	lb	kPa	psi	mm	ft in	kg	lb	kPa	psi	mm	ft in
Triple grouser	500	20	24,090	53,120	59.8	8.7	2,890	9'6"	24,140	53,230	59.8	8.7	2,890	9'6"
	600	24	24,340	53,670	50.0	7.3	2,990	9'10"	24,390	53,780	51.0	7.4	2,990	9'10"
	600 (HD)	24 (HD)	24,510	54,040	51.0	7.4	2,990	9'10"	24,560	54,150	51.0	7.4	2,990	9'10"
	700	28	24,690	54,440	44.1	6.4	3,090	10'2"	24,740	54,550	44.1	6.4	3,090	10'2"
	800	32	25,090	55,320	39.2	5.7	3,190	10'6"	25,140	55,430	39.2	5.7	3,190	10'6"
	900	36	25,370	55,940	35.3	5.1	3,290	10'10"	25,420	56,050	35.3	5.1	3,290	10'10"
Single grouser	600	24	24,480	53,980	51.0	7.4	2,990	9'10"	24,530	54,090	51.0	7.4	2,990	9'10"
Double grouser	700	28	25,060	55,260	44.1	6.4	3,090	10'2"	25,110	55,370	45.1	6.5	3,090	10'2"
EC230F L, 5.7 m / 18'8" HD boom, 2.9 m / 9'6" GP arm, 1,036 kg / 2,280 lb bucket, 5,400 kg / 11,910 lb counterweight														
EC230F L, 5.7 m / 18'8" HD boom, 2.9 m / 9'6" HD arm, 1,036 kg / 2,280 lb bucket, 5,400 kg / 11,910 lb counterweight														
Description	Shoe width		Operating weight		Ground pressure		Overall width		Operating weight		Ground pressure		Overall width	
	mm	in	kg	lb	kPa	psi	mm	ft in	kg	lb	kPa	psi	mm	ft in
Triple grouser	500	20	24,210	53,380	59.8	8.7	2,890	9'6"	24,600	54,240	60.8	8.8	2,890	9'6"
	600	24	24,470	53,960	51.0	7.4	2,990	9'10"	24,860	54,820	52.0	7.5	2,990	9'10"
	600 (HD)	24 (HD)	24,640	54,330	51.0	7.4	2,990	9'10"	25,030	55,190	52.0	7.5	2,990	9'10"
	700	28	24,810	54,710	44.1	6.4	3,090	10'2"	25,200	55,570	45.1	6.5	3,090	10'2"
	800	32	25,210	55,590	39.2	5.7	3,190	10'6"	25,600	56,450	40.2	5.8	3,190	10'6"
	900	36	25,500	56,230	35.3	5.1	3,290	10'10"	25,880	57,070	35.3	5.1	3,290	10'10"
Single grouser	600	24	24,600	54,240	51.0	7.4	2,990	9'10"	24,990	55,100	52.0	7.5	2,990	9'10"
Double grouser	700	28	25,190	55,540	45.1	6.5	3,090	10'2"	25,580	56,400	45.1	6.5	3,090	10'2"
EC230F L, 5.7 m / 18'8" HD boom, 3.5 m / 11'6" GP arm, 1,036 kg / 2,280 lb bucket, 5,400 kg / 11,910 lb counterweight														
EC230F L, 5.57 m / 18'3" 2-pieces boom, 2.9 m / 9'6" GP arm, 1,036 kg / 2,280 lb bucket, 5,400 kg / 11,910 lb counterweight														
Description	Shoe width		Operating weight		Ground pressure		Overall width		Operating weight		Ground pressure		Overall width	
	mm	in	kg	lb	kPa	psi	mm	ft in	kg	lb	kPa	psi	mm	ft in
Triple grouser	500	20	24,650	54,350	61.8	9.0	2,890	9'6"	24,720	54,510	61.8	9.0	2,890	9'6"
	600	24	24,910	54,930	52.0	7.5	2,990	9'10"	24,980	55,080	52.0	7.5	2,990	9'10"
	600 (HD)	24 (HD)	25,080	55,300	52.0	7.5	2,990	9'10"	25,150	55,460	52.0	7.5	2,990	9'10"
	700	28	25,250	55,680	45.1	6.5	3,090	10'2"	25,330	55,850	45.1	6.5	3,090	10'2"
	800	32	25,650	56,560	40.2	5.8	3,190	10'6"	25,720	56,710	40.2	5.8	3,190	10'6"
	900	36	25,930	57,180	36.3	5.3	3,290	10'10"	26,010	57,350	36.3	5.3	3,290	10'10"
Single grouser	600	24	25,040	55,210	52.0	7.5	2,990	9'10"	25,120	55,390	52.0	7.5	2,990	9'10"
Double grouser	700	28	25,630	56,510	45.1	6.5	3,090	10'2"	25,670	56,670	46.1	6.7	3,090	10'2"
EC230F LR, 8.85 m / 29'0" LR, 6.25 m / 20'6" LR arm, 452 kg / 1,000 lb bucket, 5,400 kg / 11,910 lb counterweight														
Description	Shoe width		Operating weight		Ground pressure		Overall width		Operating weight		Ground pressure		Overall width	
	mm	in	kg	lb	kPa	psi	mm	ft in	kg	lb	kPa	psi	mm	ft in
Triple grouser	800	32	24,950	55,010	39.2	5.7	3,190	10'6"						
	900	36	25,230	55,630	35.3	5.1	3,290	10'10"						

Specifications

BUCKET SELECTION GUIDE

EC230F L with 600 mm (24") shoe, 4,600 kg (10,140 lb) counterweight

Bucket Type		Capacity		Cutting width		Weight		Teeth		Recommended maximum material density (kg/m ³ / lb/yd ³)						
										5.7 m (18'8") GP Boom						
		L	yd ³	mm	ft in	kg	lb	EA	H2.5 m (8'2") Arm	G2.9 m (9'6") Arm	H2.9 m (9'6") Arm	G3.5 m (11'6") Arm				
Direct fit Buckets	GP	480	0.63	600	2'0"	666	1,468	3	1,800	3,034	1,800	3,034	1,800	3,034	1,800	3,034
		590	0.77	750	2'6"	711	1,567	3	1,800	3,034	1,800	3,034	1,800	3,034	1,800	3,034
		630	0.82	800	2'7"	703	1,550	4	1,800	3,034	1,800	3,034	1,800	3,034	1,800	3,034
		750	0.98	900	2'11"	749	1,651	4	1,800	3,034	1,800	3,034	1,800	3,034	1,800	3,034
		750	0.98	900	2'11"	792	1,746	4	1,800	3,034	1,800	3,034	1,800	3,034	1,800	3,034
		920	1.2	1,050	3'5"	862	1,900	4	1,800	3,034	1,800	3,034	1,800	3,034	1,800	3,034
		920	1.2	1,050	3'5"	819	1,806	4	1,800	3,034	1,800	3,034	1,800	3,034	1,800	3,034
		1,090	1.43	1,200	3'11"	908	2,002	5	1,800	3,034	1,800	3,034	1,800	3,034	1,800	3,034
		1,090	1.43	1,200	3'11"	951	2,097	5	1,800	3,034	1,800	3,034	1,800	3,034	1,800	3,034
		1,270	1.66	1,350	4'5"	1,038	2,288	5	1,800	3,034	1,800	3,034	1,800	3,034	1,700	2,865
		1,270	1.66	1,350	4'5"	995	2,194	5	1,800	3,034	1,800	3,034	1,800	3,034	1,800	3,034
		1,440	1.88	1,500	4'11"	1,085	2,392	6	1,800	3,034	1,700	2,865	1,700	2,865	1,500	2,528
	1,320	1.73	1,420	4'8"	999	2,202	5	1,800	3,034	1,800	3,034	1,800	3,034	1,700	2,865	
	1,320	1.73	1,420	4'8"	1,041	2,295	5	1,800	3,034	1,800	3,034	1,800	3,034	1,700	2,865	
	HD	480	0.63	600	2'0"	738	1,627	3	2,100	3,540	2,100	3,540	2,100	3,540	2,100	3,540
		480	0.63	600	2'0"	675	1,488	3	2,100	3,540	2,100	3,540	2,100	3,540	2,100	3,540
		750	0.98	900	2'11"	872	1,922	4	2,100	3,540	2,100	3,540	2,100	3,540	2,100	3,540
		750	0.98	900	2'11"	808	1,781	4	2,100	3,540	2,100	3,540	2,100	3,540	2,100	3,540
		920	1.2	1,050	3'5"	951	2,097	4	2,100	3,540	2,100	3,540	2,100	3,540	2,100	3,540
		920	1.2	1,050	3'5"	888	1,958	4	2,100	3,540	2,100	3,540	2,100	3,540	2,100	3,540
1,090		1.43	1,200	3'11"	1,046	2,306	5	2,100	3,540	2,100	3,540	2,100	3,540	2,000	3,371	
1,090		1.43	1,200	3'11"	983	2,167	5	2,100	3,540	2,100	3,540	2,100	3,540	2,100	3,540	
1,270	1.66	1,380	4'6"	1,045	2,304	5	2,100	3,540	2,000	3,371	2,000	3,371	1,700	2,865		
1,270	1.66	1,380	4'6"	1,108	2,443	5	2,100	3,540	1,900	3,203	1,900	3,203	1,700	2,865		
Bucket Type		Capacity		Cutting width		Weight		Teeth		Recommended maximum material density (kg/m ³ / lb/yd ³)						
										5.7 m (18'8") HD Boom						
		L	yd ³	mm	ft in	kg	lb	EA	H2.5 m (8'2") Arm	G2.9 m (9'6") Arm	H2.9 m (9'6") Arm	G3.5 m (11'6") Arm				
Direct fit Buckets	GP	480	0.63	600	2'0"	666	1,468	3	1,800	3,034	1,800	3,034	1,800	3,034	1,800	3,034
		590	0.77	750	2'6"	711	1,567	3	1,800	3,034	1,800	3,034	1,800	3,034	1,800	3,034
		630	0.82	800	2'7"	703	1,550	4	1,800	3,034	1,800	3,034	1,800	3,034	1,800	3,034
		750	0.98	900	2'11"	749	1,651	4	1,800	3,034	1,800	3,034	1,800	3,034	1,800	3,034
		750	0.98	900	2'11"	792	1,746	4	1,800	3,034	1,800	3,034	1,800	3,034	1,800	3,034
		920	1.2	1,050	3'5"	862	1,900	4	1,800	3,034	1,800	3,034	1,800	3,034	1,800	3,034
		920	1.2	1,050	3'5"	819	1,806	4	1,800	3,034	1,800	3,034	1,800	3,034	1,800	3,034
		1,090	1.43	1,200	3'11"	908	2,002	5	1,800	3,034	1,800	3,034	1,800	3,034	1,800	3,034
		1,090	1.43	1,200	3'11"	951	2,097	5	1,800	3,034	1,800	3,034	1,800	3,034	1,800	3,034
		1,270	1.66	1,350	4'5"	1,038	2,288	5	1,800	3,034	1,800	3,034	1,800	3,034	1,700	2,865
		1,270	1.66	1,350	4'5"	995	2,194	5	1,800	3,034	1,800	3,034	1,800	3,034	1,800	3,034
		1,440	1.88	1,500	4'11"	1,085	2,392	6	1,800	3,034	1,700	2,865	1,700	2,865	1,500	2,528
	1,320	1.73	1,420	4'8"	999	2,202	5	1,800	3,034	1,800	3,034	1,800	3,034	1,700	2,865	
	1,320	1.73	1,420	4'8"	1,041	2,295	5	1,800	3,034	1,800	3,034	1,800	3,034	1,600	2,697	
	HD	480	0.63	600	2'0"	738	1,627	3	2,100	3,540	2,100	3,540	2,100	3,540	2,100	3,540
		480	0.63	600	2'0"	675	1,488	3	2,100	3,540	2,100	3,540	2,100	3,540	2,100	3,540
		750	0.98	900	2'11"	872	1,922	4	2,100	3,540	2,100	3,540	2,100	3,540	2,100	3,540
		750	0.98	900	2'11"	808	1,781	4	2,100	3,540	2,100	3,540	2,100	3,540	2,100	3,540
		920	1.2	1,050	3'5"	951	2,097	4	2,100	3,540	2,100	3,540	2,100	3,540	2,100	3,540
		920	1.2	1,050	3'5"	888	1,958	4	2,100	3,540	2,100	3,540	2,100	3,540	2,100	3,540
1,090		1.43	1,200	3'11"	1,046	2,306	5	2,100	3,540	2,100	3,540	2,100	3,540	2,000	3,371	
1,090		1.43	1,200	3'11"	983	2,167	5	2,100	3,540	2,100	3,540	2,100	3,540	2,100	3,540	
1,270	1.66	1,380	4'6"	1,045	2,304	5	2,100	3,540	2,000	3,371	1,900	3,203	1,700	2,865		
1,270	1.66	1,380	4'6"	1,108	2,443	5	2,100	3,540	1,900	3,203	1,900	3,203	1,700	2,865		

BUCKET SELECTION GUIDE

EC230F L with 600 mm (24") shoe, 4,600 kg (10,140 lb) counterweight

Bucket Type		Capacity		Cutting width		Weight		Teeth	Recommended maximum material density (kg/m ³ / lb/yd ³)							
		L	yd ³	mm	ft in	kg	lb	EA	5.57 m (18'3") VA Boom							
									H2.5 m (8'2") Arm		G2.9 m (9'6") Arm		H2.9 m (9'6") Arm		G3.5 m (11'6") Arm	
Direct fit Buckets	GP	480	0.63	600	2'0"	666	1,468	3	1,800	3,034	1,800	3,034	1,800	3,034	1,800	3,034
		590	0.77	750	2'6"	711	1,567	3	1,800	3,034	1,800	3,034	1,800	3,034	1,800	3,034
		630	0.82	800	2'7"	703	1,550	4	1,800	3,034	1,800	3,034	1,800	3,034	1,800	3,034
		750	0.98	900	2'11"	749	1,651	4	1,800	3,034	1,800	3,034	1,800	3,034	1,800	3,034
		750	0.98	900	2'11"	792	1,746	4	1,800	3,034	1,800	3,034	1,800	3,034	1,800	3,034
		920	1.2	1,050	3'5"	862	1,900	4	1,800	3,034	1,800	3,034	1,800	3,034	1,800	3,034
		920	1.2	1,050	3'5"	819	1,806	4	1,800	3,034	1,800	3,034	1,800	3,034	1,800	3,034
		1,090	1.43	1,200	3'11"	908	2,002	5	1,800	3,034	1,800	3,034	1,800	3,034	1,800	3,034
		1,090	1.43	1,200	3'11"	951	2,097	5	1,800	3,034	1,800	3,034	1,800	3,034	1,800	3,034
		1,270	1.66	1,350	4'5"	1,038	2,288	5	1,800	3,034	1,800	3,034	1,800	3,034	1,700	2,865
		1,270	1.66	1,350	4'5"	995	2,194	5	1,800	3,034	1,800	3,034	1,800	3,034	1,800	3,034
		1,440	1.88	1,500	4'11"	1,085	2,392	6	1,800	3,034	1,700	2,865	1,700	2,865	1,500	2,528
	1,320	1.73	1,420	4'8"	999	2,202	5	1,800	3,034	1,800	3,034	1,800	3,034	1,700	2,865	
	1,320	1.73	1,420	4'8"	1,041	2,295	5	1,800	3,034	1,800	3,034	1,800	3,034	1,700	2,865	
	HD	480	0.63	600	2'0"	738	1,627	3	2,100	3,540	2,100	3,540	2,100	3,540	2,100	3,540
		480	0.63	600	2'0"	675	1,488	3	2,100	3,540	2,100	3,540	2,100	3,540	2,100	3,540
		750	0.98	900	2'11"	872	1,922	4	2,100	3,540	2,100	3,540	2,100	3,540	2,100	3,540
		750	0.98	900	2'11"	808	1,781	4	2,100	3,540	2,100	3,540	2,100	3,540	2,100	3,540
		920	1.2	1,050	3'5"	951	2,097	4	2,100	3,540	2,100	3,540	2,100	3,540	2,100	3,540
		920	1.2	1,050	3'5"	888	1,958	4	2,100	3,540	2,100	3,540	2,100	3,540	2,100	3,540
1,090		1.43	1,200	3'11"	1,046	2,306	5	2,100	3,540	2,100	3,540	2,100	3,540	2,000	3,371	
1,090		1.43	1,200	3'11"	983	2,167	5	2,100	3,540	2,100	3,540	2,100	3,540	2,100	3,540	
1,270	1.66	1,380	4'6"	1,045	2,304	5	2,100	3,540	2,000	3,371	2,000	3,371	1,700	2,865		
1,270	1.66	1,380	4'6"	1,108	2,443	5	2,100	3,540	1,900	3,203	1,900	3,203	1,700	2,865		

Please consult with your Volvo dealer for the proper match of buckets and attachments to suit the application.
(In case of using bigger bucket than regional standard MRS, consultation with R&D is highly recommended)

The recommendations are given as a guide only, based on typical operation conditions.

Bucket capacity based on ISO 7451, heaped material with a 1:1 angle of repose.

Maximum load : Payload, bucket and additional tools such as quick coupler, rotator,

VA Boom : Variable angle boom or two-piece boom

Specifications

LIFTING CAPACITY EC230F L

Lifting capacity at the arm end without bucket. For lifting capacity including bucket, simply subtract actual weight of the direct fit bucket or the bucket with quick coupler from the following values.

	Lifting hook related to ground level		1.5 m / 5 ft		3.0 m / 10 ft		4.5 m / 15 ft		6.0 m / 20 ft		7.5 m / 25 ft		Max. reach		Max.	
			Along UC	Across UC	Along UC	Across UC	Along UC	Across UC	Along UC	Across UC	Along UC	Across UC	Along UC	Across UC		
Boom : 5.7 m GP 18'8" GP Arm : 2.5 m HD 8'2" HD Shoe : 800 mm 32" CWT : 4,600 kg 10,140 lb	7.5 m	kg												*5,680	*5,680	5.6 m
	25 ft	lb												*12,560	*12,560	18.0 ft
	6.0 m	kg							*5,500	*5,500				*5,600	4,770	6.8 m
	20 ft	lb							*12,110	*12,110				*12,360	10,670	22.3 ft
	4.5 m	kg					*6,970	*6,970	*6,010	5,760	*5,680	4,070		*5,690	3,990	7.6 m
	15 ft	lb					*15,040	*15,040	*13,090	12,420				*12,530	8,850	24.8 ft
	3.0 m	kg					*8,970	8,340	*6,880	5,510	*5,980	3,970		5,530	3,610	8.0 m
	10 ft	lb					*19,310	18,010	*14,940	11,890	*13,080	8,560		12,230	7,990	26.2 ft
	1.5 m	kg					*10,730	7,850	*7,780	5,270	5,970	3,860		5,360	3,480	8.1 m
	5 ft	lb					*23,160	16,930	*16,860	11,370	12,870	8,330		11,820	7,670	26.5 ft
	0 m	kg					*11,530	7,620	8,140	5,110	5,890	3,790		5,500	3,550	7.9 m
	0 ft	lb					*24,980	16,440	17,540	11,040	12,700	8,180		12,130	7,830	25.8 ft
	-1.5 m	kg			*10,800	*10,800	*11,460	7,590	8,090	5,070				6,030	3,870	7.4 m
	-5 ft	lb			*24,670	*24,670	*24,840	16,360	17,430	10,940				13,330	8,560	24.1 ft
	-3.0 m	kg			*14,740	*14,740	*10,550	7,700	*7,780	5,140				*6,990	4,670	6.5 m
	-10 ft	lb			*31,960	*31,960	*22,810	16,590	*16,720	11,120				*15,440	10,380	21.1 ft
-4.5 m	kg			*11,410	*11,410	*8,150	7,990						*7,140	6,930	5.0 m	
-15 ft	lb			*24,390	*24,390	*17,220	*17,220						*15,720	*15,720	16.0 ft	
Boom : 5.7 m GP 18'8" GP Arm : 2.9 m HD 9'6" HD Shoe : 800 mm 32" CWT : 4,600 kg 10,140 lb	7.5 m	kg							*5,180	*5,180				*4,960	*4,960	6.2 m
	25 ft	lb												*11,040	*11,040	19.8 ft
	6.0 m	kg							*5,070	*5,070				*4,630	4,340	7.3 m
	20 ft	lb							*11,160	*11,160				*10,230	9,710	23.8 ft
	4.5 m	kg							*5,640	*5,640	*5,330	4,120		*4,570	3,700	8.0 m
	15 ft	lb							*12,290	*12,290	*11,730	8,860		*10,060	8,200	26.2 ft
	3.0 m	kg					*8,390	*8,390	*6,560	5,570	*5,730	4,010		*4,690	3,380	8.4 m
	10 ft	lb					*18,060	*18,060	*14,240	12,030	*12,510	8,640		*10,320	7,460	27.4 ft
	1.5 m	kg					*10,290	7,930	*7,520	5,310	5,990	3,880		*5,010	3,260	8.5 m
	5 ft	lb					*22,200	17,110	*16,310	11,460	12,920	8,370		*11,010	7,190	27.8 ft
	0 m	kg			*5,420	*5,420	*11,350	7,630	8,160	5,120	5,890	3,780		5,120	3,310	8.3 m
	0 ft	lb			*12,560	*12,560	*24,560	16,450	17,570	11,050	12,690	8,170		11,300	7,310	27.1 ft
	-1.5 m	kg	*6,270	*6,270	*10,310	*10,310	*11,510	7,550	8,070	5,040	5,860	3,750		5,560	3,580	7.8 m
	-5 ft	lb	*14,060	*14,060	*23,460	*23,460	*24,960	16,270	17,380	10,890	12,640	8,120		12,290	7,910	25.5 ft
	-3.0 m	kg	*11,370	*11,370	*15,560	14,800	*10,870	7,620	*8,050	5,080				6,580	4,210	7.0 m
	-10 ft	lb	*25,560	*25,560	*33,730	31,720	*23,520	16,430	*17,370	10,980				14,620	9,350	22.7 ft
-4.5 m	kg			*12,680	*12,680	*9,020	7,860						*6,890	5,810	5.6 m	
-15 ft	lb			*27,220	*27,220	*19,270	16,970						*15,200	13,120	18.1 ft	
Boom : 5.7 m GP 18'8" GP Arm : 2.9 m GP 9'6" GP Shoe : 800 mm 32" CWT : 4,600 kg 10,140 lb	7.5 m	kg							*5,210	*5,210				*4,970	*4,970	6.2 m
	25 ft	lb												*11,060	*11,060	19.8 ft
	6.0 m	kg							*5,100	*5,100				*4,630	4,370	7.3 m
	20 ft	lb							*11,220	*11,220				*10,250	9,760	23.8 ft
	4.5 m	kg							*5,670	*5,670	*5,360	4,140		*4,580	3,720	8.0 m
	15 ft	lb							*12,360	*12,360	*11,800	8,920		*10,080	8,260	26.2 ft
	3.0 m	kg					*8,430	*8,430	*6,590	5,600	*5,760	4,030		*4,700	3,400	8.4 m
	10 ft	lb					*18,150	*18,150	*14,310	12,090	*12,580	8,690		*10,350	7,520	27.4 ft
	1.5 m	kg					*10,340	7,970	*7,560	5,340	6,020	3,910		*5,020	3,280	8.5 m
	5 ft	lb					*22,320	17,210	*16,400	11,530	12,980	8,430		*11,030	7,250	27.8 ft
	0 m	kg			*5,430	*5,430	*11,400	7,680	8,200	5,160	5,920	3,810		5,150	3,340	8.3 m
	0 ft	lb			*12,580	*12,580	*24,680	16,560	17,650	11,130	12,760	8,230		11,360	7,370	27.1 ft
	-1.5 m	kg	*6,280	*6,280	*10,320	*10,320	*11,570	7,600	8,110	5,080	5,880	3,780		5,590	3,610	7.8 m
	-5 ft	lb	*14,080	*14,080	*23,480	*23,480	*25,080	16,380	17,460	10,970	12,700	8,180		12,350	7,970	25.5 ft
	-3.0 m	kg	*11,380	*11,380	*15,630	14,880	*10,920	7,670	*8,090	5,120				6,610	4,240	7.0 m
	-10 ft	lb	*25,580	*25,580	*33,880	31,890	*23,640	16,530	*17,460	11,060				14,690	9,410	22.7 ft
-4.5 m	kg			*12,740	*12,740	*9,070	7,900						*6,930	5,840	5.6 m	
-15 ft	lb			*27,350	*27,350	*19,370	17,060						*15,290	13,190	18.1 ft	

Notes: 1. Machine in "Fine Mode-F" (Power Boost) for lifting capacities. 2. The above loads are in compliance with SAE J1097 and ISO 10567 Hydraulic Excavator Lifting Capacity Standards. 3. Rated loads do not exceed 87% of hydraulic lifting capacity or 75% of tipping load. 4. Rated loads marked with an asterisk (*) are limited by hydraulic capacity rather than tipping load.

LIFTING CAPACITY EC230F L

Lifting capacity at the arm end without bucket. For lifting capacity including bucket, simply subtract actual weight of the direct fit bucket or the bucket with quick coupler from the following values.

	Lifting hook related to ground level	1.5 m / 5 ft		3.0 m / 10 ft		4.5 m / 15 ft		6.0 m / 20 ft		7.5 m / 25 ft		Max. reach		Max.																		
		Along UC	Across UC	Along UC	Across UC	Along UC	Across UC	Along UC	Across UC	Along UC	Across UC	Along UC	Across UC																			
Boom : 5.7 m GP 18'8" GP Arm : 3.5 m GP 11'6" GP Shoe : 800 mm 32" CWT : 4,600 kg 10,140 lb	7.5 m	kg												*4,250	*4,250	6.8 m																
	25 ft	lb												*9,440	*9,440	21.9 ft																
	6.0 m	kg												*4,610	4,220	*4,040	3,910	7.8 m														
	20 ft	lb												*9,980	9,060	*8,920	8,730	25.5 ft														
	4.5 m	kg												*5,010	*5,010	*4,820	4,150	*4,020	3,380	8.5 m												
	15 ft	lb												*10,920	*10,920	*10,580	8,940	*8,860	7,490	27.8 ft												
	3.0 m	kg														*11,270	*11,270	*7,410	*7,410	*5,980	5,630	*5,300	4,020	*4,150	3,100	8.8 m						
	10 ft	lb														*23,950	*23,950	*15,980	*15,980	*12,990	12,140	*11,560	8,660	*9,150	6,850	29.0 ft						
	1.5 m	kg																*9,520	8,060	*7,050	5,340	*5,860	3,870	*4,450	2,980	8.9 m						
	5 ft	lb																*20,550	17,380	*15,290	11,520	*12,760	8,350	*9,790	6,590	29.3 ft						
	0 m	kg																*7,050	*7,050	*10,940	7,660	*7,910	5,110	5,850	3,750	4,690	3,020	8.7 m				
	0 ft	lb																*16,140	*16,140	*23,670	16,520	*17,150	11,030	12,620	8,090	10,340	6,660	28.7 ft				
	-1.5 m	kg														*6,210	*6,210	*10,310	*10,310	*11,470	7,500	8,020	4,990	5,780	3,680	5,030	3,220	8.3 m				
	-5 ft	lb														*13,880	*13,880	*23,400	*23,400	*24,860	16,160	17,270	10,770	12,470	7,950	11,110	7,120	27.2 ft				
	-3.0 m	kg														*10,120	*10,120	*15,210	14,590	*11,190	7,510	8,010	4,980	5,810	3,710	5,800	3,700	7.5 m				
-10 ft	lb														*22,720	*22,720	*34,600	31,280	*24,220	16,180	17,250	10,760		12,870	8,210	24.5 ft						
-4.5 m	kg														*15,160	*15,160	*14,260	*14,260	*9,910	7,670	*7,170	5,110			*6,700	4,820	6.3 m					
-15 ft	lb														*34,230	*34,230	*30,700	*30,700	*21,310	16,540	*15,230	11,060			*14,830	10,820	20.3 ft					
Boom : 5.7 m HD 18'8" HD Arm : 2.0 m ME 6'7" ME Shoe : 800 mm 32" CWT : 4,600 kg 10,140 lb	7.5 m	kg												*6,290	*6,290	4.9 m																
	25 ft	lb												*13,960	*13,960	15.6 ft																
	6.0 m	kg																		*6,030	5,800			*6,070	5,350	6.3 m						
	20 ft	lb																		*13,330	12,460			*13,390	12,020	20.4 ft						
	4.5 m	kg																		*7,640	*7,640	*6,410	5,650			*6,110	4,350	7.1 m				
	15 ft	lb																		*16,470	*16,470	*13,970	12,190			*13,460	9,660	23.2 ft				
	3.0 m	kg																		*9,600	8,120	*7,210	5,410	6,030	3,900	6,010	3,890	7.5 m				
	10 ft	lb																		*20,650	17,550	*15,640	11,680			13,280	8,610	24.6 ft				
	1.5 m	kg																				*7,990	5,180	5,930	3,820	5,800	3,740	7.6 m				
	5 ft	lb																				*17,310	11,200			12,800	8,250	25.0 ft				
	0 m	kg																		*11,520	7,540	8,090	5,060			5,980	3,830	7.4 m				
	0 ft	lb																		*24,980	16,250	17,440	10,920			13,200	8,450	24.3 ft				
	-1.5 m	kg																				*11,140	7,570	8,080	5,050			6,680	4,250	6.9 m		
	-5 ft	lb																				*24,180	16,300	17,410	10,900			14,770	9,400	22.5 ft		
	-3.0 m	kg																				*13,310	*13,310	*9,900	7,720			*7,330	5,330	5.9 m		
-10 ft	lb																				*28,900	*28,900	*21,390	16,660			*16,170	11,870	19.2 ft			
Boom : 5.7 m HD 18'8" HD Arm : 2.5 m HD 8'2" HD Shoe : 800 mm 32" CWT : 4,600 kg 10,140 lb	7.5 m	kg												*5,660	*5,660	5.6 m																
	25 ft	lb												*12,530	*12,530	18.0 ft																
	6.0 m	kg																		*5,480	*5,480			*5,580	4,760	6.8 m						
	20 ft	lb																		*12,070	*12,070			*12,300	10,660	22.3 ft						
	4.5 m	kg																				*6,950	*6,950	*5,980	5,750	*5,650	4,050	*5,660	3,970	7.6 m		
	15 ft	lb																		*14,990	*14,990	*13,040	12,400			*12,470	8,820	24.8 ft				
	3.0 m	kg																		*8,930	8,320	*6,850	5,490	*5,950	3,960	5,520	3,600	8.0 m				
	10 ft	lb																		*19,230	17,980	*14,870	11,860	*13,010	8,530	12,210	7,950	26.2 ft				
	1.5 m	kg																				*10,680	7,810	*7,740	5,250	5,960	3,840	5,350	3,460	8.1 m		
	5 ft	lb																				*23,040	16,870	*16,770	11,330	12,840	8,290	11,790	7,630	26.5 ft		
	0 m	kg																				*11,470	7,580	8,130	5,090	5,870	3,770	5,480	3,530	7.9 m		
	0 ft	lb																				*24,840	16,350	17,500	10,980	12,670	8,130	12,090	7,780	25.8 ft		
	-1.5 m	kg																				*10,800	*10,800	*11,390	7,550	8,070	5,040		6,020	3,850	7.4 m	
	-5 ft	lb																				*24,670	*24,670	*24,700	16,270	17,380	10,870		13,300	8,510	24.1 ft	
	-3.0 m	kg																						*14,650	*14,650	*10,480	7,660	*7,740	5,110		*6,950	4,640
-10 ft	lb																						*31,770	*31,770	*22,680	16,500	*16,620	11,050		*15,340	10,320	21.1 ft
-4.5 m	kg																						*11,320	*11,320	*8,100	7,950			*7,090	6,900	5.0 m	
-15 ft	lb																						*24,210	*24,210	*17,100	*17,100			*15,600	*15,600	16.0 ft	

Notes: 1. Machine in "Fine Mode-F" (Power Boost) for lifting capacities. 2. The above loads are in compliance with SAE J1097 and ISO 10567 Hydraulic Excavator Lifting Capacity Standards. 3. Rated loads do not exceed 87% of hydraulic lifting capacity or 75% of tipping load. 4. Rated loads marked with an asterisk (*) are limited by hydraulic capacity rather than tipping load.

Specifications

LIFTING CAPACITY EC230F L

Lifting capacity at the arm end without bucket. For lifting capacity including bucket, simply subtract actual weight of the direct fit bucket or the bucket with quick coupler from the following values.

	Lifting hook related to ground level	kg	1.5 m / 5 ft		3.0 m / 10 ft		4.5 m / 15 ft		6.0 m / 20 ft		7.5 m / 25 ft		Max. reach		Max.	
			Along UC	Across UC	Along UC	Across UC	Along UC	Across UC	Along UC	Across UC	Along UC	Across UC	Along UC	Across UC		
Boom : 5.7 m HD 18'8" HD Arm : 2.9 m HD 9'6" HD Shoe : 800 mm 32" CWT : 4,600 kg 10,140 lb	7.5 m	kg							*5,170	*5,170			*4,960	*4,960	6.2 m	
	25 ft	lb											*11,040	*11,040	19.8 ft	
	6.0 m	kg							*5,060	*5,060			*4,630	4,340	7.3 m	
	20 ft	lb							*11,130	*11,130			*10,230	9,700	23.8 ft	
	4.5 m	kg							*5,620	*5,620	*5,310	4,110	*4,570	3,690	8.0 m	
	15 ft	lb							*12,250	*12,250	*11,680	8,840	*10,060	8,180	26.2 ft	
	3.0 m	kg					*8,350	*8,350	*6,530	5,560	*5,700	3,990	*4,690	3,360	8.4 m	
	10 ft	lb					*17,990	*17,990	*14,170	12,010	*12,450	8,610	*10,320	7,430	27.4 ft	
	1.5 m	kg					*10,240	7,900	*7,480	5,290	5,980	3,860	5,000	3,240	8.5 m	
	5 ft	lb					*22,100	17,050	*16,230	11,420	12,890	8,330	*11,010	7,150	27.8 ft	
	0 m	kg			*5,420	*5,420	*11,290	7,590	8,140	5,100	5,870	3,760	5,110	3,290	8.3 m	
	0 ft	lb			*12,560	*12,560	*24,430	16,360	17,530	11,000	12,660	8,120	11,270	7,260	27.1 ft	
	-1.5 m	kg	*6,270	*6,270	*10,310	*10,310	*11,450	7,510	8,050	5,010	5,840	3,730	5,540	3,560	7.8 m	
	-5 ft	lb	*14,060	*14,060	*23,460	*23,460	*24,830	16,170	17,340	10,820	12,600	8,070	12,250	7,860	25.5 ft	
	-3.0 m	kg	*11,370	*11,370	*15,470	14,720	*10,810	7,580	*8,010	5,050			6,560	4,180	7.0 m	
-10 ft	lb	*25,560	*25,560	*33,520	31,560	*23,380	16,340	*17,270	10,920			*14,550	9,290	22.7 ft		
-4.5 m	kg			*12,600	*12,600	*8,970	7,820					*6,840	5,780	5.6 m		
-15 ft	lb			*27,030	*27,030	*19,150	16,890					*15,100	13,060	18.1 ft		
Boom : 5.7 m HD 18'8" HD Arm : 2.9 m GP 9'6" GP Shoe : 800 mm 32" CWT : 4,600 kg 10,140 lb	7.5 m	kg							*5,190	*5,190			*4,970	*4,970	6.2 m	
	25 ft	lb											*11,060	*11,060	19.8 ft	
	6.0 m	kg							*5,080	*5,080			*4,630	4,360	7.3 m	
	20 ft	lb							*11,190	*11,190			*10,250	9,750	23.8 ft	
	4.5 m	kg							*5,650	*5,650	*5,340	4,130	*4,580	3,710	8.0 m	
	15 ft	lb							*12,310	*12,310	*11,740	8,890	*10,080	8,230	26.2 ft	
	3.0 m	kg					*8,390	*8,390	*6,570	5,590	*5,730	4,020	*4,700	3,390	8.4 m	
	10 ft	lb					*18,080	*18,080	*14,250	12,070	*12,520	8,670	*10,350	7,490	27.4 ft	
	1.5 m	kg					*10,290	7,950	*7,520	5,320	6,010	3,890	*5,020	3,270	8.5 m	
	5 ft	lb					*22,210	17,150	*16,310	11,490	12,950	8,390	*11,030	7,210	27.8 ft	
	0 m	kg			*5,430	*5,430	*11,340	7,640	8,180	5,130	5,900	3,790	5,140	3,320	8.3 m	
	0 ft	lb			*12,580	*12,580	*24,550	16,470	17,610	11,080	12,730	8,190	11,330	7,320	27.1 ft	
	-1.5 m	kg	*6,280	*6,280	*10,320	*10,320	*11,510	7,560	8,090	5,050	5,870	3,760	5,570	3,580	7.8 m	
	-5 ft	lb	*14,080	*14,080	*23,480	*23,480	*24,950	16,280	17,420	10,910	12,670	8,130	12,310	7,920	25.5 ft	
	-3.0 m	kg	*11,380	*11,380	*15,540	14,800	*10,860	7,630	*8,050	5,090			6,590	4,210	7.0 m	
-10 ft	lb	*25,580	*25,580	*33,680	31,720	*23,500	16,440	*17,360	11,000			*14,630	9,360	22.7 ft		
-4.5 m	kg			*12,660	*12,660	*9,010	7,860					*6,880	5,820	5.6 m		
-15 ft	lb			*27,170	*27,170	*19,250	16,980					*15,180	13,130	18.1 ft		
Boom : 5.7 m HD 18'8" HD Arm : 3.5 m GP 11'6" GP Shoe : 800 mm 32" CWT : 4,600 kg 10,140 lb	7.5 m	kg											*4,250	*4,250	6.8 m	
	25 ft	lb												*9,440	*9,440	21.9 ft
	6.0 m	kg									*4,590	4,220	*4,040	3,910	7.8 m	
	20 ft	lb									*9,980	9,050	*8,920	8,720	25.5 ft	
	4.5 m	kg							*4,990	*4,990	*4,800	4,150	*4,020	3,370	8.5 m	
	15 ft	lb							*10,890	*10,890	*10,530	8,920	*8,860	7,470	27.8 ft	
	3.0 m	kg			*11,230	*11,230	*7,390	*7,390	*5,960	5,620	*5,270	4,010	*4,150	3,080	8.8 m	
	10 ft	lb			*23,880	*23,880	*15,920	*15,920	*12,940	12,130	*11,510	8,640	*9,150	6,820	29.0 ft	
	1.5 m	kg					*9,480	8,040	*7,010	5,320	*5,830	3,860	*4,450	2,970	8.9 m	
	5 ft	lb					*20,450	17,340	*15,210	11,490	*12,700	8,310	*9,790	6,550	29.3 ft	
	0 m	kg			*7,050	*7,050	*10,880	7,630	*7,870	5,090	5,840	3,730	4,680	3,000	8.7 m	
	0 ft	lb			*16,140	*16,140	*23,550	16,440	*17,060	10,980	12,590	8,040	10,310	6,620	28.7 ft	
	-1.5 m	kg	*6,210	*6,210	*10,310	*10,310	*11,410	7,460	8,000	4,960	5,770	3,660	5,010	3,200	8.3 m	
	-5 ft	lb	*13,880	*13,880	*23,400	*23,400	*24,720	16,070	17,220	10,710	12,440	7,900	11,070	7,080	27.2 ft	
	-3.0 m	kg	*10,120	*10,120	*15,210	14,510	*11,120	7,470	7,990	4,950	5,790	3,680	5,780	3,680	7.5 m	
-10 ft	lb	*22,720	*22,720	*34,600	31,100	*24,080	16,090	17,200	10,690			12,840	8,160	24.5 ft		
-4.5 m	kg	*15,160	*15,160	*14,170	*14,170	*9,850	7,630	*7,120	5,080			*6,660	4,790	6.3 m		
-15 ft	lb	*34,230	*34,230	*30,500	*30,500	*21,170	16,460	*15,130	11,000			*14,740	10,770	20.3 ft		

Notes: 1. Machine in "Fine Mode-F" (Power Boost) for lifting capacities. 2. The above loads are in compliance with SAE J1097 and ISO 10567 Hydraulic Excavator Lifting Capacity Standards. 3. Rated loads do not exceed 87% of hydraulic lifting capacity or 75% of tipping load. 4. Rated loads marked with an asterisk (*) are limited by hydraulic capacity rather than tipping load.

Equipment

STANDARD AND OPTIONAL EQUIPMENT

• = Standard / o = Optional

Engine

Turbocharged, 4 stroke diesel engine with water cooling, direct injection and charged air cooler that meets Tier 4f requirements	•
Electric cooling fan system	•
New work mode with 10 steps	•
Cyclone pre-cleaner	•
Fuel shut off valve	•
Engine block heater	o
Coolant heater by diesel	o
Reversible fan drive	o
Precleaner, oil bath	o
Air filter, High efficiency	o
Delayed engine shutdown	•
Automatic engine shutdown	o
Water separator with heater	o
Arctic regeneration	o
Regeneration control	o
Oil sampling port for engine oil	o

Electric / Electronic control system

Anti-theft with code lock system	•
Alternator, 180 A	•
Automatic idling system	•
Lock Out / Tag Out function on battery main switch	•
Standard light	•
Basic light package	o
Advanced light package	o
Deluxe light package	o
Arm light	o
LH light	o

Undercarriage and structures

3-point side access	•
Link 600 mm (24") single grouser shoe	o
Link 600 mm (24") add rubber pad shoe	o
Direct filling DEF (AdBlue) / Sight gauge and splash guard	•
Openable 1 piece hood	•
Link 700 mm (28") double grouser shoe	o
Platform handrail fixed & Guardrail, foldable	•
Full track guard	o
Counterweight 5,400 kg (10,900 lb)	o
Inner rail	•
SIPS (Side Impact Protection Steel)	o
HD Side door & hood with screen	o
Without lower structure	o
Lower frame NL, N, NH, High walker	o
Link 500/600/700/800/900 mm (20/24/28/32/36") triple grouser shoe	o
Link 600 mm (24") triple grouser shoe, HD	o

STANDARD AND OPTIONAL EQUIPMENT

• = Standard / o = Optional

Hydraulic system

EH-positive (Electro-Hydraulic) control system	•
Boom up & swing priority	•
Auto warm up	•
Auto power boost	•
One touch power boost	•
Priority Adjustment	•
Boom down speed control	•
Shock reduction function	•
Joystick, 4 switch / 4 switch & 1 proportional / Simple L8 / L8	o
Hydraulic oil mineral, 32 / 46 / 68	o
Longlife hyd oil mineral, 32 / 46 / 68	o
Hydraulic oil bio 46	o
Pattern change	•
Boom float function	•
Straight travel pedal	o
Comfort driving control	o
Creep mode	•
Dedicated drain line	o
Variable X3 P-Q control	o
Hose rupture valve for boom	o
Hose rupture valve for arm	o
X1/X3/QF Piping on Long Reach Boom & Arm	o

Cab and interior

Keyless engine start and stop	•
8" HD display	•
ROPS certified cab	•
Tiltable left console	•
Digital hour meter	•
Wireless mobile charger with Kinematic sensor package option	•
Various storage space with cool/heated	•
Cleaning air gun preparation	o
1 piece wind shield cab	o
High visibility cab	o
Cabin large mirror	o
Cabin large mirror, Heated	o
Basic / Premium / Deluxe seat	o
Seat belt, 2 inch 2 point / 3 inch 2 point / 3 inch 3 point	o
Climate control-HEPA filter	o
Radio with MP3/USB/Bluetooth	o
Front rain shield	o
Sun screen	•
Lower wiper	o
Sun shield, roof hatch	o
Foot rest, High mount	o
FOG (Falling Object Guard)	o
FOPS (Falling Object Protection Structure)	o
Safety net	o

STANDARD AND OPTIONAL EQUIPMENT

• = Standard / o = Optional

Digging equipment

GP 5.7 m (18'8") boom	•
HD 5.7 m (18'8") boom / VA 5.57 m (18'3") boom / LR 8.85 m (29'0") boom	o
HD 2.9 m (9'6") arm	•
GP 2.9 m (9'6") arm/ ME 2.0 m (6'7") arm/ HD 2.5 m (8'2") arm/ GP 3.5 m (11'6") arm	o

Machine controls

Kinematic sensor package	•
Volvo Co-Pilot 2nd display, 12.8" touchable Full HD	•
Dig Assist, Start	•
Dig Assist, 2D	o
Dig Assist, In-Field Design	o
Dig Assist, Topcon 3D-MC	o
Dig Assist, Trimble Earthworks	o
Dig Assist, Infield-Design Advanced	o
Dig Assist, On-Board Weighing	o
Dig Assist, Laser Receiver	•
Volvo Active Control	o
Dig Assist, Boundary Limit	•

Service and maintenance

Fuel level gauge	•
Swing out A/C condenser	•
Fuel filler pump	o
Quick Hydraulic Oil Fill connection	o
Quick Engine Oil Change	o
Jump start connector	o
Auto lubrication system	o
Tool kit	o

Safety and security

Travel alarm, beep / white noise	o
Flashing beacon, LED	o
Green light beacon	o
Rear view camera	•
Side view camera	o
HD VSV(Volvo Smart View)	o
HD VSV with obstacle detection	o
Provision, HD VSV with obstacle detection	•

V O L V O