



Volvo Construction Equipment

PL3005D, PL4809D

Volvo Pipelayers Tipping capacity PL3005D: 51 t / 112,000 lb | PL4809D: 90/102 t / 197,000/225,000 lb





360° swing

Take advantage of ultimate lift and positioning performance with Volvo's 360° swing capability. The excavator-based design enables the upper structure to swing 360° – providing you with infinite pipe placement possibilities.

New levels of maneuverability

Volvo's revolutionary excavator-based rotating pipelayers deliver a competitive edge in the most demanding conditions. Featuring 360° swing capability for unlimited pipe placement options, you'll discover more opportunities with Volvo.

Transportation

The PL3005D is easily transported without disassembling components – simplifying road transportation.



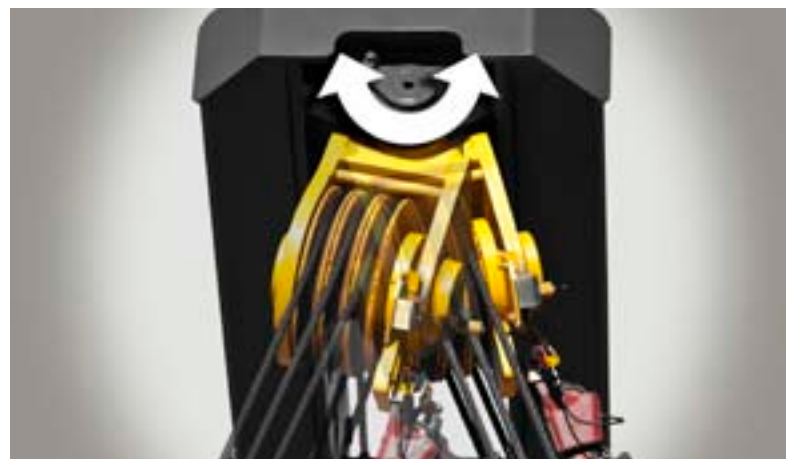
Mode switch

Use split pump flow for better load controllability during simultaneous travel/lifting operations and combined pump flow for maximum performance speed when traveling or in stationary pipe laying operations. The Fine (F) Work Mode gives high pressure and low flow for maximum lifting power and minimal fuel use.



Single lever control

For ease of operation, the optional, multi-functional joystick gives the operator simultaneous and precise control of the hydraulic functions. Forward, reverse and kick-down functions are also included on the console.



Flag block

Mounted at the end of the boom, the flag block pivots to the left and right to enable load self-centering and prevent damage to the wire rope. This increases safety when moving pipe on a slope.

Lifting your productivity

Get a grip on your workload with Volvo's pipelayers. Featuring best-in-class lifting capacity and stability, you can trust Volvo to help you get the job done quickly, efficiently and safely.

Working range

Volvo pipelayers feature long booms which, together with the boom mounting position, provide a higher hook height and reach – allowing the machines to easily lift and lower pipes from a safe distance.



Boom extension

If more reach is needed, pre-prepared booms allow for quick and easy installation of an optional boom extension. This provides the same lifting capacity but with more versatility from improved reach and hook height – ideal for pipe unloading and tie-ins.



PL4809D

Additional counterweights, mounted on the track side frames, lower the center of gravity for greater stability. This design enables easy cleaning for more machine uptime.



PL3005D

The PL3005D features an extra heavy counterweight for increased stability when lifting or using a boom extension.



Best in class

Superior lifting capacity and stability make Volvo's pipelayers the most productive and safe machines for the job. With a 51 ton tipping capacity, the PL3005D handles large, heavy pipe with ease. *90 ton tipping capacity for the PL4809D.



LMS

The Load Management System allows operators to see what they can safely pick up relative to the slope. By monitoring slope inclinations as well as boom angle and orientation, the operator can easily manage the load at all times.

Unrivalled safety

Safety is at the forefront of Volvo's pipelayer design. The unique Load Management System (LMS) is just one of the built-in safety features that will help to increase your performance and productivity. A Volvo pipelayer won't let you down.

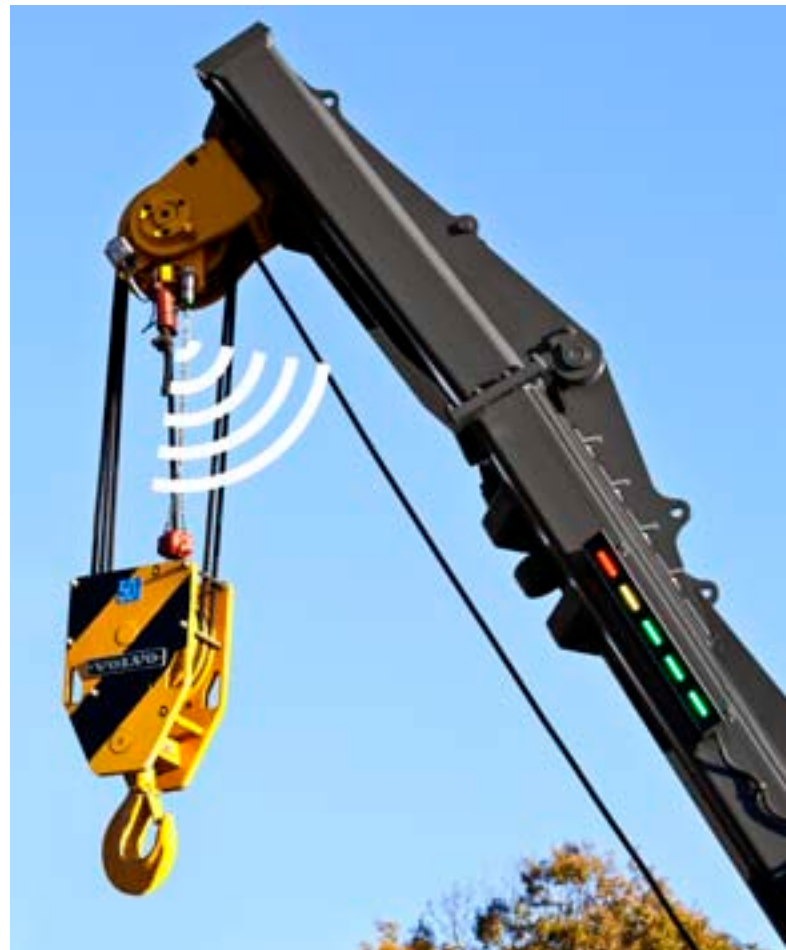
LMS monitor

The operator receives machine load information, via wireless sensors, to the cab monitor. Visible and audible warning signals alert the operator when the load limit is reached.



LMS light bar

For increased safety, three different color (green, yellow and red) LED-lights on either side of the boom indicate the pipelayer's load status to other operators and the lowering-in foreman.



Anti two-block

The mechanical anti two-block system, which features a wireless sensor, prevents the winch blocks from coming into contact during lifting – increasing safety.

Get productive in comfort

Volvo understands the importance of operator comfort. That's why we've carefully designed an industry leading, raised cab with built in comfort and excellent all-round visibility. Operators will feel in control and perform efficiently all day long in this superior working environment.

Winch control

Volvo's operator friendly design allows you to choose your preferred joystick to operate the winch – simply select left or right via a pattern change control valve.



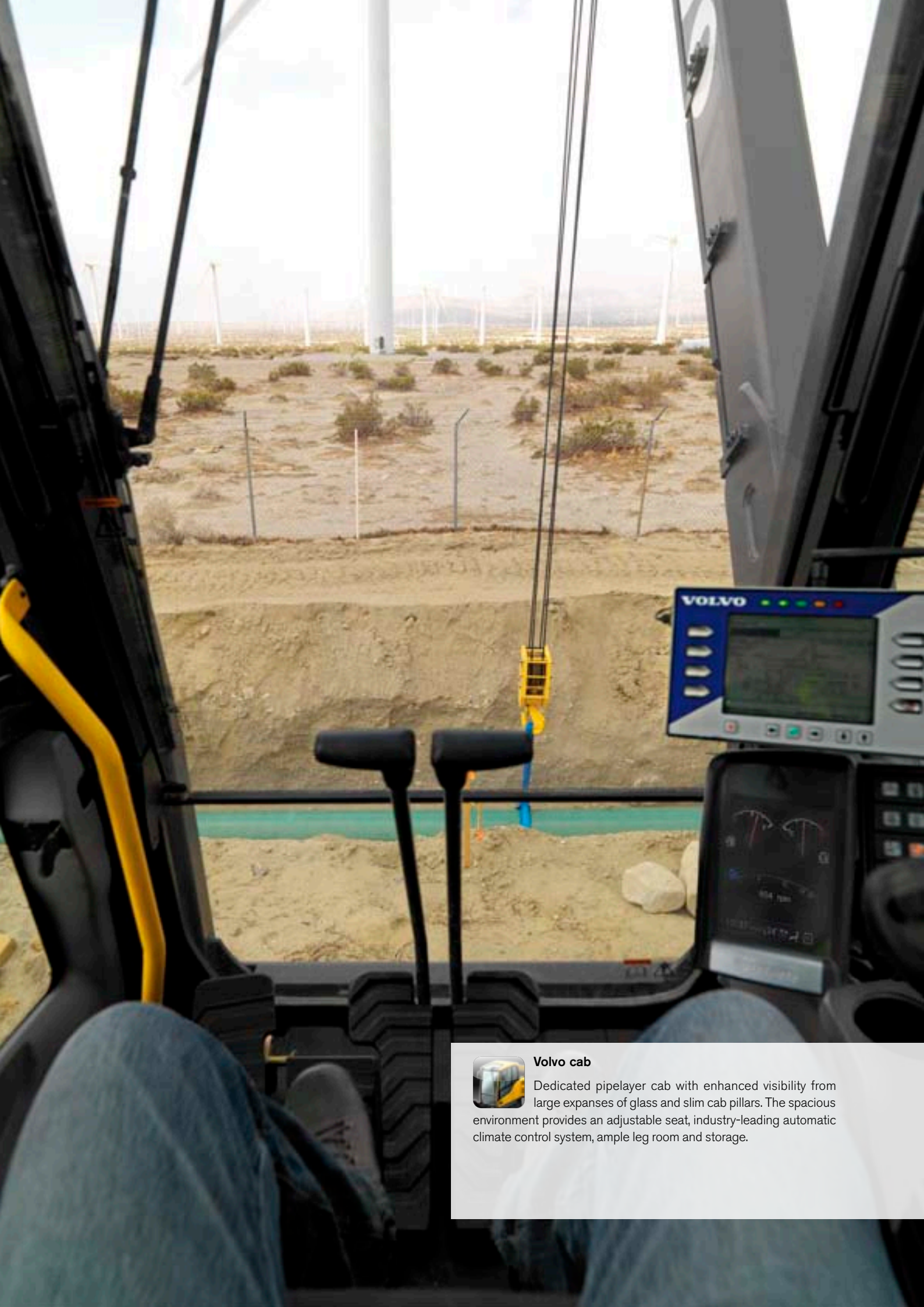
Hydraulically elevated cab

In the elevated position, the unique four-bar cab riser system gives the operator excellent visibility into the trench as well as the surrounding worksite. In the lowered position, the pipelayer is easy to transport.



Cameras

For increased safety, a rear view and side view camera provide increased visibility via the color I-ECU monitor - view both images together or individually.



Volvo cab

Dedicated pipelayer cab with enhanced visibility from large expanses of glass and slim cab pillars. The spacious environment provides an adjustable seat, industry-leading automatic climate control system, ample leg room and storage.



Reversed cylinder

The reverse mounted cylinder and optimized cylinder diameter and length greatly improve lateral visibility.

Working range

Volvo pipelayers feature long booms which, together with the boom mounting position, provide a higher hook height and reach.

Anti two-block device

For increased safety and machine uptime, the anti two-block system prevents the winch blocks from coming into contact during lifting.

Commonality

Commonality between pipelayer and excavator wear and maintenance parts ensures there is high availability of spare parts.



LMS

Utilizing wireless sensors the Load Management System allows operators to see what they can safely pick up relative to the slope.



Best in class

Superior lifting capacity and stability make Volvo's pipelayers the most productive and safe machines for the job.



Easy conversion

Quickly and easily convert from rotating pipelayer to excavator with the optional digging equipment.

Transportation ease

For easy relocation, the PL4809D has a hydraulically retractable undercarriage and the PL3005D does not require component disassembly before transportation.

Pipelayer supremacy

Winch

Volvo's operator friendly design allows you to choose your preferred joystick to operate the winch.



360° swing

The superstructure can swing 360° providing you with infinite pipe placement possibilities.



Four bar cab riser

When elevated, the unique four bar cab riser system provides excellent visibility to the worksite and into the trench.



Serviceability

Grouped filters and service points are quick to access at ground level via large, wide compartment doors.

Slew lock

A heavy-duty, mechanical slew lock secures the superstructure at any angle to the undercarriage when holding a load on a slope or during tie-ins.

PL4809D Improved tractive force

A 70% improvement in tractive force allows the pipelayer to maneuver over tough terrain and climb a 30° slope while carrying a heavy load. The machine can also travel faster than its predecessor over flat ground.





Easy conversion

The pipelayer's hydraulic system is designed to be optimized for both pipelayer and excavator operations. Easily convert your machine with digging equipment (available as an option) for excellent digging power and performance equal to a standard excavator.

Extreme versatility

Volvo's excavator-based rotating pipelayers are designed to help you get the most out of your investment. The versatile machines can easily be converted to a standard excavator or used in other heavy lift applications, ensuring maximum machine uptime. Do more with Volvo.

Fast conversion

Two people can quickly convert the pipelayer to an excavator in just one day thanks to factory pre-installed hydraulic lines and connections.



AMS

The Attachment Management System (AMS) stores up to 18 attachment pre-sets and permits hydraulic flow (standard) and pressure (optional) to be adjusted, enabling the use of various attachments for increased versatility.

Maximizing your uptime

On site, time means money. That's why Volvo pipelayers boast easy access to grouped service points for fast and effortless maintenance and service checks. Commonality between genuine Volvo wear and maintenance parts ensures high availability, ensuring maximum machine uptime.

Remote filters

The filters are separate from the engine and radiator for easier cleaning and servicing – giving you more machine uptime. Independent coolers provide excellent cooling.



Genuine Volvo Parts

For the highest levels of quality, use only Genuine Volvo Parts. High availability and low costs are delivered through commonality of pipelayer and excavator wear and maintenance parts.

CareTrack*

Each Volvo pipelayer is equipped with CareTrack, the Volvo telematics system, as standard. Save fuel. Reduce costs. Maximize profitability. You can with CareTrack.

* In markets where CareTrack is available.



Serviceability

Grouped filters and service points are quick to access via large, wide compartment doors and are located at ground level wherever possible. Easy access for maintenance means regular checks get done faster, giving you more uptime.

Volvo PL3005D, PL4809D in detail

Engine

Volvo pipelayers use state-of-the-art diesel engines with Volvo Advanced Combustion Technology (V-ACT) to deliver lower emissions, superior performance and fuel efficiency. The EU Stage IIIB / EPA Tier 4 compliant engine uses precise, high-pressure fuel injectors, turbo charger and air-to-air intercooler as well as electronic engine controls to optimize machine performance.

PL3005D

| Engine | | Volvo | | D8H | |
|--------------------------------|---------------------|-----------------|------------------|------------|--|
| Max power at | | r/s / rpm | | 30 / 1 800 | |
| Net, ISO 9249/ SAE J1349 | kW / hp (metric) | hp | 169 / 230 | 227 | |
| Gross, ISO 14396/ SAE J1995 | kW / hp (metric) | hp | 170/231 | 228 | |
| Max torque at | Nm / rpm | lbf ft | 1 139 / 1 350 | 840 | |
| No. of cylinders | | 6 | | | |
| Displacement | l | in ³ | 7.8 | 476 | |
| Bore | mm | in | 110 | 4.3 | |
| Stroke | mm | in | 138 | 5.4 | |

PL4809D

| Engine | | Volvo | | D13H | |
|--------------------------------|---------------------|-----------------|------------------|----------|--|
| Max power at | | r/s / rpm | | 30/1 800 | |
| Net, ISO 9249/ SAE J1349 | kW / hp (metric) | hp | 256 / 348 | 343 | |
| Gross, ISO 14396/ SAE J1995 | kW / hp (metric) | hp | 265 / 360 | 355 | |
| Max torque at | Nm / rpm | lbf ft | 1 800 / 1 400 | 1 327 | |
| No. of cylinders | | 6 | | | |
| Displacement | l | in ³ | 12.8 | 781 | |
| Bore | mm | in | 131 | 5.2 | |
| Stroke | mm | in | 158 | 6.2 | |

Engine *

The engine, in compliance with EU Stage IIIA / EPA Tier 3 emission regulation, which provide excellent performance, is equipped with six cylinder, vertical, electronic-controlled high pressure fuel injectors, internal EGR* (*for certain regions), 7 liter in-line waste gate turbo charger, air-to-air intercooler and water cooled diesel engine type.

PL3005D *

| Engine | | Volvo | | D7F | |
|--------------------------------|------------------|-----------------|------------------|------------|--|
| Max power at | | r/s / rpm | | 30 / 1 800 | |
| Net, ISO 9249/ SAE J1349 | kW / hp (metric) | | | 169 / 230 | |
| Gross, ISO 14396/ SAE J1995 | kW / hp (metric) | | | 170 / 231 | |
| Max torque at | Nm / rpm | lbf ft | 1 080 / 1 350 | 797 | |
| No. of cylinders | | 6 | | | |
| Displacement | l | in ³ | 7.1 | 433 | |
| Bore | mm | in | 108 | 4.2 | |
| Stroke | mm | in | 130 | 5.1 | |

PL4809D *

| Engine | | Volvo | | D13F | |
|--------------------------------|------------------|-----------------|------------------|------------|--|
| Max power at | | r/s / rpm | | 30 / 1 800 | |
| Net, ISO 9249/ SAE J1349 | kW / hp (metric) | | | 256 / 348 | |
| Gross, ISO 14396/ SAE J1995 | kW / hp (metric) | | | 265 / 360 | |
| Max torque at | Nm / rpm | lbf ft | 1 800 / 1 400 | 1 327 | |
| No. of cylinders | | 6 | | | |
| Displacement | l | in ³ | 12.8 | 781 | |
| Bore | mm | in | 131 | 5.2 | |
| Stroke | mm | in | 158 | 6.2 | |

* Machines designed for non-regulated markets

Electrical system

The high capacity electrical system is well protected. Waterproof double lock harness plugs are used to secure corrosion-free connections. Main relays and solenoid valves are shielded to prevent damage.

Track Drive System

Each track is powered by an automatic shift two speed travel motor. Track brakes are multi-disc, spring applied and hydraulically released. Travel motors, brakes and planetary final drives are well protected within the track frame. *PL4809D has user adjustable variable speed motors

Travel speed

| | | | | |
|-----------|------|-----|-----|-----|
| PL3005D | km/h | mph | 5,9 | 3,5 |
| PL3005D * | km/h | mph | 5,5 | 3,4 |
| PL4809D | km/h | mph | 6 | 3,7 |
| PL4809D | km/h | mph | 6 | 3,7 |

Undercarriage

PL4809D : The hydraulically variable gauge system provides a wide gauge for working stability which can be retracted for reduced transport width. Removable track frame mounted counterweights provide added stability and lower the machine center of gravity – they are easily removed to reduce transport weight.

Hydraulic system

The hydraulic system is designed for high productivity, high lifting capabilities, high maneuvering precision and superb fuel economy.

PL3005D

| | | | | |
|--|-------|-----|---------|--------|
| Main pump, type 2 x variable displacement axial piston pumps | | | | |
| Maximum flow | l/min | gpm | 2 x 263 | 2 x 69 |
| Pilot pump, type gear pump | | | | |
| Maximum flow | l/min | gpm | 18 | 4,8 |

PL4809D

| | | | | |
|--|-------|-----|---------|--------|
| Main pump, type 2 x variable displacement axial piston pumps | | | | |
| Maximum flow | l/min | gpm | 2 x 358 | 2 x 94 |
| Pilot pump, type gear pump | | | | |
| Maximum flow | l/min | gpm | 32 | 8,5 |

Hydraulic motors

Travel: Variable displacement axial piston motor with mechanical brake
Swing: Fixed displacement axial piston motor with mechanical brake

Cab

The Volvo Care Cab, with operator protective structure, provides safety along with more interior, leg and foot space. In work mode, the cab is hydraulically elevated by 496mm / 19.5" providing a wide field of vision to the entire job site, winch, boom and load block. Through the cab glass, transparent roof hatch and two-piece sliding door window, visibility is maximized. This improves operator confidence, comfort, safety and effectiveness. The deluxe seat features adjustable height, tilt, recline and forward-back settings as well as a retractable seat belt and selectable horizontal suspension which cushions the operator from vibrations.

Boom

The asymmetric boom gives the operator a clear view to the hook block at all heights as well as into the trench for safe, precise load placement. The long boom provides high hook height and reach allowing the machine to work further from the trench.

Winch

Planetary, high line pull winch delivers smooth lifting performance and precise control. The winch hydraulic motor has a multi-disc friction brake which is spring applied and hydraulically released.

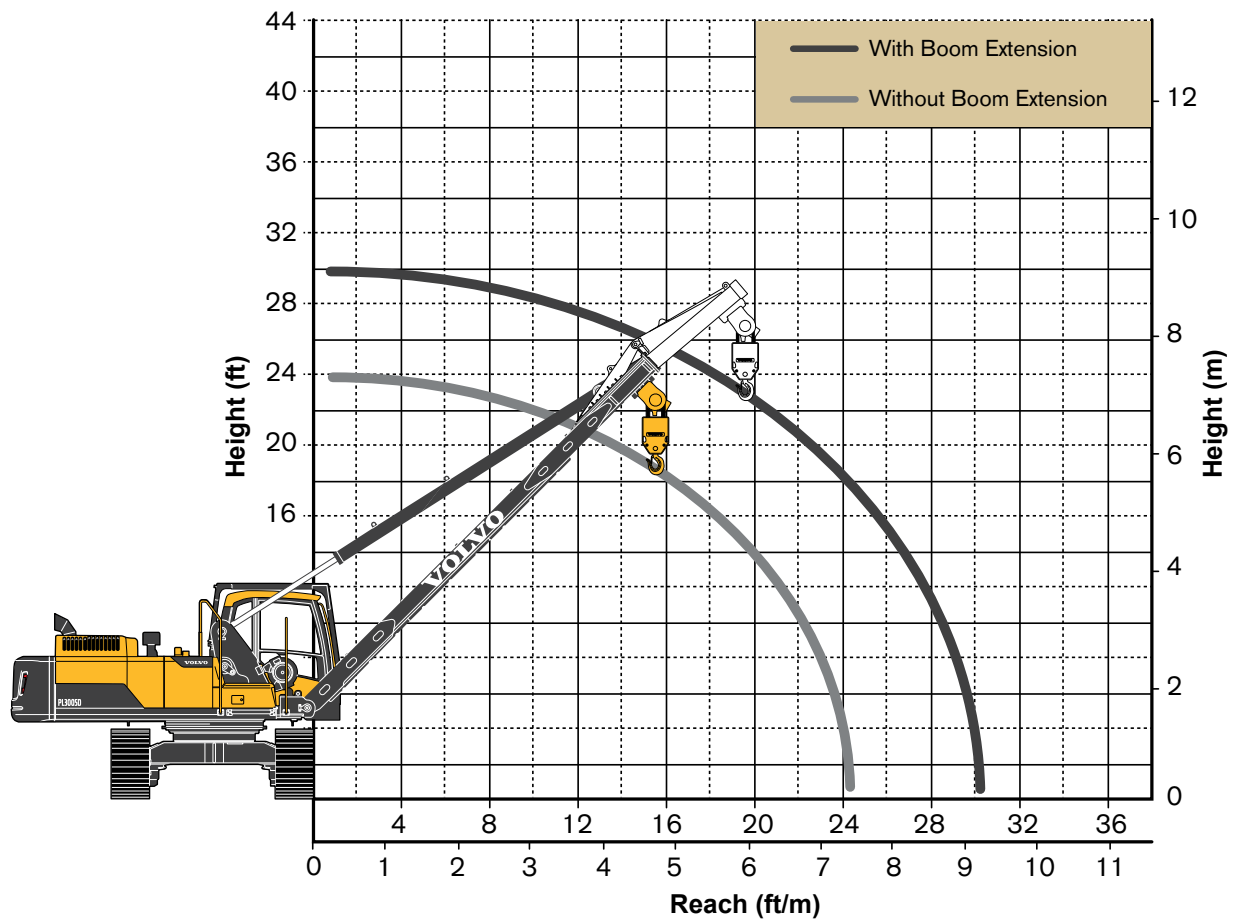
Load Management System

Operator confidence, effectiveness and safety are enhanced with Volvo's Load Management System. Volvo pipelayers utilize load, boom and superstructure-mounted sensors that allow onboard computers to monitor boom angle as well as cab orientation and inclination. The computer uses this information to compute and display actual loads and rated working loads in real-time through an in-cab monitor with audible warning systems. This allows the operator to maintain full control of the machine both on flat and level ground as well as on steep slopes throughout the 360 degree swing. The Load Management System utilizes boom-mounted load indicator lights for visual communication with ground staff and between adjacent machines during multiple lift operations.

* Machines designed for non-regulated market

Specifications

WORKING RANGE PL3005D

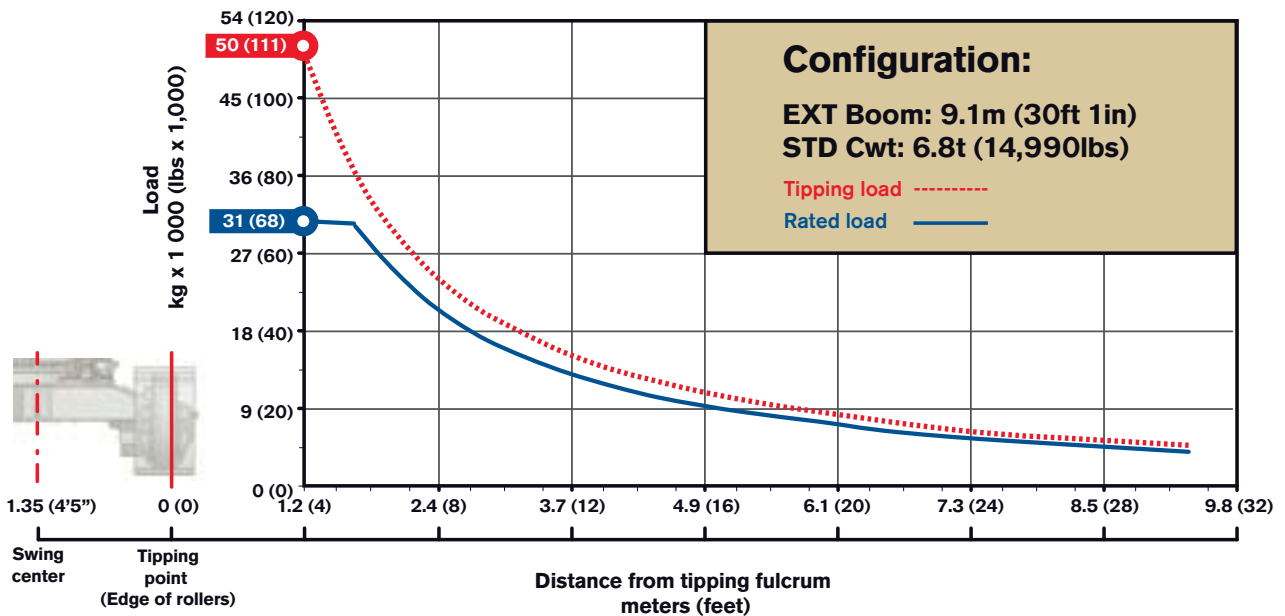
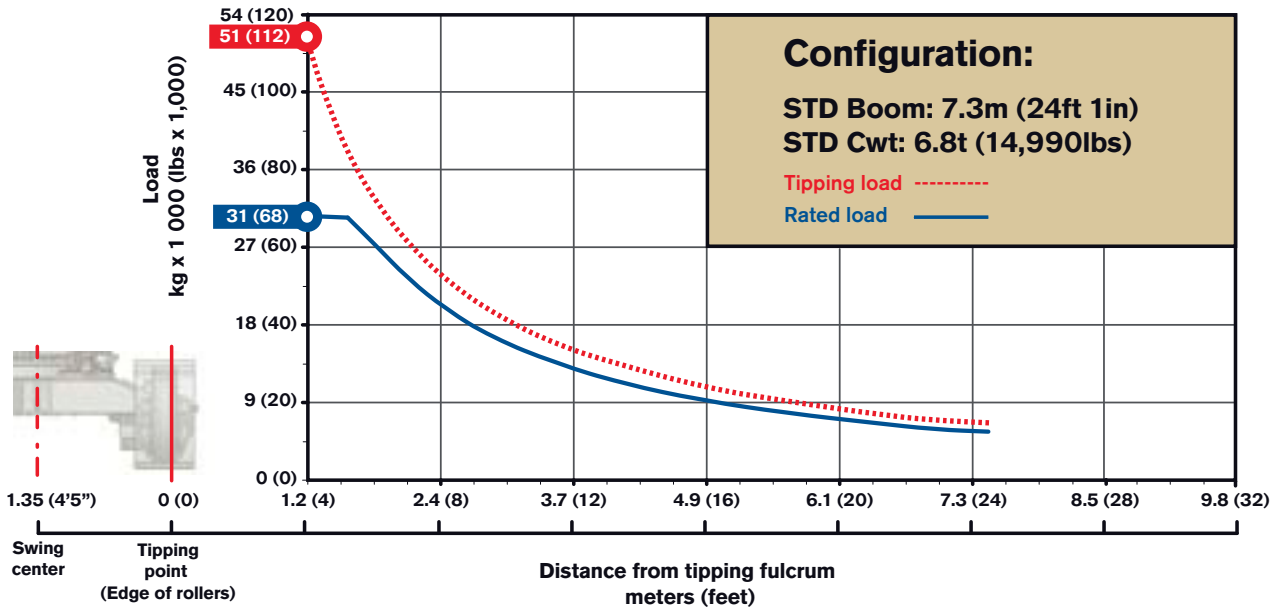


Footnotes PL3005D

Max tipping capacity per ISO 8813, SAE J743, and ASME B30.14. Rated capacity per ISO 8813 and ASME B30.14, lift capacity valid through 360 degree rotation

| | | | | |
|-----------------------------------|----|-------|--------|--------|
| Boom length | m | ft in | 7.3 | 24' 1" |
| with extension | m | ft in | 9,1 | 30' 1" |
| Rear counterweight | kg | lb | 6 800 | 14 990 |
| Track frame counterweights | kg | lb | -- | -- |
| Wire rope | mm | ft in | 16 | 5/8" |
| with minimum breaking strength of | kg | lb | 20 600 | 45 400 |
| Reeving on load block | | Parts | | 6 |

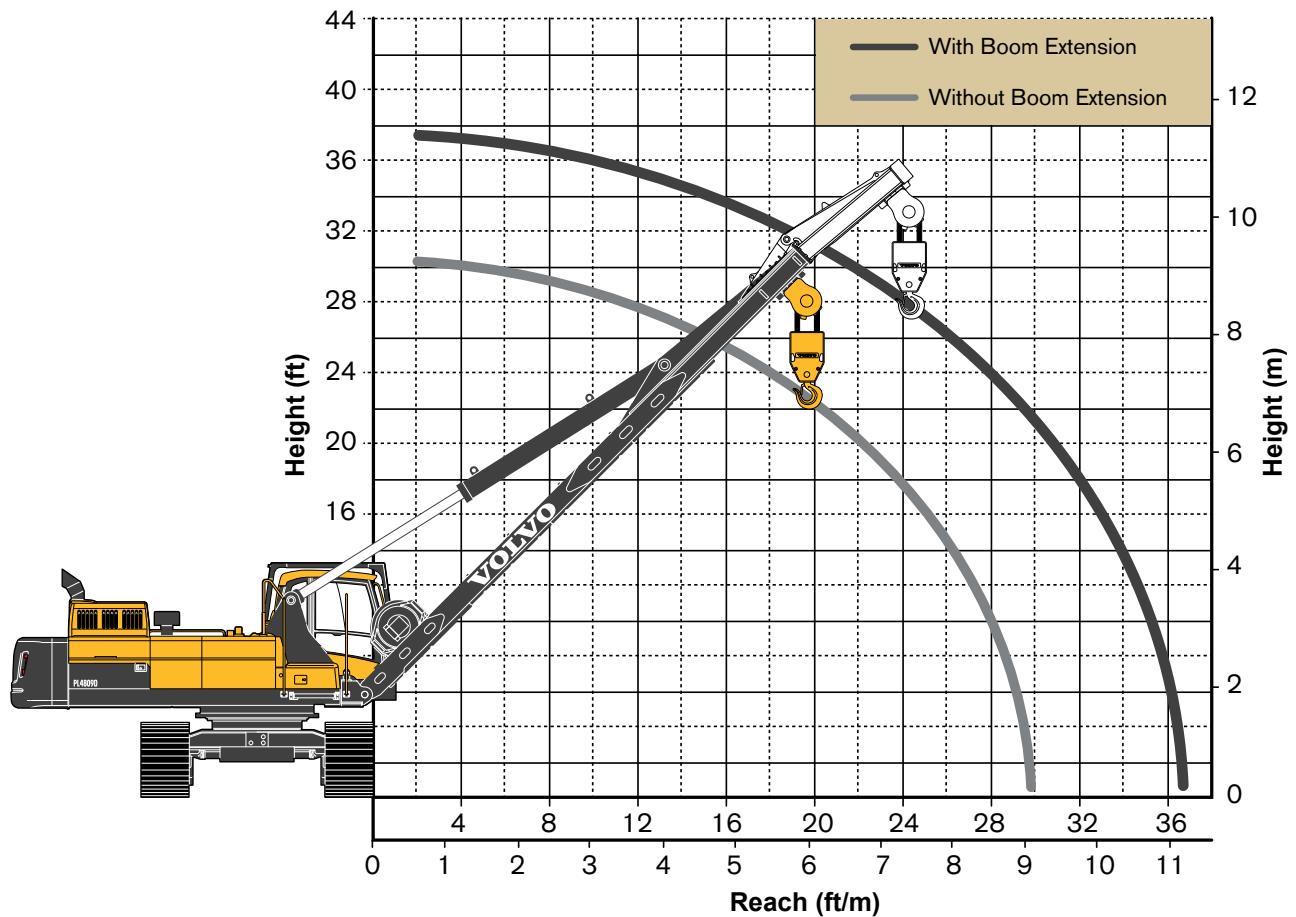
LOAD CHARTS WITH STANDARD CONFIGURATION PL3005D



* Note: Max tipping capacity per ISO 8813, SAE J743, and ASME B30.14. Rated capacity per ISO 8813 and ASME B30.14, lift capacity valid through 360 degree rotation.

Specifications

WORKING RANGE PL4809D

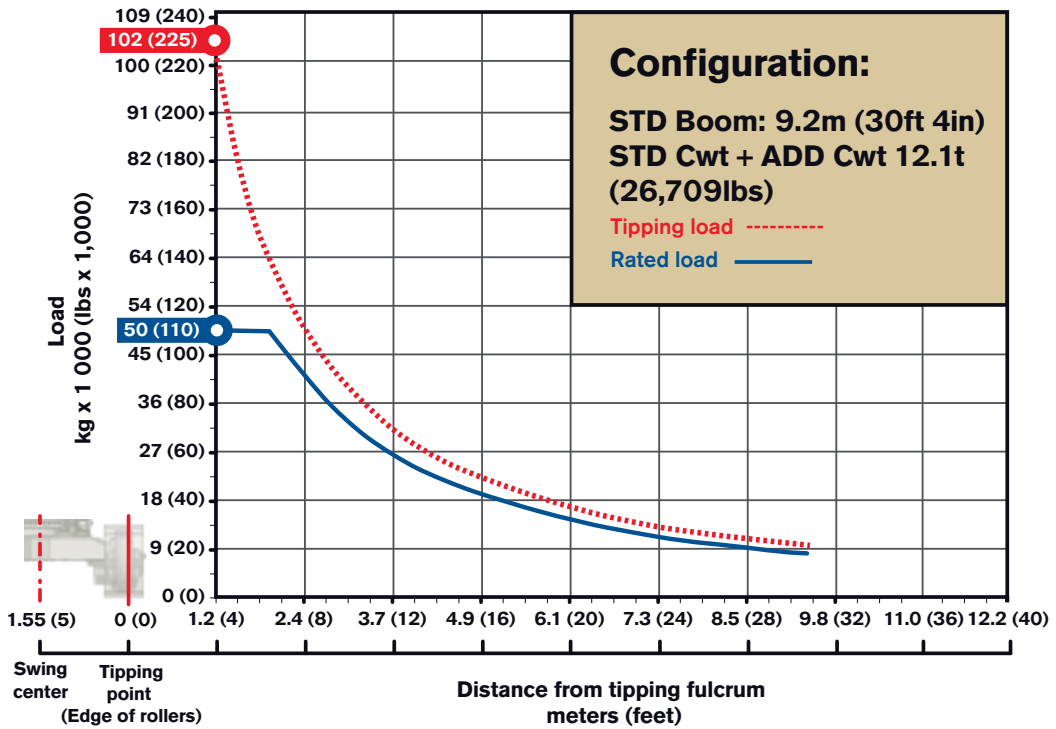
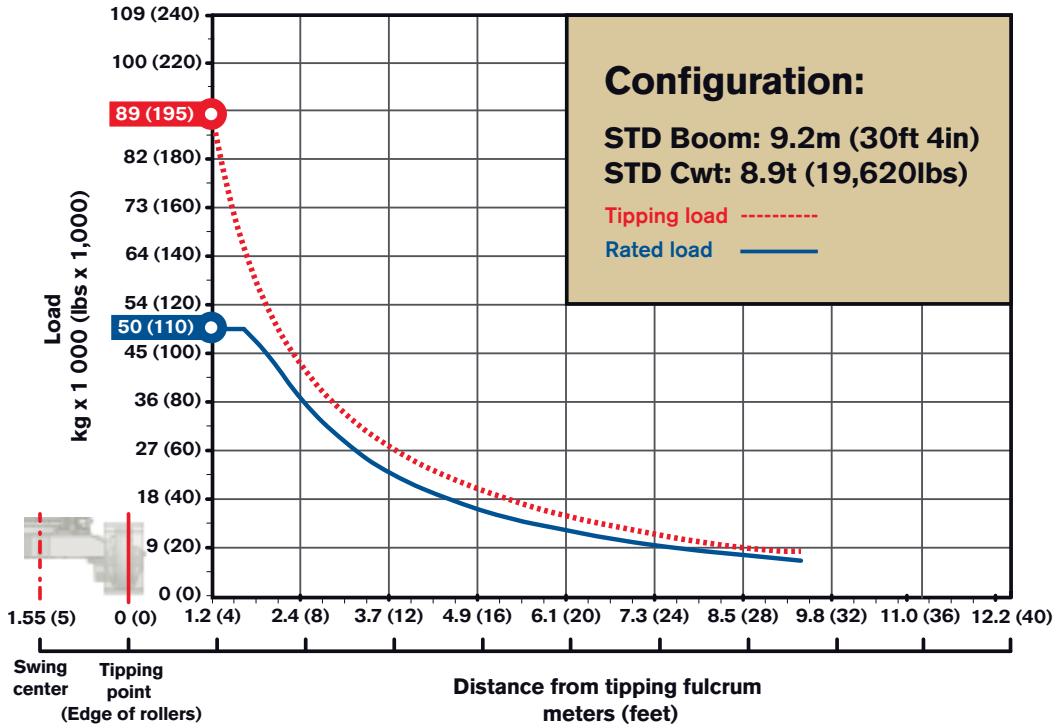


Footnotes PL4809D

Max tipping capacity per ISO 8813, SAE J743, and ASME B30.14. Rated capacity per ISO 8813 and ASME B30.14, lift capacity valid through 360 degree rotation

| | | | | |
|------------------------------------|----|-------|---------|-----------|
| Boom length | m | ft in | 9.2 | 30' 4" |
| with extension | m | ft in | 11.2 | 36' 11" |
| Rear counterweight | kg | lb | 8 900 | 19 620 |
| with additional rear counterweight | kg | lb | 12 115 | 26 709 |
| Track frame counterweights | kg | lb | 2 X 902 | 2 X 1 989 |
| Wire rope | mm | ft in | 22.2 | 7/8" |
| with minimum breaking strength of | kg | lb | 36 000 | 79 400 |
| Reeving on load block | | Parts | | 6 |

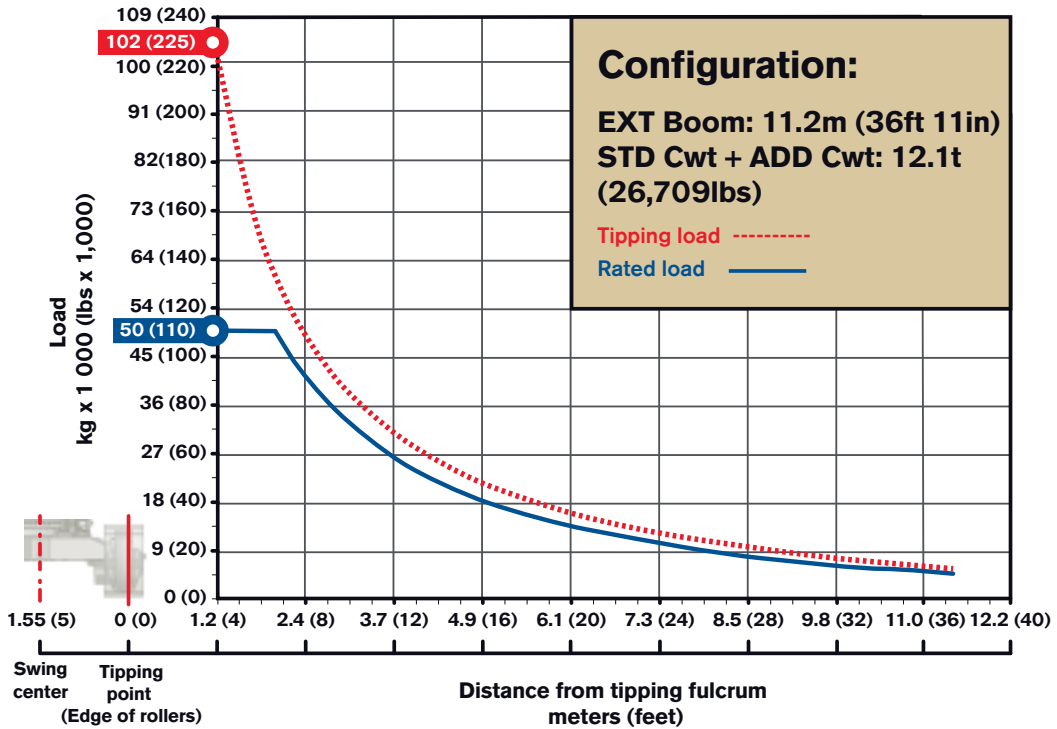
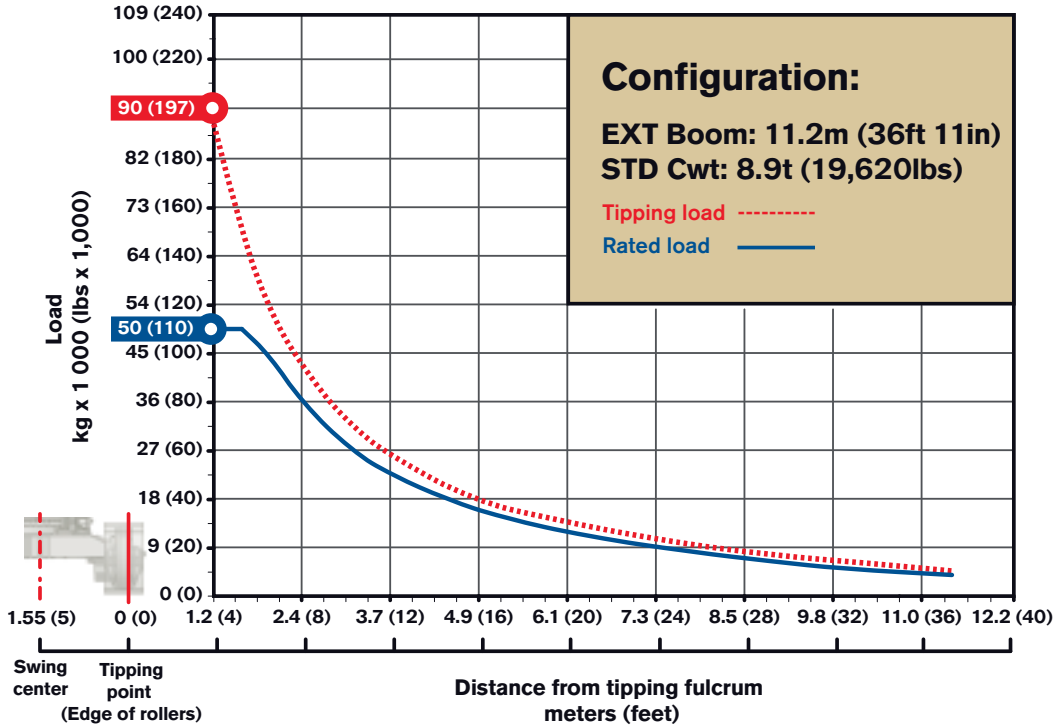
LOAD CHARTS WITH STANDARD CONFIGURATION PL4809D



* Note: Max tipping capacity per ISO 8813, SAE J743, and ASME B30.14. Rated capacity per ISO 8813 and ASME B30.14, lift capacity valid through 360 degree rotation.

Specifications

LOAD CHARTS WITH STANDARD CONFIGURATION PL4809D



* Note: Max tipping capacity per ISO 8813, SAE J743, and ASME B30.14. Rated capacity per ISO 8813 and ASME B30.14, lift capacity valid through 360 degree rotation.

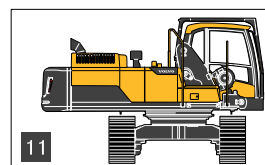
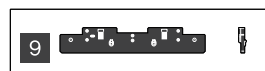
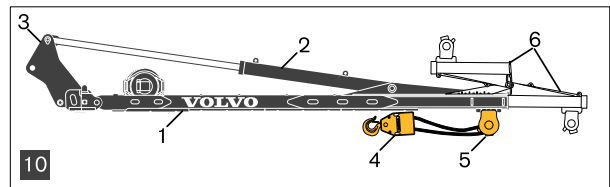
OPERATING WEIGHT AND GROUND PRESSURE

| Track shoe width | | With standard counterweight | | Ground pressure | | With additional rear counterweight | | Ground pressure | |
|---------------------------|-----|-----------------------------|---------|-----------------|------|------------------------------------|---------|-----------------|------|
| mm | in | kg | lb | kPa | psi | kg | lb | kPa | psi |
| With standard boom | | | | | | | | | |
| PL3005D* | | | | | | | | | |
| 600 | 24" | 35 330 | 77,890 | 66,9 | 9,7 | - | - | - | - |
| 750 | 30" | 36 015 | 79,400 | 54,5 | 7,9 | - | - | - | - |
| 800 | 32" | 36 240 | 79,895 | 51,4 | 7,5 | - | - | - | - |
| PL3005D | | | | | | | | | |
| 600 | 24" | 35 110 | 77,405 | 66,4 | 9,6 | - | - | - | - |
| 750 | 30" | 35 765 | 78,850 | 54,1 | 7,9 | - | - | - | - |
| 800 | 32" | 35 880 | 79,105 | 50,9 | 7,4 | - | - | - | - |
| PL4809D* | | | | | | | | | |
| 700 | 28" | 58 160 | 128,220 | 85,9 | 12,5 | 61 375 | 135 025 | 90,7 | 13,2 |
| 750 | 30" | 58 200 | 128,310 | 80,3 | 11,6 | 61 415 | 135 113 | 84,7 | 12,3 |
| 900 | 36" | 58 965 | 129,995 | 67,8 | 9,8 | 62 180 | 136 796 | 71,5 | 10,4 |
| 1 050 | 42" | 59 725 | 131,670 | 58,8 | 8,5 | 62 940 | 138 468 | 62,0 | 9,0 |
| PL4809D | | | | | | | | | |
| 700 | 28" | 58 160 | 128,220 | 85,9 | 12,5 | 61 375 | 135 025 | 90,7 | 13,2 |
| 750 | 30" | 58 200 | 128,310 | 80,3 | 11,6 | 61 415 | 135 113 | 84,7 | 12,3 |
| 900 | 36" | 58 965 | 129,995 | 67,8 | 9,8 | 62 180 | 136 796 | 71,5 | 10,4 |
| 1 050 | 42" | 59 725 | 131,670 | 58,8 | 8,5 | 62 940 | 138 468 | 62,0 | 9,0 |
| With extended boom | | | | | | | | | |
| PL3005D* | | | | | | | | | |
| 600 | 24" | 36 340 | 80,115 | 68,8 | 10,0 | - | - | - | - |
| 750 | 30" | 37 020 | 81,615 | 56,0 | 8,1 | - | - | - | - |
| 800 | 32" | 37 245 | 82,110 | 52,9 | 7,7 | - | - | - | - |
| PL3005D | | | | | | | | | |
| 600 | 24" | 36 135 | 79,665 | 68,4 | 9,9 | - | - | - | - |
| 750 | 30" | 36 790 | 81,110 | 55,7 | 8,1 | - | - | - | - |
| 800 | 32" | 36 905 | 81,365 | 52,4 | 7,6 | - | - | - | - |
| PL4809D* | | | | | | | | | |
| 700 | 28" | 59 765 | 131 483 | 88,3 | 12,8 | 62 980 | 138,840 | 93,0 | 13,5 |
| 750 | 30" | 59 805 | 131 571 | 82,5 | 12,0 | 63 020 | 138,935 | 86,9 | 12,6 |
| 900 | 36" | 60 565 | 133 243 | 69,6 | 10,1 | 63 780 | 140,610 | 73,3 | 10,6 |
| 1 050 | 42" | 61 325 | 134 915 | 60,4 | 8,8 | 64 540 | 142,285 | 63,6 | 9,2 |
| PL4809D | | | | | | | | | |
| 700 | 28" | 59 765 | 131 483 | 88,3 | 12,8 | 62 980 | 138,840 | 93,0 | 13,5 |
| 750 | 30" | 59 805 | 131 571 | 82,5 | 12,0 | 63 020 | 138,935 | 86,9 | 12,6 |
| 900 | 36" | 60 565 | 133 243 | 69,6 | 10,1 | 63 780 | 140,610 | 73,3 | 10,6 |
| 1 050 | 42" | 61 325 | 134 915 | 60,4 | 8,8 | 64 540 | 142,285 | 63,6 | 9,2 |

* Machines designed for non-regulated markets

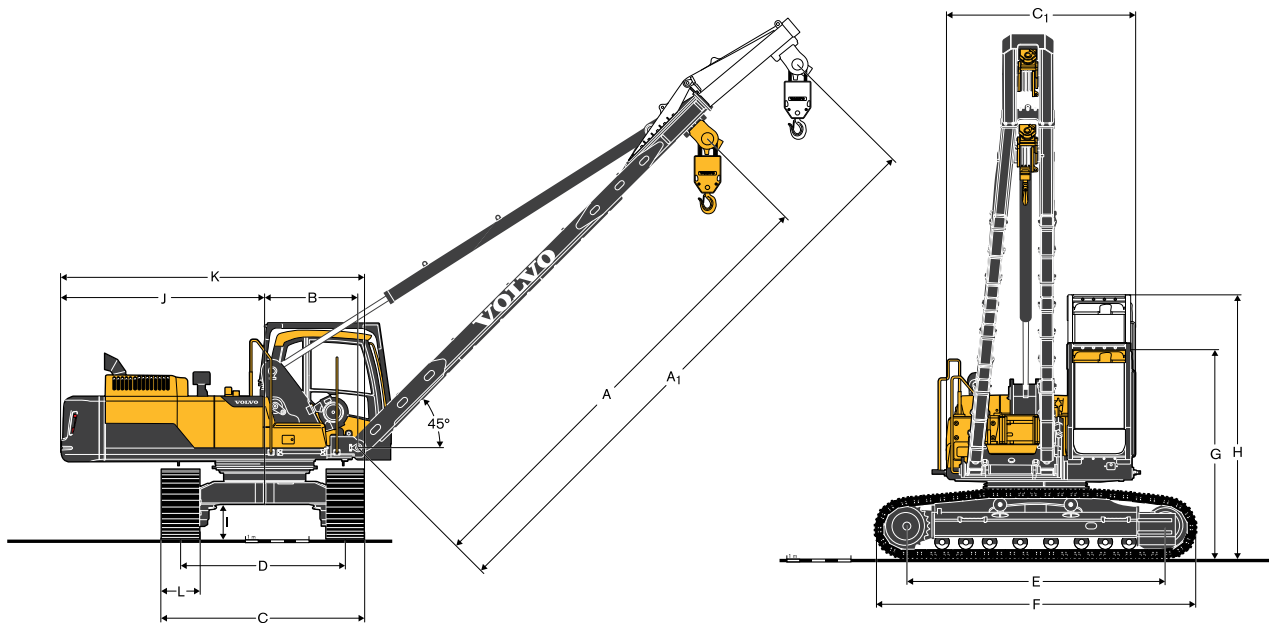
| Other weights | PL3005D | | PL4809D | |
|--|---------|--------|---------|------------|
| | kg | lb | kg | lb |
| 1 Boom with winch (with rope stored) | - | - | 7 388 | 16 287 |
| Boom | 2 740 | 6 041 | - | - |
| 2 Boom cylinder (dry) | 600 | 1 323 | 1 425 | 3 142 |
| 3 Adaptor with winch (with rope stored) | 2 460 | 5 423 | - | - |
| Adaptor | - | - | 2 981 | 6 572 |
| 4 Hook block | 270 | 595 | 520 | 1 146 |
| 5 Flag block | 370 | 816 | 486 | 1 071 |
| 6 Boom extension | 1 030 | 2 271 | 1 470 | 3 241 |
| 7 Counterweight, rear | 6 800 | 14 991 | 8 900 | 19 621 |
| 8 Extra counterweight | - | - | 3 215 | 7 088 |
| 9 Counterweight, Track frame | - | - | 2 X 902 | 2 X 1,9889 |
| 10 Boom assembly (1-5) with boom extension (1-6) | 6 440 | 14 198 | 12 800 | 28 218 |
| 11 Standard equipped machine (minus 1-5)* | 28 890 | 63 691 | - | - |
| Standard equipped machine (minus 1-5 & 7 & 9)* | - | - | 29 327 | 64 655 |

* Machines designed for non-regulated markets



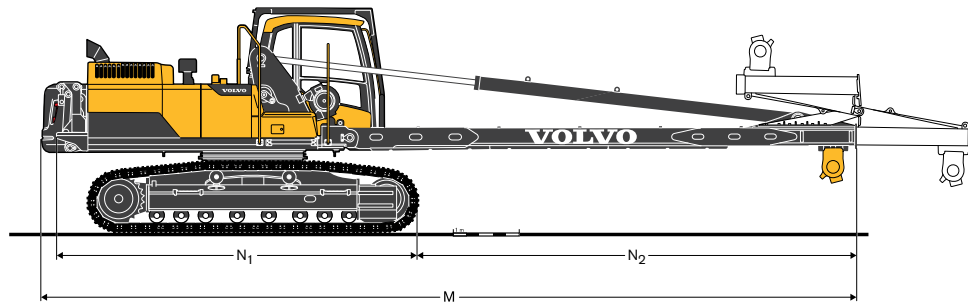
Specifications

DIMENSIONS

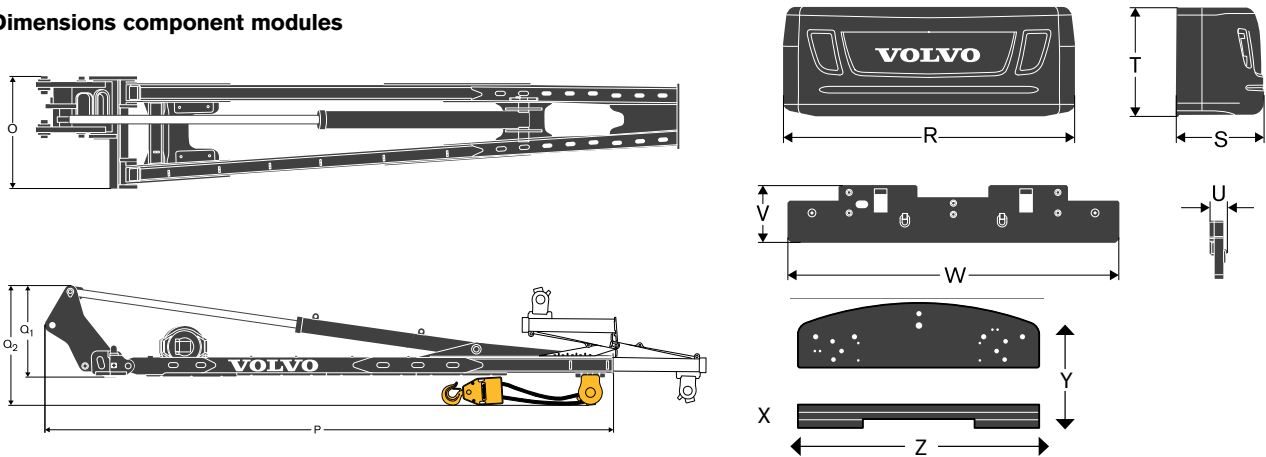


| Description | Unit | PL3005D | | PL4809D | |
|---|----------|---------|--------|---------|---------|
| A Boom length | mm ft in | 7 430 | 24' 4" | 9 250 | 30' 4" |
| A ₁ Boom length (boom extension) | mm ft in | 9 240 | 30' 4" | 11 250 | 36' 11" |
| B Swing center - boom mount pin | mm ft in | 1 470 | 4'10" | 1 680 | 5'6" |
| C Overall width (600mm; 24" shoes) | mm ft in | 3 190 | 10'6" | - | - |
| Overall width (750mm; 30" shoes, tracks extended) | mm ft in | - | - | 3 640 | 11'11" |
| Overall width (750mm; 30" shoes, tracks retracted) | mm ft in | - | - | 3 140 | 10'4" |
| C ₁ Overall width upper structure; bolted items removed (handrail, steps, catwalk) | mm ft in | 2 910 | 9' 7" | 3 010 | 9'10" |
| D Track gauge (PL4809D Extended) | mm ft in | 2 590 | 8'6" | 2 890 | 9'6" |
| D ₁ Track gauge (PL4809D Retracted) | mm ft in | - | - | 2 390 | 7' 10" |
| E Tumbler length | mm ft in | 4 020 | 13' 2" | 4 370 | 14'4" |
| F Track length | mm ft in | 5 040 | 16' 6" | 5 530 | 18' 2" |
| G Overall height, Cab in lower position with ROPS | mm ft in | 3 390 | 11'1" | 3 610 | 11' 10" |
| H Overall height, Cab in upper position with ROPS | mm ft in | 3 880 | 12'9" | 4 110 | 13' 6" |
| I Minimum ground clearance | mm ft in | 580 | 1' 11" | 600 | 2' 0" |
| J Tail swing radius | mm ft in | 3 190 | 10'6" | 3 880 | 12'9" |
| K Maximum base machine width, across undercarriage (with 600mm / 24" shoes) | mm ft in | 4 780 | 15' 8" | - | - |
| Maximum base machine width, across undercarriage (with 750mm / 30" shoes) | mm ft in | - | - | 5 700 | 18' 8" |
| L Track shoe | mm ft in | 600 | 24" | 700 | 28" |
| L ₁ Track shoe | mm ft in | 750 | 30" | 750 | 30" |
| L ₂ Track shoe | mm ft in | 800 | 32" | 900 | 36" |
| L ₃ Track shoe | mm ft in | - | - | 1 050 | 42" |

Dimensions base machine



Dimensions component modules



| Description | Unit | PL3005D | PL4809D |
|---|----------|---------------|----------------|
| M ₁ Total transport length (boom extension stored/off) | mm ft in | 12 340 40'6" | 15 260 50'1" |
| M ₂ Total transport length (boom extension extended) | mm ft in | 14 220 46'8" | 17 250 56'7" |
| N ₁ Counterweight bracket - front of track | mm ft in | 5 420 17' 10" | 6 210 20' 5" |
| N ₂ Front of track to end of boom (no extension) | mm ft in | 6 620 21' 9" | 8 660 28' 5" |
| N ₃ Front of track to end of boom (with extension) | mm ft in | 8 500 27' 13" | 10 650 34' 11" |
| O Width boom assembly | mm ft in | 1 580 5' 2" | 1 960 6' 5" |
| P ₁ Length boom assembly (boom extension stored/off) | mm ft in | 9 190 30' 2" | 11 360 37' 3" |
| P ₂ Length boom assembly (boom extension extended) | mm ft in | 11 070 36' 4" | 13 350 43' 10" |
| Q ₁ Height boom assembly (excluding flag block) | mm ft in | 1 530 5' 0" | 1 810 5' 11" |
| Q ₂ Height boom assembly (boom extension stored/off) | mm ft in | 2 190 7' 2" | 2 380 7' 10" |
| Height boom assembly (boom extension extended) | mm ft in | 2 370 7' 9" | 2 510 8' 3" |
| R Width rear counterweight | mm ft in | - - | 2 990 9'10" |
| S Length rear counterweight | mm ft in | - - | 920 3'0" |
| T Height rear counterweight | mm ft in | - - | 1 150 3'9" |
| U Thickness track frame counterweight | mm ft in | - - | 140 6" |
| V Height track frame counterweight | mm ft in | - - | 590 1'11" |
| W Length track frame counterweight | mm ft in | - - | 3 325 10'10" |
| X Thickness additional rear counterweight | mm ft in | - - | 270 11" |
| Y Length additional rear counterweight | mm ft in | - - | 750 2' 5" |
| Z Width additional rear counterweight | mm ft in | - - | 2 800 9' 2" |

Overall transport width

PL3005D

| Unit | Track shoe width | Machine width |
|----------|------------------|---------------|
| mm ft in | 600 24" | 3 190 10'8" |
| mm ft in | 750 30" | 3 340 10'11" |
| mm ft in | 800 32" | 3 390 11'1" |

PL4809D

| Unit | Track shoe width | Machine width retracted | Machine width extended |
|----------|------------------|-------------------------|------------------------|
| mm ft in | 700 28" | 3 090 10'2" | 3 590 11'9" |
| mm ft in | 750 30" | 3 140 10'4" | 3 640 11'11" |
| mm ft in | 900 36" | 3 290 10'10" | 3 790 12'5" |
| mm ft in | 1 050 42" | - - | 3 940 12'11" |

Equipment

STANDARD EQUIPMENT

| | PL3005D* | PL3005D | PL4809D* | PL4809D |
|--|----------|---------|----------|---------|
| * Machines designed for non-regulated markets | | | | |
| Engine | | | | |
| Turbocharged, 4 stroke diesel engine with water cooling, direct injection and charged air cooler (that meets Tier 3 / Stage IIIA requirements) | • | • | • | • |
| (that meets Tier 4i EU / Stage IIIB requirements) | • | • | • | • |
| Air filter with indicator | • | • | • | • |
| Air intake heater | • | • | • | • |
| Electric engine shut-off | • | • | • | • |
| Fuel filter and water separator | • | • | • | • |
| Cyclone pre-cleaner | • | • | • | • |
| Alternator, 80 A | • | • | • | • |
| Electric/Electronic control system | | | | |
| Anti-two block device | • | • | • | • |
| Contronics: | | | | |
| Advanced mode control system | • | • | • | • |
| Self-diagnostic system | • | • | • | • |
| ECO mode fuel saving technology | • | • | • | • |
| CareTrack | • | • | • | • |
| 3year-Caretrack subscription | • | • | • | • |
| Machine status indication | • | • | • | • |
| Engine speed sensing power control | • | • | • | • |
| Automatic idling system | • | • | • | • |
| One-touch power boost | • | • | • | • |
| Safety stop/start function | • | • | • | • |
| Load management system (LMS) | • | • | • | • |
| Adjustable LCD color monitor | • | • | • | • |
| Master electrical disconnect switch | • | • | • | • |
| Engine restart prevention circuit | • | • | • | • |
| High-capacity halogen lights: | • | • | • | • |
| Travel alarm | • | • | • | • |
| Batteries, 2 x 12 V / 200 Ah | • | • | • | • |
| Start motor, 24 V / 5,5 kW | • | • | • | • |
| Start motor, 24 V / 7 kW | • | • | • | • |
| Start motor, 24 V / 5,5 kW (PL3005D) | • | • | • | • |
| Start motor, 24 V / 7 kW (PL4809D) | • | • | • | • |
| Hydraulic system | | | | |
| Hydraulic digging kit in base machine | • | • | • | • |
| Separate and combined pump flow switch | • | • | • | • |
| 360 degree slew with hydro-mechanical slew lock system | • | • | • | • |
| Swing anti-rebound valves | • | • | • | • |
| Multi-stage filtering system | • | • | • | • |
| Boom cylinder | • | • | • | • |
| Cylinder contamination seals | • | • | • | • |
| Auxiliary hydraulic valve | • | • | • | • |
| Automatic two-speed travel motors | • | • | • | • |
| User Adjustable Variable speed travel motors | • | • | • | • |
| Long life hydraulic oil, ISO VG 46 | • | • | • | • |
| Superstructure | | | | |
| Access way with handrail | • | • | • | • |
| Counterweight 6 800 kg (14,990 lb) | • | • | • | • |
| Hydraulically removable counterweight 8 900 kg (19,620 lb) | • | • | • | • |
| Tool storage area | • | • | • | • |
| Service walkway with anti-slip grating | • | • | • | • |
| Undercover (4.5 mm) | • | • | • | • |
| Cab and interior | | | | |
| 4 Bar cab riser | • | • | • | • |
| Fabric seat with heater | • | • | • | • |
| Control joysticks with 4 switches each | • | • | • | • |
| Travel pedals with hand levers | • | • | • | • |
| Straight travel pedal | • | • | • | • |
| Heater & air-conditioner, automatic | • | • | • | • |
| Adjustable operator seat and joystick control console | • | • | • | • |
| Switchable winch control joystick | • | • | • | • |

| | PL3005D* | PL3005D | PL4809D* | PL4809D |
|--|----------|---------|----------|---------|
| * Machines designed for non-regulated markets | | | | |
| Cab and interior | | | | |
| Hydraulic safety lock lever | • | • | • | • |
| AM/FM stereo with CD player and MP3 input: | | • | | • |
| AM/FM stereo with CD player and MP3 and USB input: | • | | • | |
| includes antenna in glass | • | • | • | • |
| Cab, all-weather sound suppressed, includes: | • | • | • | • |
| Cup holders | • | • | • | • |
| Door locks | • | • | • | • |
| Floor mat | • | • | • | • |
| Horn | • | • | • | • |
| Large storage area | • | • | • | • |
| Pull-up type front window | • | • | • | • |
| Removable lower windshield | • | • | • | • |
| Seat belt 3" | • | • | • | • |
| Safety glass, light tinted | • | • | • | • |
| Windshield wipers with washer and intermittent feature (Front and right hand side) | • | • | • | • |
| Anti-vandalism kit assembly preparation | • | • | • | • |
| Master key | • | • | • | • |
| Fixed hatch | • | • | • | • |
| Rear and side view camera | • | • | • | • |
| Four-bar cab riser-mounted, ROPS certified (ISO 3471 & EN474-1), factory installation only | • | • | • | • |
| 4 bar cab riser-mounted | | | | |
| Undercarriage | | | | |
| Hydraulic track adjusters | • | • | • | • |
| Greased and sealed track link | • | • | • | • |
| Hydraulically retractable track frame | • | • | • | • |
| Full track guard | • | • | • | • |
| Undercover (10 mm) | • | • | • | • |
| Pulling eyes | • | • | • | • |
| Track frame counterweights 2 x 902 kg (2 X 1,984 lb) | | | • | • |
| Track shoes | | | | |
| 600mm, 24" Track shoes, single grousers | • | • | | |
| 750mm, 30" Track shoes, single grousers | | | • | • |
| PL booms | | | | |
| Prepared for boom extension | • | • | • | • |
| 7,3m (24' 1") | • | • | | |
| 9,2m (30' 4") | | | • | • |
| Winch | • | • | • | • |
| Flag block | • | • | • | • |
| Hook block | • | • | • | • |
| Wire rope, D16 | • | • | • | • |
| Wire rope, D22 | | | • | • |
| Service | | | | |
| Tool kit, daily maintenance | • | • | • | • |

OPTIONAL EQUIPMENT

| | PL3005D* | PL3005D | PL4809D* | PL4809D |
|---|----------|---------|----------|---------|
| * Machines designed for non-regulated markets | | | | |
| Engine | | | | |
| Block heater: 240V | • | | • | |
| 120V, 240V | | • | | • |
| Diesel coolant heater, 10 kW, programmable | • | • | • | • |
| Water separator with heater | • | • | • | • |
| Extra water separator | • | | • | |
| Fuel filler pump: 35 l/min, with automatic shut-off | • | | • | |
| 50 l/min, with automatic shut-off | | • | • | • |
| Oil bath pre-cleaner | • | • | • | • |

OPTIONAL EQUIPMENT

| | PL3005D* | PL3005D | PL4809D* | PL4809D |
|--|----------|---------|----------|---------|
| * Machines designed for non-regulated markets. | | | | |
| Electric | | | | |
| Extra lamps: | • | • | • | • |
| Cab-mounted 2 | • | • | • | • |
| Upper structure-mounted 1 | • | • | • | • |
| Boom lights for pipelayer boom | • | • | • | • |
| Anti-theft, code lock system | • | • | • | • |
| Rotating warning beacon | • | • | • | • |
| Hydraulic system | | | | |
| Hydraulic piping for | | | | |
| Hammer & shear 2 pump flow & Slope & rotator & Quick coupler | • | • | | |
| Hammer & shear 2 pump flow | | | • | • |
| (max. flow 716lpm, double acting pressure 360kgf/cm ²) | | | | |
| Long life hydraulic oil, ISO VG 32 | • | • | • | • |
| Long life hydraulic oil, ISO VG 68 | • | • | • | • |
| Hydraulic oil, biodegradable 46 | • | • | • | • |
| Superstructure | | | | |
| Additional counterweight; 3,215 kg (7,088 lbs) | | | • | • |
| Cab and interior | | | | |
| Fabric seat with heater and mech. Suspension | • | • | • | • |
| Fabric seat with heater and air suspension | • | • | • | • |
| Control joystick with proportional control | • | • | • | • |
| Ashtray and lighter | • | • | • | • |
| Sun shield | • | • | • | • |
| Rain shield | • | • | • | • |

| | PL3005D* | PL3005D | PL4809D* | PL4809D |
|---|----------|---------|----------|---------|
| * Machines designed for non-regulated markets. | | | | |
| Track shoes | | | | |
| Single grousers: | | | | |
| 750mm, 30" | • | • | | |
| 900mm, 36" | | | • | • |
| 1050mm, 42" | | | • | • |
| Triple grousers: | | | | |
| 700mm, 28" | | | • | • |
| 800mm, 32" | • | • | | |
| 900mm, 36" | | | • | • |
| PL Boom | | | | |
| Boom extension: 1,8m (6' 0") | • | • | | |
| Boom extension: 2,0 m (6' 7") | | | • | • |
| Boom pad | • | • | • | • |
| Digging equipment | | | | |
| Digging kit : | | | | |
| Boom 6,2m (20'4"), arm 3,05m (10'0") with aux hydraulic (Hose rupture valve, hammer & shear piping, quick coupler piping, slope rotator piping) | • | • | | |
| Boom 7,0m (23'0"), arm 3,35m (11'0") with aux hydraulic (Hose rupture valve, hammer & shear piping) | | | • | • |
| Others | | | | |
| Siberian option package for digging equipment | • | | • | |
| Siberian option package for pipelayer | • | | | |

SELECTION OF VOLVO OPTIONAL EQUIPMENT

Boom extension



Boom pad



Digging Kit



Auxiliary hydraulic circuit for attachments



Boom Lights



Oil bath pre-cleaner



Not all products are available in all markets. Under our policy of continuous improvement, we reserve the right to change specifications and design without prior notice. The illustrations do not necessarily show the standard version of the machine.



VOLVO

Volvo Construction Equipment

www.volvoce.com