

V O L V O



Volvo Wheel Loader 11,0-13,6 t / 24.250-29.983 lb 166 hp(met) / 164 hp(imp)

L60H

Volvo Construction Equipment

L60H

Leave the heavy-duty work for the L60H, designed to do more, be more comfortable and help you increase your productivity.



Designed to do more

Hard work has never felt so easy. H-Series wheel loaders are built with an industry-leading, strong frame, which, combined with the ideally-matched genuine Volvo drivetrain, achieves long-lasting performance. And with the help of a range of smart apps you can boost the efficiency of your operation from the comfort of the cab.



Loaded with versatility

- Torque Parallel linkage
- Volvo attachment bracket
- Range of purpose-built attachments
- Rehandling bucket
- 3rd and 4th hydraulic functions



Keep it moving

- Quick hydraulic oil fill thanks to new mounted nipple
- Improved cooling capacity
- Strong frame and central hinge
- Optional delayed engine shutdown



Safety as standard

- Anti-slip steps and strategically placed handrails
- Orange three-point seatbelt
- Redesigned side mirrors
- Rear-view camera



Strong and stable

- Optimized loading unit weight, heavy-duty counterweight for greater stability
- 5,5% higher tipping load
- Standard electro-servo controls
- Bucket leveling function



Increased productivity

- Optional lock-up converter
- Top speed of 50km/h (31mph) with lock-up feature
- Rimpull control
- Smart Control
- Smooth Control
- Eco pedal



Greater access

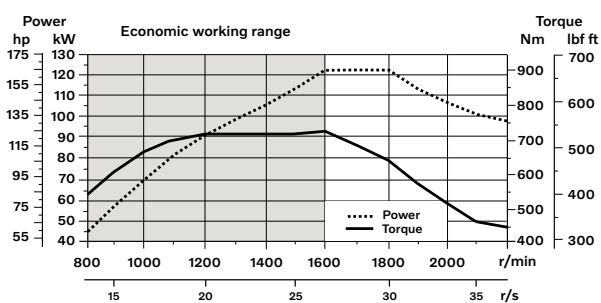
- Cooler installation slides out for easier cleaning
- Repositioned fill spouts for transmission and engine oil
- Ground-level access to service points
- Electronically-operated engine hood

Volvo L60H in detail

Engine

6-cylinder, 6 liters (1,6 gal) inline turbocharged diesel engine with an advanced fuel injection system with the common rail. Fuel is distributed under high pressure from a high-pressure accumulator, the rail. One belt driven high pressure pump deliver the fuel to the rail and then further on via high-pressure pipes to the electronically operated fuel injectors. Engine meets Tier 3 /Stage IIIA emission legislation.

Engine	Volvo	D6E
Max. power at	r/min (r/s)	1.600 - 1.800 (26,6 - 28,3)
ISO 14396 gross	kW (hp)	122 (164)
ISO 9249, SAE J1349 net	kW (hp)	122 (164)
Max. torque at	r/min (r/s)	1.600 (26,6)
ISO 14396 gross	Nm (ft lbf)	730 (538)
ISO 9249, SAE J1349 net	Nm (ft lbf)	730 (538)
Economic working range	r/min (r/s)	1.100 - 1.600 (18,3 - 26,7)
Displacement	l (in ³)	5,7 (348)



Electrical system

Contronic electrical system with central warning light and buzzer for following functions: - Serious engine fault, Low steering system pressure, Over speed warning engine, Interruption in communication (computer fault), Central warning light and buzzer with the gear engaged for the following functions: Low engine oil pressure, High engine oil temperature, High charge air temperature, Low coolant level, High coolant temperature, High crank case pressure, Low transmission oil pressure, High transmission oil temperature, Low brake pressure, Engaged parking brake, Fault on brake charging, Low hydraulic oil level, High hydraulic oil temperature, Overspeeding in engaged gear, High brake cooling oil temperature front and rear axles, etc.

Batteries	V	2 x 12
Battery capacity	Ah	2 x 110
Cold cranking capacity, approx	A	680
Alternator rating	W/A	3.135/80
Starter motor output	kW	5,5

Brake system

Service brake: Volvo dual-circuit system with outboard mounted, hydraulically operated, fully sealed and circulating oil cooled wet disc brakes. Four operator selectable transmission disengagement settings while braking.

Parking brake: Dry disc brake mounted on the transmission output shaft. Applied by spring force, electro-hydraulically released with a switch on the instrument panel.

Secondary brake: Dual brake circuits with rechargeable accumulators.

Standard: The brake system complies with the requirements of ISO 3450, 71/320/EEC

Number of brake discs per wheel		1
Accumulators	l (gal)	3 x 0,5 (3 x 0,13)
Accumulators for parking brake	l (gal)	1 x 0,5 (1 x 0,13)

Lift Arm System

Torque parallel linkage (TP-linkage) with high breakout torque and parallel lift-arm action.

Lift cylinders		2
Cylinder bore	mm (in)	110 (4,3)
Piston rod diameter	mm (in)	70 (2,8)
Stroke	mm (in)	665 (26,2)
Tilt cylinder		1
Cylinder bore	mm (in)	150 (5,9)
Piston rod diameter	mm (in)	80 (3,1)
Stroke	mm (in)	444 (17,5)

Steering System

System supply: The steering system has priority feed from a load-sensing axial piston pump with variable displacement.

Steering cylinders: Two double-acting cylinders.

Steering cylinders		2
Cylinder bore	mm (in)	70 (2,8)
Rod diameter	mm (in)	45 (1,8)
Stroke	mm (in)	386 (15,2)
Working pressure	MPa (bar)	21 (210)
Maximum flow	l/min (gal/min)	60 (15,9)
Maximum articulation	± °	40

Cab

Instrumentation: All important information is centrally located in the operator's field of vision. Display for Contronic monitoring system.

Heater and defroster: Heater coil with filtered fresh air and fan with auto and 11 manual speed settings. Defroster vents for all window areas.

Operator's seat: Operator's seat with adjustable air suspension and retractable seatbelt. The seat is mounted on a bracket on the rear cab wall and floor. The forces from the retractable seatbelt are absorbed by the seat rails.

Standards: The cab is tested and approved according to ROPS (ISO 3471), FOPS (ISO 3449). The cab meets with requirements according to ISO 6055 (Operator overhead protection - Industrial trucks) and SAE J386 (Operator Restraint System).

Emergency exit: Use emergency hammer to break window

Ventilation	m ³ /min (yd ³ /min)	9 (11,8)
Heating capacity	kW	16
Air conditioning (optional)	kW	7,5

Sound Level

Sound pressure level in cab according to ISO 6396		
L _{pA}	dB	68
External sound level according to ISO 6395 and EU Noise Directive 2000/14/EC		
L _{WA}	dB	105

Service Refill

Service accessibility: Large, electrically operated easy-to-open hood covering whole engine compartment. Fluid filters and component breather air filters are located from ground level access and promote long service intervals. Machine contronics have possibility to monitor, log and analyze data to facilitate troubleshooting. A quick-fit adapter on the hydraulic tank provides faster hydraulic oil fill.

Fuel tank	l (gal)	222 (58,6)
Engine coolant	l (gal)	30 (7,9)
Hydraulic oil tank	l (gal)	90 (23,8)
Transmission oil (non lock-up)	l (gal)	21 (5,5)
Transmission oil (lock-up)	l (gal)	22 (5,8)
Engine oil	l (gal)	20 (5,2)
Axle oil front	l (gal)	25 (6,6)
Axle oil rear	l (gal)	25 (6,6)

Hydraulic system

Closed center load sensing hydraulic system with non pressurised hydraulic tank and pilot operated control valves.

System supply: Variable displacement axial piston pump supply the hydraulic system.

Valves: The central valve distributes pressure and flow out to the cooling fan, steering, brake, pilot and hydraulic system. Steering system gets priority over others.

Lift function: The valve has four positions; raise, hold, lower and float position. Automatic boom kickout position can be set to any position between maximum reach and full lifting height.

Tilt function: The valve has three functions; rollback, hold and dump. Automatic tilt out/tilt in can be adjusted to the desired bucket angle.

Cylinders: Double-acting cylinders for all functions.

Filter: Full flow filtration through 10 micron (absolute) filter cartridge.

Working pressure maximum, pump 2 for steering-, brake-, pilot- and working hydraulic system	MPa (bar)	26 (260)
Flow	l/min (gal/min)	145 (38,3)
at	MPa (bar)	10 (100)
engine speed	r/min (r/s)	1.900 (31,7)
Working pressure maximum, pump 3 for brake- and cooling fan system	MPa (bar)	21 (210)
Flow	l/min (gal/min)	33 (8,7)
at	MPa (bar)	10 (100)
engine speed	r/min (r/s)	1.900 (31,7)
Pilot system, working pressure	MPa (bar)	3,5 (35)
Lift	s	5,4
Tilt	s	1,9
Lower, empty	s	2,7
Total cycle time	s	10

Drivetrain

Torque converter: Single-stage

Transmission: Volvo countershaft transmission with single lever control. Fast and smooth shifting of gears with Pulse Width Modulation (PWM) valve.

Transmission: Volvo Automatic Power Shift (APS) gear shifting system with fully automatic shifting 1-4 and mode selector with 4 different gear shifting programs, including AUTO mode. Also equipped with Rimpull control to avoid wheel spin and optimize bucket filling.

Axles: Volvo fully floating axle shafts with planetary hub reductions and cast steel axle housing. Fixed front axle and oscillating rear axle. 100% differential lock on the front axle.

Transmission	Volvo	HTE 125C Non Lock-up / HTL 125 Lock-up
Torque multiplication, stall ratio		2,42:1 Non Lock-up / 2,59:1 Lock-up
Maximum speed		
1st gear	km/h (mi/h)	Converter 7,5 / Lock-up 7,5 (Converter 4,6 / Lock-up 4,6)
2nd gear	km/h (mi/h)	Converter 15 / Lock-up 15 (Converter 9,3 / Lock-up 9,3)
3rd gear	km/h (mi/h)	Converter 28 / Lock-up 29 (Converter 17,4 / Lock-up 18,0)
4th gear	km/h (mi/h)	Converter 46 / Lock-up 50 (Converter 28,5 / Lock-up 31,1)
4th gear: Shown in speedometer and limited by ECU		
Measured with tires		20.5R25
Front axle/rear axle		AWB 15/AWB 15
Rear axle oscillation	± °	13
Ground clearance	mm (in)	470 (18,5)
at oscillation	°	13



Specifications

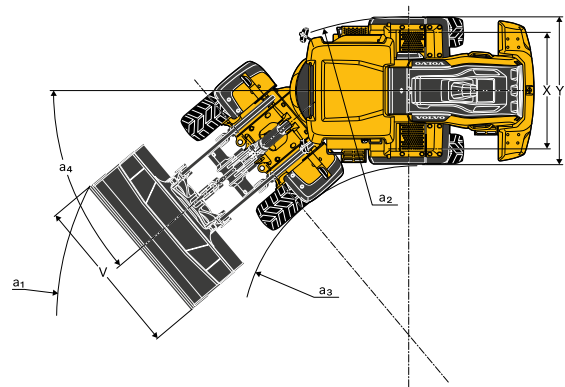
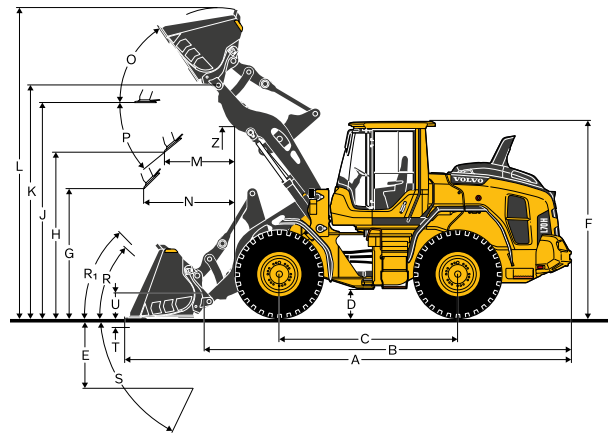
Tires 20.5 R25 L3

			L60H		L60H	
			Standard boom		Long boom	
B	mm	ft in	6.010	19'9"	6.520	21'5"
C	mm	ft in	3.000	9'10"	3.000	9'10"
D	mm	in	440	17,3	430	16,9
F	mm	ft in	3.270	10'9"	3.270	10'9"
G	mm	ft in	2.133	7'0"	2.134	7'0"
J	mm	ft in	3.550	11'8"	4.080	13'5"
K	mm	ft in	3.870	12'8"	4.380	14'4"
O	°			56		56
P _{max}	°			45		42
R	°			43		45
R ₁ *	°			46		50
S	°			79		79
T	mm	in	123	4,84	150	5,91
U	mm	in	410	16,1	590	23,2
X	mm	ft in	1.900	6'3"	1.900	6'3"
Y	mm	ft in	2.430	8'0"	2.430	8'0"
Z	mm	ft in	3.210	10'6"	3.590	11'9"
a ₂	mm	ft in	5.340	17'6"	5.340	17'6"
a ₃	mm	ft in	2.900	9'6"	2.900	9'6"
a ₄		±°		40		40

* Carry position SAE

**Calculated with additional protective guarding

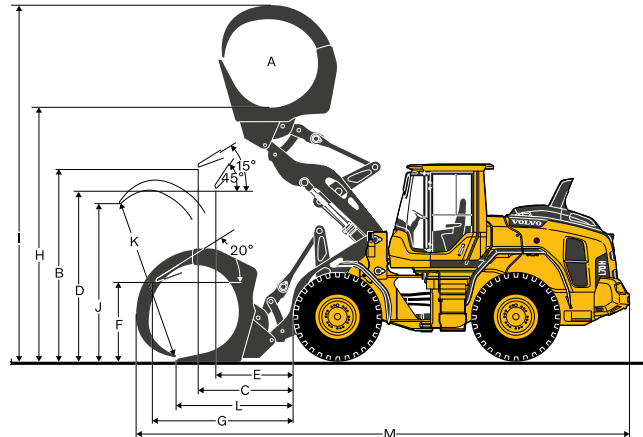
Where applicable, specifications and dimensions are according to ISO 7131, SAE J732, ISO 7546, SAE J742, ISO 14397, SAE J818



Tires: 20.5R25 L3

			L60H	
SAE-Load	kg	lb	3.450	7.606
Operating weight without load*	kg	lb	12.883	28.402
Grapple sales code			82194	
A	m ²	ft ²	1,3	14
B	mm	ft in	3.412	11'2"
C	mm	ft in	1.483	4'10"
D	mm	ft in	2.929	9'7"
E	mm	ft in	1.175	3'10"
F	mm	ft in	1.532	5'0"
G	mm	ft in	2.350	7'9"
H	mm	ft in	4.333	14'3"
I	mm	ft in	5.878	19'3"
J	mm	ft in	1.997	6'7"
K	mm	ft in	2.080	6'10"
L	mm	ft in	1.709	5'7"
M	mm	ft in	7.861	25'9"

* Calculated with additional protective guarding



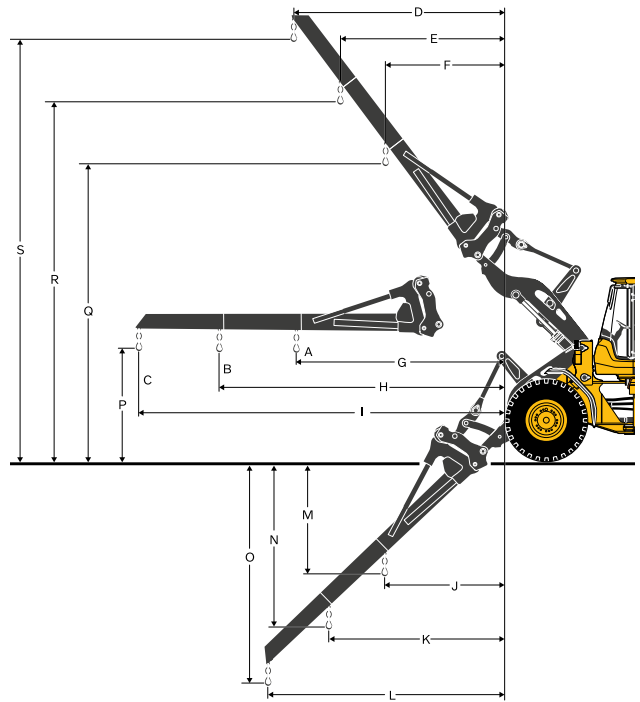
Tires: 20.5R25 L3

			L60H	
Material handling arm sales code			92007	
A*	kg	lb	1.800	3.968
B*	kg	lb	1.400	3.086
C*	kg	lb	1.150	2.535
Static tipping load, straight	kg	lb	3.238	7.139
35deg. Turn	kg	lb	2.910	6.415
at full turn	kg	lb	2.814	6.204
D	mm	ft in	2.592	8'6"
E	mm	ft in	2.002	6'7"
F	mm	ft in	1.465	4'10"
G	mm	ft in	3.270	10'9"
H	mm	ft in	4.305	14'1"
I	mm	ft in	5.439	17'10"
J	mm	ft in	905	3'0"
K	mm	ft in	1.227	4'0"
L	mm	ft in	1.580	5'2"
M	mm	ft in	2.258	7'5"
N	mm	ft in	3.241	10'8"
O	mm	ft in	4.319	14'2"
P	mm	ft in	1.512	5'0"
Q	mm	ft in	5.286	17'4"
R	mm	ft in	6.171	20'3"
S	mm	ft in	7.139	23'5"
Operating weight without load	kg	lb	11.885	26.202

* Op. load at full turn + tipping position

Tipping loads calculated for max. arm length

**Calculated with additional protective guarding

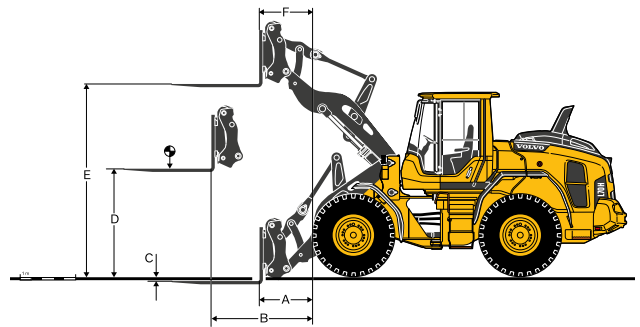


Tires: 20.5R25 L3

			L60H	
Fork frame sales code			83768	
Fork tines sales code (R/L)			80042/80043	
Static tipping load, straight	kg	lb	6.930	15.278
35deg. Turn	kg	lb	6.230	13.735
at full turn	kg	lb	6.024	13.281
at load center distance*	mm	in	600	23,6
A	mm	in	798	31,4
B	mm	in	1.567	61,7
C	mm	in	-38	-1,5
D	mm	in	1.831	72,1
E	mm	in	3.713	146
F	mm	in	700	27,6
Operating weight without load	kg	lb	11.965	26.378

* Firm and level ground

**Calculated with additional protective guarding



Specifications

L60H*

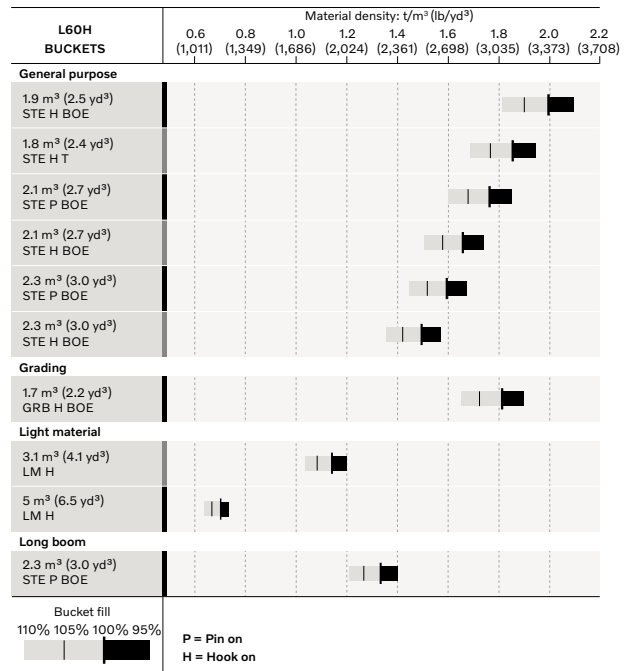
BR 20,5R25 VJT L3		GENERAL PURPOSE										GRADING		LIGHT MATERIAL		LONG BOOM	
		1,8 m³ (2,4 yd³) STE H T	1,9 m³ (2,5 yd³) STE H BOE	2,1 m³ (2,8 yd³) STE P BOE	2,1 m³ (2,8 yd³) STE H BOE	2,3 m³ (3,0 yd³) STE P BOE	2,3 m³ (3,0 yd³) STE H BOE	1,7 m³ (2,2 yd³) GRB H BOE	3,1 m³ (4,1 yd³) LM H	5 m³ (6,5 yd³) LM H	2,3 m³ (3 yd³) STE P BOE						
Volume, heaped ISO/SAE	m³ yd³	1,8 2,4	1,9 2,5	2,1 2,7	2,1 2,7	2,3 3	2,3 3	1,7 2,2	3,1 4,1	5,0 6,5	2,3 3						
Volume at 110% fill factor	m³ yd³	2,0 2,6	2,1 2,7	2,3 3,0	2,3 3	2,5 3,3	2,5 3,3	1,9 2,5	3,4 4,4	5,5 7,2	2,5 3,3						
Static tipping load, straight	kg lb	9.020 19.886	8.860 19.533	9.270 20.437	8.760 19.312	9.190 20.260	8.650 19.070	7.750 17.086	8.460 18.651	8.470 18.673	-1.820 -4.012						
at 35° turn	kg lb	8.080 17.813	7.930 17.483	8.320 18.342	7.830 17.262	8.240 18.166	7.730 17.042	6.930 15.278	7.550 16.645	7.520 16.579	-1.680 -3.704						
at full turn	kg lb	7.800 17.196	7.650 16.865	8.040 17.725	7.560 16.667	7.960 17.549	7.460 16.446	6.690 14.749	7.280 16.050	7.250 15.983	-1.640 -3.616						
Breakout force	kN lbf	84,9 19.086	80,2 18.030	82,9 18.637	76,1 17.108	79,0 17.760	72,8 16.366	60,2 13.533	61,7 13.871	53,8 12.095	+8,0 +1.798						
A	mm ft in	7.410 24'4"	7.340 24'1"	7.300 23'11"	7.400 24'3"	7.370 24'2"	7.470 24'6"	7.650 25'1"	7.680 25'2"	7.910 25'11"	+520 +1'8"						
E	mm ft in	1.190 3'11"	1.140 3'9"	1.110 3'8"	1.200 3'11"	1.160 3'10"	1.260 4'2"	1.400 4'7"	1.480 4'10"	1.700 5'7"	+50 +0'2"						
H	mm ft in	2.750 9'0"	2.800 9'2"	2.820 9'3"	2.760 9'1"	2.780 9'1"	2.720 8'11"	2.510 8'3"	2.580 8'6"	2.430 8'0"	+550 +1'10"						
L	mm ft in	5.110 16'9"	5.110 16'9"	5.120 16'10"	5.170 17'0"	5.190 17'0"	5.240 17'2"	4.530 14'10"	5.280 17'4"	5.480 18'0"	+510 +1'8"						
M	mm ft in	1.070 3'6"	1.050 3'5"	1.020 3'4"	1.090 3'7"	1.060 3'6"	1.140 3'9"	1.130 3'8"	1.320 4'4"	1.500 4'11"	+20 +0'1"						
N	mm ft in	1.580 5'2"	1.590 5'3"	1.570 5'2"	1.610 5'3"	1.590 5'3"	1.630 5'4"	1.490 4'11"	1.630 5'4"	1.670 5'6"	+450 +1'6"						
V	mm ft in	2.500 8'2"	2.500 8'2"	2.500 8'2"	2.500 8'2"	2.500 8'2"	2.500 8'2"	2.500 8'2"	2.550 8'4"	2.650 8'8"	0 0'0"						
a ₁ clearance circle	mm ft in	11.800 38'9"	11.760 38'7"	11.760 38'7"	11.800 38'9"	11.800 38'9"	11.840 38'10"	12.140 39'10"	12.010 39'5"	12.240 40'2"	+480 +1'7"						
Operating weight	kg lb	12.260 27.029	12.320 27.161	12.120 26.720	12.360 27.249	12.160 26.808	12.400 27.337	12.260 27.029	12.450 27.448	12.740 28.087	+230 +507						

*Calculated with additional protective guarding.

Bucket Selection Chart

The chosen bucket is determined by the density of the material and the expected bucket fill factor. The actual bucket volume is often larger than the rated capacity, due to the features of the TP linkage, including an open bucket design, good rollback angles in all positions and good bucket filling performance. The example represents a standard boom configuration. Example: Sand and gravel. Fill factor ~ 105%. Density 1,65 t/m³ (2.781 lb/yd³). Result: The 1,9 m³ (2,5 yd³) bucket carries 2,0 m³ (2,6 yd³). For optimal stability always consult the bucket selection chart.

Material	Bucket fill, %	Material density		ISO/SAE bucket volume		Actual volume	
		t/m³	lb/yd³	m³	yd³	m³	yd³
Earth/Clay	~ 110	~ 1,55	~ 2.613	1,9	2,5	2,1	2,8
		~ 1,40	~ 2.360	2,1	2,8	2,3	3,0
		~ 1,30	~ 2.191	2,3	3,0	2,5	3,3
Sand/Gravel	~ 105	~ 1,65	~ 2.781	1,9	2,5	2,0	2,6
		~ 1,50	~ 2.528	2,1	2,8	2,2	2,9
		~ 1,35	~ 2.275	2,3	3,0	2,1	2,8
Aggregate	~ 100	~ 1,75	~ 2.950	1,9	2,5	1,9	2,5
		~ 1,55	~ 2.613	2,1	2,8	2,1	2,8
		~ 1,55	~ 2.613	2,3	3,0	2,3	3,0
Rock	≤100	~ 1,70	~ 2.865	1,7	2,2	1,7	2,2



How to read bucket fill factor

Supplemental Operating Data

Tires 20.5 R25 L3			Standard boom				Long boom			
			17.5 R25 L2		20.5 R25 L2		600/65 R25 L3		600/65 R25 L3	
Width over tires	mm in		-130 -5,12		+8 +0,31	+96 +3,78		+96 +3,78		+3,78
Ground clearance	mm in		-68 -2,68		-10 -0,39	-30 -1,18		-22 -0,87		-0,87
Tipping load, full turn	kg lb		-337 -743		-166 -366	-72 -159		0		0
Operating weight	kg lb		-544 -1.199		-112 -247	+8 -18		+3 +6,61		+6,61

Calculated with 2,3 m³ (3,0 yd³) STE P BOE, additional protective guarding

Equipment

STANDARD EQUIPMENT
Engine
Exhaust after-treatment system
3-stage air cleaner, pre-cleaner, primary and secondary filter
Indicator glass for coolant level
Preheating of induction air
Fuel pre-filter with water trap
Fuel filter
Crank case breather oil trap
Exhaust heat ventilation
Tires
17.5R25
20.5R25
Drivetrain
Automatic Power Shift
Fully automatic gear shifting, 1-4
PWM-controlled gear shifting
Forward and reverse switch by hydraulic lever console
Rimpull control
Indicator glass for transmission oil level
Differentials: Front, 100% hydraulic diff lock. Rear, conventional
Electrical system
24 V, pre-wired for optional accessories
Alternator 80A/3135W
Battery disconnect switch
Maintenance-free batteries
Battery box, steel
Fuel gauge
Electric horn
Instrument cluster:
Fuel level
Diesel Exhaust Fluid/AdBlue level
Transmission temperature
Coolant temperature
Instrument lighting
Lighting:
Twin halogen front headlights with high and low beams
Parking lights
Double brake and tail lights
Turn signals with flashing hazard light function
Halogen work lights (2 front and 2 rear)

STANDARD EQUIPMENT
Contronic monitoring system
Warning and indicator lights:
Contronic display
Fuel consumption
Battery charging
Diesel Exhaust Fluid/AdBlue consumption
Parking brake
Ambient temperature
Warning and display message:
Clock
Regeneration
Test function for warning and indicator lights
Engine coolant temperature
Brake test
Charge air temperature
Engine oil temperature
Engine oil pressure
Transmission oil temperature
Transmission oil pressure
Hydraulic oil temperature
Brake pressure
Parking brake applied
Brake charging
Overspeed at direction change
Axle oil temperature
Steering pressure
Crank case pressure
Attachment lock open
Level warnings:
Fuel level
Diesel Exhaust Fluid/AdBlue level
Engine coolant level
Transmission oil level
Hydraulic oil level
Washer fluid level
Engine torque reduction in case of malfunction indication:
High engine coolant temperature
High engine oil temperature
Low engine oil pressure
High crank case pressure
High charge air temperature
Engine shutdown to idle in case of malfunction indication:
High transmission oil temperature
Slip in transmission clutches
Key pad, background lit
Start interlock when gear is engaged
Hydraulic system
Main valve, double acting 2-spool with hydraulic pilots
Quick hydraulic oil fill
Variable displacement axial piston pumps (2) for:
Working hydraulics, pilot hydraulics, steering system, brakes
Secondary steering with automatic test function
Cooling fan, brakes
Hydraulic control levers
Mechanical hydraulic lever lock
Automatic boom kick-out
Automatic bucket positioner
Double acting hydraulic cylinders
Indicator glass for hydraulic oil level

Equipment

OPTIONAL EQUIPMENT

Engine

Air pre-cleaner, cyclone type
 Air pre-cleaner, oil-bath type
 Air pre-cleaner, turbo type III
 Engine auto shut down
 Engine block heater, 120V / 230V
 Fuel heater
 Fuel fill strainer
 Hand throttle control
 Max. fan speed, hot climate
 Reversible cooling fan

Drivetrain

Lock-up torque converter
 Rear axle with limited slip
 Speed limiter, 20 km/h (12,5 mph)
 Speed limiter, 30 km/h (18,6 mph)
 Speed limiter, 40 km/h (24,9 mph)

Hydraulic system

Arctic kit: Attachment locking, pilot hoses and hydraulic oil
 Attachment bracket, cast, visibility-optimized
 Attachment bracket, side-tilting
 Separate attachment locking, long boom
 Separate attachment locking, standard boom
 Single acting lifting function
 Boom suspension system
 Hydraulic fluid, biodegradable, Volvo
 Hydraulic fluid, fire resistant
 Hydraulic fluid, for hot climate
 Hydraulic, 3 functions, standard/long boom
 Hydraulic, 4 functions, standard/long boom
 Detent for 3rd hydraulic function
 Adjustable flow for 3rd hydraulic function
 Single lever control, 2 functions
 Single lever control, 3 functions
 Hydraulic, 2 functions Electro-servo, std/long boom
 Hydraulic, 3 functions Electro-servo, std/long boom
 Hydraulic, 4 functions Electro-servo, std/long boom
 Single lever control, 2 funct Electro-servo, std/long boom
 Single lever control, 3 funct Electro-servo, std/long boom
 Single lever control, 4 funct Electro-servo, std/long boom

Brake system

Parking brake alarm, audible

OPTIONAL EQUIPMENT

Cab

ACC control panel, with Fahrenheit scale
 Anchorage for Operator's manual
 Asbestos dust protection filter
 Automatic Climate Control, ACC
 Automatic Climate Control, ACC, corrosion protection condenser
 Cab air pre-cleaner, cyclone type
 Carbon filter - cab
 Remote door opener
 Lunch box holder
 Operator's seat, Volvo air-suspended, Heavy Duty
 Operator's seat, Volvo air-susp, 2pt seat belt
 Operator's seat, Volvo air-susp, 3pt seat belt
 Operator's seat, ISRI, heated, high back
 Operator's seat, ISRI, low back
 Operator's seat, Premium Comfort ISRI, 2pt seat belt
 Operator's seat, Premium Comfort ISRI, 3pt seat belt
 Armrest, operator's seat, ISRI, left only
 Armrest, operator's seat, Volvo, left
 Safety belt, 3" (75mm) width
 Safety belt warning
 Radio installation kit including 12 volt outlet, left-side
 Radio installation kit including 12 volt outlet, right-side
 Radio installation kit, 12V, for USA
 Radio with AUX, Bluetooth and USB connection
 DAB Radio
 Subwoofer
 Forward view mirror
 Rear view mirrors, el.adjusted and heated
 Rear view mirrors, long arm right
 Rear view mirrors, el.adjusted and heated, long arm right
 Steering wheel knob
 Sun blinds, rear windows
 Sun blinds, side windows
 Timer cab heating
 Universal door/ignition key
 Window, sliding, door
 Cab, Hot applications. Roof, steel
 Fire extinguisher cab
 Outside steel protection cab
 Rear view mirrors long arm, cab
 Reinforced windshield, flat

Service and maintenance

Automatic lubrication system
 Automatic lubrication system for long boom
 Oil sampling valve
 Refill pump for automatic lubrication system
 Tool kit
 Wheel nut wrench kit

OPTIONAL EQUIPMENT

Electrical

Battery disconnect switch, additional in cab
Anti-theft device
Halogen Economy package
Halogen Feature package
Halogen Power package
Headlights, assymetric left, halogen
Working lights, attachments, halogen
LED Economy package
LED Feature package
LED Power package
Headlights, assym. left
Headlights, assymetric right, LED
Headlights, assymetric left, LED
Working lights, attachments, LED
Emergency stop
License plate holder, lighting
Reduced function working lights when reverse gear activated
Side marker lamps
Forward camera, colour
Rear view camera including monitor, colour
Rear view mirrors, long arm, right side
Rearview mirrors, adjustable, el. heated
Reverse alarm
Reverse lights
Reversing warning light
Reverse warning light, strobe lightning
Warning beacon (flasher), LED automatic
Warning beacon (flasher), LED
Seatbelt indicator, external
Working lights, attachments, 1 LED
Warning beacon LED
Warning beacon LED automatic
LED Head Light
LED tail light
LED working lights, attachments
LED working lights on cab, front and rear
LED working lights on cab, front, 2 alt. 4 LED lamps
LED working lights on cab, rear, 2 alt. 4 LED lamps
LED working lights, rear in grille, 2 LED lamps
LED working lights, front above head lamps, 2 LED lamps
LED work lights, side on cab, 4 LED lamps
LED light packages
Working lights halogen, attachments
Working lights on cab halogen, front and rear
Working lights on cab halogen, rear
Co Pilot available
Rearview camera in Co pilot
OnBoard Weighing
OnBoard Weighing Task Mode
Tire Pressure Monitoring System
Connected Map
Operator Coaching Start
Operator Coaching Advanced
Max Boom height
Can Bus Interface
Jump start connector, ISO-Type
Delayed Engine Shutdown

OPTIONAL EQUIPMENT

Protective equipment

Anti-theft device
Bellyguard front
Bellyguard rear
Boom cylinder hose and tube guards
Cab roof, heavy duty
Center hinge and rear frame guard
Corrosion protection, painting of machine
Cover plate front frame, heavy-duty
Cover plate, under cab
Cover plates rear frame
Guards for front headlights
Guards for radiator grill
Guards for tail lights, heavy-duty
Wheel/axle seal guards
Window guards, side and rear
Windshield guard

External equipment

Deleted front mudguards
Fire extinguisher
Bracket for fire extinguisher
Fire suppression system
Mudguards, full cover, rear for 80-series tires
Mudflap kit for mudguards, full cover for 80-series tires
Mudguards, full cover, rear and front/rear for 65-series tires
Mudflap kit for mudguards, full cover for 65-series tires
Footsteps front frame
Footsteps, right-hand side
Flexible rear step
Cab ladder, rubber suspended

Other equipment

CareTrack, GSM/Satellite
CE-marking
Comfort Drive Control (CDC)
Comfort Drive Control (CDC) Electro-servo
Secondary steering
Counterweight, logging
Counterweight, signal painted, chevrons
Option for machines without dinitrol
Noise reduction kit, EU excluding decal
Sign, 50 km/h (31mph)
Sign, slow moving vehicle
Agriculture package
Agri Powershift 1-4
Log Loader package
Waste Handler package
Scrap Handler package

Tires and Rims

17.5R25
20.5R25
600/65R25
620/75R26 Agriculture application only
750/65R26 Agriculture application only

Attachments

Buckets:
Straight
Spade nose
High tipping
Light material
Grading
Wear parts:
Bolt-on edge
Bolt-on or weld-on bucket teeth
Segments
Log grapples
Fork equipment
Material handling arm
Snow blade
Broom
Sand spreading bucket
Bale clamp
Drum rotator

Not all products are available in all markets. Under our policy of continuous improvement, we reserve the right to change specifications and design without prior notice. The illustrations do not necessarily show the standard version of the machine.

V O L V O