

V O L V O



Volvo Excavators 52.5 - 57.0 t / 115,830 - 125,600 lb 456 hp

EC530E, EC550E

Volvo Construction Equipment



Welcome to our world

Welcome to a world of industry leading machinery. A world where imagination, hard work and technological innovation will lead the way towards developing a future which is cleaner, smarter, and more connected. A world supported by the enduring values of the Volvo Group. A world of stability, sustainability and innovation. A world which we put our customers at the heart of.

Welcome to the world of Volvo Construction Equipment – we think you're going to like it here.

Working harder, working smarter

For over 180 years Volvo has been a pioneer in the design and manufacture of machines which set the standard for efficiency, performance and uptime. Across our range of excavators, wheel loaders and haulers, our reputation for engineering excellence is unrivalled, which means whatever your operation or application, we can provide a total fleet solution to help you succeed.

Building on our proud history, the Volvo Concept Lab continues to create cutting-edge ideas and innovative concepts, to ensure we offer customers machines which work harder and smarter long into the future.



Solutions for you

Our industry leading machines are just the start of your relationship with Volvo. As your partner, we have developed an extensive range of additional solutions to help you improve uptime, boost productivity and reduce costs.

Designed for your business

Structured across nine blocks, our portfolio of products and services are designed to complement your machine's performance and boost your profitability. Simply put, we offer some of the best guarantees, warranties and technological solutions in the industry today.

There when you need us

Whether you're buying new or used, our global network of dealers and technicians offer around-the-clock support, including machine monitoring and world-class parts availability. It's the basis of everything offered by Volvo Services, so you can be confident we've got you covered right from the start.

 Fuel Efficiency Services	 Productivity Services	 Safety Services
 Financial Services	 Uptime Services	 Rental Services
 Volvo Attachments	 Genuine Volvo Parts	 New life Services

BUILDING TOMORROW

A purpose-built 50-tonner

Introducing the EC530E and EC550E, true 50-tonne machines and new size class excavators for Volvo. Outstanding levels of power and productivity make these crawler excavators the perfect partner for heavy-duty digging, mass excavation and large site preparation.

Big performance

The 50-tonne EC530E and EC550E truly punch above their weight, delivering the digging forces and lifting capacity more commonly found in a 60-tonne machine. Featuring the highest engine power in their class, these machines deliver superior swing torque and tractive force.



The undercarriage for the job

The perfect choice for the toughest applications, the robust EC550E undercarriage features a longer and wider expandable lower frame compared to the EC530E, providing enhanced stability when handling heavier loads. The EC530E regular expandable lower frame has transportation dimensions close to the smaller EC480E with expandable lower frame.



Less passes, more work

Optimize fleet use by up to 20%. These 50-tonne excavators are the perfect partner to 30-45t class Volvo articulated haulers, reducing the number of required passes – dramatically improving cycle times. With the additional support of Volvo Site Simulation, your Volvo dealer can work with you to advise on the optimum fleet configuration and site set-up for your operation.



A weight off your mind

Take control of your productivity with the optional On-Board Weighing – part of the Dig Assist set of apps and powered by the 10" Volvo Co-Pilot display. The intelligent tool provides real-time information on bucket weight ensuring the optimum amount of material is moved with every pass. The system also records total tonnage, per shift or per day, to provide powerful long-term productivity data.





SET NEW STANDARDS

These true 50-tonne crawler excavators, equipped with large buckets, boost productivity by up to 20% – setting new standards for the industry.

Less cost, more profit

Reduce costs and boost profits in the EC530E and EC550E. Features including new electro-hydraulic system, Volvo attachments and Fuel Efficiency Report all contribute towards the unrivalled levels of efficiency delivered by these 50-tonne crawler excavators.

Unique Independent Metering Valve Technology

The latest pioneering innovation from Volvo, the next generation electro-hydraulic system with Independent Metering Valve Technology is the most advanced hydraulic system in the industry. The system provides intelligent electronic control with more control variable, compared to a conventional mechanically coupled hydraulic system. The result is maximum controllability and efficiency according to the specific application at hand.



The right tool for the job

Take on a variety of tasks with our range of factory-delivered attachments, including quick couplers and buckets. Perfectly matched to your machine, Volvo attachments are designed to create a single solid and reliable unit, delivering faster and more fuel-efficient cycle times. What's more, the machine is prepared with the necessary auxiliary piping to power hydraulic attachments such as breakers, thumbs, shears, grapples and more.



Even more efficiency

Fuel is the industry's number one operational cost and Fuel Efficiency Reports help to identify areas where efficiency improvements can be made, providing clear insights into the fuel performance of a fleet, site or individual machine. If you need further support putting insight into action, your Volvo dealer is on hand to help you develop a plan to deliver long-term efficiency gains.





25% MORE FUEL EFFICIENCY

Take fuel efficiency to new levels in the EC530E and EC550E. The next generation electro-hydraulic system with Independent Metering Valve Technology produces up to a 25% improvement in fuel efficiency. Engine pump optimization, which lowers engine rpm while optimizing power, and optimized hydraulic piping and size routings, further contribute towards the incredible levels of fuel efficiency.

Ultimate control

Welcome to the ultimate in operator control and convenience. The revolutionary new generation electro-hydraulics with no hydraulic pilot lines enable a range of intelligent functions which take the operator experience to new levels, including creep mode, motion priority functions, reduced bouncing and optional Comfort Drive Control.

Carry with care

The perfect solution for lift and carry operations, creep mode utilizes an independent pump flow during travel to maintain a constant travel speed.



Comfortable travel

For easy operation and reduced operator fatigue, Comfort Drive Control gives operators the opportunity to move the machine straight forward or backward and spin the machine clockwise or counterclockwise using the advanced joystick rollers with index finger grip, instead of using the pedals.

A smoother shift

Boom and arm bouncing reduction technology dramatically reduces machine shock, resulting in a more comfortable and productive operator performance.





ADAPT TO THE JOB

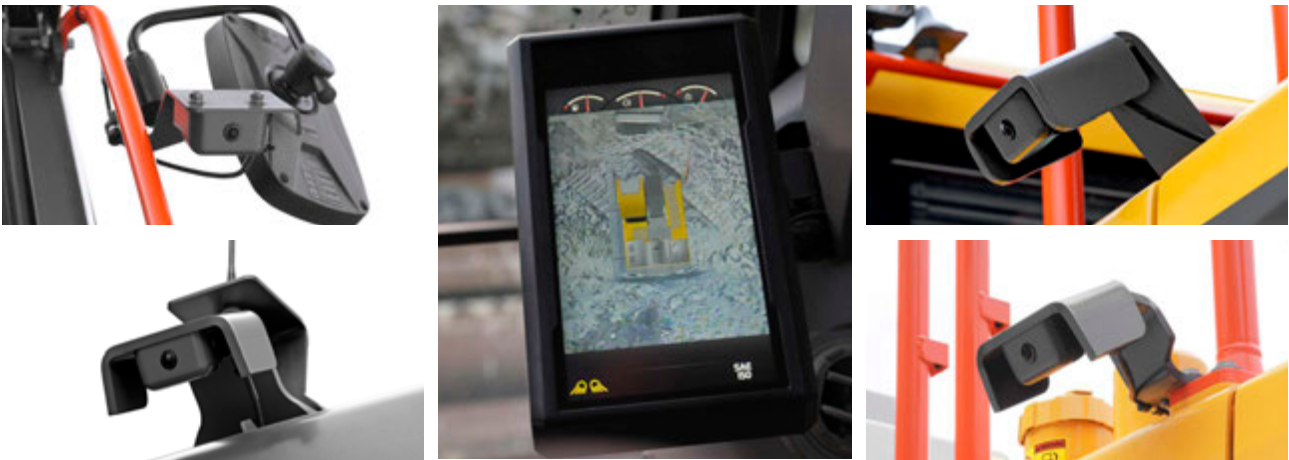
Operators can easily select and adjust a number of functions depending on personal preferences and the task at hand, including Boom/Swing and Boom/Travel priority which enables prioritization of one function over another. Operators can also easily adjust the boom down speed, ideal for precision tasks which require optimum control.

For your comfort and safety

Whether working inside or on the machine, features such as unrivalled visibility and 3-point right-hand side access mean you can be sure that the highest levels of safety have been considered in every design detail of the EC530E and EC550E.

See it all

Operators can work in complete confidence thanks to Volvo Smart View. The system uses front, rear and side cameras to provide a real-time, overhead view of the machine during operation on the colour monitor. The result is safer machine rotation while working, especially in confined spaces.



Industry-renowned cab

Step inside the best cab on the market. The ROPS cab exceeds industry standards for this class of machine, and with low noise and low vibration, operators will experience the ultimate in comfort. Already boasting best-in-class visibility, the optional high visibility cab and one-piece front windshield enhance visibility even more.



Get around safely

Industry renowned features such as bolted anti-slip plates, high visibility guardrails and handrails ensure the highest levels of safety when negotiating the machine. For further convenience, the optional foldable cab entrance step and side walkways fold away to enable easier transportation.





EASY AS 1, 2, 3

Reach the upper structure with safety and confidence thanks to 3-point right-hand side access, also providing access to the handy located DEF tank. A splash guard on the DEF tank makes filling quicker and easier, reducing the risk of spillage and subsequent corrosion.

Work harder for longer

Reduced maintenance requirements, durable design and outstanding reliability means you can count on the EC530E and EC550E to deliver optimum results – shift after shift, day after day.

For the toughest tasks

The 50-tonne EC530E and EC550E are designed to deliver performance which lasts, with an ultra-durable and reinforced undercarriage providing the durability and strength you would expect from a 60-tonne machine. Combine this with a super-strong upper and lower frame, and boom and arm with larger pin size, and these machines are ready to take on the toughest of applications.



Machine monitoring made easy

Maximize machine uptime and reduce repair costs with the CareTrack telematic system. Choose to keep track of your machine yourself or let us take care of it with ActiveCare Direct. Our Volvo Uptime Center will provide telematics monitoring, supplying fleet utilization reporting and notifying you should preventive maintenance action be required.



Keeping you moving

Maintain productivity and machine uptime with our range of widely available, tested and approved Genuine Volvo Parts – all backed by Volvo warranty. Your Volvo dealer can help you stay on track, offering flexible maintenance and repair options, as well as planned servicing, to extend the life of your excavator.





UPTIME YOU CAN COUNT ON

Hydraulic pilot lines have been removed in the EC530E and EC550E, reducing the number of couplings required, for increased machine reliability. Electric connectors which exceed Ingress Protection 69K water-proofed standards also contribute to long component life. Spend more time working without interruption thanks to 1,000-hour engine oil and engine oil filter change intervals; grouped filters accessible from the ground level make servicing quick and easy.

Move more for less

True 50-tonne performance

- Bigger buckets, 20% more productivity
- Highest engine power of its class
- Superior swing torque and tractive force
- Digging forces/lifting capacity commonly found in a 60-tonne machine
- Handle heavier loads with the longer/wider EC550E undercarriage
- Perfect match to 30-45t Volvo Articulated Haulers

Big on efficiency

- Electro-hydraulic system with Independent Metering Valve Technology: +25% fuel efficiency
- Engine pump optimization
- Optimized hydraulic piping & size routing

Ultimate control

- Boom/Swing and Boom/Travel priority
- Adjustable boom down speed
- Boom and arm bouncing reduction
- Creep mode: carry with care
- Comfort Drive Control: joystick steering



Volvo Services: boost your profits

- On-Board Weighing, powered by Dig Assist
- Range of matched Volvo Attachments
- Volvo Site Simulation
- ActiveCare Direct: telematics monitoring and fleet utilization reporting



Quick and easy servicing

- 3-point right-hand side access to the upper structure
- Removed hydraulic pilot lines
- Splash guard on the DEF tank
- Grouped filters, accessed from ground-level or side walkway

Get around safely

- ROPS cab: spacious, ergonomic and low-noise
- Volvo Smart View camera
- High-visibility cab, One-piece front window (optional)
- Bolted anti-slip plates
- Foldable walkways (optional)
- High visibility handrails/guardrails

Work harder for longer

- Ultra-durable and reinforced undercarriage, upper and lower frame
- Reinforced digging equipment, including larger pin size
- Electric connectors exceeding Ingress Protection 69K water-proofed standards
- 1,000hr engine oil and engine oil filter change intervals

Volvo EC530E, EC550E in detail

Engine

Volvo diesel engine uses Volvo Advanced Combustion Technology (V-ACT) to deliver lower emissions, superior performance and fuel efficiency. The engine uses precise, high pressure fuel injectors, turbo charger and intercooler, and electronic engine controls to optimize machine performance.

Air Filter: 3-stage and precleaner.

Automatic Idling System: Reduces engine speed to idle when the levers and pedals are not activated resulting in less fuel consumption and low cab noise levels.

Engine	Volvo	D13J
Max power at	r/min (r/s)	1,600 (27)
Net, ISO 9249/SAE J1349	kW (hp)	339 (455)
Gross, ISO 14396/SAE J1995	kW (hp)	340 (456)
Max torque	Nm (ft lbf)	2,200 (1,623)
at engine speed	r/min (r/s)	1,300 (22)
No. of cylinders		6
Displacement	l (in ³)	12.8 (781)
Bore	mm (in)	131 (5.16)
Stroke	mm (in)	158 (6.22)

Electrical System

High-capacity electrical system that is well protected. Waterproof double-lock harness plugs are used to secure corrosion-free connections. The main relays and solenoid valves are shielded to prevent damage. The master switch is standard.

Voltage	V	24
Batteries	V	2 x 12
Battery capacity	Ah	200
Alternator	V/A	28/80

Undercarriage

The undercarriage has a robust X-shaped frame. Greased and sealed track chains are standard.

EC530E

Track shoes		2 x 50
Link pitch	mm (in)	229 (9)
Shoe width, triple grouser	mm (in)	600 / 750 / 900 (24 / 30 / 36)
Shoe width, double grouser	mm (in)	600 (24)
Bottom rollers		2 x 9
Top rollers		2 x 3

EC550E

Track shoes		2 x 51
Link pitch	mm (in)	229 (9)
Shoe width, triple grouser	mm (in)	600 / 750 / 900 (24 / 30 / 36)
Shoe width, double grouser	mm (in)	600 (24)
Bottom rollers		2 x 9
Top rollers (retractable)		2 x 3

Cab

The operator's cab has easy access via a wide door opening. The cab is supported on hydraulic dampening mounts to reduce shock and vibration levels. These along with sound absorbing lining provide low noise levels. The cab has excellent all-round visibility. The front windshield can easily slide up into the ceiling, and the lower front glass can be removed and stored in the side door.

Integrated air-conditioning and heating system: The pressurized and filtered cab air is supplied by an automatically-controlled fan. The air is distributed throughout the cab from 14 vents.

Ergonomic operator's seat: The adjustable seat and joystick console move independently to accommodate the operator. The seat has nine different adjustments plus a seat belt for the operator's comfort and safety.

Refrigerant of the type R134a is used when this machine is equipped with air conditioning. Contains fluorinated greenhouse gas R134a, Global Warming Potential 1.430 t CO₂-eq.

Hydraulic System

Main pump, Type 2 x Variable displacement axial piston pumps

Maximum flow	l/min (gal/min)	2 x 416 (2 x 110)
--------------	-----------------	-------------------

Pilot pump, Type Gear pump

Maximum flow	l/min (gal/min)	16 (4.2)
--------------	-----------------	----------

Max. pressure

Implement	MPa (psi)	33.8/36.3 (4,910/5,260)
Travel circuit	MPa (psi)	33.8 (4,910)
Slew circuit	MPa (psi)	27.9 (4,050)
Pilot circuit	MPa (psi)	3.9 (570)

Hydraulic Motors

Travel: Variable displacement axial piston motor with mechanical brake.

Slew: Fixed displacement piston motor with mechanical brake.

Hydraulic Cylinders

Mono boom		2
Bore x Stroke	ø x mm (ø x in)	175 x 1590 (6.9 x 62.6)
Arm		1
Bore x Stroke	ø x mm (ø x in)	190 x 1942 (7.5 x 76.5)
Bucket		1
Bore x Stroke	ø x mm (ø x in)	170 x 1330 (6.7 x 52.4)
ME Bucket		1
Bore x Stroke	ø x mm (ø x in)	180 x 1335 (7.1 x 52.6)



Swing System

The swing system uses an axial piston motors, driving a planetary gearbox for maximum torque. An automatic holding brake and anti-rebound valve are standard.

Max. slew speed	r/min	9.4
Max. slew torque	kNm (ft lbf)	197 (145,300)

Travel System

Each track is powered by an automatic two-speed shift travel motor. The track brakes are multi-disc, spring-applied and hydraulic released. The travel motor, brake and planetary gears are well protected within the track frame.

Max. drawbar pull	kN (lbf)	350 (78,683)
Max. travel speed (low)	km/h (mi/h)	3.5 (2.2)
Max. travel speed (high)	km/h (mi/h)	5.4 (3.4)
Gradeability	°	35

Service Refill

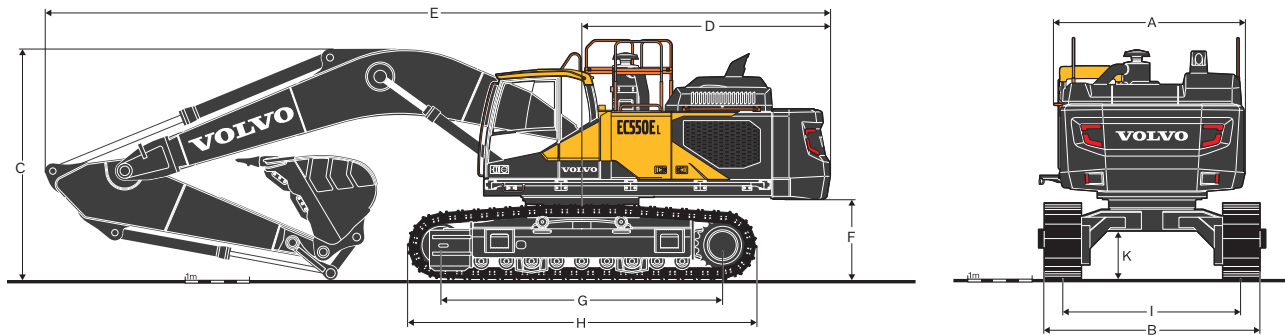
Fuel tank	l (gal)	680 (180)
DEF/AdBlue® tank	l (gal)	62.5 (17)
Hydraulic system, total	l (gal)	590 (156)
Hydraulic tank	l (gal)	270 (71)
Engine oil	l (gal)	55 (15)
Engine coolant	l (gal)	66 (17)
Slew reduction unit	l (gal)	2 x 6.4 (2 x 1.7)
Travel reduction unit	l (gal)	2 x 8.0 (2 x 2.1)

Sound Level

Sound pressure level in cab according to ISO 6396		
L _{pA}	dB	71
External sound level according to ISO 6395 and EU Noise Directive 2000/14/EC		
L _{WA}	dB	107



Specifications



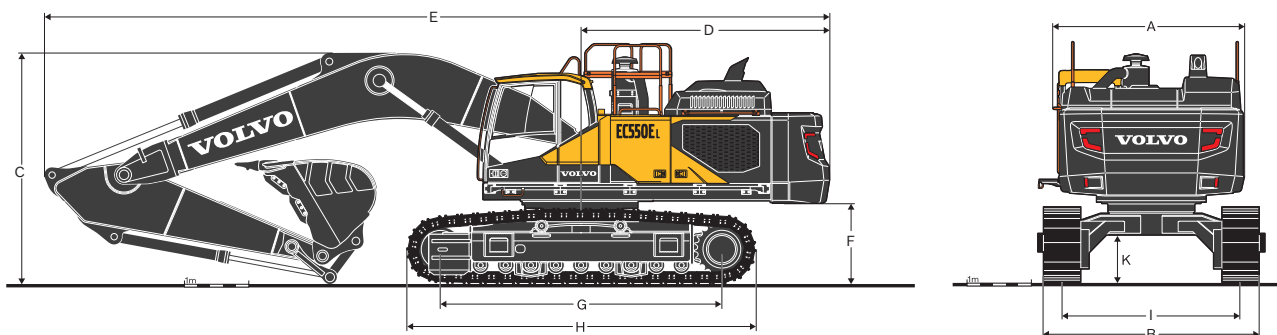
DIMENSIONS

Description	Unit		EC530EL											
			Retractable undercarriage											
Boom	m, ft in		6.5, 21'4"				7.0, 23'0"							
Arm	m, ft in		2.55	8'4"	3.0	9'10"	2.55	8'4"	3.0	9'10"	3.35	11'0"	3.9	12'10"
A. Overall width of upper structure **	mm	ft in	2,990	9'10"	2,990	9'10"	2,990	9'10"	2,990	9'10"	2,990	9'10"	2,990	9'10"
B. Overall width ***														
Retracted														
600mm (24") shoes	mm	ft in	2,990	9'10"	2,990	9'10"	2,990	9'10"	2,990	9'10"	2,990	9'10"	2,990	9'10"
750mm (30") shoes	mm	ft in	3,140	10'4"	3,140	10'4"	3,140	10'4"	3,140	10'4"	3,140	10'4"	3,140	10'4"
900mm (36") shoes	mm	ft in	3,290	10'10"	3,290	10'10"	3,290	10'10"	3,290	10'10"	3,290	10'10"	3,290	10'10"
Extended														
600mm (24") shoes	mm	ft in	3,490	11'5"	3,490	11'5"	3,490	11'5"	3,490	11'5"	3,490	11'5"	3,490	11'5"
750mm (30") shoes	mm	ft in	3,640	11'11"	3,640	11'11"	3,640	11'11"	3,640	11'11"	3,640	11'11"	3,640	11'11"
900mm (36") shoes	mm	ft in	3,790	12'5"	3,790	12'5"	3,790	12'5"	3,790	12'5"	3,790	12'5"	3,790	12'5"
C. Overall height *														
Cab	mm	ft in	3,415	11'2"	3,415	11'2"	3,415	11'2"	3,415	11'2"	3,415	11'2"	3,415	11'2"
FOG	mm	ft in	3,520	11'7"	3,520	11'7"	3,520	11'7"	3,520	11'7"	3,520	11'7"	3,520	11'7"
Engine hood	mm	ft in	3,290	10'10"	3,290	10'10"	3,290	10'10"	3,290	10'10"	3,290	10'10"	3,290	10'10"
Diffuser	mm	ft in	3,645	12'0"	3,645	12'0"	3,645	12'0"	3,645	12'0"	3,645	12'0"	3,645	12'0"
Handrail and Guardrail, folded	mm	ft in	3,385	11'1"	3,385	11'1"	3,385	11'1"	3,385	11'1"	3,385	11'1"	3,385	11'1"
Handrail, unfolded	mm	ft in	3,670	12'0"	3,670	12'0"	3,670	12'0"	3,670	12'0"	3,670	12'0"	3,670	12'0"
Guardrail, unfolded	mm	ft in	3,870	12'8"	3,870	12'8"	3,870	12'8"	3,870	12'8"	3,870	12'8"	3,870	12'8"
With Boom/Arm/Bucket (with hydraulic hoses)	mm	ft in	4,400	14'5"	4,340	14'3"	4,200	13'9"	4,010	13'2"	3,910	12'10"	3,930	12'11"
With Boom/Arm (with hydraulic hoses)	mm	ft in	4,170	13'8"	4,145	13'7"	4,020	13'2"	3,910	12'10"	3,870	12'8"	3,905	12'10"
With Boom (with hydraulic hoses)	mm	ft in	3,390	11'1"	3,390	11'1"	3,180	10'5"	3,180	10'5"	3,180	10'5"	3,180	10'5"
D. Tail swing radius	mm	ft in	3,880	12'9"	3,880	12'9"	3,880	12'9"	3,880	12'9"	3,880	12'9"	3,880	12'9"
E. Overall length														
With Boom/Arm/Bucket	mm	ft in	11,770	38'7"	11,760	38'7"	12,270	40'3"	12,260	40'3"	12,240	40'2"	12,235	40'2"
With Boom/Arm	mm	ft in	11,750	38'7"	11,750	38'7"	12,255	40'2"	12,245	40'2"	12,230	40'1"	12,230	40'1"
With Boom	mm	ft in	10,290	33'9"	10,290	33'9"	10,810	35'6"	10,810	35'6"	10,810	35'6"	10,810	35'6"
F. Counterweight clearance *	mm	ft in	1,370	4'6"	1,370	4'6"	1,370	4'6"	1,370	4'6"	1,370	4'6"	1,370	4'6"
G. Tumbler length	mm	ft in	4,400	14'5"	4,400	14'5"	4,400	14'5"	4,400	14'5"	4,400	14'5"	4,400	14'5"
H. Track length	mm	ft in	5,460	17'11"	5,460	17'11"	5,460	17'11"	5,460	17'11"	5,460	17'11"	5,460	17'11"
I. Track gauge														
Retracted	mm	ft in	2,390	7'10"	2,390	7'10"	2,390	7'10"	2,390	7'10"	2,390	7'10"	2,390	7'10"
Extended	mm	ft in	2,890	9'6"	2,890	9'6"	2,890	9'6"	2,890	9'6"	2,890	9'6"	2,890	9'6"
K. Min. ground clearance *	mm	ft in	735	2'5"	735	2'5"	735	2'5"	735	2'5"	735	2'5"	735	2'5"

* Without shoe grouser

** Exclude walkway, handrail

*** Shoe end to end



DIMENSIONS

Description	Unit	EC550E Wide retractable undercarriage											
		6.5, 21'4"				7.0, 23'0"							
Boom	m, ft in												
Arm	m, ft in	2.55	8'4"	3.0	9'10"	2.55	8'4"	3.0	9'10"	3.35	11'0"	3.9	12'10"
A. Overall width of upper structure **	mm ft in	2990	9'10"	2990	9'10"	2990	9'10"	2990	9'10"	2990	9'10"	2990	9'10"
B. Overall width ***													
Retracted													
600mm (24") shoes	mm ft in	3,400	11'2"	3,400	11'2"	3,400	11'2"	3,400	11'2"	3,400	11'2"	3,400	11'2"
750mm (30") shoes	mm ft in	3,550	11'8"	3,550	11'8"	3,550	11'8"	3,550	11'8"	3,550	11'8"	3,550	11'8"
900mm (36") shoes	mm ft in	3,700	12'2"	3,700	12'2"	3,700	12'2"	3,700	12'2"	3,700	12'2"	3,700	12'2"
Extended													
600mm (24") shoes	mm ft in	3,900	12'10"	3,900	12'10"	3,900	12'10"	3,900	12'10"	3,900	12'10"	3,900	12'10"
750mm (30") shoes	mm ft in	4,050	13'3"	4,050	13'3"	4,050	13'3"	4,050	13'3"	4,050	13'3"	4,050	13'3"
900mm (36") shoes	mm ft in	4,200	13'9"	4,200	13'9"	4,200	13'9"	4,200	13'9"	4,200	13'9"	4,200	13'9"
C. Overall height *													
Cab	mm ft in	3,415	11'2"	3,415	11'2"	3,415	11'2"	3,415	11'2"	3,415	11'2"	3,415	11'2"
FOG	mm ft in	3,520	11'7"	3,520	11'7"	3,520	11'7"	3,520	11'7"	3,520	11'7"	3,520	11'7"
Engine hood	mm ft in	3,290	10'10"	3,290	10'10"	3,290	10'10"	3,290	10'10"	3,290	10'10"	3,290	10'10"
Diffuser	mm ft in	3,645	12'0"	3,645	12'0"	3,645	12'0"	3,645	12'0"	3,645	12'0"	3,645	12'0"
Handrail and Guardrail, folded	mm ft in	3,385	11'1"	3,385	11'1"	3,385	11'1"	3,385	11'1"	3,385	11'1"	3,385	11'1"
Handrail, unfolded	mm ft in	3,670	12'0"	3,670	12'0"	3,670	12'0"	3,670	12'0"	3,670	12'0"	3,670	12'0"
Guardrail, unfolded	mm ft in	3,870	12'8"	3,870	12'8"	3,870	12'8"	3,870	12'8"	3,870	12'8"	3,870	12'8"
With Boom/Arm/Bucket (with hydraulic hoses)	mm ft in	4,400	14'5"	4,340	14'3"	4,200	13'9"	4,010	13'2"	3,910	12'10"	3,930	12'11"
With Boom/Arm (with hydraulic hoses)	mm ft in	4,170	13'8"	4,145	13'7"	4,020	13'2"	3,910	12'10"	3,870	12'8"	3,905	12'10"
With Boom (with hydraulic hoses)	mm ft in	3,390	11'1"	3,390	11'1"	3,180	10'5"	3,180	10'5"	3,180	10'5"	3,180	10'5"
D. Tail swing radius	mm ft in	3,880	12'9"	3,880	12'9"	3,880	12'9"	3,880	12'9"	3,880	12'9"	3,880	12'9"
E. Overall length													
With Boom/Arm/Bucket	mm ft in	11,770	38'7"	11,760	38'7"	12,270	40'3"	12,260	40'3"	12,240	40'2"	12,235	40'2"
With Boom/Arm	mm ft in	11,750	38'7"	11,750	38'7"	12,255	40'2"	12,245	40'2"	12,230	40'1"	12,230	40'1"
With Boom	mm ft in	10,290	33'9"	10,290	33'9"	10,810	35'6"	10,810	35'6"	10,810	35'6"	10,810	35'6"
F. Counterweight clearance *	mm ft in	1,370	4'6"	1,370	4'6"	1,370	4'6"	1,370	4'6"	1,370	4'6"	1,370	4'6"
G. Tumbler length	mm ft in	4,515	14'10"	4,515	14'10"	4,515	14'10"	4,515	14'10"	4,515	14'10"	4,515	14'10"
H. Track length	mm ft in	5,580	18'4"	5,580	18'4"	5,580	18'4"	5,580	18'4"	5,580	18'4"	5,580	18'4"
I. Track gauge													
Retracted	mm ft in	2,800	9'2"	2,800	9'2"	2,800	9'2"	2,800	9'2"	2,800	9'2"	2,800	9'2"
Extended	mm ft in	3,300	10'10"	3,300	10'10"	3,300	10'10"	3,300	10'10"	3,300	10'10"	3,300	10'10"
K. Min. ground clearance *	mm ft in	735	2'5"	735	2'5"	735	2'5"	735	2'5"	735	2'5"	735	2'5"

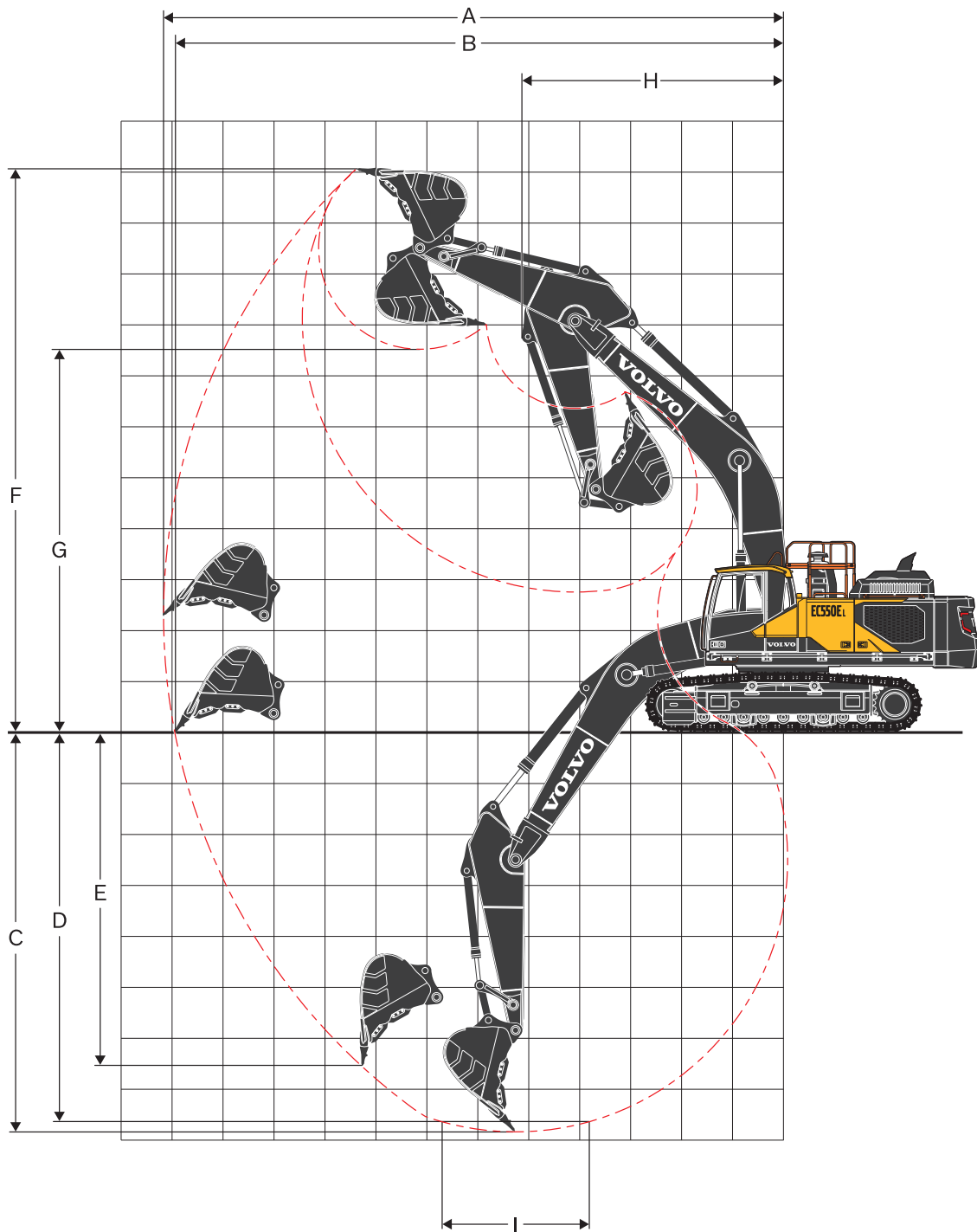
* Without shoe grouser

** Exclude walkway, handrail

*** Shoe end to end

Specifications

WORKING RANGE																
Description		Unit		EC530E and EC550E												
Boom		m, ft in		6.5, 21'4"				7.0, 23'0"								
Arm		m	ft in	2.55	8'4"	3.0	9'10"	2.55	8'4"	3.0	9'10"	3.35	11'0"	3.9	12'10"	
A. Max. digging reach		mm	ft in	10,970	36'0"	11,330	37'2"	11,490	37'8"	11,850	38'11"	12,180	40'0"	12,680	41'7"	
B. Max. digging reach on ground		mm	ft in	10,690	35'1"	11,060	36'3"	11,220	36'10"	11,590	38'0"	11,930	39'2"	12,430	40'9"	
C. Max. digging depth		mm	ft in	6,450	21'2"	6,900	22'8"	6,890	22'7"	7,340	24'1"	7,690	25'3"	8,240	27'0"	
D. Max. digging depth (2.44 m / 8'0" level)		mm	ft in	6,280	20'7"	6,750	22'2"	6,720	22'1"	7,190	23'7"	7,550	24'9"	8,110	26'7"	
E. Max. vertical wall digging depth		mm	ft in	5,680	18'8"	5,850	19'2"	5,980	19'7"	6,090	19'12"	6,410	21'0"	6,840	22'5"	
F. Max. cutting height		mm	ft in	10,740	35'3"	10,740	35'3"	11,060	36'3"	11,060	36'3"	11,210	36'9"	11,380	37'4"	
G. Max. dumping height		mm	ft in	7,100	23'4"	7,160	23'6"	7,450	24'5"	7,510	24'8"	7,760	25'6"	7,850	25'9"	
H. Min. front slew radius		mm	ft in	4,810	15'9"	4,780	15'8"	5,210	17'1"	5,170	17'0"	5,140	16'10"	5,050	16'7"	
DIGGING FORCES WITH DIRECT FIT BUCKET																
Bucket radius		mm	in	1,965	77"	1,965	77"	1,840	72"	1,840	72"	1,840	72"	1,840	72"	
Breakout force - bucket	Normal	SAE J1179	kN	lb	267	60,050	267	60,050	251	56,450	251	56,450	251	56,450	251	56,450
	Power boost	SAE J1179	kN	lb	287	64,550	287	64,550	269	60,500	269	60,500	269	60,500	269	60,500
	Normal	ISO 6015	kN	lb	307	69,050	307	69,050	287	64,550	287	64,550	287	64,550	287	64,550
	Power boost	ISO 6015	kN	lb	329	74,000	329	74,000	308	69,270	308	69,270	308	69,270	308	69,270
Tearout force - dipper arm	Normal	SAE J1179	kN	lb	247	55,550	227	51,050	258	58,030	236	53,080	220	49,480	196	44,080
	Power boost	SAE J1179	kN	lb	265	59,600	243	54,650	277	62,300	253	56,900	235	52,850	210	47,230
	Normal	ISO 6015	kN	lb	256	57,580	233	52,400	264	59,380	241	54,200	223	50,150	199	44,760
	Power boost	ISO 6015	kN	lb	274	61,630	250	56,230	284	63,870	258	58,030	240	53,980	213	47,910
Rotation angle, bucket		°		168		168		178		178		178		178		



Specifications

BUCKET SELECTION GUIDE

Bucket type		Capacity		Cutting width (inner)		Weight		Teeth		EC530EL retractable undercarriage					
										900 mm (36") shoe, 10,600 kg (23,370 lb) counterweight					
										6.5 m (21'4") boom			7.0 m (23') boom		
										m ³	yd ³	mm	in	kg	lb
Direct fit Buckets	General Purpose	2.84	3.71	1,940	76	2,554	5,632	5	C	C	C	C	C	C	
		3.31	4.33	2,190	86	2,841	6,264	6	C	C	C	C	C	B	
		4.60	6.02	2,340	92	3,363	7,415	6	B	A	A	X	X	X	
	Heavy Duty	2.40	3.14	1,710	67	2,499	5,510	5	D	D	D	D	D	D	
		2.66	3.48	1,840	72	2,587	5,703	5	D	D	D	D	D	C	
		2.84	3.71	1,940	76	2,682	5,914	5	D	D	D	D	D	C	
		3.31	4.33	2,190	86	2,985	6,580	6	D	D	C	C	B	B	
		3.82	5.00	2,020	80	2,990	6,591	5	C	C	B	B	B	A	
		2.84	3.71	2,000	79	3,456	7,619	4	D	D	D	C	C	B	
	Extra Duty	3.31	4.33	2,250	89	3,851	8,491	5	C	C	B	B	B	A	
		2.84	3.71	1,940	76	2,554	5,632	5	C	C	C	C	C	B	
		3.31	4.33	2,190	86	2,841	6,264	6	C	C	C	B	B	A	
Buckets with UQC	General Purpose	4.60	6.02	2,340	92	3,363	7,415	6	A	X	X	X	X	X	
		2.40	3.14	1,710	67	2,499	5,510	5	D	D	D	D	D	C	
		2.66	3.48	1,840	72	2,587	5,703	5	D	D	D	D	C	B	
	Heavy Duty	2.84	3.71	1,940	76	2,682	5,914	5	D	D	D	C	C	B	
		3.31	4.33	2,190	86	2,985	6,580	6	C	C	C	B	B	A	
		3.82	5.00	2,020	80	2,990	6,591	5	C	B	B	A	A	X	
		2.84	3.71	2,000	79	3,456	7,619	4	D	C	C	B	B	A	
		3.31	4.33	2,250	89	3,851	8,491	5	C	B	B	A	X	X	
		2.84	3.71	1,940	76	2,554	5,632	5	C	C	C	C	C	B	
	Direct fit Buckets	General Purpose	3.31	4.33	2,190	86	2,841	6,264	6	C	C	C	C	C	B
			4.60	6.02	2,340	92	3,363	7,415	6	B	B	B	A	X	X
			2.40	3.14	1,710	67	2,499	5,510	5	D	D	D	D	D	D
Heavy Duty		2.66	3.48	1,840	72	2,587	5,703	5	D	D	D	D	D	D	
		2.84	3.71	1,940	76	2,682	5,914	5	D	D	D	D	D	C	
		3.31	4.33	2,190	86	2,985	6,580	6	D	D	D	C	C	B	
		3.82	5.00	2,020	80	2,990	6,591	5	D	C	C	B	B	A	
		2.84	3.71	2,000	79	3,456	7,619	4	D	D	D	D	C	B	
		3.31	4.33	2,250	89	3,851	8,491	5	D	C	C	B	B	A	
Direct fit Buckets with UQC		General Purpose	2.84	3.71	1,940	76	2,554	5,632	5	C	C	C	C	C	B
			3.31	4.33	2,190	86	2,841	6,264	6	C	C	C	B	B	A
			4.60	6.02	2,340	92	3,363	7,415	6	B	A	A	X	X	X
	Heavy Duty	2.40	3.14	1,710	67	2,499	5,510	5	D	D	D	D	D	D	
		2.66	3.48	1,840	72	2,587	5,703	5	D	D	D	D	D	C	
		2.84	3.71	1,940	76	2,682	5,914	5	D	D	D	D	C	B	
		3.31	4.33	2,190	86	2,985	6,580	6	D	C	C	B	B	A	
		3.82	5.00	2,020	80	2,990	6,591	5	C	B	B	B	A	X	
		2.84	3.71	2,000	79	3,456	7,619	4	D	D	C	C	B	A	
	Extra Duty	3.31	4.33	2,250	89	3,851	8,491	5	C	B	B	A	A	X	

Please consult with your Volvo dealer for the proper match of buckets and attachments to suit the application. The recommendations are given as a guide only, based on typical operation conditions.
Bucket capacity based on ISO 7451, heaped material with a 1:1 angle of repose.

Maximum material density
D: 2,100 kg/m³ (3,500 lb/yd³)
C: 1,800 kg/m³ (3,000 lb/yd³)
B: 1,500 kg/m³ (2,500 lb/yd³)
A: 1,200 kg/m³ (2,000 lb/yd³)

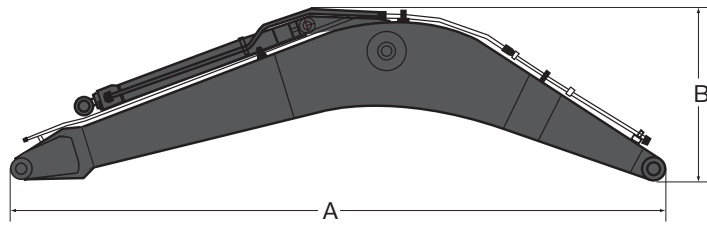
BUCKET SELECTION GUIDE

Bucket type		Capacity		Cutting width (inner)		Weight		Teeth	EC550EL wide retractable undercarriage					
									900 mm (36") shoe, 10,600 kg (23,370 lb) counterweight					
				6.5 m (21'4") boom			7.0 m (23') boom							
		m ³	yd ³	mm	in	kg	lb	EA	2.55 m (8'4")	3.0 m (9'10")	2.55 m (8'4")	3.0 m (9'10")	3.35 m (11')	3.9 m (12'10")
Direct fit Buckets	General Purpose	2.84	3.71	1,940	76	2,554	5,632	5	C	C	C	C	C	C
		3.31	4.33	2,190	86	2,841	6,264	6	C	C	C	C	C	C
		4.60	6.02	2,340	92	3,363	7,415	6	C	C	B	B	B	A
	Heavy Duty	2.40	3.14	1,710	67	2,499	5,510	5	D	D	D	D	D	D
		2.66	3.48	1,840	72	2,587	5,703	5	D	D	D	D	D	D
		2.84	3.71	1,940	76	2,682	5,914	5	D	D	D	D	D	D
		3.31	4.33	2,190	86	2,985	6,580	6	D	D	D	D	D	C
		3.82	5.00	2,020	80	2,990	6,591	5	D	D	D	C	C	B
		3.82	5.00	2,020	80	2,990	6,591	5	D	D	D	C	C	B
	Extra Duty	2.84	3.71	2,000	79	3,456	7,619	4	D	D	D	D	D	D
		3.31	4.33	2,250	89	3,851	8,491	5	D	D	D	C	C	B
		3.31	4.33	2,250	89	3,851	8,491	5	D	D	D	C	C	B
Buckets with UQC	General Purpose	2.84	3.71	1,940	76	2,554	5,632	5	C	C	C	C	C	C
		3.31	4.33	2,190	86	2,841	6,264	6	C	C	C	C	C	B
		4.60	6.02	2,340	92	3,363	7,415	6	C	B	B	A	A	X
	Heavy Duty	2.40	3.14	1,710	67	2,499	5,510	5	D	D	D	D	D	D
		2.66	3.48	1,840	72	2,587	5,703	5	D	D	D	D	D	D
		2.84	3.71	1,940	76	2,682	5,914	5	D	D	D	D	D	D
		3.31	4.33	2,190	86	2,985	6,580	6	D	D	D	C	C	B
		3.82	5.00	2,020	80	2,990	6,591	5	D	C	C	C	B	B
		3.82	5.00	2,020	80	2,990	6,591	5	D	C	C	C	B	B
	Extra Duty	2.84	3.71	2,000	79	3,456	7,619	4	D	D	D	D	D	C
		3.31	4.33	2,250	89	3,851	8,491	5	D	D	D	C	B	A
		3.31	4.33	2,250	89	3,851	8,491	5	D	D	D	C	B	A
Direct fit Buckets	General Purpose	2.84	3.71	1,940	76	2,554	5,632	5	C	C	C	C	C	C
		3.31	4.33	2,190	86	2,841	6,264	6	C	C	C	C	C	C
		4.60	6.02	2,340	92	3,363	7,415	6	C	C	C	B	B	A
	Heavy Duty	2.40	3.14	1,710	67	2,499	5,510	5	D	D	D	D	D	D
		2.66	3.48	1,840	72	2,587	5,703	5	D	D	D	D	D	D
		2.84	3.71	1,940	76	2,682	5,914	5	D	D	D	D	D	D
		3.31	4.33	2,190	86	2,985	6,580	6	D	D	D	D	D	C
		3.82	5.00	2,020	80	2,990	6,591	5	D	D	D	D	C	C
		3.82	5.00	2,020	80	2,990	6,591	5	D	D	D	D	C	C
	Extra Duty	2.84	3.71	2,000	79	3,456	7,619	4	D	D	D	D	D	D
		3.31	4.33	2,250	89	3,851	8,491	5	D	D	D	D	C	C
		3.31	4.33	2,250	89	3,851	8,491	5	D	D	D	D	C	C
Direct fit Buckets with UQC	General Purpose	2.84	3.71	1,940	76	2,554	5,632	5	C	C	C	C	C	C
		3.31	4.33	2,190	86	2,841	6,264	6	C	C	C	C	C	C
		4.60	6.02	2,340	92	3,363	7,415	6	C	B	B	B	A	X
	Heavy Duty	2.40	3.14	1,710	67	2,499	5,510	5	D	D	D	D	D	D
		2.66	3.48	1,840	72	2,587	5,703	5	D	D	D	D	D	D
		2.84	3.71	1,940	76	2,682	5,914	5	D	D	D	D	D	D
		3.31	4.33	2,190	86	2,985	6,580	6	D	D	D	D	C	C
		3.82	5.00	2,020	80	2,990	6,591	5	D	D	C	C	B	B
		3.82	5.00	2,020	80	2,990	6,591	5	D	D	C	C	B	B
	Extra Duty	2.84	3.71	2,000	79	3,456	7,619	4	D	D	D	D	D	C
		3.31	4.33	2,250	89	3,851	8,491	5	D	D	D	C	B	B
		3.31	4.33	2,250	89	3,851	8,491	5	D	D	D	C	B	B

Please consult with your Volvo dealer for the proper match of buckets and attachments to suit the application. The recommendations are given as a guide only, based on typical operation conditions.
 Bucket capacity based on ISO 7451, heaped material with a 1:1 angle of repose.

Maximum material density
 D: 2,100 kg/m³ (3,500 lb/yd³)
 C: 1,800 kg/m³ (3,000 lb/yd³)
 B: 1,500 kg/m³ (2,500 lb/yd³)
 A: 1,200 kg/m³ (2,000 lb/yd³)

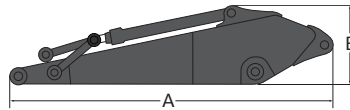
Specifications



DIMENSIONS

Boom	m	ft in	6.5	21'4"	7.0	23'0"
A. Length	mm	ft in	6,780	22'3"	7,280	23'11"
B. Height	mm	ft in	1,910	6'3"	1,785	5'10"
Width	mm	ft in	906	3'0"	906	3'0"
Weight*	kg	lb	5,140	11,330	5,025	11,080

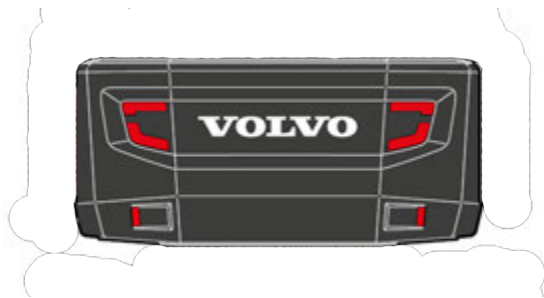
* Includes arm cylinder, piping and pin



DIMENSIONS

Arm	m	ft in	2.55	8'4"	3.0	9'10"	3.35	11'0"	3.9	12'10"
A. Length	mm	ft in	3,805	12'6"	4,270	14'0"	4,620	15'2"	5,170	17'0"
B. Height	mm	ft in	1,260	4'2"	1,260	4'2"	1,260	4'2"	1,260	4'2"
Width	mm	ft in	605	2'0"	605	2'0"	605	2'0"	605	2'0"
Weight*	kg	lb	2,710	5,980	2,920	6,440	2,875	6,340	3,030	6,680

* Includes bucket cylinder, linkage and pin



EC530E and EC550E

Description	Unit	Counterweight	
		Fixed Type	Removal Type
Length	mm, ft in	2974 9'9"	2974 9'9"
Height		1395 4'7"	1395 4'7"
Width		891 2'11"	891 2'11"
Weight	kg, lb	10600 23368	9450 20830 *

*Linkage and cylinder not included

MACHINE WEIGHTS AND GROUND PRESSURE

Description	Shoe width		EC530E with RETRACTABLE undercarriage, 7.0 m (23'0") boom, 3.35 m (11'0") arm, 2,800 kg (6,170 lb) bucket, 10,600 kg (23,370 lb) + 700 kg (1,540 lb) Auxiliary Counterweight				EC550E with WIDE RETRACTABLE undercarriage, 7.0 m (23'0") boom, 3.35 m (11'0") arm, 2,800 kg (6,170 lb) bucket, 10,600 kg (23,370 lb) + 700 kg (1,540 lb) Auxiliary Counterweight			
			Operating weight		Ground pressure		Operating weight		Ground pressure	
	mm	in	kg	lb	kPa	psi	kg	lb	kPa	psi
Triple grouser	600	24	54,680	120,570	93.7	13.6	55,360	122,070	92.6	13.4
	750	30	55,460	122,290	76.0	11.0	56,160	123,830	75.1	10.9
	900	36	56,240	124,010	64.2	9.3	56,960	125,600	63.5	9.2
Double grouser	600	24	54,550	120,280	93.4	13.5	55,230	121,780	92.3	13.4

*Fixed counterweight: 10,600 kg (23,370 lb).

Removable counterweight: 10,600 kg / 23,370 lb counterweight (1,140 kg, 2,514 lb non-removable linkage with removable 9,460 kg, 20,856 lb counterweight)

LIFTING CAPACITY EC530E Retractable undercarriage

Lifting capacity at the arm end without bucket.

For lifting capacity including bucket, simply subtract actual weight of the direct fit bucket or the bucket with quick coupler from the following values.

	Lifting Point	1.5 m, 5 ft		3.0 m, 10 ft		4.5 m, 15 ft		6.0 m, 20 ft		7.5 m, 25 ft		9.0 m, 30 ft		10.5 m, 35 ft		Max. reach					
		Along UC	Across UC	Along UC	Across UC	Along UC	Across UC	Along UC	Across UC	Along UC	Across UC	Along UC	Across UC	Along UC	Across UC	Along UC	Across UC	Max.			
Boom: 6.5m (21'4") Arm: 2.55m (8'4") Shoe: 900mm (36") CWT: 10,600kg (23,370 lb)	9.0 m	kg															*13,710	*13,710	6.1 m		
	30 ft	lb																*30,225	*30,225	19.9 ft	
	7.5 m	kg																*12,460	*12,460	7.4 m	
	25 ft	lb																	*27,470	*27,470	24.2 ft
	6 m	kg							*15,460	*15,460	*14,090	12,750							*12,040	10,930	8.2 m
	20 ft	lb							*34,083	*34,083	*31,063	28,109							*26,544	24,096	27.0 ft
	4.5 m	kg					*23,390	*23,390	*17,640	17,310	*15,010	12,400							*12,100	9,780	8.7 m
	15 ft	lb					*51,566	*51,566	*38,889	38,162	*33,091	27,337							*26,676	21,561	28.7 ft
	3 m	kg							*19,980	16,470	*16,180	11,980							*12,560	9,230	9.0 m
	10 ft	lb							*44,048	36,310	*35,671	26,411							*27,690	20,349	29.4 ft
	1.5 m	kg					*18,660	*18,660	*21,670	15,860	*17,140	11,640							*13,500	9,140	8.9 m
	5 ft	lb					*41,138	*41,138	*47,774	34,965	*37,787	25,662							*29,762	20,150	29.3 ft
	0 m	kg					*28,330	23,930	*22,260	15,570	*17,520	11,450							*14,590	9,500	8.6 m
	0 ft	lb					*62,457	52,757	*49,075	34,326	*38,625	25,243							32,165	20,944	28.3 ft
	-1.5 m	kg			*21,630	*21,630	*28,310	24,070	*21,610	15,560	*16,880	11,450							*15,260	10,490	8.0 m
	-5 ft	lb			*47,686	*47,686	*62,413	53,065	*47,642	34,304	*37,214	25,243							*33,643	23,126	26.4 ft
-3 m	kg			*32,180	*32,180	*25,040	24,470	*19,280	15,820									*15,320	12,660	7.1 m	
-10 ft	lb			*70,945	*70,945	*55,204	53,947	*42,505	34,877									*33,775	27,910	23.3 ft	
Boom: 6.5m (21'4") Arm: 3.0m (9'10") Shoe: 900mm (36") CWT: 10,600kg (23,370 lb)	9.0 m	kg																*11,410	*11,410	6.6 m	
	30 ft	lb																	*25,155	*25,155	21.6 ft
	7.5 m	kg									*12,870	*12,870							*10,570	*10,570	7.8 m
	25 ft	lb									*28,373	*28,373							*23,303	*23,303	25.7 ft
	6 m	kg									*13,210	12,820							*10,290	10,160	8.6 m
	20 ft	lb									*29,123	28,263							*22,686	22,399	28.3 ft
	4.5 m	kg					*21,510	*21,510	*16,610	*16,610	*14,260	12,420	*11,970	9,320					*10,400	9,140	9.1 m
	15 ft	lb					*47,421	*47,421	*36,619	*36,619	*31,438	27,381	*26,389	20,547					*22,928	20,150	29.9 ft
	3 m	kg					*26,640	25,160	*19,080	16,510	*15,540	11,950	*13,620	9,120					*10,850	8,640	9.3 m
	10 ft	lb					*58,731	55,468	*42,064	36,398	*34,260	26,345	*30,027	20,106					*23,920	19,048	30.6 ft
	1.5 m	kg					*25,960	24,010	*21,030	15,810	*16,660	11,550	13,700	8,920					*11,670	8,530	9.3 m
	5 ft	lb					*57,232	52,933	*46,363	34,855	*36,729	25,463	30,203	19,665					*25,728	18,805	30.5 ft
	0 m	kg					*30,000	23,660	*21,960	15,420	*17,270	11,300	*13,240	8,830					*13,090	8,820	9.0 m
	0 ft	lb					*66,139	52,161	*48,413	33,995	*38,074	24,912	*29,189	19,467					*28,858	19,445	29.5 ft
	-1.5 m	kg			*21,810	*21,810	*28,870	23,700	*21,720	15,320	*17,020	11,240							*14,580	9,630	8.4 m
	-5 ft	lb			*48,083	*48,083	*63,647	52,249	*47,884	33,775	*37,523	24,780							*32,143	21,230	27.7 ft
-3 m	kg			*35,110	*35,110	*26,170	24,030	*19,990	15,500	*15,060	11,460							*14,890	11,370	7.5 m	
-10 ft	lb			*77,404	*77,404	*57,695	52,977	*44,070	34,172	*33,202	25,265							*32,827	25,067	24.8 ft	
-4.5 m	kg					*20,920	*20,920	*15,290	*15,290									*14,610	*14,610	6.2 m	
-15 ft	lb					*46,121	*46,121	*33,709	*33,709									*32,209	*32,209	20.2 ft	
Boom: 7.0m (23'0") Arm: 2.55m (8'4") Shoe: 900mm (36") CWT: 10,600kg (23,370 lb)	7.5 m	kg									*13,100	12,940						*12,630	11,550	8.0 m	
	25 ft	lb									*28,881	28,528							*27,844	25,463	26.3 ft
	6 m	kg									*13,640	12,700							*12,280	9,810	8.8 m
	20 ft	lb									*30,071	27,999							*27,073	21,627	28.9 ft
	4.5 m	kg							*17,810	16,990	*14,760	12,270	*13,250	9,310					*12,350	8,880	9.3 m
	15 ft	lb							*39,264	37,456	*32,540	27,051	*29,211	20,525					*27,227	19,577	30.4 ft
	3 m	kg							*20,160	16,120	*16,000	11,820	*13,770	9,100					*12,790	8,420	9.5 m
	10 ft	lb							*44,445	35,538	*35,274	26,059	*30,358	20,062					*28,197	18,563	31.1 ft
	1.5 m	kg							*21,670	15,550	*16,970	11,460	13,670	8,920					12,740	8,340	9.4 m
	5 ft	lb							*47,774	34,282	*37,412	25,265	30,137	19,665					28,087	18,387	31.0 ft
	0 m	kg					*16,090	*16,090	*22,070	15,320	*17,370	11,270	13,580	8,840					13,240	8,630	9.2 m
	0 ft	lb					*35,472	*35,472	*48,656	33,775	*38,294	24,846	29,939	19,489					29,189	19,026	30.1 ft
	-1.5 m	kg					*27,490	23,810	*21,410	15,320	*16,940	11,250							*14,120	9,410	8.6 m
	-5 ft	lb					*60,605	52,492	*47,201	33,775	*37,346	24,802							*31,129	20,745	28.3 ft
	-3 m	kg			*30,460	*30,460	*24,710	24,170	*19,500	15,550	*15,020	11,480							*14,180	11,050	7.7 m
	-10 ft	lb			*67,153	*67,153	*54,476	53,286	*42,990	34,282	*33,113	25,309							*31,262	24,361	25.4 ft
-4.5 m	kg			*24,240	*24,240	*19,790	*19,790	*15,120	*15,120									*13,550	*13,550	6.4 m	
-15 ft	lb			*53,440	*53,440	*43,629	*43,629	*33,334	*33,334									*29,873	*29,873	21.0 ft	

Notes: 1. Machine in "Fine Mode-F" (Power Boost) for lifting capacities. 2. The above loads are in compliance with SAE J1097 and ISO 10567 Hydraulic Excavator Lifting Capacity Standards. 3. Rated loads do not exceed 87% of hydraulic lifting capacity or 75% of tipping load. 4. Rated loads marked with an asterisk (*) are limited by hydraulic capacity rather than tipping load.

Specifications

LIFTING CAPACITY EC530E Retractable undercarriage

Lifting capacity at the arm end without bucket.

For lifting capacity including bucket, simply subtract actual weight of the direct fit bucket or the bucket with quick coupler from the following values.

	Lifting Point	1.5 m, 5 ft		3.0 m, 10 ft		4.5 m, 15 ft		6.0 m, 20 ft		7.5 m, 25 ft		9.0 m, 30 ft		10.5 m, 35 ft		Max. reach																
		Along UC	Across UC	Along UC	Across UC	Along UC	Across UC	Along UC	Across UC	Along UC	Across UC	Along UC	Across UC	Along UC	Across UC	Along UC	Across UC	Max.														
		kg	lb	kg	lb	kg	lb	kg	lb	kg	lb	kg	lb	kg	lb	kg	lb	kg	lb													
Boom: 7.0m (23'0") Arm: 3.0m (9'10") Shoe: 900mm (36") CWT: 10,600kg (23,370 lb)	7.5 m																*10,710	10,640	8.4 m													
	25 ft																*23,611	23,457	27.7 ft													
	6 m																*10,510	9,140	9.2 m													
	20 ft																*23,171	20,150	30.1 ft													
	4.5 m																*10,630	8,300	9.6 m													
	15 ft																*23,435	18,298	31.6 ft													
	3 m																*11,050	7,880	9.8 m													
	10 ft																*24,361	17,372	32.3 ft													
	1.5 m																*11,830	7,790	9.8 m													
	5 ft																*26,081	17,174	32.2 ft													
	0 m																12,350	8,020	9.5 m													
	0 ft																27,227	17,681	31.3 ft													
	-1.5 m																13,400	8,670	9.0 m													
	-5 ft																29,542	19,114	29.6 ft													
	-3 m																*13,730	10,010	8.2 m													
	-10 ft																*30,269	22,068	26.9 ft													
	-4.5 m																*13,570	12,910	6.9 m													
	-15 ft																*29,917	28,462	22.7 ft													
Boom: 7.0m (23'0") Arm: 3.35m (11'0") Shoe: 900mm (36") CWT: 10,600kg (23,370 lb)	7.5 m																*9,400	*9,400	8.8 m													
	25 ft																*20,723	*20,723	28.9 ft													
	6 m																*9,230	8,690	9.5 m													
	20 ft																*20,349	19,158	31.3 ft													
	4.5 m																*9,320	7,940	10.0 m													
	15 ft																*20,547	17,505	32.7 ft													
	3 m																*9,670	7,560	10.2 m													
	10 ft																*21,319	16,667	33.4 ft													
	1.5 m																*10,320	7,470	10.1 m													
	5 ft																*22,752	16,469	33.3 ft													
	0 m																*11,370	7,670	9.9 m													
	0 ft																*25,067	16,909	32.4 ft													
	-1.5 m																12,680	8,230	9.4 m													
	-5 ft																27,955	18,144	30.8 ft													
	-3 m																*13,360	9,380	8.6 m													
	-10 ft																*29,454	20,679	28.1 ft													
	-4.5 m																*13,390	11,750	7.4 m													
	-15 ft																*29,520	25,904	24.2 ft													
-6 m																*12,290	*12,290	5.6 m														
-20 ft																*27,095	*27,095	18.2 ft														
Boom: 7.0m (23'0") Arm: 3.9m (12'10") Shoe: 900mm (36") CWT: 10,600kg (23,370 lb)	9.0 m																*7,930	*7,930	8.4 m													
	30 ft																*17,483	*17,483	27.6 ft													
	7.5 m																*9,860	9,850	9.4 m													
	25 ft																*21,738	21,716	30.8 ft													
	6 m																*7,410	*7,410	10.1 m													
	20 ft																*24,052	21,429	33.0 ft													
	4.5 m																*16,336	*16,336	33.0 ft													
	15 ft																*7,490	7,350	10.5 m													
	3 m																*28,263	27,690	20,856													
	10 ft																*16,513	16,204	34.4 ft													
	1.5 m																*24,690	*24,690	*17,710	16,610	14,350	12,000	*12,450	9,150	*9,520	7,200	*7,750	7,010	10.7 m			
	5 ft																*54,432	*54,432	*39,044	36,619	*31,636	26,455	*27,448	20,172	*20,988	15,873	*17,086	15,454	35.0 ft			
	0 m																*21,740	*21,740	*20,000	15,760	*15,740	11,510	*13,270	8,860	*9,960	7,060	*8,250	6,910	10.6 m			
	0 ft																*47,928	*47,928	*44,092	34,745	*34,701	25,375	*29,255	19,533	*21,958	15,565	*18,188	15,234	34.9 ft			
	-1.5 m																*22,680	*22,680	*21,370	15,240	*16,710	11,150	13,400	8,650			*9,030	7,070	10.4 m			
	-5 ft																*50,001	*50,001	*47,113	33,598	*36,839	24,582	29,542	19,070			*19,908	15,587	34.1 ft			
	-3 m																*11,000	*11,000	*15,430	*15,430	*28,930	23,190	*21,720	15,010	*17,040	10,970	13,290	8,550		*10,270	7,520	9.9 m
	-10 ft																*24,251	*24,251	*34,017	*34,017	*63,780	51,125	*47,884	33,091	*37,567	24,185	29,299	18,850		*22,641	16,579	32.5 ft
-4.5 m																*18,010	*18,010	*23,640	*23,640	*27,750	23,360	*21,000	15,030	*16,520	10,970	*13,060	8,620		*12,390	8,430	9.2 m	
-15 ft																*39,705	*39,705	*52,117	*52,117	*61,178	51,500	*46,297	33,135	*36,420	24,185	*28,792	19,004		*27,315	18,585	30.1 ft	
-20 ft																*26,130	*26,130	*33,650	*33,650	*24,650	23,790	*18,910	15,280	*14,560	11,200			*12,890	10,220	8.1 m		
																*57,607	*57,607	*74,185	*74,185	*54,344	52,448	*41,689	33,687	*32,099	24,692			*28,418	22,531	26.5 ft		
																*25,190	*25,190	*19,020	*19,020	*14,120	*14,120							*12,560	*12,560	6.4 m		
																*55,534	*55,534	*41,932	*41,932	*31,129	*31,129							*27,690	*27,690	21.1 ft		

Notes: 1. Machine in "Fine Mode-F" (Power Boost) for lifting capacities. 2. The above loads are in compliance with SAE J1097 and ISO 10567 Hydraulic Excavator Lifting Capacity Standards. 3. Rated loads do not exceed 87% of hydraulic lifting capacity or 75% of tipping load. 4. Rated loads marked with an asterisk (*) are limited by hydraulic capacity rather than tipping load.

Specifications

LIFTING CAPACITY EC530E Retractable undercarriage

Lifting capacity at the arm end without bucket.

For lifting capacity including bucket, simply subtract actual weight of the direct fit bucket or the bucket with quick coupler from the following values.

	Lifting Point	1.5 m, 5 ft		3.0 m, 10 ft		4.5 m, 15 ft		6.0 m, 20 ft		7.5 m, 25 ft		9.0 m, 30 ft		10.5 m, 35 ft		Max. reach			
		Along UC	Across UC	Along UC	Across UC	Along UC	Across UC	Along UC	Across UC	Along UC	Across UC	Along UC	Across UC	Along UC	Across UC	Along UC	Across UC	Max.	
Boom: 7.0m (23'0") Arm: 3.0m (9'10") Shoe: 900mm (36") CWT: 10,600kg (23,370 lb) + 700kg (1,540 lb)	7.5 m kg																*10,710	*10,710	8.4 m
	25 ft lb																*23,611	*23,611	27.7 ft
	6 m kg									*12,850	*12,850	*12,170	9,830				*10,510	9,480	9.2 m
	20 ft lb									*28,329	*28,329	*26,830	21,671				*23,171	20,900	30.1 ft
	4.5 m kg					*22,740	*22,740	*16,800	*16,800	*14,050	12,710	*12,600	9,640				*10,630	8,620	9.6 m
	15 ft lb					*50,133	*50,133	*37,038	*37,038	*30,975	28,021	*27,778	21,253				*23,435	19,004	31.6 ft
	3 m kg							*19,280	16,730	*15,390	12,210	*13,260	9,380				*11,050	8,200	9.8 m
	10 ft lb							*42,505	36,883	*33,929	26,918	*29,233	20,679				*24,361	18,078	32.3 ft
	1.5 m kg							*21,070	16,060	*16,510	11,800	*13,850	9,160				*11,830	8,100	9.8 m
	5 ft lb							*46,451	35,406	*36,398	26,015	*30,534	20,194				*26,081	17,857	32.2 ft
	0 m kg					*19,930	*19,930	*21,810	15,720	*17,100	11,550	13,850	9,020				12,750	8,350	9.5 m
	0 ft lb					*43,938	*43,938	*48,083	34,657	*37,699	25,463	30,534	19,886				28,109	18,409	31.3 ft
	-1.5 m kg			*15,900	*15,900	*28,200	24,260	*21,490	15,650	*16,960	11,480	*13,550	9,040				*13,490	9,020	9.0 m
	-5 ft lb			*35,053	*35,053	*62,170	53,484	*47,377	34,502	*37,390	25,309	*29,873	19,930				*29,470	19,886	29.6 ft
	-3 m kg			*28,620	*28,620	*25,770	24,580	*20,020	15,810	*15,680	11,610						*13,730	10,400	8.2 m
	-10 ft lb			*63,096	*63,096	*56,813	54,190	*44,136	34,855	*34,568	25,596						*30,269	22,928	26.9 ft
	-4.5 m kg			*27,510	*27,510	*21,530	*21,530	*16,670	16,260								*13,570	13,390	6.9 m
	-15 ft lb			*60,649	*60,649	*47,465	*47,465	*36,751	35,847								*29,917	29,520	22.7 ft
Boom: 7.0m (23'0") Arm: 3.35m (11'0") Shoe: 900mm (36") CWT: 10,600kg (23,370 lb) + 700kg (1,540 lb)	7.5 m kg																*9,400	*9,400	8.8 m
	25 ft lb																*20,723	*20,723	28.9 ft
	6 m kg											*11,710	9,960				*9,230	9,020	9.5 m
	20 ft lb											*25,816	21,958				*20,349	19,886	31.3 ft
	4.5 m kg							*16,180	*16,180	*13,650	12,860	*12,270	9,740				*9,320	8,250	10.0 m
	15 ft lb							*35,671	*35,671	*30,093	28,351	*27,051	21,473				*20,547	18,188	32.7 ft
	3 m kg					*22,850	*22,850	*18,780	16,970	*15,070	12,350	*13,020	9,470				*9,670	7,860	10.2 m
	10 ft lb					*50,376	*50,376	*41,403	37,412	*33,224	27,227	*28,704	20,878				*21,319	17,328	33.4 ft
	1.5 m kg					*16,420	*16,420	*20,780	16,240	*16,310	11,910	*13,700	9,230				*10,320	7,770	10.1 m
	5 ft lb					*36,200	*36,200	*45,812	35,803	*35,957	26,257	*30,203	20,349				*22,752	17,130	33.3 ft
	0 m kg					*20,970	*20,970	*21,780	15,830	*17,060	11,620	13,880	9,060				*11,370	7,980	9.9 m
	0 ft lb					*46,231	*46,231	*48,017	34,899	*37,611	25,618	30,600	19,974				*25,067	17,593	32.4 ft
	-1.5 m kg			*15,720	*15,720	*28,880	24,290	*21,730	15,710	*17,110	11,510	13,840	9,020				*13,060	8,560	9.4 m
	-5 ft lb			*34,657	*34,657	*63,669	53,550	*47,906	34,635	*37,721	25,375	30,512	19,886				*28,792	18,872	30.8 ft
	-3 m kg	*20,300	*20,300	*26,320	*26,320	*26,750	24,550	*20,560	15,810	*16,160	11,580						*13,360	9,750	8.6 m
	-10 ft lb	*44,754	*44,754	*58,026	*58,026	*58,974	54,123	*45,327	34,855	*35,627	25,529						*29,454	21,495	28.1 ft
	-4.5 m kg			*30,200	*30,200	*22,960	*22,960	*17,760	16,160								*13,390	12,200	7.4 m
	-15 ft lb			*66,580	*66,580	*50,618	*50,618	*39,154	35,627								*29,520	26,896	24.2 ft
-6 m kg					*15,870	*15,870										*12,290	*12,290	5.6 m	
-20 ft lb					*34,987	*34,987										*27,095	*27,095	18.2 ft	
Boom: 7.0m (23'0") Arm: 3.9m (12'10") Shoe: 900mm (36") CWT: 10,600kg (23,370 lb) + 700kg (1,540 lb)	9.0 m kg																*7,930	*7,930	8.4 m
	30 ft lb																*17,483	*17,483	27.6 ft
	7.5 m kg											*9,860	*9,860				*7,530	*7,530	9.4 m
	25 ft lb											*21,738	*21,738				*16,601	*16,601	30.8 ft
	6 m kg											*10,910	10,070				*7,410	*7,410	10.1 m
	20 ft lb											*24,052	22,201				*16,336	*16,336	33.0 ft
	4.5 m kg									*12,820	*12,820	*11,590	9,810				*7,490	*7,490	10.5 m
	15 ft lb									*28,263	*28,263	*25,552	21,627				*16,513	*16,513	34.4 ft
	3 m kg					*24,690	*24,690	*17,710	17,190	*14,350	12,430	*12,450	9,500	*9,520	7,490		*7,750	7,290	10.7 m
	10 ft lb					*54,432	*54,432	*39,044	37,897	*31,636	27,403	*27,448	20,944	*20,988	16,513		*17,086	16,072	35.0 ft
	1.5 m kg					*21,740	*21,740	*20,000	16,340	*15,740	11,940	*13,270	9,210	*9,960	7,350		*8,250	7,200	10.6 m
	5 ft lb					*47,928	*47,928	*44,092	36,023	*34,701	26,323	*29,255	20,305	*21,958	16,204		*18,188	15,873	34.9 ft
	0 m kg					*22,680	*22,680	*21,370	15,820	*16,710	11,590	13,820	9,000				*9,030	7,360	10.4 m
	0 ft lb					*50,001	*50,001	*47,113	34,877	*36,839	25,552	30,468	19,842				*19,908	16,226	34.1 ft
	-1.5 m kg	*11,000	*11,000	*15,430	*15,430	*28,930	24,070	*21,720	15,590	*17,040	11,400	13,710	8,900				*10,270	7,830	9.9 m
	-5 ft lb	*24,251	*24,251	*34,017	*34,017	*63,780	53,065	*47,884	34,370	*37,567	25,133	30,225	19,621				*22,641	17,262	32.5 ft
	-3 m kg	*18,010	*18,010	*23,640	*23,640	*27,750	24,230	*21,000	15,610	*16,520	11,400	*13,060	8,970				*12,390	8,770	9.2 m
	-10 ft lb	*39,705	*39,705	*52,117	*52,117	*61,178	53,418	*46,297	34,414	*36,420	25,133	*28,792	19,775				*27,315	19,335	30.1 ft
-4.5 m kg	*26,130	*26,130	*33,650	*33,650	*24,650	*24,650	*18,910	15,860	*14,560	11,640						*12,890	10,610	8.1 m	
-15 ft lb	*57,607	*57,607	*74,185	*74,185	*54,344	*54,344	*41,689	34,965	*32,099	25,662						*28,418	23,391	26.5 ft	
-6 m kg			*25,190	*25,190	*19,020	*19,020	*14,120	*14,120								*12,560	*12,560	6.4 m	
-20 ft lb			*55,534	*55,534	*41,932	*41,932	*31,129	*31,129								*27,690	*27,690	21.1 ft	

Notes: 1. Machine in "Fine Mode-F" (Power Boost) for lifting capacities. 2. The above loads are in compliance with SAE J1097 and ISO 10567 Hydraulic Excavator Lifting Capacity Standards. 3. Rated loads do not exceed 87% of hydraulic lifting capacity or 75% of tipping load. 4. Rated loads marked with an asterisk (*) are limited by hydraulic capacity rather than tipping load.

LIFTING CAPACITY EC550E Wide retractable undercarriage

Lifting capacity at the arm end without bucket.

For lifting capacity including bucket, simply subtract actual weight of the direct fit bucket or the bucket with quick coupler from the following values.

	Lifting Point	1.5 m, 5 ft		3.0 m, 10 ft		4.5 m, 15 ft		6.0 m, 20 ft		7.5 m, 25 ft		9.0 m, 30 ft		10.5 m, 35 ft		Max. reach				
		Along UC	Across UC	Along UC	Across UC	Along UC	Across UC	Along UC	Across UC	Along UC	Across UC	Along UC	Across UC	Along UC	Across UC	Along UC	Across UC	Max.		
		Boom: 6.5 m (21'4") Arm: 2.55 m (8'4") Shoe: 900 mm (36") CWT: 10,600 kg (23,370 lb)	7.5 m	kg															*12,519	*12,519
25 ft	lb																	*27,600	*27,600	24.0 ft
6.0 m	kg								*15,232	*15,232	*14,002	*14,002						*12,043	*12,043	8.2 m
20 ft	lb								*33,580	*33,580	*30,870	*30,870						*26,550	*26,550	26.9 ft
4.5 m	kg						*22,720	*22,720	*17,300	*17,300	*14,823	14,080						*12,070	11,399	8.7 m
15 ft	lb						*50,090	*50,090	*38,140	*38,140	*32,680	31,040						*26,610	25,130	28.6 ft
3.0 m	kg						*26,925	*26,925	*19,591	18,960	*15,939	13,671						*12,528	10,755	9.0 m
10 ft	lb						*59,360	*59,360	*43,190	41,800	*35,140	30,140						*27,620	23,710	29.4 ft
1.5 m	kg						*20,761	*20,761	*21,278	18,334	*16,874	13,327						*13,467	10,655	8.9 m
5 ft	lb						*45,770	*45,770	*46,910	40,420	*37,200	29,380						*29,690	23,490	29.3 ft
0 m	kg						*29,515	28,236	*21,890	18,026	*17,227	13,131						*14,928	11,099	8.6 m
0 ft	lb						*65,070	62,250	*48,260	39,740	*37,980	28,950						*32,910	24,470	28.3 ft
-1.5 m	kg				*22,326	*22,326	*27,896		*27,896		*16,511	13,154						*15,263	12,292	8.0 m
-5 ft	lb				*49,220	*49,220	*61,500		*61,500		*36,400	29,000						*33,650	27,100	26.3 ft
-3.0 m	kg				*31,747	*31,747	*24,589		*24,589									*15,318	14,955	7.0 m
-10 ft	lb			*69,990	*69,990	*54,210		*54,210									*33,770	32,970	23.1 ft	
Boom: 6.5 m (21'4") Arm: 3.0 m (9'10") Shoe: 900 mm (36") CWT: 10,600 kg (23,370 lb)	7.5 m	kg								*11,884	*11,884						*10,600	*10,600	7.7 m	
	25 ft	lb								*26,200	*26,200							*23,370	*23,370	25.4 ft
	6.0 m	kg								*13,113	*13,113							*10,297	*10,297	8.6 m
	20 ft	lb								*28,910	*28,910							*22,700	*22,700	28.2 ft
	4.5 m	kg					*20,924	*20,924	*16,302	*16,302	*14,075	*14,075						*10,387	*10,387	9.1 m
	15 ft	lb					*46,130	*46,130	*35,940	*35,940	*31,030	*31,030						*22,900	*22,900	29.8 ft
	3.0 m	kg					*25,964	*25,964	*18,711	*18,711	*15,309	13,644	*13,485	10,378				*10,818	10,074	9.3 m
	10 ft	lb					*57,240	*57,240	*41,250	*41,250	*33,750	30,080	*29,730	22,880				*23,850	22,210	30.6 ft
	1.5 m	kg					*28,200	*28,200	*20,643	18,280	*16,397	13,245	*13,912	10,197				*11,653	9,961	9.3 m
	5 ft	lb					*62,170	*62,170	*45,510	40,300	*36,150	29,200	*30,670	22,480				*25,690	21,960	30.5 ft
	0 m	kg					*29,506	27,964	*21,591	17,872	*16,987	12,986						*13,082	10,315	9.0 m
	0 ft	lb					*65,050	61,650	*47,600	39,400	*37,450	28,630						*28,840	22,740	29.5 ft
	-1.5 m	kg			*22,389	*22,389	*28,427	28,000	*21,346	17,772	*16,697	12,932						*14,588	11,299	8.4 m
	-5 ft	lb			*49,360	*49,360	*62,670	61,730	*47,060	39,180	*36,810	28,510						*32,160	24,910	27.7 ft
	-3.0 m	kg			*34,582	*34,582	*25,710	*25,710	*19,577	17,967								*14,896	13,435	7.5 m
-10 ft	lb			*76,240	*76,240	*56,680	*56,680	*43,160	39,610								*32,840	29,620	24.6 ft	
-4.5 m	kg					*20,298	*20,298										*14,560	*14,560	6.1 m	
-15 ft	lb					*44,750	*44,750										*32,100	*32,100	19.9 ft	
Boom: 7.0 m (22'12") Arm: 2.55 m (8'4") Shoe: 900 mm (36") CWT: 10,600 kg (23,370 lb)	7.5 m	kg								*13,109	*13,109						*12,673	*12,673	7.9 m	
	25 ft	lb								*28,900	*28,900							*27,940	*27,940	26.0 ft
	6.0 m	kg								*13,490	*13,490							*12,283	11,462	8.7 m
	20 ft	lb								*29,740	*29,740							*27,080	25,270	28.7 ft
	4.5 m	kg							*17,427	*17,427	*14,538	13,957	*13,163	10,551				*12,333	10,351	9.3 m
	15 ft	lb							*38,420	*38,420	*32,050	30,770	*29,020	23,260				*27,190	22,820	30.4 ft
	3.0 m	kg							*19,736	18,611	*15,740	13,508	*13,608	10,365				*12,764	9,820	9.5 m
	10 ft	lb							*43,510	41,030	*34,700	29,780	*30,000	22,850				*28,140	21,650	31.1 ft
	1.5 m	kg							*21,264	18,017	*16,692	13,145	13,993	10,192				13,345	9,734	9.4 m
	5 ft	lb							*46,880	39,720	*36,800	28,980	30,850	22,470				29,420	21,460	31.0 ft
	0 m	kg					*17,445	*17,445	*21,700	17,754	*17,082	12,946	13,921	10,120				13,866	10,083	9.2 m
	0 ft	lb					*38,460	*38,460	*47,840	39,140	*37,660	28,540	30,690	22,310				30,570	22,230	30.1 ft
	-1.5 m	kg			*14,397	*14,397	*27,143	*27,143	*21,060	17,758	*16,624	12,932						*14,129	11,027	8.6 m
	-5 ft	lb			*31,740	*31,740	*59,840	*59,840	*46,430	39,150	*36,650	28,510						*31,150	24,310	28.2 ft
	-3.0 m	kg			*30,159	*30,159	*24,326	*24,326	*19,114	17,999	*14,501	13,200						*14,179	13,018	7.7 m
-10 ft	lb			*66,490	*66,490	*53,630	*53,630	*42,140	39,680	*31,970	29,100						*31,260	28,700	25.3 ft	
-4.5 m	kg			*23,691	*23,691	*19,255	*19,255	*14,397	*14,397								*13,476	*13,476	6.3 m	
-15 ft	lb			*52,230	*52,230	*42,450	*42,450	*31,740	*31,740								*29,710	*29,710	20.7 ft	

Notes: 1. Machine in "Fine Mode-F" (Power Boost) for lifting capacities. 2. The above loads are in compliance with SAE J1097 and ISO 10567 Hydraulic Excavator Lifting Capacity Standards. 3. Rated loads do not exceed 87% of hydraulic lifting capacity or 75% of tipping load. 4. Rated loads marked with an asterisk (*) are limited by hydraulic capacity rather than tipping load.

Specifications

LIFTING CAPACITY EC550E Wide retractable undercarriage

Lifting capacity at the arm end without bucket.

For lifting capacity including bucket, simply subtract actual weight of the direct fit bucket or the bucket with quick coupler from the following values.

	Lifting Point	1.5 m, 5 ft		3.0 m, 10 ft		4.5 m, 15 ft		6.0 m, 20 ft		7.5 m, 25 ft		9.0 m, 30 ft		10.5 m, 35 ft		Max. reach				
		Along UC	Across UC	Along UC	Across UC	Along UC	Across UC	Along UC	Across UC	Along UC	Across UC	Along UC	Across UC	Along UC	Across UC	Along UC	Across UC	Max.		
Boom: 7.0 m (22'12") Arm: 3.0 m (9'10") Shoe: 900 mm (36") CWT: 10,600 kg (23,370 lb)	7.5 m kg																*10,746	*10,746	8.4 m	
	25 ft lb																	*23,690	*23,690	27.5 ft
	6.0 m kg									*12,710	*12,710	*10,610	*10,610					*10,505	*10,505	9.1 m
	20 ft lb									*28,020	*28,020	*23,390	*23,390					*23,160	*23,160	30.0 ft
	4.5 m kg					*22,040	*22,040	*16,447	*16,447	*13,844	*13,844	*12,492	10,541					*10,605	9,698	9.6 m
	15 ft lb					*48,590	*48,590	*36,260	*36,260	*30,520	*30,520	*27,540	23,240					*23,380	21,380	31.6 ft
	3.0 m kg								*18,879	18,652	*15,136	13,472	*13,100	10,301				*11,022	9,208	9.8 m
	10 ft lb								*41,620	41,120	*33,370	29,700	*28,880	22,710				*24,300	20,300	32.3 ft
	1.5 m kg								*20,666	17,940	*16,230	13,054	*13,644	10,083				*11,802	9,108	9.8 m
	5 ft lb								*45,560	39,550	*35,780	28,780	*30,080	22,230				*26,020	20,080	32.2 ft
	0 m kg						*21,119	*21,119	*21,432	17,581	*16,819	12,796	13,753	9,952				12,946	9,394	9.5 m
	0 ft lb						*46,560	*46,560	*47,250	38,760	*37,080	28,210	30,320	21,940				28,540	20,170	31.3 ft
	-1.5 m kg			*16,393	*16,393	*27,796	27,656	*21,137	17,509	*16,656	12,728							*13,499	10,719	9.0 m
	-5 ft lb			*36,140	*36,140	*61,280	60,970	*46,600	38,600	*36,720	28,060							*29,760	22,440	29.6 ft
	-3.0 m kg			*29,438	*29,438	*25,351	*25,351	*19,641	17,681	*15,286	12,882							*13,739	11,802	8.2 m
	-10 ft lb			*64,900	*64,900	*55,890	*55,890	*43,300	38,980	*33,700	28,400							*30,290	26,020	26.8 ft
	-4.5 m kg			*26,912	*26,912	*21,010	*21,010	*16,130	*16,130									*13,544	*13,544	6.9 m
	-15 ft lb			*59,330	*59,330	*46,320	*46,320	*35,560	*35,560									*29,860	*29,860	22.5 ft
Boom: 7.0 m (22'12") Arm: 3.35 m (10'12") Shoe: 900 mm (36") CWT: 10,600 kg (23,370 lb)	7.5 m kg																*9,430	*9,430	8.7 m	
	25 ft lb																	*20,790	*20,790	28.7 ft
	6.0 m kg									*12,238	*12,238	*11,666	10,850					*9,231	*9,231	9.5 m
	20 ft lb									*26,980	*26,980	*25,720	23,920					*20,350	*20,350	31.2 ft
	4.5 m kg								*15,844	*15,844	*13,440	*13,440	*12,152	10,650				*9,317	9,271	10.0 m
	15 ft lb								*34,930	*34,930	*29,630	*29,630	*26,790	23,480				*20,540	20,440	32.7 ft
	3.0 m kg					*26,009	*26,009	*18,389	*18,389	*14,823	13,608	*12,855	10,387					*9,662	8,827	10.2 m
	10 ft lb					*57,340	*57,340	*40,540	*40,540	*32,680	30,000	*28,340	22,900					*21,300	19,460	33.4 ft
	1.5 m kg					*17,867	*17,867	*20,384	18,126	*16,034	13,163	*13,503	10,147					*10,306	8,727	10.1 m
	5 ft lb					*39,390	*39,390	*44,940	39,960	*35,350	29,020	*29,770	22,370					*22,720	19,240	33.3 ft
	0 m kg					*22,113	*22,113	*21,405	17,699	*16,774	12,868	13,785	9,984					*11,367	8,977	9.9 m
	0 ft lb					*48,750	*48,750	*47,190	39,020	*36,980	28,370	30,390	22,010					*25,060	19,790	32.4 ft
	-1.5 m kg			*16,152	*16,152	*28,445	27,687	*21,369	17,563	*16,810	12,750	*13,549	9,956					*13,063	9,657	9.4 m
	-5 ft lb			*35,610	*35,610	*62,710	61,040	*47,110	38,720	*37,060	28,110	*29,870	21,950					*28,800	21,290	30.7 ft
	-3.0 m kg	*20,648	*20,648	*27,034	*27,034	*26,308	*26,308	*20,176	17,672	*15,803	12,841							*13,367	11,045	8.5 m
	-10 ft lb	*45,520	*45,520	*59,600	*59,600	*58,000	*58,000	*44,480	38,960	*34,840	28,310							*29,470	24,350	28.0 ft
	-4.5 m kg			*29,561	*29,561	*22,444	*22,444	*17,268	*17,268									*13,376	*13,376	7.3 m
	-15 ft lb			*65,170	*65,170	*49,480	*49,480	*38,070	*38,070									*29,490	*29,490	24.0 ft
-6.0 m kg					*14,978	*14,978											*12,115	*12,115	5.4 m	
-20 ft lb					*33,020	*33,020											*26,710	*26,710	17.7 ft	
Boom: 7.0 m (22'12") Arm: 3.9 m (12'10") Shoe: 900 mm (36") CWT: 10,600 kg (23,370 lb)	7.5 m kg											*8,822	*8,822				*7,552	*7,552	9.3 m	
	25 ft lb											*19,450	*19,450				*16,650	*16,650	30.6 ft	
	6.0 m kg											*10,850	*10,850				*7,407	*7,407	10.0 m	
	20 ft lb											*23,920	*23,920				*16,330	*16,330	32.9 ft	
	4.5 m kg									*12,628	*12,628	*11,476	10,718				*7,480	*7,480	10.5 m	
	15 ft lb									*27,840	*27,840	*25,300	23,630				*16,490	*16,490	34.4 ft	
	3.0 m kg					*24,045	*24,045	*17,345	*17,345	*14,111	13,694	*12,292	10,419				*7,743	*7,743	10.7 m	
	10 ft lb					*53,010	*53,010	*38,240	*38,240	*31,110	30,190	*27,100	22,970			*17,130	*17,130	*17,070	*17,070	35.0 ft
	1.5 m kg					*23,446	*23,446	*19,613	18,234	*15,477	13,195	*13,077	10,133					*8,233	8,092	10.6 m
	5 ft lb					*51,690	*51,690	*43,240	40,200	*34,120	29,090	*28,830	22,340					*18,150	17,840	34.9 ft
	0 m kg					*23,827	*23,827	*20,997	17,686	*16,429	12,832	*13,617	9,920					*9,022	8,283	10.4 m
	0 ft lb					*52,530	*52,530	*46,290	38,990	*36,220	28,290	*30,020	21,870					*19,890	18,260	34.1 ft
	-1.5 m kg	*11,140	*11,140	*15,808	*15,808	*28,867	27,465	*21,355	17,445	*16,751	12,646	13,621	9,825					*10,297	8,831	9.9 m
	-5 ft lb	*24,560	*24,560	*34,850	*34,850	*63,640	60,550	*47,080	38,460	*36,930	27,880	30,030	21,660					*22,700	19,470	32.5 ft
	-3.0 m kg	*18,293	*18,293	*24,235	*24,235	*27,284	*27,284	*20,620	17,468	*16,193	12,655							*12,474	9,929	9.1 m
	-10 ft lb	*40,330	*40,330	*53,430	*53,430	*60,150	*60,150	*45,460	38,510	*35,700	27,900							*27,500	21,890	30.0 ft
	-4.5 m kg	*26,658	*26,658	*32,958	*32,958	*24,122	*24,122	*18,457	17,745	*14,061	12,923							*12,896	12,129	8.0 m
	-15 ft lb	*58,770	*58,770	*72,660	*72,660	*53,180	*53,180	*40,690	39,120	*31,000	28,490							*28,430	26,740	26.3 ft
-6.0 m kg			*24,249	*24,249	*18,280	*18,280	*13,281	*13,281									*12,496	*12,496	6.3 m	
-20 ft lb			*53,460	*53,460	*40,300	*40,300	*29,280	*29,280									*27,550	*27,550	20.7 ft	

Notes: 1. Machine in "Fine Mode-F" (Power Boost) for lifting capacities. 2. The above loads are in compliance with SAE J1097 and ISO 10567 Hydraulic Excavator Lifting Capacity Standards. 3. Rated loads do not exceed 87% of hydraulic lifting capacity or 75% of tipping load. 4. Rated loads marked with an asterisk (*) are limited by hydraulic capacity rather than tipping load.

LIFTING CAPACITY EC550E Wide retractable undercarriage

Lifting capacity at the arm end without bucket.

For lifting capacity including bucket, simply subtract actual weight of the direct fit bucket or the bucket with quick coupler from the following values.

	Lifting Point	1.5 m, 5 ft		3.0 m, 10 ft		4.5 m, 15 ft		6.0 m, 20 ft		7.5 m, 25 ft		9.0 m, 30 ft		10.5 m, 35 ft		Max. reach				
		Along UC	Across UC	Along UC	Across UC	Along UC	Across UC	Along UC	Across UC	Along UC	Across UC	Along UC	Across UC	Along UC	Across UC	Along UC	Across UC	Max.		
		Boom : 6.5m (21'4") Arm : 2.55m (8'4") Shoe : 900mm (36") CWT : 10,600kg (23,370 lb) + 700kg (1,540 lb)	9.0 m	kg															*13,710	*13,710
30 ft	lb																	*30,225	*30,225	19.9 ft
7.5 m	kg																	*12,460	*12,460	7.4 m
25 ft	lb																	*27,470	*27,470	24.2 ft
6 m	kg								*15,460	*15,460	*14,090	*14,090						*12,040	*12,040	8.2 m
20 ft	lb								*34,083	*34,083	*31,063	*31,063						*26,544	*26,544	27.0 ft
4.5 m	kg						*23,390	*23,390	*17,640	*17,640	*15,010	14,870						*12,100	11,740	8.7 m
15 ft	lb						*51,566	*51,566	*38,889	*38,889	*33,091	32,783						*26,676	25,882	28.7 ft
3 m	kg								*19,980	*19,980	*16,180	14,440						*12,560	11,120	9.0 m
10 ft	lb								*44,048	*44,048	*35,671	31,835						*27,690	24,515	29.4 ft
1.5 m	kg						*18,660	*18,660	*21,670	19,390	*17,140	14,090						*13,500	11,030	8.9 m
5 ft	lb						*41,138	*41,138	*47,774	42,748	*37,787	31,063						*29,762	24,317	29.3 ft
0 m	kg						*28,330	*28,330	*22,260	19,080	*17,520	13,890						*14,930	11,490	8.6 m
0 ft	lb						*62,457	*62,457	*49,075	42,064	*38,625	30,622						*32,915	25,331	28.3 ft
-1.5 m	kg				*21,630	*21,630	*28,310	*28,310	*21,610	19,070	*16,880	13,900						*15,260	12,690	8.0 m
-5 ft	lb				*47,686	*47,686	*62,413	*62,413	*47,642	42,042	*37,214	30,644						*33,643	27,977	26.4 ft
-3 m	kg				*32,180	*32,180	*25,040	*25,040	*19,280	*19,280								*15,320	*15,320	7.1 m
-10 ft	lb				*70,945	*70,945	*55,204	*55,204	*42,505	*42,505								*33,775	*33,775	23.3 ft
Boom : 6.5m (21'4") Arm : 3.0m (9'10") Shoe : 900mm (36") CWT : 10,600kg (23,370 lb) + 700kg (1,540 lb)	9.0 m	kg															*11,410	*11,410	6.6 m	
	30 ft	lb																*25,155	*25,155	21.6 ft
	7.5 m	kg									*12,870	*12,870						*10,570	*10,570	7.8 m
	25 ft	lb									*28,373	*28,373						*23,303	*23,303	25.7 ft
	6 m	kg									*13,210	*13,210						*10,290	*10,290	8.6 m
	20 ft	lb									*29,123	*29,123						*22,686	*22,686	28.3 ft
	4.5 m	kg					*21,510	*21,510	*16,610	*16,610	*14,260	*14,260	*11,970	11,200				*10,400	*10,400	9.1 m
	15 ft	lb					*47,421	*47,421	*36,619	*36,619	*31,438	*31,438	*26,389	24,692				*22,928	*22,928	29.9 ft
	3 m	kg					*26,640	*26,640	*19,080	*19,080	*15,540	14,420	*13,620	10,990				*10,850	10,420	9.3 m
	10 ft	lb					*58,731	*58,731	*42,064	*42,064	*34,260	31,791	*30,027	24,229				*23,920	22,972	30.6 ft
	1.5 m	kg					*25,960	*25,960	*21,030	19,330	*16,660	14,010	*14,110	10,800				*11,670	10,320	9.3 m
	5 ft	lb					*57,232	*57,232	*46,363	42,615	*36,729	30,887	*31,107	23,810				*25,728	22,752	30.5 ft
	0 m	kg					*30,000	29,700	*21,960	18,930	*17,270	13,750	*13,240	10,690				*13,090	10,690	9.0 m
	0 ft	lb					*66,139	65,477	*48,413	41,733	*38,074	30,314	*29,189	23,567				*28,858	23,567	29.5 ft
	-1.5 m	kg			*21,810	*21,810	*28,870	*28,870	*21,720	18,830	*17,020	13,680						*14,580	11,680	8.4 m
	-5 ft	lb			*48,083	*48,083	*63,647	*63,647	*47,884	41,513	*37,523	30,159						*32,143	25,750	27.7 ft
	-3 m	kg			*35,110	*35,110	*26,170	*26,170	*19,990	19,010	*15,060	13,910						*14,890	13,800	7.5 m
	-10 ft	lb			*77,404	*77,404	*57,695	*57,695	*44,070	41,910	*33,202	30,666						*32,827	30,424	24.8 ft
-4.5 m	kg					*20,920	*20,920	*15,290	*15,290								*14,610	*14,610	6.2 m	
-15 ft	lb					*46,121	*46,121	*33,709	*33,709								*32,209	*32,209	20.2 ft	
Boom : 7.0m (23'0") Arm : 2.55m (8'4") Shoe : 900mm (36") CWT : 10,600kg (23,370 lb) + 700kg (1,540 lb)	7.5 m	kg									*13,100	*13,100					*12,630	*12,630	8.0 m	
	25 ft	lb									*28,881	*28,881						*27,844	*27,844	26.3 ft
	6 m	kg									*13,640	*13,640						*12,280	11,750	8.8 m
	20 ft	lb									*30,071	*30,071						*27,073	25,904	28.9 ft
	4.5 m	kg							*17,810	*17,810	*14,760	14,740	*13,250	11,180				*12,350	10,670	9.3 m
	15 ft	lb							*39,264	*39,264	*32,540	32,496	*29,211	24,648				*27,227	23,523	30.4 ft
	3 m	kg							*20,160	19,650	*16,000	14,270	*13,770	10,970				*12,790	10,160	9.5 m
	10 ft	lb							*44,445	43,321	*35,274	31,460	*30,358	24,185				*28,197	22,399	31.1 ft
	1.5 m	kg							*21,670	19,060	*16,970	13,900	*14,210	10,790				*13,580	10,080	9.4 m
	5 ft	lb							*47,774	42,020	*37,412	30,644	*31,328	23,788				*29,939	22,223	31.0 ft
	0 m	kg					*16,090	*16,090	*22,070	18,800	*17,370	13,700	*14,210	10,700				*13,870	10,450	9.2 m
	0 ft	lb					*35,472	*35,472	*48,656	41,447	*38,294	30,203	*31,328	23,589				*30,578	23,038	30.1 ft
	-1.5 m	kg					*27,490	*27,490	*21,410	18,810	*16,940	13,680						*14,120	11,390	8.6 m
	-5 ft	lb					*60,605	*60,605	*47,201	41,469	*37,346	30,159						*31,129	25,111	28.3 ft
	-3 m	kg			*30,460	*30,460	*24,710	*24,710	*19,500	19,050	*15,020	13,920						*14,180	13,380	7.7 m
	-10 ft	lb			*67,153	*67,153	*54,476	*54,476	*42,990	41,998	*33,113	30,688						*31,262	29,498	25.4 ft
	-4.5 m	kg			*24,240	*24,240	*19,790	*19,790	*15,120	*15,120								*13,550	*13,550	6.4 m
	-15 ft	lb			*53,440	*53,440	*43,629	*43,629	*33,334	*33,334								*29,873	*29,873	21.0 ft

Notes: 1. Machine in "Fine Mode-F" (Power Boost) for lifting capacities. 2. The above loads are in compliance with SAE J1097 and ISO 10567 Hydraulic Excavator Lifting Capacity Standards. 3. Rated loads do not exceed 87% of hydraulic lifting capacity or 75% of tipping load. 4. Rated loads marked with an asterisk (*) are limited by hydraulic capacity rather than tipping load.

Specifications

LIFTING CAPACITY EC550E Wide retractable undercarriage

Lifting capacity at the arm end without bucket.

For lifting capacity including bucket, simply subtract actual weight of the direct fit bucket or the bucket with quick coupler from the following values.

	Lifting Point	1.5 m, 5 ft		3.0 m, 10 ft		4.5 m, 15 ft		6.0 m, 20 ft		7.5 m, 25 ft		9.0 m, 30 ft		10.5 m, 35 ft		Max. reach				
		Along UC	Across UC	Along UC	Across UC	Along UC	Across UC	Along UC	Across UC	Along UC	Across UC	Along UC	Across UC	Along UC	Across UC	Along UC	Across UC	Max.		
Boom : 7.0m (23'0") Arm : 3.0m (9'10") Shoe : 900mm (36") CWT : 10,600kg (23,370 lb) + 700kg (1,540 lb)	7.5 m kg																*10,710	*10,710	8.4 m	
	25 ft lb																*23,611	*23,611	27.7 ft	
	6 m kg									*12,850	*12,850	*12,170	11,360				*10,510	*10,510	9.2 m	
	20 ft lb									*28,329	*28,329	*26,830	25,044				*23,171	*23,171	30.1 ft	
	4.5 m kg					*22,740	*22,740	*16,800	*16,800	*14,050	*14,050	*12,600	11,170				*10,630	10,000	9.6 m	
	15 ft lb					*50,133	*50,133	*37,038	*37,038	*30,975	*30,975	*27,778	24,626				*23,435	22,046	31.6 ft	
	3 m kg							*19,280	*19,280	*15,390	14,240	*13,260	10,910				*11,050	9,530	9.8 m	
	10 ft lb							*42,505	*42,505	*33,929	31,394	*29,233	24,052				*24,361	21,010	32.3 ft	
	1.5 m kg								*21,070	18,980	*16,510	13,810	*13,850	10,680				*11,830	9,440	9.8 m
	5 ft lb								*46,451	41,844	*36,398	30,446	*30,534	23,545				*26,081	20,812	32.2 ft
	0 m kg							*19,930	*19,930	*21,810	18,630	*17,100	13,550	*14,080	10,540			*13,110	9,740	9.5 m
	0 ft lb							*43,938	*43,938	*48,083	41,072	*37,699	29,873	*31,041	23,237			*28,903	21,473	31.3 ft
	-1.5 m kg			*15,900	*15,900	*28,200	*28,200	*21,490	18,560	*16,960	13,470	*13,550	10,560				*13,490	10,530	9.0 m	
	-5 ft lb			*35,053	*35,053	*62,170	*62,170	*47,377	40,918	*37,390	29,696	*29,873	23,281				*29,470	23,215	29.6 ft	
	-3 m kg			*28,620	*28,620	*25,770	*25,770	*20,020	18,730	*15,680	13,620						*13,730	12,150	8.2 m	
	-10 ft lb			*63,096	*63,096	*56,813	*56,813	*44,136	41,293	*34,568	30,027						*30,269	26,786	26.9 ft	
	-4.5 m kg			*27,510	*27,510	*21,530	*21,530	*16,670	*16,670								*13,570	*13,570	6.9 m	
-15 ft lb			*60,649	*60,649	*47,465	*47,465	*36,751	*36,751								*29,917	*29,917	22.7 ft		
Boom : 7.0m (23'0") Arm : 3.35m (11'0") Shoe : 900mm (36") CWT : 10,600kg (23,370 lb) + 700kg (1,540 lb)	7.5 m kg																*9,400	*9,400	8.8 m	
	25 ft lb																*20,723	*20,723	28.9 ft	
	6 m kg											*11,710	11,500				*9,230	*9,230	9.5 m	
	20 ft lb											*25,816	25,353				*20,349	*20,349	31.3 ft	
	4.5 m kg							*16,180	*16,180	*13,650	*13,650	*12,270	11,280				*9,320	*9,320	10.0 m	
	15 ft lb							*35,671	*35,671	*30,093	*30,093	*27,051	24,868				*20,547	*20,547	32.7 ft	
	3 m kg					*22,850	*22,850	*18,780	*18,780	*15,070	14,380	*13,020	11,000				*9,670	9,140	10.2 m	
	10 ft lb					*50,376	*50,376	*41,403	*41,403	*33,224	31,702	*28,704	24,251				*21,319	20,150	33.4 ft	
	1.5 m kg					*16,420	*16,420	*20,780	19,170	*16,310	13,920	*13,700	10,740				*10,320	9,050	10.1 m	
	5 ft lb					*36,200	*36,200	*45,812	42,263	*35,957	30,688	*30,203	23,678				*22,752	19,952	33.3 ft	
	0 m kg					*20,970	*20,970	*21,780	18,750	*17,060	13,620	*14,080	10,570				*11,370	9,300	9.9 m	
	0 ft lb					*46,231	*46,231	*48,017	41,337	*37,611	30,027	*31,041	23,303				*25,067	20,503	32.4 ft	
	-1.5 m kg			*15,720	*15,720	*28,880	*28,880	*21,730	18,610	*17,110	13,500	*13,850	10,530				*13,060	9,990	9.4 m	
	-5 ft lb			*34,657	*34,657	*63,669	*63,669	*47,906	41,028	*37,721	29,762	*30,534	23,215				*28,792	22,024	30.8 ft	
	-3 m kg	*20,300	*20,300	*26,320	*26,320	*26,750	*26,750	*20,560	18,720	*16,160	13,580						*13,360	11,380	8.6 m	
	-10 ft lb	*44,754	*44,754	*58,026	*58,026	*58,974	*58,974	*45,327	41,270	*35,627	29,939						*29,454	25,089	28.1 ft	
	-4.5 m kg			*30,200	*30,200	*22,960	*22,960	*17,760	*17,760								*13,390	*13,390	7.4 m	
-15 ft lb			*66,580	*66,580	*50,618	*50,618	*39,154	*39,154								*29,520	*29,520	24.2 ft		
-6 m kg					*15,870	*15,870										*12,290	*12,290	5.6 m		
-20 ft lb					*34,987	*34,987										*27,095	*27,095	18.2 ft		
Boom : 7.0m (23'0") Arm : 3.9m (12'10") Shoe : 900mm (36") CWT : 10,600kg (23,370 lb)+ 700kg (1,540 lb)	9.0 m kg																*7,930	*7,930	8.4 m	
	30 ft lb																*17,483	*17,483	27.6 ft	
	7.5 m kg											*9,860	*9,860				*7,530	*7,530	9.4 m	
	25 ft lb											*21,738	*21,738				*16,601	*16,601	30.8 ft	
	6 m kg											*10,910	*10,910				*7,410	*7,410	10.1 m	
	20 ft lb											*24,052	*24,052				*16,336	*16,336	33.0 ft	
	4.5 m kg									*12,820	*12,820	*11,590	11,350				*7,490	*7,490	10.5 m	
	15 ft lb									*28,263	*28,263	*25,552	25,022				*16,513	*16,513	34.4 ft	
	3 m kg					*24,690	*24,690	*17,710	*17,710	*14,350	*14,350	*12,450	11,030	*9,520	8,710		*7,750	*7,750	10.7 m	
	10 ft lb					*54,432	*54,432	*39,044	*39,044	*31,636	*31,636	*27,448	24,317	*20,988	19,202		*17,086	*17,086	35.0 ft	
	1.5 m kg					*21,740	*21,740	*20,000	19,290	*15,740	13,960	*13,270	10,730	*9,960	8,560		*8,250	*8,250	10.6 m	
	5 ft lb					*47,928	*47,928	*44,092	42,527	*34,701	30,776	*29,255	23,656	*21,958	18,872		*18,188	*18,188	34.9 ft	
	0 m kg					*22,680	*22,680	*21,370	18,730	*16,710	13,590	*13,830	10,510				*9,030	8,590	10.4 m	
	0 ft lb					*50,001	*50,001	*47,113	41,293	*36,839	29,961	*30,490	23,171				*19,908	18,938	34.1 ft	
	-1.5 m kg	*11,000	*11,000	*15,430	*15,430	*28,930	*28,930	*21,720	18,500	*17,040	13,400	*13,920	10,410				*10,270	9,150	9.9 m	
	-5 ft lb	*24,251	*24,251	*34,017	*34,017	*63,780	*63,780	*47,884	40,785	*37,567	29,542	*30,688	22,950				*22,641	20,172	32.5 ft	
	-3 m kg	*18,010	*18,010	*23,640	*23,640	*27,750	*27,750	*21,370	18,520	*16,520	13,400	*13,060	10,480				*12,390	10,240	9.2 m	
-10 ft lb	*39,705	*39,705	*52,117	*52,117	*61,178	*61,178	*46,297	40,830	*36,420	29,542	*28,792	23,104				*27,315	22,575	30.1 ft		
-4.5 m kg	*26,130	*26,130	*33,650	*33,650	*24,650	*24,650	*18,910	18,780	*14,560	13,640						*12,890	12,410	8.1 m		
-15 ft lb	*57,607	*57,607	*74,185	*74,185	*54,344	*54,344	*41,689	41,403	*32,099	30,071						*28,418	27,359	26.5 ft		
-6 m kg			*25,190	*25,190	*19,020	*19,020	*14,120	*14,120								*12,560	*12,560	6.4 m		
-20 ft lb			*55,534	*55,534	*41,932	*41,932	*31,129	*31,129								*27,690	*27,690	21.1 ft		

Notes: 1. Machine in "Fine Mode-F" (Power Boost) for lifting capacities. 2. The above loads are in compliance with SAE J1097 and ISO 10567 Hydraulic Excavator Lifting Capacity Standards. 3. Rated loads do not exceed 87% of hydraulic lifting capacity or 75% of tipping load. 4. Rated loads marked with an asterisk (*) are limited by hydraulic capacity rather than tipping load.

Equipment

STANDARD EQUIPMENT			
	EC530E	EC550E	
Engine			
Turbocharged, 4 stroke diesel engine with water cooling, direct injection and charged air cooler that meets Tier 4f requirements	•	•	
Air filter with indicator	•	•	
Air intake heater	•	•	
Cyclone pre-cleaner	•	•	
Electric engine shut-off	•	•	
Alternator, 80 A	•	•	
1,000hr engine oil and engine oil filter change intervals	•	•	
Block heater: 120 V	•	•	
Water separator with heater	•	•	
Delayed engine Shutdown	•	•	
Electric / Electronic control system			
Advanced mode control system	•	•	
Self-diagnostic system	•	•	
Machine status indication	•	•	
Engine speed sensing power control	•	•	
Automatic idling system	•	•	
One-touch power boost	•	•	
Safety stop/start function	•	•	
Adjustable LCD color monitor	•	•	
Master electrical disconnect switch with LOTO bracket	•	•	
Engine restart prevention circuit	•	•	
High-capacity halogen lights:	•	•	
- Deck 2, Cab 3, Counterweight 1	•	•	
- Boom 4	•	•	
Batteries, 2 x 12 V / 200 Ah	•	•	
Start motor, 24 V / 7 kW	•	•	
Dig Assist Start	•	•	
Travel alarm	•	•	
Frame			
3-point right-hand side access	•	•	
Full height, foldable handrail and guard rail	•	•	
Tool storage area	•	•	
Punched metal anti-slip plates	•	•	
Undercover (heavy-duty)	•	•	
Cabin entrance, bolted on	•	•	
Fixed counterweight	•	•	
Undercarriage			
Retractable lower frame	•	–	
Retractable lower frame, wide width	–	•	
Undercover (heavy-duty)	•	•	
Track adjusters	•	•	
Greased and sealed track link	•	•	
Standard Track Guard	•	•	

STANDARD EQUIPMENT			
	EC530E	EC550E	
Hydraulic system			
New electro-hydraulic system with no pilot lines	•	•	
Overload warning device	•	•	
2-pump flow bucket circuit	•	•	
Swing anti-rebound valves	•	•	
Multi-stage filtering system	•	•	
Cylinder cushioning	•	•	
Cylinder contamination seals	•	•	
Boom/Swing and Boom/Travel priorities	•	•	
Automatic two-speed travel motors	•	•	
Hydraulic oil, ISO VG 46	•	•	
Automatic hydraulic oil warm-up	•	•	
Boom and arm bouncing reduction	•	•	
Boom float function	•	•	
High pressure line for hammer and shear (X1):	•	•	
- 2 pump flow	•	•	
- Variable flow and pressure pre-setting	•	•	
Cab and interior			
ROPS (ISO12117-2) certified cab	•	•	
Silicon oil and rubber mounts with spring	•	•	
Travel pedals and hand levers	•	•	
Adjustable operator seat and joystick control console	•	•	
Heater & air-conditioner, automatic	•	•	
Flexible antenna	•	•	
Radio with MP3 & USB Jack with bluetooth	•	•	
Hydraulic safety lock lever	•	•	
Cab, all-weather sound suppressed, includes:	•	•	
- Cup holders	•	•	
- Door locks	•	•	
- Tinted glass	•	•	
- Floor mat	•	•	
- Horn	•	•	
- Large storage area	•	•	
- Pull-up type front window	•	•	
- Removable lower windshield	•	•	
- Seat belt	•	•	
- Safety glass	•	•	
- Sun screens, front, roof, rear	•	•	
- Rain shield	•	•	
- Windshield wiper with intermittent feature	•	•	
- Volvo Smart View camera	•	•	
- Master key	•	•	
Fabric seat with heater and air suspension	•	•	
Joystick pattern change	•	•	
Opening top hatch	•	•	
Creep Travel Speed	•	•	
Track shoes			
900 mm (36") with triple grousers	•	•	
Digging equipment			
Boom: 7.0 m (23'0")	•	•	
Arm: 3.35 m (11'0")	•	•	
Manual centralized lubrication	•	•	
Linkage with lifting eye	•	•	
Caretrack	•	•	

Equipment

OPTIONAL EQUIPMENT			
	EC530E	EC550E	
Engine			
Oil bath pre-cleaner	•	•	
Diesel coolant heater, 10 kW	•	•	
Auto engine shutdown	•	•	
Reversible fan drive	•	•	
Fuel tank-fast fuel fill preparation	•	•	
Fuel filler pump: 50 l/min (13.2 gal/min), with automatic shut-off	•	•	
Electric			
LED work lights	•	•	
- Deck 2, Cab 3	•	•	
- Boom 4	•	•	
- Counterweight-mounted 1	•	•	
Anti-theft system	•	•	
Flashing beacon, LED	•	•	
Green light beacon (seat belt indicator)	•	•	
Jump start connector, NATO	•	•	
Dig Assist : 2D, In-Field Design and 3D	•	•	
On-Board Weighing	•	•	
Side view and rear view cameras	•	•	
Frame			
Hydraulically removable counterweight	•	•	
Service walk way, foldable	•	•	
Cab entrance, foldable	•	•	
Auxiliary counterweight	•	•	
Undercarriage			
Full track guard	•	•	
Hydraulic system			
Hose rupture valve: boom, Arm	•	•	
Hydraulic piping:	•	•	
- Work tool management system (up to 32 programmable memories)	•	•	
Low pressure line for slope & rotator (X3):	•	•	
Oil leak (drain) line	•	•	
Quick coupler piping	•	•	
Volvo hydraulic quick coupler S3	•	•	
Volvo hydraulic quick coupler VQC-HU	•	•	
Hydraulic oil, ISO VG 32	•	•	
Hydraulic oil, ISO VG 68	•	•	
Hydraulic oil, biodegradable 46	•	•	

OPTIONAL EQUIPMENT			
	EC530E	EC550E	
Cab and interior			
Cabin air filter, HEPA	•	•	
Deluxe seat	•	•	
Seat with heater only	•	•	
Delux seat with multiple adjusting arm rest	•	•	
Comfort Driving Control	•	•	
Falling object guard (FOG) :	•	•	
- Frame-mounted	•	•	
- Cab-mounted	•	•	
Cab-mounted falling object protective structure (FOPS)	•	•	
Smoker kit (ashtray and lighter)	•	•	
Safety net for front window	•	•	
Safety net for lower front window	•	•	
Lower wiper with intermittent control	•	•	
Anti-vandalism kit	•	•	
One piece front window cab	•	•	
High visibility cab	•	•	
Track shoes			
Track shoes 600/750 (24"/30") with triple grousers	•	•	
Track shoes 600 mm (24") with double grousers	•	•	
Digging equipment			
Boom: 6.5 m (21'4")	•	•	
Arm: 2.55 m (8'4"), 3.0 m (9'10"), 3.9 m (12'10")	•	•	
Service			
Tool kit, daily maintenance	•	•	
Tool kit, full scale	•	•	
Automatic lubrication system	•	•	
Air pressure supply in cabin	•	•	

SELECTION OF VOLVO OPTIONAL EQUIPMENT

Deluxe seat



Climate control with HEPA filter



Reversible cooling fan



Foldable walkway



Fast fuel filling preparation



Dig Assist apps, powered by Volvo Co-Pilot



Not all products are available in all markets. Under our policy of continuous improvement, we reserve the right to change specifications and design without prior notice. The illustrations do not necessarily show the standard version of the machine.

V O L V O