



Volvo Construction Equipment

PT220

Volvo Pneumatic Tyre Roller 10.0-24.0 t 135 hp





Volvo D5 Engine

The Volvo D5 engine offers lower fuel consumption, reduced noise level and increased reliability for the best performance. The water cooled diesel engine meets Tier 3 engine emission standards, while the 99kw/135hp provides ample power reserve for rolling on steeper grades or higher elevations.

The ultimate roller to finish the job

Volvo's new 22/24 tonne, eight-wheeled, PT220 pneumatic tyre roller offers the smoothest compaction yet. Designed for roadway applications, the PT220 follows double drum vibratory compactors to produce the perfect mat, every time. Volvo manufactured, right down to the Tier 3 engine, the PT220 provides high-performance compaction so you can finish your job on time and within budget.



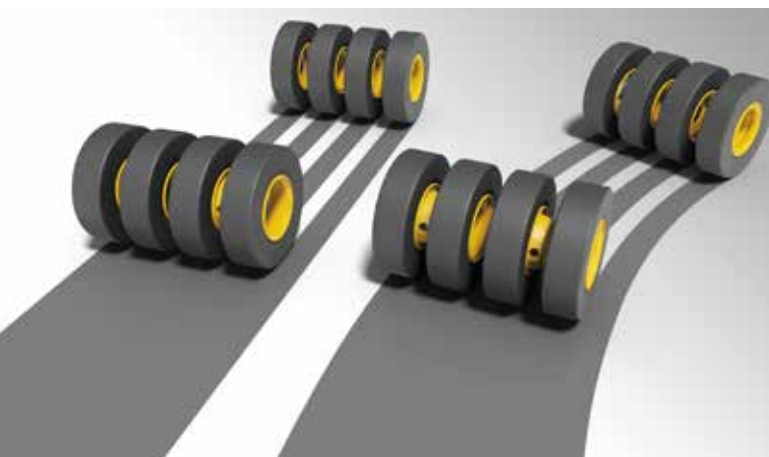
High-performance compaction

Isostatic levelling cylinders keep the front pairs of tyres in uniform contact with the material being compacted. Irregularities in the material are removed and longitudinal asphalt joints are reliably bonded to achieve excellent surface sealing.



Roll Over Protection System (ROPS) with sunshade

Volvo puts operator safety at number one with its operator seatbelt and the ISO certified Roll Over Protection System (ROPS) mounted to the machine's frame. For improved comfort, a sunshade is mounted on the ROPS, enabling the operator to concentrate and remain productive all day.



Overlapping tyres for complete coverage

Front and rear tyre paths are aligned to overlap by 50mm for complete surface coverage. The eight wide-surfaced tyres ensure the perfect kneading effect to achieve uniform material density while maintaining a smooth riding surface.



Hydrostatic drive for smooth operation

Hydrostatic travel drive enables smooth directional changes between forward and reverse, without scuffing the material surface. Hydraulic motors are mounted directly to the rear wheel assembly, driven by a variable displacement hydraulic pump. Hydraulic power steering provides precise steering to maximize surface coverage with uniform tire coverage.

The best features for your kneads



Roll Over Protection System (ROPS) with sunshade

Operator seatbelt and ISO certified Roll Over Protection System (ROPS) mounted to the machine's frame provides operator safety. Roof sunshade protects the operator from direct sunlight.

Sealed ballast compartments

Maximum operating weight of the machine can be increased by ballasting with a variety of ballast options, including water, steel shot and sand.



High-performance compaction

Isostatic levelling cylinders keep the front tyres in even contact with the material surface at all times. Irregularities in the material are removed and excellent surface sealing is achieved.



Hydrostatic drive for smooth operation

Maintenance-free hydrostatic drive enables a smooth transition between forward and reverse direction without damaging the mat.

Adjustable water flow

Water flow for the tyre-wetting system can be adjusted by the operator as required to eliminate material build up on the tyre surface, maintain the mat surface temperature and reduce water refills.

Water level indicator

Water storage tank level indicator is in clear view so the operator can easily monitor the water level.



Overlapping tyres for complete coverage

Front and rear tyre paths are aligned to overlap by 50mm for complete surface coverage. The eight tyres ensure perfect kneading for smooth riding surface and uniform density.



Rust proof water system

Water spray system is rust proof and comprises a 550 litre, LDPE water tank, rubber distribution lines and serviceable brass spray nozzles.

Excellent visibility

Dual operator seats with sliding console provides unobstructed visibility in all directions. The operator has a clear view of the outside edges of right front or left rear tyres and surroundings when rolling forwards or in reverse.



Easy maintenance access

Ground level access to maintenance areas decreases maintenance time and improves quality of daily inspections.



Volvo D5 Engine

Volvo D5, Tier 3 engine offers lower fuel consumption and reduced noise level for the best performance.

Engine hood opening

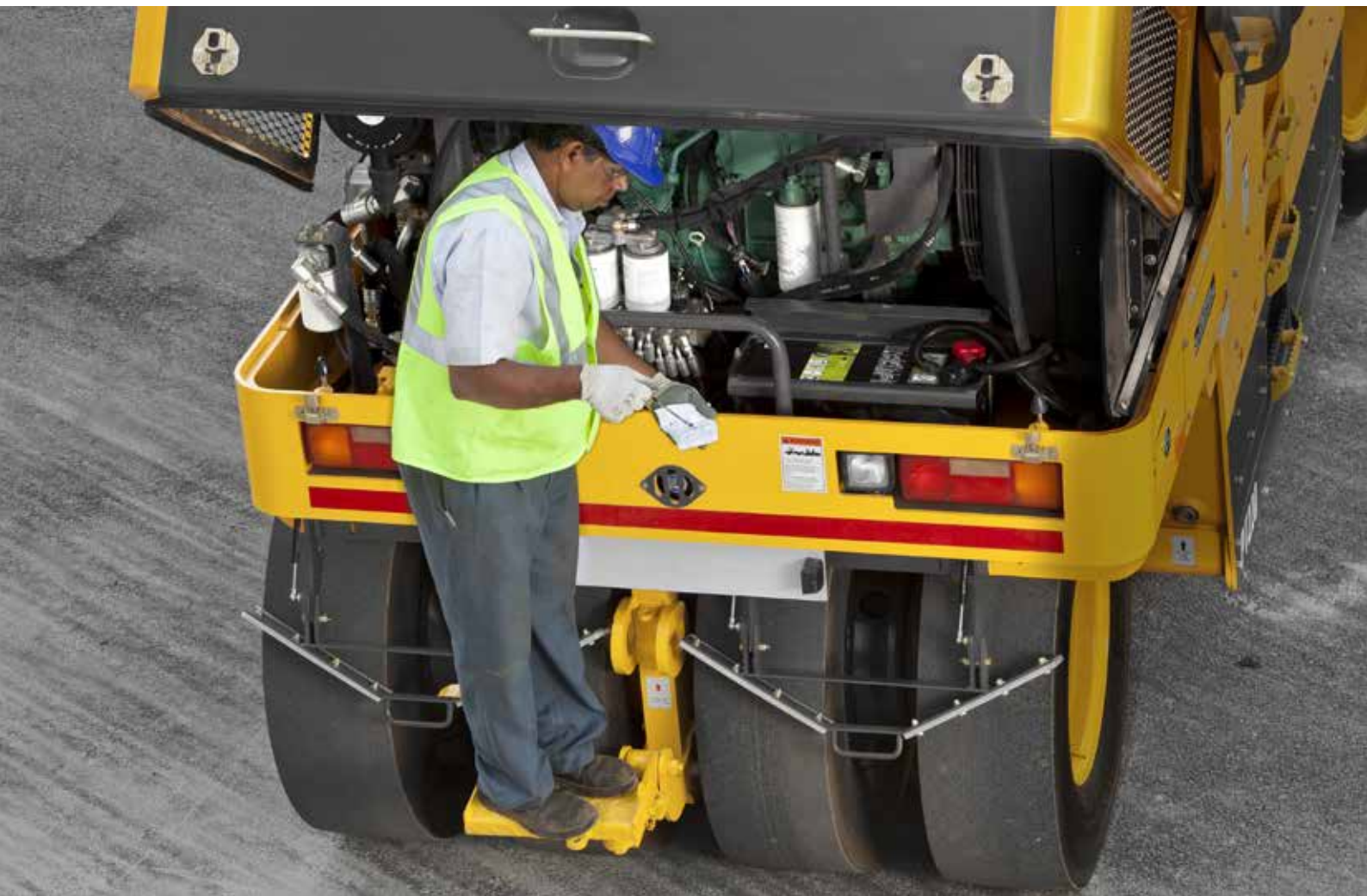
Easy opening of the engine hood for daily maintenance and inspection. Hood is also lockable to protect the engine compartment.

Water nozzles and screens

Water nozzles and screens can be quickly removed, cleaned or replaced. Easily removable fine filters behind each of the eight spray nozzles ensures fine water jet spray.

Quick and easy service access

Time means money and that's why Volvo provides excellent service and support to keep your machines running for longer. The Volvo PT220 was designed with maintenance in mind with conveniently located service points and easy-access engine compartment enabling you to complete all daily checks to ensure a long and productive machine life.



Easy-open engine hood design

The hinged engine hood design is lightweight and raises up and forward with the aid of two gas struts giving wide access to the engine and hydraulic components. A manual locking bar is used for added support and safety when the hood is raised.

Dealer support comes standard

Your local Volvo dealer backs you and your operation with a ready supply of genuine Volvo parts that are perfectly matched to your machine. Your dealer is also ready to help you stay working with expert, trained service and support.

Specifications

Operating Weight

Standard operating weight	kg	10 020
Standard operating weight - Factory ballasted option	kg	13 900
Maximum weight ballasted	kg	21 000
Maximum weight ballasted - Factory ballasted option	kg	24 000
Wheel load	kg	1 370
Wheel load (ballasted)	kg	2 625
Wheel load - Factory ballasted option	kg	3 000
Ballast Capacity	cu.m	3.40

Tyres

Tyre type	11.0 - 20, 18PR	
Number of tyres (front /rear)	4/4	
Tyre overlap	mm	50
Tyre pressure (min/max)	bar	2.0/8.0

Engine

Make	Volvo	
Model	D5DA3	
Rated power @ 2 200 rpm	kW/HP	99/135
Emission compliance	Tier3 / BHARAT STAGE III	

Propulsion

System type	Closed loop hydrostatic	
Driven wheels	Rear	
Speed range (travel)	km/h	0 to 15
Speed range (working)	km/h	0 to 7.5
Theoretical gradeability	%	23

Steering

Steering	Hydraulic power assisted steering	
Steering actuator	Double-acting hydraulic single cylinder	

Electricals

Operating voltage	V	12 VDC, negative ground
Alternator capacity	Z	14V, 95A
Battery	12V 150AH, 1 000CCA	
Headlights	2	
Work lights	2	

Operator console

Console	Sliding	
Seat	2 fixed seats	

Braking

Service brake	Hydrostatic	
Parking brake	Spring Applied Hydraulically Released (SAHR)	

Water spray system

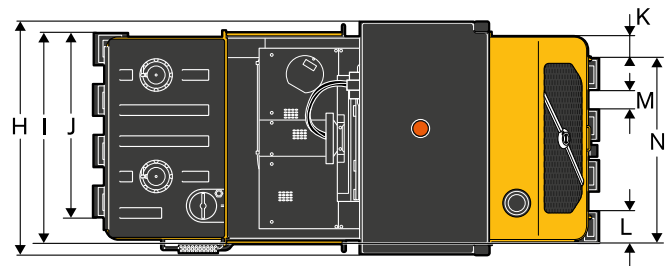
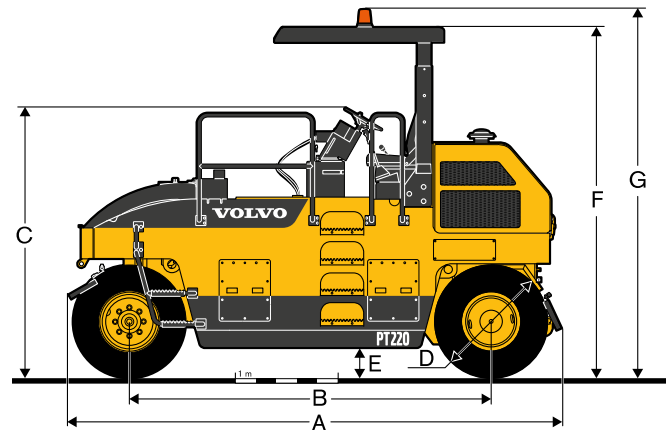
Type	Pressurized	
Spray nozzles	Front & Rear	

Service capacities

Fuel tank capacity	l	200
Hydraulic oil capacity	l	80
Water spray tank	l	550

Safety

Indicators	Warning lamps/alarms for engine	
Audio alarms	Backup alarm	
Sunshade	ROPS	
Operator restraint	Seat belt	
Switch	Centralized emergency shut down switch for machine operations	



Dimensions

A	mm	5 051
B	mm	3 520
C	mm	2 631
D	mm	1 080
E	mm	270
F	mm	3 411
G	mm	3 633
H	mm	2 225
I	mm	1 980
J	mm	1 740
K	mm	244
L	mm	292
M	mm	188
N	mm	1 734

Optional equipment

Air on Line
Dual Water Pump
Factory Ballast
Nylon Scraper Bar

Not all products are available in all markets. Under our policy of continuous improvement, we reserve the right to change specifications and design without prior notice. The illustrations do not necessarily show the standard version of the machine.

VOLVO

Volvo Construction Equipment

www.volvoce.com