

Volvo Construction Equipment
Building Tomorrow



EC60E

Volvo Excavators 5.5-6.8 t / 12,110-14,990 lb 59 hp



A passion for performance

At Volvo Construction Equipment, we're not just coming along for the ride. Developing products and services that raise productivity – we are confident we can lower costs and increase profits for customers around the globe. Part of the Volvo Group, we are passionate about innovative solutions to help you work smarter – not harder.

Helping you to do more

Doing more with less is a trademark of Volvo Construction Equipment. High productivity has long been married to low energy consumption, ease of use and durability. When it comes to lowering life-cycle costs, Volvo is in a class of its own.

Designed to fit your needs

There is a lot riding on creating solutions that are suited to the particular needs of different industry applications. Innovation often involves high technology – but it doesn't always have to. Some of our best ideas have been simple, based on a clear and deep understanding of our customers' working lives.



You learn a lot in 180 years

Over the years, Volvo has advanced solutions that have revolutionized the use of construction equipment. No other name speaks Safety louder than Volvo. Protecting operators, those around them and minimizing our environmental impact are traditional values that continue to shape our product design philosophy.

We're on your side

We back the Volvo brand with the best people. Volvo is truly a global enterprise, one that is on standby to support customers quickly and efficiently – wherever they are.

We have a passion for performance.

A strong, dedicated, capable dealer network

Our dealers are strategically located throughout North America to provide the equipment you need and the parts and service support you demand for a productive and profitable operation.

The strength of our dealer network is enhanced with extensive individualized product support training at our best-in-class Customer Center in Shippensburg and through hands-on training. Using a great Product Demonstration Center featuring a dedicated area for most common applications, visitors operate equipment from our entire product line under a variety of simulated working conditions. This facility is in year-round use by our dealers and customers.

Building the best starts right here.

The products designed and manufactured by Volvo Construction Equipment have their beginnings at the most advanced Research & Design centers in the industry. Volvo CE machines are designed in 11 R&D centers and produced in 15 manufacturing facilities across the world.

The major R&D center and manufacturing plant in the Americas is located in Shippensburg, Pennsylvania. This facility has been in operation for over 30 years and – with its recently added 200,000 sq. ft. expansion – now covers 570,000 sq. ft. on an 80 acre campus. Dedicated work teams and highly advanced technologies and techniques using the Volvo Production System ensure continuous quality improvements, labor savings and cost control to reach the high quality that our customers have come to expect from Volvo.





Volvo Trucks



Renault Trucks



Mack Trucks



UD Trucks



Volvo Buses



Volvo Construction Equipment



Volvo Penta



Volvo Financial Services

More space, more comfort, more work

The new and improved EC60E features a larger cab design for a comfortable and more productive operator environment. Improved ergonomics and a modern LCD display give you perfect control in all operations. Plenty of storage has been added for personal belongings.

Operator convenience

Increased storage space is available for operator comfort and convenience. A phone tray, two power sockets, cup holder and three other large storage areas makes the Volvo cab a more convenient working environment.



Operator visibility

All-round visibility is improved by thinner pillars, larger glazed area and enlarged wiper blade. The rear view camera secures a better view for perfect and safe control through the 7" color LCD display. This ensures there are no blind spots even in the most confined working areas.



Work in comfort

The comfortable and adjustable seat makes it easier for the operator to work hard all day and feel less tired by the end of it. The cab's air conditioning is 10% more efficient and in automatic mode, the temperature remains at a set level. Six adjustable vents allow for optimal airflow in the cab.



Ease of control

Control your machine with minimal effort in order to get more done in less time. The keypad groups all controls on the right hand side and the 7" color LCD screen displays all machine information for access to functions through its easy to use menus. Through the hot keys, the operator can directly access pre-set functions for added convenience. The new and improved proportional joystick provides better grip, fits your thumb perfectly and increases ease of control.





LARGER CAB

10% more space results in comfortable and relaxed operation, increasing production and reducing fatigue. The new cab design creates more space behind the seat, allowing the operator to move more freely within the space. The new generation Volvo Cab features more in cab room, increased glazed area and reduced noise levels.



BOOSTED PERFORMANCE

Do more in less time with increased combined digging efforts, a 10% improvement in traction, swing force and lifting capacity. The EC60E has been designed to tackle the most challenging job sites and contracts using the powerful Tier 4 final EU Stage V engine and adjustable hydraulic flow.

Power for performance

Climb quicker, swing smoother, dig harder and load faster with the EC60E. Improved traction, swing force and lifting capacity gets you results, fast. This versatile and powerful machine can be tailored for any job and is suitable for a wide range of applications.

Powerful Volvo Tier 4 final EU Stage V engine

Give your job site a boost and achieve fast results. Increased power to 44.3kW and improved cooling ensure optimized performance in any climate. For the ultimate combination of power and performance, the engine helps to push through challenging conditions.



Smooth operation

Smooth combined operation means you can make very accurate and precise movements. With responsive controls the machine does exactly what the operator intends for less fatigue and fluent movement.



Versatility

Perform on any job site, whether you're working in a confined space or major construction area. The machine's compact design, long arm, optional fixed boom and offset boom, longer dozer blade, auxiliary hydraulic and thumb pipings makes the machine suitable for a wide range of jobs and applications.



Operator performance

The operator can set the machine to their own style and to suit the job at hand for easier control and increased performance. The auxiliary hydraulic flows, electric dozer blade and boom offset speed can be adjusted by the operator and tailored to three different work response modes – 'Active', 'Normal' or 'Soft'.



Profit in your business

The EC60E is designed and built to increase your profitability and keep you working for longer. To reduce your running costs it features excellent service access, convenient maintenance points and Volvo's auto engine shutdown feature. With better fuel efficiency than the previous machine series, this durable and reliable machine secures your costs and increases your uptime.

Low fuel consumption

The new Volvo engine and improved hydraulics together offer superior fuel efficiency. The standard auto idle feature helps to reduce your fuel consumption even further and increase your profits.



Auto engine shutdown

A unique offering from Volvo, the engine stops automatically after a preselected time, lowering fuel costs and noise. A stopped hour meter reduces maintenance costs and increases the resale value of the machine.



MATRIS and VCADS Pro

By working with your dealer and using Volvo MATRIS software you can analyse operator behaviour to improve efficiency, boost productivity and reduce your fuel and maintenance costs. Volvo also offers the VCADS Pro diagnostic system, making it easy to control your machine.



Durability and reliability

The EC60E is designed with the same high quality as all Volvo machines so you can be assured it's durable and reliable on your job site. You can depend on your machine to perform and work hard for peace of mind.





SERVICEABILITY

Keep your machine up and running with a number of features combined to increase machine availability and reduce downtime. Ground level service access, including new main control valve location, convenient greasing points and an easy to clean cooling unit all reduce service time and maintenance costs. Check service intervals easily through the in-cab screen, which shows reminders when maintenance is needed.



ATTACHMENTS VERSATILITY

The machine's attachment can be easily changed to save time and costs. Its design, hydraulics, piping and in-cab switches combined with the Volvo attachments range allows the EC60E to take on a variety of tasks. Volvo attachments work in harmony with the machine to deliver maximum productivity.

One machine, many job sites

Volvo offers a wide range of durable attachments that are suitable for any job site, including utilities, building, agriculture, landscaping and forestry. Volvo attachments are an integrated part of the excavator for which they're intended –delivering maximum productivity and versatility.

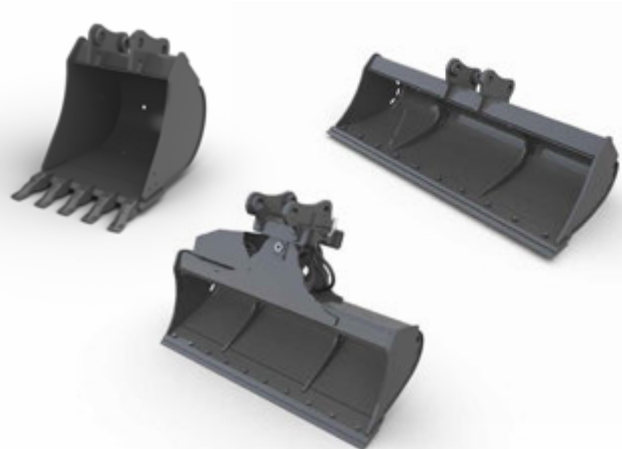
Quick coupler

Both the mechanical and the hydraulic quick couplers allow attachments to be changed quickly and efficiently. Making it easier on site, the quick coupler picks different Volvo buckets and is the perfect match for the breakers and thumb.



Buckets

A complete range of buckets from general purpose reinforced buckets to ditching buckets, allow the machine to work on many job sites for a wide range of applications. The durable buckets can work in loose gravel, crushed rock, dirt and soil.



Breaker

Volvo's durable hydraulic breakers have been designed for ultimate compatibility with Volvo excavators. The wide range of breaker tools (or bits) has been built to break all kinds of materials and combines excellent performance with low noise and vibration levels.



Thumb

Designed to work with both Volvo direct fit buckets and quick coupler, the Volvo thumb makes many tasks possible, including piling, placing, loading, lifting and carrying.



A compact machine with big potential

BOOSTED PERFORMANCE

Do more in less time with increased combined digging efforts, a 10% improvement in traction, swing force and lifting capacity.

Smooth operation

Smooth combined operation means you can make very accurate and precise movements.

MATRIS and VCADS Pro

Volvo MATRIS analyses operator behaviour, improving efficiency and productivity. VCADS Pro helps to control your machine.

ATTACHMENTS VERSATILITY

The Volvo attachments range allows the machine to take on a variety of tasks for a wide range of jobs and applications.

Versatility

Perform on any job site, whether you're working in a confined space or major construction area

Auto engine shutdown

The auto engine shutdown provides lower fuel costs, less noise, much lower maintenance costs and a greater resale value.

ECO mode

Volvo's unique ECO mode improves fuel efficiency without any loss of performance in most operating conditions.



LARGER CAB

More space results in comfortable and relaxed operation, increasing production and reducing fatigue.

SERVICEABILITY

Ground level service access, new main control valve location, convenient greasing points and easy to clean cooling unit reduce service time.

Ease of control

The keypad groups all controls on the right hand side and the LCD screen displays all machine information for access to functions.

Operator convenience

Increased storage space in the cab provides for operator comfort and convenience.

Powerful Volvo T4f EU Stage V final engine

For the ultimate combination of power and performance, the powerful engine pushes through challenging conditions.

CUSTOMER SUPPORT AGREEMENTS

Customer Support Agreements offer preventive maintenance, total repairs and a number of uptime services.



Adding value to your business

Being a Volvo customer means having a complete set of services at your fingertips. Volvo can offer you a long-term partnership, protect your revenue and provide a full range of customer solutions using high quality parts, delivered by passionate people. Volvo is committed to increasing the positive return on your investment and maximising uptime.

Complete Solutions

Volvo has the right solution for you. So why not let us provide all your needs throughout the whole life cycle of your machine? By

listening to your requirements, we can reduce your total cost of ownership and increase your revenue.



Genuine Volvo Parts

Our attention to detail is what makes us stand out. This proven concept acts as a solid investment in your machine's future. Parts are extensively tested and approved because every part is vital for uptime and performance. Only by using Genuine Volvo Parts, can you be sure that your machine retains the renowned Volvo quality.

Service Network

In order to respond to your needs faster, a Volvo expert is on their way to your job site from one of our Volvo facilities. With our extensive infrastructure of technicians, workshops and dealers, Volvo has a comprehensive network to fully support you using local knowledge and global experience.





CUSTOMER SUPPORT AGREEMENTS

The range of Customer Support Agreements offer preventive maintenance, total repairs and a number of uptime services. Volvo uses the latest technology to monitor machine operation and status, giving you advice to increase your profitability. By having a Customer Support Agreement you are in control of your service costs.

Volvo EC60E in detail

Engine

The new engine which provide excellent performance is equipped with a four-cylinder, vertical, electronic controlled high pressure fuel injectors, in-line turbo charger and water cooled diesel engine type. This engine fully meets the demands of the latest Tier 4 final EU Stage V emissions regulations.

Model	Volvo	D2.6H
Max. power at	r/min (r/s)	2,200 (36.7)
Net (ISO 9249/SAEJ1349)	kW (hp)	42.7 (57.3)
Gross (SAE J1995)	kW (hp)	44.3 (59.4)
Max. torque	Nm (ft lbf)	221.6 (163)
at engine speed	r/min	1,500
No. of cylinders		4
Displacement	l (in ³)	2.61 (159)
Bore	mm (in)	87 (3.42)
Stroke	mm (in)	110 (4.33)

Electrical system

Voltage	V	12
Batteries	V	1 x 12
Battery capacity	Ah	100
Alternator	V/Ah	12/90
Starter motor output	V - kW	12 - 2.5

Hydraulic system

Open-center, negative hydraulic system providing accurate controllability

Main pump: Variable-displacement pump

Maximum flow	l/min (gal/min)	2 x 60.5 (2 x 16)
--------------	-----------------	-------------------

Swing pump: Gear pump

Maximum flow	l/min (gal/min)	1 x 35.2 (1 x 9.3)
--------------	-----------------	--------------------

Relief valve setting pressure

Implement	MPa (psi)	22.6 (3,278)
Travel circuit	MPa (psi)	24.5 (3,560)
Swing circuit	MPa (psi)	19.6 (2,843)
Pilot circuit	MPa (psi)	3.2 (464)

Swing system

No need for gear oil replacement

The lubricating system uses hydraulic operation oil for the reduction gear, eliminating the need for gear oil replacement.

Built-in parking brake

Parking brake can be built into the hydraulic motor, enabling safer parking on an incline.

Shockless function

Shockless relief is standard equipment to enable smooth traversing.

Max. swing speed	r/min	9.5
Max. swing torque	kNm (ft lbf)	12.3 (9,072)

Undercarriage

The undercarriage has a robust X-shaped frame.

Track shoes		2 x 39
Link pitch	mm (in)	135 (5.31)
Shoe width - steel	mm (in)	380 / 500 (15 / 19.7)
Shoe width - rubber	mm (in)	400 (15.7)
Bottom rollers		2 x 5
Top rollers		2 x 1

Travel System

Each track is powered by an automatic two-speed shift travel motor. The track brakes are multi-disc, spring-applied and hydraulic released. The travel motor, brake and planetary gears are well protected within the track frame.

Travel speed low	km/h (mi/h)	2.4 (1.5)
Travel speed high	km/h (mi/h)	4.4 (2.7)
Max. drawbar pull	kN (lbf)	52.8 (11,870)
Gradeability	°	35

Service Refill

Fuel tank	l (gal)	105 (27.7)
Hydraulic system, total	l (gal)	120 (31.7)
Hydraulic tank	l (gal)	76 (20.1)
Engine oil	l (gal)	11 (2.9)
Engine coolant	l (gal)	10 (2.6)
Travel reduction unit	l (gal)	2 x 0.8 (2 x 0.2)

Sound Level

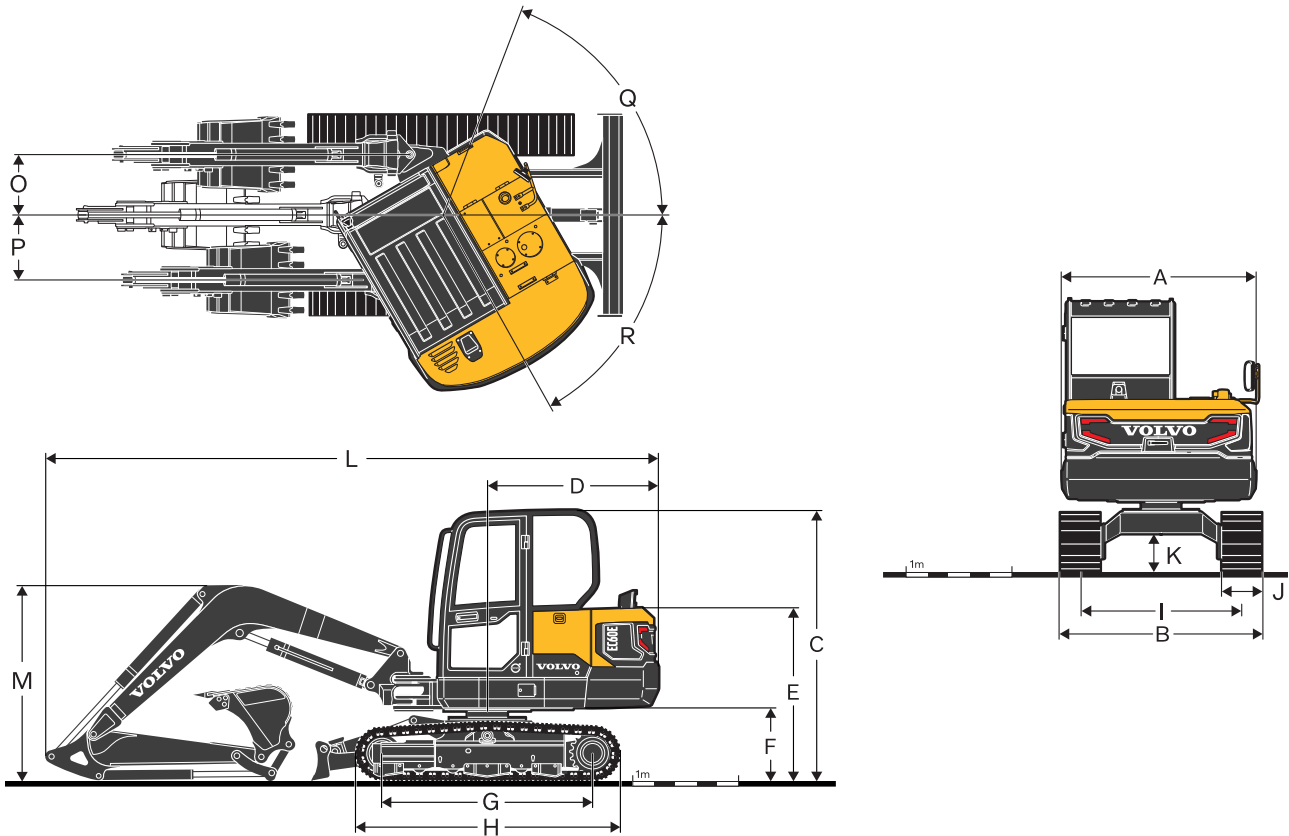
Sound pressure level in cab according to ISO 6396

L _{pA} (standard)	dB	78
----------------------------	----	----

External sound level according to ISO 6395 and EU Noise Directive 2000/14/EC

L _{WA} (standard)	dB	97
----------------------------	----	----

Specifications

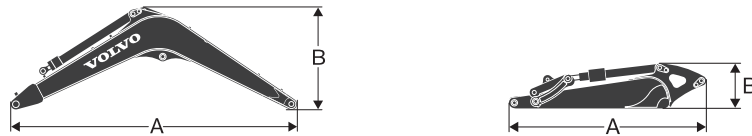


DIMENSIONS		EC60E					
		m	ft in	3.0	9'10"	3.0	9'10"
Boom							
Arm		m	ft in	1.6	5'3"	1.9	6'3"
A	Overall width of upper structure	mm	ft in	1 845	6'1"	1 845	6'1"
B	Overall width	mm	ft in	1 920	6'4"	1 920	6'4"
C	Overall height of cab	mm	ft in	2 584	8'6"	2 584	8'6"
D	Tail swing radius	mm	ft in	1 650	5'5"	1 650	5'5"
E	Overall height of engine hood	mm	ft in	1 630	5'4"	1 630	5'4"
F	Counterweight clearance *	mm	ft in	671	2'2"	671	2'2"
G	Tumbler length	mm	ft in	1 990	6'6"	1 990	6'6"
H	Track length	mm	ft in	2 500	8'2"	2 500	8'2"
I	Track gauge	mm	ft in	1 520	5'0"	1 520	5'0"
J	Shoe width	mm	ft in	380	1'3"	380	1'3"
K	Min. ground clearance *	mm	ft in	350	1'2"	350	1'2"
L	Overall length	mm	ft in	5 800	19'0"	5 865	19'3"
M	Overall height of boom	mm	ft in	1 854	6'1"	1 978	6'6"
O	Boom swing distance	mm	ft in	684	2'3"	684	2'3"
P	Boom swing distance	mm	ft in	755	2'6"	755	2'6"
Q	Boom swing angle		°		80		80
R	Boom swing angle		°		50		50

* Without shoe grouser

** Based on Steel track

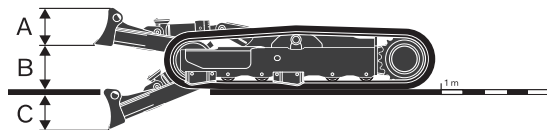
Specifications



DIMENSIONS		Unit		Boom		Arm			
		m	ft in	3.0	9'10"	1.6	5'3"	1.9	6'3"
A	Length	mm	ft in	3 110	10'2"	2 102	6'11"	2 402	7'11"
B	Height	mm	ft in	1 192	3'11"	488	1'7"	497	1'8"
	Width	mm	ft in	336	1'1"	300	1'0"	300	1'0"
	Weight	kg	lb	378	830	168	370	181	400

Boom * Includes cylinder, piping and pin, excludes boom cyl. Pin

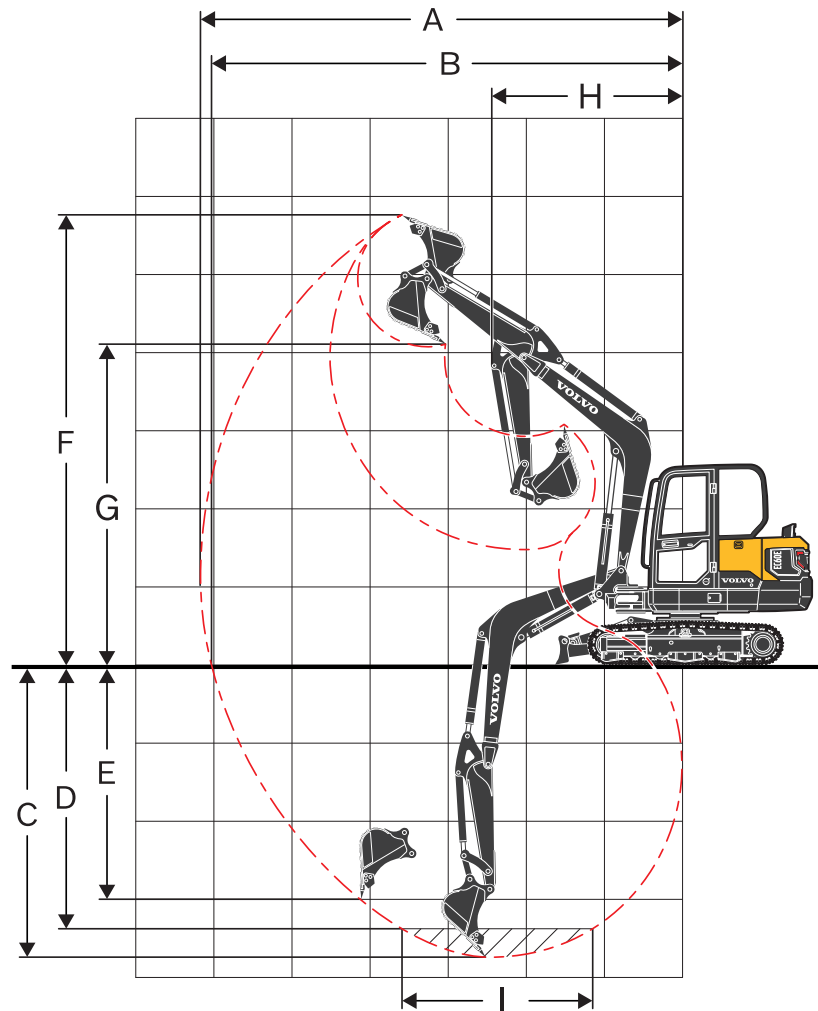
Arm * Includes cylinder, linkage and pin



DIMENSIONS		Unit		Dozer blade					
				Standard dozer		Zero-offset (Longer) dozer		Angle dozer	
A	Height	mm	ft in	350	1'2"	350	1'2"	397	1'4"
	Width	mm	ft in	1 920	6'4"	1 920	6'4"	1 920	6'4"
B	Lifting height	mm	ft in	351	1'2"	405	1'4"	399	1'4"
C	Digging depth	mm	ft in	446	1'6"	635	2'1"	682	2'3"
	Angle (Right)			°		-		25	
	Angle (Left)			°		-		25	

MACHINE WEIGHTS AND GROUND PRESSURE

	Shoe width		Operating weight		Ground pressure	
	mm	in	kg	lb	kPa	psi
Boom 3 m / 9'10", Arm 1.6 m / 5'3", Bucket 129 kg (142 l) / 280 lb, Counterweight 440 kg / 970 lb						
Steel track	380	15"	5 877	12,960	34.9	5
Steel track	500	20"	5 979	13,180	27	4
Rubber track	400	16"	5 730	12,630	32.3	5
Rubber pad	400	16"	6 049	13,340	33.8	5
Boom 3 m / 9'10", Arm 1.9 m / 6'3", Bucket 129 kg (142 l) / 280 lb, Counterweight 440 kg / 970 lb						
Steel track	380	15"	5 927	13,070	35.2	5
Steel track	500	20"	6 029	13,290	27.2	4
Rubber track	400	16"	5 780	12,740	32.6	5
Rubber pad	400	16"	6 099	13,450	34.1	5



WORKING RANGES

Description		Unit					
Boom		m	ft in	3.0	9'10"	3.0	9'10"
Arm		m	ft in	1.6	5'3"	1.9	6'3"
A	Max. digging reach	mm	ft in	6 105	20'0"	6 395	21'0"
B	Max. digging reach on ground	mm	ft in	5 970	19'7"	6 260	20'6"
C	Max. digging depth	mm	ft in	3 695	12'1"	3 995	13'1"
D	Max. digging depth (l=2.44m / 8'0" level)	mm	ft in	3 295	10'10"	3 640	11'11"
E	Max. vertical wall digging depth	mm	ft in	2 625	8'7"	2 900	9'6"
F	Max. cutting height	mm	ft in	5 695	18'8"	5 885	19'4"
G	Max. dumping height	mm	ft in	4 150	13'7"	4 340	14'3"
H	Min. front swing radius	mm	ft in	2 465	8'1"	2 470	8'1"

DIGGING FORCES WITH DIRECT FIT BUCKET

Breakout force (bucket)	SAE J1179	kN	lb	37.7	8,470	37.7	8,470
	ISO 6015	kN	lb	43.3	9,720	43.3	9,720
Tearout force (arm)	SAE J1179	kN	lb	28.2	6,340	25	5,630
	ISO 6015	kN	lb	28.8	6,470	25.4	5,710
Rotation angle, bucket			°	196		196	

LIFTING CAPACITY EC60E

Lifting capacity at the arm end without bucket.

For lifting capacity including bucket, simply subtract actual weight of the direct fit bucket or the bucket with quick coupler from the following values.

	Lifting hook related to ground level	1.0 m, 3.3 ft		2.0 m, 6.6 ft		3.0 m, 9.9 ft		4.0 m, 13.2 ft		5.0 m, 16.5 ft		Max. Reach			
		Along UC	Across UC	Along UC	Across UC	Along UC	Across UC	Along UC	Across UC	Along UC	Across UC	Along UC	Across UC		
Boom: 3.0m / 9'10" Arm: 1.9m GP / 6'3" GP Shoe: 400 mm / 16" Rubber track CWT: 440 kg / 970lb Dozerblade: Up	5.0 m	kg	-	-	-	-	-	-	-	-	-	*1 380	1 200	3.7 m	
	16.5 ft	lb	-	-	-	-	-	-	-	-	-	*3,060	2,690	12.1 ft	
	4.0 m	kg	-	-	-	-	-	-	*1 280	1 080	-	-	1 130	810	4.7 m
	13.2 ft	lb	-	-	-	-	-	-	*2,830	2,370	-	-	2,520	1,810	15.3 ft
	3.0 m	kg	-	-	-	-	-	-	*1 360	1 060	1 020	730	940	670	5.2 m
	9.9 ft	lb	-	-	-	-	-	-	*3,000	2,320	2,220	1,590	2,070	1,480	17.2 ft
	2.0 m	kg	-	-	-	-	*2 070	1 570	1 410	1 010	1 000	710	850	600	5.5 m
	6.6 ft	lb	-	-	-	-	*4,530	3,440	3,090	2,210	2,180	1,550	1,870	1,320	18.1 ft
	1.0 m	kg	-	-	-	-	2 080	1 430	1 350	950	970	680	820	570	5.6 m
	3.3 ft	lb	-	-	-	-	4,560	3,140	2,960	2,080	2,120	1,500	1,810	1,270	18.3 ft
	0.0 m	kg	-	-	*1 510	*1 510	2 000	1 360	1 300	910	940	660	840	590	5.4 m
	0.0 ft	lb	-	-	*3,370	*3,370	4,370	2,970	2,850	1,980	2,070	1,450	1,860	1,300	17.8 ft
	-1.0 m	kg	*2 060	*2 060	*2 880	2 560	1 970	1 330	1 280	890	940	660	930	650	5.1 m
	-3.3 ft	lb	*4,560	*4,560	*6,410	5,600	4,310	2,920	2,810	1,940	2,060	1,440	2,050	1,430	16.6 ft
	-2.0 m	kg	*3 400	*3 400	*3 700	2 610	1 990	1 350	1 300	900	-	-	1 160	810	4.4 m
-6.6 ft	lb	*7,540	*7,540	*8,080	5,710	4,360	2,960	2,840	1,970	-	-	2,560	1,790	14.3 ft	
-3.0 m	kg	-	-	*1 690	*1 690	*1 040	*1 040	-	-	-	-	*970	*970	3.1 m	
-9.9 ft	lb	-	-	*3,610	*3,610	*2,160	*2,160	-	-	-	-	*2,110	*2,110	10.0 ft	
Boom: 3.0m / 9'10" Arm: 1.9m GP / 6'3" GP Shoe: 380 mm / 15" Steel track CWT: 440 kg / 970lb Dozerblade: Down	5.0 m	kg	-	-	-	-	-	-	-	-	-	*1 380	1 230	3.7 m	
	16.5 ft	lb	-	-	-	-	-	-	-	-	-	*3,060	2,960	12.1 ft	
	4.0 m	kg	-	-	-	-	-	-	*1 280	1 190	-	-	*1 160	900	4.7 m
	13.2 ft	lb	-	-	-	-	-	-	*2,830	2,600	-	-	*2,560	2,000	15.3 ft
	3.0 m	kg	-	-	-	-	-	-	*1 360	1 170	*1 310	800	*1 090	740	5.2 m
	9.9 ft	lb	-	-	-	-	-	-	*3,000	2,560	*2,900	1,760	*2,400	1,640	17.2 ft
	2.0 m	kg	-	-	-	-	*2 070	1 740	*1 600	1 110	*1 380	790	*1 090	660	5.5 m
	6.6 ft	lb	-	-	-	-	*4,530	3,810	*3,510	2,440	*3,040	1,720	*2,400	1,470	18.1 ft
	1.0 m	kg	-	-	-	-	*2 740	1 600	*1 870	1 050	*1 480	760	*1 140	640	5.6 m
	3.3 ft	lb	-	-	-	-	*5,990	3,500	*4,100	2,310	*3,260	1,660	*2,520	1,410	18.3 ft
	0.0 m	kg	-	-	*1 510	*1 510	*3 020	1 520	*2 030	1 010	*1 530	740	*1 270	650	5.4 m
	0.0 ft	lb	-	-	*3,370	*3,370	*6,610	3,320	*4,440	2,210	*3,340	1,620	*2,800	1,450	17.8 ft
	-1.0 m	kg	*2 060	*2 060	*2 880	*2 880	*2 890	1 500	*1 980	990	*1 380	730	*1 350	720	5.1 m
	-3.3 ft	lb	*4,560	*4,560	*6,410	6,360	*6,320	3,270	*4,330	2,170	*3,000	1,610	*2,970	1,600	16.6 ft
	-2.0 m	kg	*3 400	*3 400	*3 700	2 970	*2 370	1 510	*1 590	1 000	-	-	*1 300	900	4.4 m
-6.6 ft	lb	*7,540	*7,540	*8,080	6,480	*5,170	3,310	*3,450	2,200	-	-	*2,860	2,000	14.3 ft	
-3.0 m	kg	-	-	*1 690	*1 690	*1 040	*1 040	-	-	-	-	*970	*970	3.1 m	
-9.9 ft	lb	-	-	*3,610	*3,610	*2,160	*2,160	-	-	-	-	*2,110	*2,110	10.0 ft	
Boom : 3.0m / 9'10" Arm : 1.9m GP / 6'3" GP Shoe : 380 mm / 15" Steel track CWT : 440 kg / 970lb Dozerblade: Up	5.0 m	kg	-	-	-	-	-	-	-	-	-	*1 380	1 230	3.7 m	
	16.5 ft	lb	-	-	-	-	-	-	-	-	-	*3,060	2,760	12.1 ft	
	4.0 m	kg	-	-	-	-	-	-	*1 280	1 110	-	-	*1 160	840	4.7 m
	13.2 ft	lb	-	-	-	-	-	-	*2,830	2,430	-	-	*2,560	1,860	15.3 ft
	3.0 m	kg	-	-	-	-	-	-	*1 360	1 090	1 050	750	960	690	5.2 m
	9.9 ft	lb	-	-	-	-	-	-	*3,000	2,380	2,290	1,640	2,140	1,520	17.2 ft
	2.0 m	kg	-	-	-	-	*2 070	1 610	1 450	1 040	1 030	730	870	620	5.5 m
	6.6 ft	lb	-	-	-	-	*4,530	3,530	3,180	2,270	2,250	1,600	1,930	1,360	18.1 ft
	1.0 m	kg	-	-	-	-	2 140	1 470	1 390	980	1 000	700	840	590	5.6 m
	3.3 ft	lb	-	-	-	-	4,690	3,230	3,050	2,140	2,190	1,540	1,870	1,310	18.3 ft
	0.0 m	kg	-	-	*1 510	*1 510	2 060	1 390	1 340	930	980	680	870	600	5.4 m
	0.0 ft	lb	-	-	*3,370	*3,370	4,500	3,050	2,940	2,040	2,140	1,490	1,920	1,340	17.8 ft
	-1.0 m	kg	*2 060	*2 060	*2 880	2 640	2 040	1 370	1 320	910	970	680	960	670	5.1 m
	-3.3 ft	lb	*4,560	*4,560	*6,410	5,760	4,450	3,010	2,900	2,000	2,130	1,490	2,120	1,480	16.6 ft
	-2.0 m	kg	*3 400	*3 400	*3 700	2 690	2 050	1 390	1 340	930	-	-	1 190	830	4.4 m
-6.6 ft	lb	*7,540	*7,540	*8,080	5,870	4,490	3,050	2,930	2,030	-	-	2,650	1,850	14.3 ft	
-3.0 m	kg	-	-	*1 690	*1 690	*1 040	*1 040	-	-	-	-	*970	*970	3.1 m	
-9.9 ft	lb	-	-	*3,610	*3,610	*2,160	*2,160	-	-	-	-	*2,110	*2,110	10.0 ft	

Notes: 1. The above loads are in compliance with SAE J1097 and ISO 10567 Hydraulic Excavator Lifting Capacity Standards. 2. Rated loads do not exceed 87% of hydraulic lifting capacity or 75% of tipping load. 3. Rated loads marked with an asterisk (*) are limited by hydraulic capacity rather than tipping load.

Equipment

STANDARD EQUIPMENT

Engine

Low-emission Volvo T4f EU Stage V diesel engine
 Standard cooling system
 Two-stage air filter
 Fuel filter and water separator
 Alternator, 90 A

Electric / Electronic control system

Safe engine start function
 Automatic idling system
 Halogen working lights;
 Cab-mounted 1 (Front), Boom-mounted 1(LH)
 Battery, 12 V / 100 Ah
 Start motor, 12 V / 2.5 kW
 Monitor and keypad
 Mater electrical disconnect switch
 Travel alarm
 Electric pilot control change

Frame

Rearview mirror
 440 kg (970 lb) counterweight
 Under cover
 Dozer blade

Undercarriage

400 mm (16") rubber track

Hydraulic system

Automatic two speed travel motors
 Cylinder cushioning
 Hydraulic fluid mineral 47

Cab and interior

Fabric operator seat with suspension
 Seat belt, 2 inch retractable
 Control joystick
 Radio with MP3/AUX
 Canopy
 Master key
 Hour meter (non analog)

Digging equipment

Boom: 3.0 m (9'10"), Arm: 1.6 m (5'3")
 Linkage

Service

Tool kit-daily maintenance

OPTIONAL EQUIPMENT

Engine

Water separator (With heater)
 Engine auto shut down

Electric / Electronic control system

Fuel filler pump: 35 l/min (9.3 gpm), with automatic shut-off
 Halogen extra working lights;
 Cab-mounted 1 (Rear)
 Boom-mounted 1(RH)
 Caretrack
 Rotating warning beacon
 Rearview Camera
 Electric dozerblade switch on joystick
 LED Light

Undercarriage / Superstructure

380 mm (15"), 500mm (20") steel track
 400 mm (16") rubber pad
 400 mm (16") Add on rubber pad

Frame

Dozer blade with floating function
 Angle dozer blade

Hydraulic system

Hydraulic piping:
 Breaker & shear
 Slope & rotator
 Grapple
 Thumb (with three way valve)
 Quick coupler
 Hose rupture valve for boom, arm
 Overload warning device
 Hydraulic oil, ISO VG 32, 68
 Hydraulic oil, biodegradable 46
 Hydraulic oil, longlife oil 32, 46, 68

Cab and interior

Cab
 Heater and air-conditioner
 Fabric operator seat with suspension with heater
 PVC operator seat with suspension
 Control joystick, X3 proportional
 Seat belt, 3 inch retractable
 Radio with MP3/AUX/Bluetooth
 Mechanical hour meter
 Cab mounted FOG (Falling Object Guard)
 FOPS (Falling Object Protection Structure)
 Sun screen, front/roof
 Safety net

Digging equipment

Arm: 1.9 m (6'3")

Service

Tool kit, full scale
 Spare parts

SELECTION OF VOLVO OPTIONAL EQUIPMENT

Electric dozer blade switch on joystick



Rear view camera



Angle dozer blade



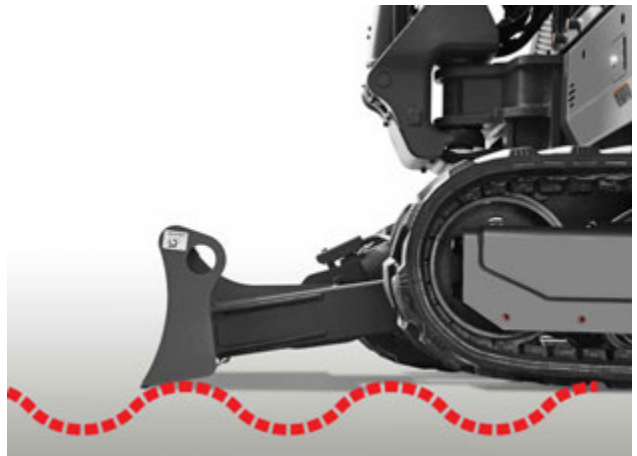
LED Light



Long arm



Floating dozer blade



Not all products are available in all markets. Under our policy of continuous improvement, we reserve the right to change specifications and design without prior notice. The illustrations do not necessarily show the standard version of the machine.



VOLVO

Volvo Construction Equipment
volvoce.com