

V O L V O

2023 | PRODUCTS & SERVICES

REGION EUROPE



Content

Find us on:





Welcome to our world **4**

Rigid Haulers	6
Articulated Haulers	10
Wheel Loaders	14
Compact Wheel Loaders	26
Pipelayers	32
High Reach Demolition Excavators	34
Crawler Excavators >12 t	38
Compact Excavators <12 t	50
Wheeled Excavators >12 t	66
Soil Compactors	72
Asphalt Compactors	74
Tracked Pavers	76
Wheeled Pavers	78
Screeds	80

Volvo Services **82**

Notes **98**

Please be aware that not all models are available in all markets.



Welcome to our world

Welcome to a world of industry leading machinery. A world where imagination, hard work and technological innovation will lead the way towards developing a future which is cleaner, smarter, and more connected. A world supported by the enduring values of the Volvo Group. A world of stability, sustainability and innovation. A world which we put our customers at the heart of.

Welcome to the world of Volvo Construction Equipment – we think you're going to like it here.

Working harder, working smarter

For over 180 years Volvo has been a pioneer in the design and manufacture of machines which set the standard for efficiency, performance and uptime. Across our range of excavators, wheel loaders and haulers, our reputation for engineering excellence is unrivalled, which means whatever your operation or application, we can provide a total fleet solution to help you succeed.

Building on our proud history, the Volvo Concept Lab continues to create cutting-edge ideas and innovative concepts, to ensure we offer customers machines which work harder and smarter long into the future.



Solutions for you

Our industry leading machines are just the start of your relationship with Volvo. As your partner, we have developed an extensive range of additional solutions to help you improve uptime, boost productivity and reduce costs.

Designed for your business

Our products and services are designed to complement your machine's performance and boost your profitability. Simply put, we offer some of the best guarantees, warranties and technological solutions in the industry today.

There when you need us

Whether you're buying new or used, our global network of dealers and technicians offer around-the-clock support, including machine monitoring and world-class parts availability. It's the basis of everything offered by Volvo Services, so you can be confident we've got you covered right from the start.

BUILDING TOMORROW

R100

Rigid Haulers

Operators choice

- Volvo Smart View: 360° visibility
- Air-suspended seat positioned for optimum visibility
- Ergonomic displays and fingertip controls
- Low noise and vibration levels

Safety at the center

New Volvo Dynamic Shift Control provides automatic adaptive shift scheduling for premium performance and fuel efficiency measures.

Access more uptime

- Designed for quick and safe access
- Grouped service points, accessible from the ground and service platform
- CareTrack telematics system (option)

Keep hauling

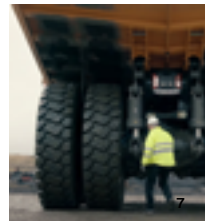
- 95-tonne payload
- Class-leading rimpull
- Powerful Volvo engine: high torque at low rpm
- On-Board Weighing system (option).

Drive your costs down

New ROPS / FOPS compliant operator cab. New operator interface and ergonomic layout with Volvo Smart View for safe and easy operation.



		R100
Payload capacity	kg	95 000
Body Volume, SAE 2:1 heap	m ³	60.40
Net weight	kg	71 280
Gross weight	kg	166 280
Engine	Cummins QST30 aftercooled Stage V / Tier 4f, 783KW	
Engine emission	Tier 4f / Stage V	
Max. engine gross power	kW	783
... at engine speed	r/min	2 100
Max. SAE J1349 gross torque	Nm	4 629
... at engine speed	r/min	1 300
Max. speed	km/h	50



R70D

Rigid Haulers

Move more – faster

Combining power, effective gearing, and optimum weight distribution, our rigid haulers cut cycle times.

Do more with less fuel

Reduce your number one operating cost thanks to the electronic integration between the engine and transmission, and load sensing hydraulics.



Safe performer

Experience fast and safe hauling with the standard transmission and brake retarder, providing total control when operating on steep gradients.

Key to a low cost operation

Drive your operating costs down with proven components from Volvo, durably designed to withstand the test of time..

		R70D
Payload capacity	kg	65 000
Body Volume, SAE 2:1 heap	m ³	41.5
Net weight	kg	49 573
Gross weight	kg	114 573
Engine		MTU-2000TA
Engine emission		Tier 2 / Stage II
Max. engine gross power	kW	567
... at engine speed	r/min	2 100
Max. SAE J1349 gross torque	Nm	3 323
... at engine speed	r/min	1 350
Max. speed	km/h	57



A60H

Articulated Haulers

Operator's choice

Its comfortable cab and ease of operation, even in adverse conditions, makes operators choose this machine.

Uptime

Designed for heavy hauling in severe off-road operation, its long service life, quality, reliability and durability is everything you expect from a Volvo.

Productivity

The A60H can move more tonnes per hour and give a 100% in all conditions.



Profitability

The state-of-the-art design allows for more capacity while improving fuel efficiency so you can move more for less.

		A60H
Payload capacity	kg	55 000
Body volume, SAE 2:1 heap	m ³	33.6
Net weight	kg	43 750
Gross weight	kg	98 750
Engine		Volvo D16J
Max Engine gross power	kW	470
. . . at engine speed	r/min	1 800
Max SAE J1349 gross torque	Nm	2 960
. . . at engine speed	r/min	1 050
Max. speed	km/h	55



A40G

Articulated Haulers

Fuel efficiency guaranteed

Powered by the world-renowned Volvo engine delivers excellent fuel efficiency without compromising on power or performance.

Operator's choice

Its comfortable cab and ease of operation, even in adverse conditions, makes operators choose this machine.



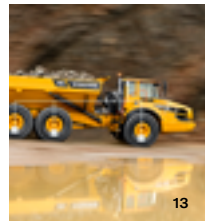
Uptime

Designed for heavy hauling in severe off-road operation, its long service life, quality, reliability and durability is everything you expect from a Volvo.

Productivity

Move more tonnes per hour and give a 100% in all conditions.

		A45G FS	A45G	A40G	A35G	A30G	A25G
Payload capacity	kg	41 000	41 000	39 000	34 500	29 000	25 000
Body volume, SAE 2:1 heap	m ³	25.1	25.1	24	21.2	17.8	15.3
Net weight	kg	30 500	30 100	29 900	28 950	23 300	22 450
Gross weight	kg	71 500	71 100	68 900	63 450	52 300	47 400
Engine		Volvo D16J	Volvo D16J	Volvo D13J	Volvo D13J	Volvo D11M	Volvo D11M
Max Engine gross power	kW	357	357	350	336	265	235
... at engine speed	r/min	1 800	1 800	1 900	1 900	2 000	2 100
Max SAE J1349 gross torque	Nm	2 576	2 576	2 525	2 407	2 040	2 040
... at engine speed	r/min	1 050	1 050	1 050	1 200	1 200	1 100
Max. speed	km/h	57	57	57	57	53	53



L350H

Wheel Loaders

Load Assist

Suite of apps accessed from the 10"

Volvo Co-Pilot display

- On-Board Weighing
- Operator Coaching
- Tire Pressure Monitoring System

More uptime

- Engine side hood panels, easily accessed cooling package
 - Maintenance-free rear axle trunnion bearings

Faster and more fuel efficient

- Up to 15% greater fuel efficiency thanks to 3rd generation OptiShift
 - Increased tractive force up to 22%
 - Compatible with HVO alternative fuel

Operator in focus

- Remote-controlled door opening
- Choice of seats available with a 3-point seatbelt
 - Secondary steering system
 - Choice of three hydraulic modes



Built for demanding jobs

- Reinforced upper center hinge bearing
- Updated frames to accommodate new Volvo transmission and axles
- Heavy-duty axles with fully floating shafts planetary hub reduction
- Proven Z-bar lifting arm with double sealing on each of the pins

		L350H
Static tipping load at full turn	kg	34 440
Bucket capacity	m ³	6.2-12.7
Log grapples	m ²	-
Operating weight	kg	50 000 - 56 300
Breakout force	kN	457
Engine		Volvo D16J
Max power at	r/min	1 800
... SAE J1995 gross	kW	-
... ISO 14396 gross	kW	-
... ECE R120 net	kW	397
... ISO 9249, SAE J1349 net	kW	395
Max torque at	r/min	1 400
... SAE J1995 gross	Nm	2 550
... ISO 9249, SAE J1349 net	Nm	2 532
Tires		35/65 R33, 875/65 R33

Based on machine configuration: Based on Rock bucket: 6.9 m³ with Teeth and Segments / Standard boom



L260H

Wheel Loaders

Increase your fuel savings by 10%

- Rimpull control
- New generation OptiShift
- Dry P-brake
- Saved hydraulic pump power
- Eco pedal
- Load Assist, powered by Volvo Co-Pilot

Fully loaded

- Redesigned Rock bucket – holds 11.5% more material
- New Rehandling bucket – up to 5% greater productivity
- Custom built attachments
- Z-bar lifting arm with double sealing on each pin

Built for the job

- Bucket leveling function
- Three hydraulic modes
- Choice of a single or multi levers
- Comfort Drive Control

Collision Mitigation System

The optional system assists operators while working in reverse by automatically applying the brakes when the machine approaches an obstacle, helping to reduce the risk or consequences of collisions and enhance jobsite safety.

Maximize your uptime

- 1000hr engine oil change interval
- Quicker hydraulic oil fill thanks to new mounted nipple
- Delayed engine shutdown
- Easy access to the P-brake and BSS accumulators
- Tilting cab – 30° or 70°
- Electronically-operated engine hood



Boost your productivity by up to 15%

- 6% more power and 5% more torque than the L250H
- Increased wheel base, optimized weight distribution
- Next generation load sensing hydraulics
- New transmission – new converter and gear ratio
- Matched Volvo attachments

		L260H
Static tipping load at full turn	kg	23 770
Bucket capacity	m ³	5.3-10.2
Log grapples	m ²	-
Operating weight	kg	34 000 - 39 000
Breakout force	kN	328
Engine		Volvo D13J
Max power at	r/min	1 500
... ECE R120 net	kW	310
... ISO 9249, SAE J1349 net	kW	309
Max torque at	r/min	1 100
... SAE J1995 gross	Nm	2 343
... ISO 9249, SAE J1349 net	Nm	2 328
Tires		29.5 R25, 875/65 R29

Based on machine configuration: Based on 6.7 m³ STE BOE P bucket



L220H

Wheel Loaders

Boost your productivity by up to 10%

- New load sensing hydraulics
- New transmission and gear ratio
- Bucket leveling function
- Load Assist, powered by Volvo Co-Pilot
- Choice of single or multi levers

Collision Mitigation System

The optional system assists operators while working in reverse by automatically applying the brakes when the machine approaches an obstacle, helping to reduce the risk or consequences of collisions and enhance jobsite safety.

Fully loaded

- Unique Torque Parallel linkage
- Block handling
- Slag handling
- Log handling
- Rehandling – up to 5% greater productivity

Here to support you

- Genuine Volvo Parts
- Operator training
- Volvo ACTIVE CARE

Maximize your uptime

- 1000hr engine oil change interval
- Quicker hydraulic oil fill thanks to new mounted nipple
- Tilting cab, electronically-operated engine hood
- Brake wear indicators
- Outboard mounted brakes
- Replaceable breather filters



Up to 15% greater fuel efficiency

- Rimpull control
- New generation OptiShift
- Reverse By Braking
- Eco pedal
- Dry P-brake

		L220H	L180H	L150H
Static tipping load at full turn	kg	20 910	18 860	15 970
Bucket capacity	m ³	4.3 - 16.0	3.7 - 16.0	3.4 - 14.0
Log grapples	m ²	1.8 - 4.0	1.8 - 3.5	1.8 - 3.1
Operating weight	kg	31 200 - 33 100	27 000 - 28 400	24 100 - 25 600
Breakout force	kN	244.5	235.9	202
Engine		D13J (Stage V)	D13J (Stage V)	D13J (Stage V)
Max power at	r/min	1 300 - 1 400	1 300 - 1 400	1 300
... ECE R120 net	kW	280	251	224
... ISO 9249, SAE J1349 net	kW	279	250	223
Max torque at	r/min	1 100	1 000	1 000
... SAE J1995 gross	Nm	2 230	2 030	1 960
... ISO 9249, SAE J1349 net	Nm	2 220	2 024	1 957
Tires		29.5 R25, 875/65 R29	26.5 R25, 775/65 R29	26.5 R25, 775/65 R29

Based on machine configuration:

L220H: Based on 5.2 m³ STE PT SEG bucket

L180H: Based on 4.4 m³ STE PT SEG bucket

L150H: Based on 4.0 m³ STE PT SEG bucket



L120H

Wheel Loaders

Maximize your uptime

- 1000hr engine oil change interval
- Quicker hydraulic oil fill thanks to new mounted nipple
- Electronically-operated engine hood
- Slidable cooler installation
- Brake wear indicators
- Outboard mounted brakes
- Replaceable breather filters

Collision Mitigation System

The optional system assists operators while working in reverse by automatically applying the brakes when the machine approaches an obstacle, helping to reduce the risk or consequences of collisions and enhance jobsite safety.

Boost your productivity by up to 5%

- New transmission and gear ratio
- Choice of single or multi levers
- Choice of three hydraulic modes
- Bucket leveling function
- Optishift (Option)

Perfect your performance

- Load Assist, powered by Volvo Co-Pilot
- New rear view mirrors
- Comfort Drive Control - Option
- Radar detect system, Rear-view camera - Options

Loaded for versatility

- Unique Torque Parallel linkage
- New Rehandling bucket – up to 5% greater productivity
- Fork attachments
- Waste and recycling
- Log handling
- Custom built attachments



Up to 20% greater fuel efficiency

- Rimpull control
- New generation OptiShift
- Eco pedal
- Reverse By Braking (RBB)
- Dry P-brake
- Matched Volvo attachments

		L120H	L110H
Static tipping load at full turn	kg	12 300	11 210
Bucket capacity	m ³	2.6 - 9.5	2.6 - 9.5
Log grapples	m ²	1.3 -2.4	1.3 - 2.4
Operating weight	kg	18 500 - 21 600	18 000 - 20 700
Breakout force	kN	173.5	161
Engine		D8J (Stage V)	D8J (Stage V)
Max power at	r/min	1 500	1 800
... ISO 14396 gross	kW	203	191
... ISO 9249, SAE J1349 net	kW	203	191
Max torque at	r/min	1 450	1 450
... SAE J1995 gross	Nm	1 320	1 255
... ISO 9249, SAE J1349 net	Nm	1 317	1 250
Tires		23.5 R25, 750/65 R25	23.5 R25, 750/65 R25

Based on machine configuration:

L120H: Based on 3.3 m³ STE H T bucket

L110H: Based on 3.0 m³ STE H T bucket



L90H

Wheel Loaders

Loaded with versatility

- Torque Parallel linkage
- Volvo attachment bracket
- Range of purpose-built attachments
- Custom-built attachment
- 3rd and 4th hydraulic functions

Greater access

- Cooler installation slides out for easier cleaning
- Repositioned fill spouts for transmission and engine oil
- Ground-level access to service points
- Electronically-operated engine hood

Up to 20% more efficient

- Optional lock-up converter
- Increased top speed of 50km/h with lock-up feature
- Rimpull control
- Smart Control
- Smooth Control
- Eco pedal



Keep it moving

- 1000hr engine oil change interval
- Quick hydraulic oil fill thanks to new mounted nipple
- Improved cooling capacity
- Strong frame and central hinge
- Optional delayed engine shutdown
- Optional external axle cooling

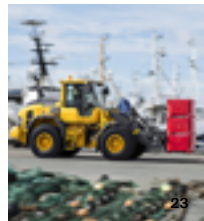
		L90H	L70H	L60H
Static tipping load at full turn	kg	9 700	8 500	7 630
Bucket capacity	m ³	2.1 - 7.0	1.8 - 6.4	1.6 - 5.0
Log grapples	m ²	1.3 - 2.4	0.9 - 1.5	0.7 - 1.3
Operating weight	kg	14 500 - 17 300	12 700 - 15 500	11 000 - 13 600
Breakout force	kN	137.7	96.5	84.9
Engine		Volvo D6J	Volvo D6J	Volvo D6J
Max power at	r/min	1 400 - 1 700	1 400 - 1 700	1 500 - 1 800
... ISO 14396 gross	kW	137	127	122
... ISO 9249, SAE J1349 net	kW	137	127	122
Max torque at	r/min	1 400	1 400	1 500
... SAE J1995 gross	Nm	934	853	820
... ISO 9249, SAE J1349 net	Nm	934	853	820
Tires		20.5 R25, 650/65 R25	20.5 R25, 600/65 R25	17.5 R25, 20.5 R25, 600/65 R25

Based on machine configuration:

L90H: 2.8 m³ (3.7 yd³) STE P BOE bucket

L70H: 2.4 m³ (3.1 yd³) STE P BOE bucket

L60H: 2.1 m³ (2.7 yd³) STE P BOE bucket



L200H HIGH LIFT

Wheel Loaders

NEW

A proven concept since 1974

- Lift arm system enabling log stacks up to 6.9 meters
- Faster travel on rough terrain
- Ability to operate on unpaved ground
- Minimize risk of damaging paved surfaces
- Log pusher (Option): up to 30% higher stack

Lift up to 27% more

- Up to 11.2 tonne lifting capacity
- Range of Volvo grapples
- Stronger rotator unit with integrated dampening system
- Wide, low-profile tires

Collision Mitigation System

The optional system assists operators while working in reverse by automatically applying the brakes when the machine approaches an obstacle, helping to reduce the risk or consequences of collisions and enhance jobsite safety.



Superb fuel efficiency

- Optimized gear ratio for fast acceleration and smooth operation
- OptiShift - Reverse By Braking, Lock-up transmission
- Eco pedal
- Fuel Efficiency Report

Straightforward servicing

- Quick oil drain/fill connectors
- Easier to inspect and clean the engine compartment
- Tilting cab
- Brake wear indicators located on the wheels
- Replaceable breather filters

		L200HHL	NEW
Static tipping load at full turn	kg	-	
Bucket capacity	m ³	-	
Log grapples	m ²	3.4 - 4.3	
Operating weight	kg	35 000 - 40 000	
Breakout force	kN	-	
Engine		Volvo D13J	
Max power at	r/min	1 300 - 1 400	
... SAE J1995 gross	kW	-	
... ISO 14396 gross	kW	-	
... ECE R120 net	kW	251	
... ISO 9249, SAE J1349 net	kW	250	
Max torque at	r/min	1 000	
... SAE J1995 gross	Nm	2 030	
... ISO 9249, SAE J1349 net	Nm	2 024	
Tires		875/65R29 alternative 775/65 R29	



L45H

Compact Wheel Loaders

The complete package

- Range of matched Volvo Attachments
- CareTrack telematics system: easy machine monitoring
- Genuine Volvo Parts
- Maintenance and Repair agreements

Maximum uptime

- Reversible cooling fan
- Maintenance-free rear axle oscillation
- Dual element air filter protecting the engine
- Grouped grease points
- DPF regeneration occurs every 500 hours

Take control

- Comfort Drive Control: lever steering (optional)
- Inch-brake pedal
- Joystick or multi-lever hydraulic pilot control

Short cycle times

- Differential lock front and rear
- Load-sensing hydraulics
- Powerful, fuel efficient Volvo engine
- Torque parallel linkage



		L50H	L45H
Engine		Volvo D4J	Volvo D4J
Engine gross power	kW	87	75
Max. torque ISO 9249, SAE J1349 net	Nm	466	416
Bucket capacity	m ³	1.6	1.4
Tipping load (ISO/DIS 14397-1)	kg	5 750	5 250
... at full turn	°	40	40
Breakout force	kN	69	71
Hydraulic lifting capacity, max.	kN	86	70
Fork payload 80%	kg	3 840	3 530
Operating weight	kg	9 500	8 770
Maximum travel speed - Standard	km/h	20-30	20-30
Maximum travel speed - High speed	km/h	40-50	40-50
Based on machine configuration:			
L50H: With 1.6 m ³ / 2.1 yd ³ general purpose bucket (TPV linkage)			
L45H: With 1.4 m ³ / 1.83 yd ³ general purpose bucket (TPV linkage)			



L35G

Compact Wheel Loaders

Easy and safe operation

- All-round visibility
- Adjustable steering column
- Single inching braking pedal
- FOPS/ROPS certified cab



Versatility

- Compact design minimizes transit time
- Volvo attachments brackets: efficient attachment changes
- Range of matched Volvo buckets, forks, grapples and material handling arms

Fast cycle times

- Articulated oscillating joint and 100% different locks secure outstanding traction
- Portal axles design provides industry-leading ground clearance
- Independent hydraulic pumps enable simultaneous lifting and steering with no impact on boom speed
- Z-bar delivers high-breakout force and excellent parallel movement for bucket and forks applications

Enhanced uptime

- 100 hours lift frame greasing interval
- Easily accessed service points
- Genuine Volvo Parts: retain Volvo quality
- Control service costs with a Customer Support Agreement

		L35G	L30G
Engine		D3.3H	D3.3H
Engine gross power	kW	55.4	55.4
Max. torque ISO 9249, SAE J1349 net	Nm	-	-
Bucket capacity	m ³	1.2	1
Tipping load (ISO/DIS 14397-1)	kg	4 350	3 850
... at full turn	°	40	40
Breakout force	kN	60.5	61
Hydraulic lifting capacity, max.	kN	61.5	57
Fork payload 80%	kg	2 600	2 400
Operating weight	kg	6 100	5 500
Maximum travel speed - Standard	km/h	20	20
Maximum travel speed - High speed	km/h	30	30
Based on L35G with cabin, 405/70 R20 tires Z-bar linkage and 1.2m ³ General purpose bucket and FEMIII forks.			
Based on L30G with cabin, 365/80 R20 tires and 1m ³ General purpose bucket.			



L25 ELECTRIC

Compact Wheel Loaders

NEW

Proven performance

- High lifting and breakout forces, excellent parallel movement, superior roll-back and dump angle
- Rigid planetary axles with 100% switchable differential for maximum traction and minimal tire wear
- Articulating-oscillating joint for best off-road capability and stability

A new level of wellness

- Low vibration, low noise levels: improved working conditions
- Wide 3-point cab access
- Best all-round visibility
- Intuitive interface, Electro-hydraulic controls

Open up new opportunities

- Perfect fit for noise sensitive areas
- Ability to work out of standard hours
- Zero-tailpipe emissions: work indoors and in low-carbon areas
- Enhanced working conditions

The best batteries

- Lithium-Ion 48V battery - 39kWh capacity
- Enables fast charging possibilities – From 0 to 100% in up to 2 hours
- Theft protected fixed battery
- Over 85% capacity left after 2000 charge cycles (expected over 10 years)



Work anytime, anywhere

- Attachment bracket with integrated 3rd hydraulic function
- Customizable working mode including traction force and sensitivity

		L25 NEW	L20 NEW
Electric motor driveline (peak)	kW	36	28
Electric motor working hydraulics (peak)	kW	32	32
Standard bucket capacity	m ³	0.9	0.8
Kinematics with attachment bracket design	Blank	Z	P
Tipping load (ISO/DIS 14397-1)	kg	3 350	3 000
...at full turn	°	38	38
Breakout force	kN	54.5	35
Hydraulic lifting capacity, max	kN	55	35
Fork payload 80%	kg	2 000	1 800
Max. dump height	mm	-	2 495
Operating weight	kg	5 080 - 5 260	4 500
Maximum travel speed - Standard	km/h	16	-
Battery voltage	V	48	48
Battery capacity	kWh	40	-
Battery capacity (standard)	kWh	-	33
Battery capacity (optional)	kWh	-	40
On board charging time 230 VAC 16A	hours	~12	<6h
Off board charging time 400 VAC 32A	hours	~2	<2h
Indicative runtime (depending on application)	hours	Up to 8 hours	Up to 8 hours

Based on machine configuration: L25 with z-bar linkage and 335/80 R18 tyres, 0.9 m³ General Purpose bucket



PL4809E

Pipelayers

Infinite placement possibilities

Achieve infinite pipe placement possibilities with the 360° swing capacity and stability up to a 35° slope.

Time is money – get to work fast

Move around and between jobsites with ease without having to disassemble the boom and counterweight.

Ensuring load safety

The Load Management System (LMS) indicates the load status and signals when the load limit has been reached.

Cost-effective maintenance

Maximize uptime with easy-to-access service points and by tracking your machine remotely via CareTrack.

Best for productivity and stability

Handle large, heavy pipes with the most stable and safe pipelayers in their class in all conditions, even on slopes.

The highest quality at every part

Genuine Volvo Parts are extensively tested and approved to ensure the highest quality.

Industry-leading safety

Increase operator productivity and safety with the ROPS-safety certified cab and standard Load Management System.



		PL4809E	PL3005E
Operating weight	kg	58 600 - 64 600	35 030
Engine gross power	kW	284	180
. . . at engine speed	r/min	1 800	1 800
Max. tipping capacity	t	110	55
Rated capacity	t	50	31
Std. boom length	m	9.2	7.43
Extended boom length	m	11.2	9.24
Max. working slope	°	35	35



EC750E_{HR}

Crawler Excavators

Multi-use demolition machine

- Work underground and under water
- Offered with two high-reach demolition boom sets and one digging boom set with extension
- Carry a tool of to 3.6 tonnes when working at maximum height
- Second high-reach configuration has 26m maximum pin height for use with larger 5 tonne tool
- Digging boom set with 4.4m extension allows for 18m pin height while using a tool up to 6.5 tonnes

Patented hydraulic modular joints

- Change from high reach to digging configuration using two-pin hydraulic lock
- Second hydraulic modular joint on extension boom
- Common interface between extension boom and digging boom for quick configuration

Easy to transport

- Retractable undercarriage
- Easy-to-remove track frames
- Remove full counterweight with additional counterweight in one go hydraulically

Outstanding stability

- All-new undercarriage specifically developed for demolition segment – heavier and wider than the larger EC950E undercarriage
- 0.5m longer than conventional EC750E
- Impressive track gauge of 4.3m
- Total machine weight of 104 tonnes



		EC750EHR	EC480EHR	EC380EHR
Operating weight	kg	95 875 - 109 583	61 305 - 68 090	48 615 - 54 650
Engine gross power	kW	393	284	230
... at engine speed	r/min	1 800	1 800	1 700
Max. allowable tool weight	kg	5 000*	3 500*	3 000*
Max. pin height	mm	26 000*	28 140*	23 060*
Max. pin reach	mm	15 589*	16 090*	14 490*
Operating angle	°	24*	18.8*	24.4*
Max. cab tilting angle	°	30	30	30
Track gauge				
... Fixed undercarriage - Extended	mm	-	-	2 740
... Fixed undercarriage - Retracted	mm	-	-	-
... Undercarriage mechanically retractable - Extended	mm	-	2 890	-
... Undercarriage mechanically retractable - Retracted	mm	-	2 390	-
... Undercarriage hydraulically retractable - Extended	mm	4 300	3 380	3 380
... Undercarriage hydraulically retractable - Retracted	mm	3 050	2 390	2 390

EC750EHR: Operating weight may vary by market based on the option and attachment configuration.

*Machine with 26 m 3-piece demolition boom / Undercarriage hydraulically retractable.

EC480EHR, EC380EHR : Operating weight may vary by market based on the option and attachment configuration.

*Machine with 3-piece demolition boom / Undercarriage hydraulically retractable.



High visibility, protected cab

Industry renowned Volvo Care Cab

- Frame-mounted Falling Object Guards
- Roll Over Protection Structure, meeting ISO 12117-2:2008 requirements
- P5A grade glazing on single-piece front window and roof window, offering high impact protection which meets EN356 standards
- Washer and wiper on windshield and roof window

Heavy duty protection

- Ultimate protection from damage and debris, securing uptime and long-term performance
- Side Impact Protection Structure (SIPS): choice of fixed cab entrance and thicker SIPS or the new foldable cab entrance and narrow SIPS to facilitate transportation (EC380E Straight Boom)
- Heavy-Duty or eXtreme-Duty undercover
- Full track guard

Dust suppression system

- The unique Volvo system captures dust, removing the need for a separate truck for pumping water
- 30 liters per minute water pump
- Four nozzles fitted on the arm create a fine mist which encapsulates the dust

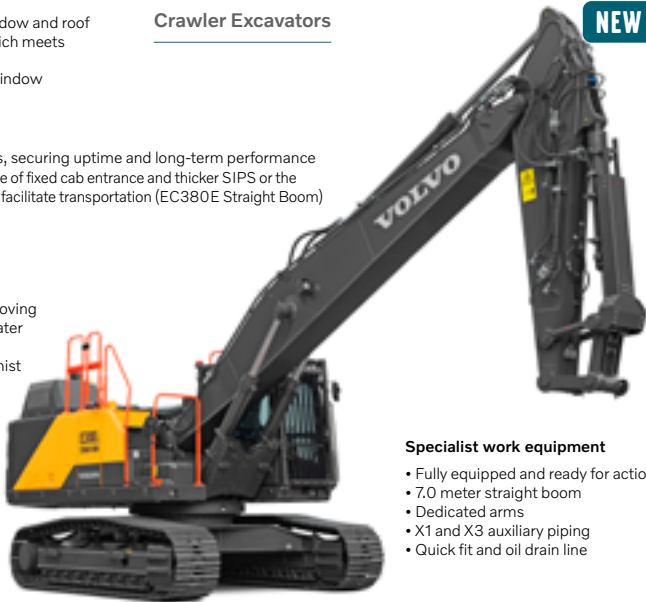
Heavy counterweight

- Outstanding stability, yet easy to transport
- A hydraulically removable counterweight enables easy transportation (EC380E Straight Boom)

EC300E STRAIGHT BOOM

Crawler Excavators

NEW



Specialist work equipment

- Fully equipped and ready for action
- 7.0 meter straight boom
- Dedicated arms
- X1 and X3 auxiliary piping
- Quick fit and oil drain line

		EC380E Straight Boom NEW	EC300E Straight Boom NEW
Operating weight	kg	37 800 - 43 000	29 300 - 32 700
Gross power	kW	230	189
. . . at engine speed	r/min	1 700	1 600
Track length	mm	5 180	4 865
Track gauge	mm	2 740 (EC380EL) / 2 390 (EC380ENL)	2 590 (EC300EL) / 2 390 (EC300ENL)
Max. pin height	mm	11 500	12 100
Max. pin reach	mm	10 100	10 800
Max. pin depth	mm	4 500	6 000
Max. tool weight	kg	3 100	4 800
Breakout force, SAE J1179 (Normal)	kN	198	168
Max. digging reach	mm	10 500	10 700
Max. digging depth	mm	6 800	7 300
EC380E: Based on machine configuration: EC380E Straight Boom: Long crawler, 6.45 m Boom, 2.6 m Arm, 800 mm Shoe, 6 700 kg CWT			
EC300E: Based on machine configuration: EC300E Straight Boom: 6.0 m Boom, 2.97 m Arm, 600 mm Shoe, 4 950 kg CWT			



EC950F

Crawler Excavators

Robust protection

- Heavy-duty boom and arm
- Additional underside plate
- Floating pins on the bucket connection

Solid stability

- Wide track gauge
- Long track length
- Retractable undercarriage
- Optimized counterweight

The operator's choice

- Spacious and quiet cab, ergonomic controls
- Boom-swing priority function
- Dig Assist, powered by Volvo Co-Pilot (Option)

Versatility

- General Purpose, Heavy-Duty and Extreme-Duty buckets
- Range of wear parts: teeth, side cutters, segments and wear shrouds
- Custom-Built Attachments for specific applications
- Attachment Management System

Efficiently productive

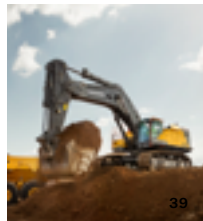
- Powerful 450kW Volvo D16 engine
- Fully electro-hydraulic system
- Constant high hydraulic pressure
- ECO mode, Work modes

Safety first

- High-visibility handrails
- Anti-slip plates
- Central and surrounding walkways
- Rear and side view cameras, Volvo Smart View (Options)



		EC950F
Operating weight	kg	91 275 - 94 810
Gross power	kW	449
. . . at engine speed	r/min	1 650
Bucket capacity	m ³	3.9 - 7.0
Lifting capacity, along undercarriage	kg	34 900
. . . at reach / height	m	6.0 / 1.5
Max. digging reach	mm	12 270
Max. digging depth	mm	7 120
Breakout force, SAE J1179 (Normal)	kN	424
Breakout force, SAE J1179 (Boost)	kN	-
Tear out force, SAE J1179 (Normal)	kN	408
Tear out force, SAE J1179 (Boost)	kN	-
Overall width	mm	4 467
Tail swing radius	mm	4 700
Based on machine configuration: 7.25m boom, 2.95m arm, 16 200kg CWT		



EC550E

Crawler Excavators

Work harder for longer

- Ultra-durable and reinforced undercarriage, upper and lower frame
- Electric connectors exceeding Ingress Protection 69K water-proofed standards
- 1 000hr engine oil and engine oil filter change intervals

Big on efficiency

- Electro-hydraulic system with Independent Metering Valve Technology: +25% fuel efficiency
- Engine pump optimization
- Optimized hydraulic piping & size routing

True 50-tonne performance

- Big buckets, 20% more productivity
- Highest engine power of its class
- Superior swing torque and tractive force
- Digging forces/lifting capacity commonly found in a 60-tonne machine
- Handle heavier loads with the longer/wider EC550E undercarriage
- Perfect match to 30-40t Volvo Articulated Haulers

Get around safely

- ROPS cab: spacious, ergonomic and low-noise
- Rear and side cameras, Volvo Smart View
- High-visibility cab, One-piece front window
- Bolted anti-slip plates
- Foldable walkways
- High visibility handrails/guardrails

Ultimate control

- Boom/Swing and Boom/Travel priority
- Adjustable boom down speed
- Boom and arm bouncing reduction
- Creep mode: carry with care
- Comfort Drive Control: joystick steering



		EC750E	EC550E	EC530E	EC480E	EC380E
Operating weight	kg	73 500-75 300	53 740 - 58 000	54 000 - 56 400	45 500 - 53 300	37 800 - 43 000
Gross power	kW	393	340	340	284	230
... at engine speed	r/min	1 800	1 600	1 600	1 800	1 700
Bucket capacity	m ³	3.3 - 5.16	2.4 - 4.2	2.4 - 4.2	1.55 - 3.3	0.87 - 2.33
Lifting capacity, along undercarriage	kg	30 760	20 780	20 780	17 590	15 940
... at reach / height	m	6.0 / 1.5	6 / 1.5	6 / 1.5	6.0 / 1.5	6.0 / 1.5
Max. digging reach	mm	11 460	12 180	12 180	12 146	10 545
Max. digging depth	mm	7 210	7 690	7 690	7 828	6 785
Breakout force, SAE J1179 (Normal)	kN	323	251	251	230	198
Breakout force, SAE J1179 (Boost)	kN	342	269	269	251	215
Tear out force, SAE J1179 (Normal)	kN	311	220	220	196	195.9
Tear out force, SAE J1179 (Boost)	kN	329	235	235	215	2 129
Overall width	mm	4 290	3 900	3 490	3 640	3 540
Tail swing radius	mm	41 40	3 880	3 880	3 800 / 3880	3 600

Based on machine configuration:

EC750E: 6.6m boom, 2.9m arm, 12 100kg CWT

EC550E: EC550EL with RETRACTABLE undercarriage, 7.0 m boom, 3.35 m arm, 10 600 kg counterweight

EC530E: EC530EL with RETRACTABLE undercarriage, 7.0 m boom, 3.35 m arm, 10 600 kg counterweight

EC480E: Long crawler, Boom 7.0m/23'; Arm 3.35m/11'; Shoe 900mm/36"; CWT 9 050kg/19,960lb

EC380E: Long crawler, Boom 6.45m/21'2"; Arm 2.6m/8'6"; Shoe 600mm/24"; CWT 6 700kg/14,770lb



EC200E

Crawler Excavators

Safety first

- ROPS cab
- High visibility hand rails
- Anti-slip steps and easy access via right-hand side

Easy servicing

- Grouped filters accessed at ground level
- Foldable guard rails
- Long service intervals
- Real-time service alerts
- Single layer cooling system

Built to last

- Durable boom and arm
- Protected components
- Heavy counterweight
- Proactive machine monitoring

Down to business

- Purpose built 20 tonne machine
- Optimized engine
- Hydraulic harmony
- ECO Mode
- Optional auxiliary hydraulic piping
- CareTrack machine reports and alerts

Operator's choice

- Comfortable low-noise cab
- Easy-to-use controls
- Ergonomic layout

A true all-rounder

- Matched Volvo attachments
- Quick coupler
- Breaker
- General Purpose buckets, Ditching buckets
- Tiltrotator

Impressive performance

- Digging and lifting force
- Power boost
- Fast cycle times



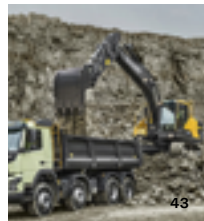
		EC350E	EC300E	EC250E	EC220E	EC200E
Operating weight	kg	34 690 - 40 600	30 080 - 36 850	26 010 - 31 650	20 470 - 25 760	19 870 - 24 580
Gross power	kW	220	189	168	129	115
... at engine speed	r/min	1 600	1 600	1 600	1 800	2 000
Bucket capacity	m ³	0.87 - 2.33	0.52 - 2.06	0.56 - 1.76	0.48 - 1.44	0.275 - 1.1
Lifting capacity, along undercarriage	kg	13 470	11 460	10 050	7 570	7 320
... at reach / height	m	6.0 / 1.5	6.0 / 1.5	6 / 1.5	6.0 / 1.5	6.0 / 1.5
Max. digging reach	mm	11 123	10 710	10 340	9 930	9 993
Max. digging depth	mm	7 490	7 340	7 060	6 730	6 781
Breakout force, SAE J1179 (Normal)	kN	177	165	145	141	125
Breakout force, SAE J1179 (Boost)	kN	192	179	157	149	132
Tear out force, SAE J1179 (Normal)	kN	201	133	114	104	101
Tear out force, SAE J1179 (Boost)	kN	219	144	124	110	107
Overall width	mm	3 190	3 190	3 190	2 990	2 990
Tail swing radius	mm	3 600	3 120	3 075	2 850	2 850

Based on machine configuration:

EC350E: EC350E L; Boom 6.45m; Arm 3.2m

EC220E: 5.7 m/18'8" boom; 2.9m/9'6" arm

EC200E: EC200E L / Boom 5.7m (18'8") GP / Arm 2.9m (9'6") GP / Shoe 700mm (28") / CWT 4 200kg (9,259lb)



EC350E HYBRID

Crawler Excavators

NEW

Simple solution, big savings

- 100% Volvo engineered hydraulic hybrid
- 17% greater fuel efficiency*
- 15% lower fuel consumption*
- 15% reduction in CO₂ emissions*

Rapid payback

- When working in dig and dump applications, the EC350E Hybrid is a straightforward solution with fast payback.
- Save fuel, lower emissions and boost the profitability of your operation.



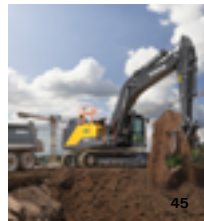
*Efficiency and savings may vary based on operator, application and conditions.

		EC380E HYBRID NEW	EC350E HYBRID NEW	EC300E HYBRID NEW	EC250E HYBRID NEW
Operating weight	kg	37 800 - 43 000	36 260 - 38 290	30 990 - 32 720	27 150 - 28 310
Gross power	kW	230	220	189	168
... at engine speed	r/min	1 700	1 600	1 600	1 600
Bucket capacity	m ³	0.83 - 2.53	0.87 - 2.33	0.52 - 2.06	0.56 - 1.76
Lifting capacity, along undercarriage	kg	15 940	13 470	11 460	10 050
... at reach / height	m	6.0 / 1.5	6.0 / 1.5	6 / 1.5	6 / 1.5
Max. digging reach	mm	10 545	11 123	10 710	10 340
Max. digging depth	mm	6 785	7 490	7 340	7 060
Breakout force, SAE J1179 (Normal)	kN	198	177	165	145
Breakout force, SAE J1179 (Boost)	kN	215	192	179	157
Tear out force, SAE J1179 (Normal)	kN	196	201	133	114
Tear out force, SAE J1179 (Boost)	kN	213	219	144	124
Overall width	mm	3 540	3 190	3 190	3 190
Tail swing radius	mm	3 600	3 600	3 120	3 075

Based on machine configuration:

EC380E Hybrid: Long crawler, Boom 6.45m/21'2"; Arm 2.6m/8'6"; Shoe 800mm/32"; CWT 6 700kg/14,770lb

EC350E Hybrid: EC350E L; Boom 6.45 m; Arm 3.2 m



EC180E

Crawler Excavators

Built to last

All detail – no matter how small – is overlooked. Silicone caulking is used to prevent rust, waterproof harnesses and connections have been installed – as well as heavy-duty door hinges and bolted-on protection for the framework lights.

Optimized hydraulics system

Designed to perfectly match the engine power, reduce power loss, and improve controllability and response time.

Human Machine Interface (HMI)

All machine interfaces are ergonomically positioned and designed for optimum control and efficiency.

Service access

The E-series features a new convenient and safe access – such as guardrails – to check the hydraulic tank, fuel tank and AdBlue®. This is in addition to the easily accessible side entry, through a wide compartment door.

Ultimate tool carrier

Designed to not only be compatible with a range of attachments, but also to enhance their performance by easily and quickly switching to accommodate any needs.



		EC180E	EC160E	EC140E
Operating weight	kg	16 430 - 20 860	16 430 - 20 860	13 170 – 16 980
Gross power	kW	110	110	90
. . . at engine speed	r/min	2 000	2 000	2 000
Bucket capacity	m ³	0.3 - 0.96	0.3 - 0.96	0.33 - 1.01
Lifting capacity, along undercarriage	kg	4 880	4 880	3 810
. . . at reach / height	m	6.0 / 1.5	6.0 / 1.5	6.0 / 1.5
Max. digging reach	mm	8 980	8 980	8 360
Max. digging depth	mm	6 070	6 070	5 560
Breakout force, SAE J1179 (Normal)	kN	115.3	115.3	91.1
Breakout force, SAE J1179 (Boost)	kN	121.9	121.9	96.6
Tear out force, SAE J1179 (Normal)	kN	81.7	81.7	63.5
Tear out force, SAE J1179 (Boost)	kN	86.4	86.4	67.4
Overall width	mm	2 800	2 800	2 590
Tail swing radius	mm	2 550	2 550	2 200

Based on machine configuration:

EC180E: 5.2 m/17'1" boom; 2.6m/8'6" arm

EC160E: : 5.2 m/17'1" boom; 2.6m/8'6" arm

EC140E: 4.6 m/15'1" boom; 2.5m/8'2" arm



ECR355E

Crawler Excavators

Short swing, solid stability

The excavator features precisely positioned components for optimal balance, as well as an optional dozer blade.

Mix and match

Volvo's durable attachments have been purpose-built to deliver maximum productivity and long service life in combination with Volvo machines.

Lift more, dig more

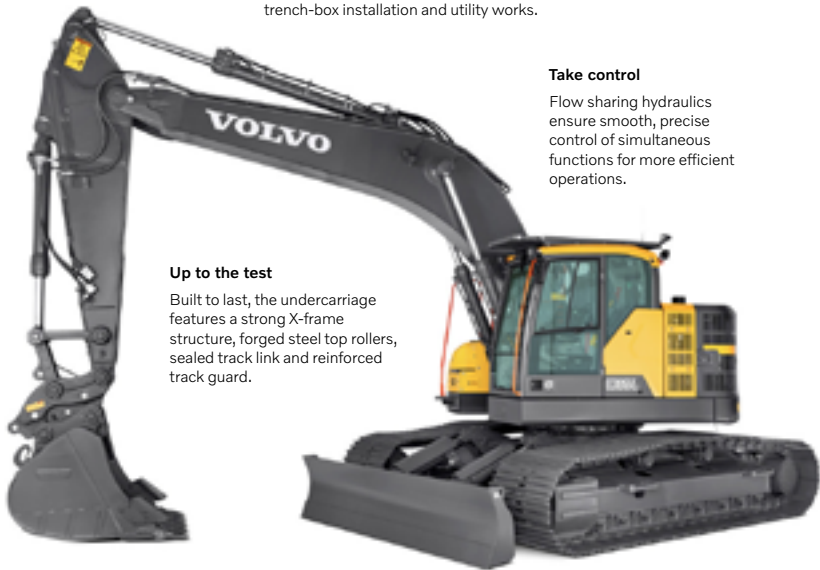
Offering an increase in both lifting capacity and digging force, the ECR355E is ideal for pipelaying, trench-box installation and utility works.

Take control

Flow sharing hydraulics ensure smooth, precise control of simultaneous functions for more efficient operations.

Up to the test

Built to last, the undercarriage features a strong X-frame structure, forged steel top rollers, sealed track link and reinforced track guard.



		ECR355E	ECR235E	ECR145E
Operating weight	kg	34 100 - 38 000	23 700-27 840	14 435-17 900
Gross power	kW	180	129	90
. . . at engine speed	r/min	1 800	1 800	2 000
Bucket capacity	m ³	0.92 - 2.06	0.36-1.44	0.25-0.82
Lifting capacity, along undercarriage	kg	12 680	7 790	3 730
. . . at reach / height	m	6.0 / 1.5	6.0 / 1.5	6.0 / 1.5
Max. digging reach	mm	10 741	9 890	8 360
Max. digging depth	mm	6 818	6 755	5 530
Breakout force, SAE J1179 (Normal)	kN	165	125	80.5
Breakout force, SAE J1179 (Boost)	kN	179	132.2	85.4
Tear out force, SAE J1179 (Normal)	kN	133	101.3	62.1
Tear out force, SAE J1179 (Boost)	kN	144	107.1	65.8
Overall width	mm	3 340	3 090	2 690
Tail swing radius	mm	1 900	1 810	1 494

Based on machine configuration:

ECR355E: ECR355EL, 2-piece boom 6.2 m, arm 2.55 m, shoe 700 mm

ECR235E: 5.7m boom, 2.9m arm / 18'8" boom, 9'6" arm

EC145E: 4.6m boom, 2.5m arm / 15'1" boom, 8'2" arm



ECR58

Compact Excavators

The industry's best cab

- Most spacious cab in the industry
- Seat and consoles suspended together
- Large travel pedals, storage boxes, 12V and USB ports
- Best-in-class all-around visibility
- Quiet in-cab environment

Precision controls

- Intuitive jogwheel and 5" color display
- Proportional fingertip controls
- Smooth combined movements

Take on more

- Easy to transport and access tight spaces
- Factory-installed auxiliary hydraulics
- Customizable hydraulic flow settings
- Tilt Quick Coupler
- Steelwrist® Tiltrotator and factory-fit control system
- Range of Volvo Attachments

Top of the class

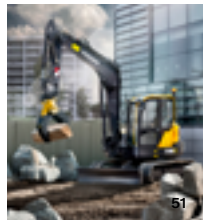
- Low center of gravity for excellent stability
- Superior breakout/tear out forces and lifting capacities
- Impressive tractive force
- Short swing radius

Outstanding fuel efficiency

- Advanced hydraulic system with load sensing and flow sharing
- Eco Mode
- Auto-engine shutdown
- Engine auto-idle



		ECR88D	ECR58
Engine		Volvo D2.6H	D2.6H
Gross power	kW	43	35.5
Net power	kW	41	35
. . . at engine speed	r/min	2 000	2 200
Operating weight	kg	8 810 - 9 714	5 840
Operating weight - canopy version	kg	-	-
Bucket capacity	m ³	0.079 - 0.333	0.11
Travel speed	km/h	2.6 / 5.2	2.6 / 4.5
Slewing speed	r/min	8.3	8.7
Breakout force	kN	50.7 / 50.4	41.9
Tear out force (arm breakout force)	kN	38.9 / 33.8	28.4
Overall width	mm	2 300	2 000
Overall length	mm	6 370 / 6 420	5 193
Main hydraulic pump max. flow	l/min	2 x 68 + 54	143
Boom swing angle, left / right	°	70 / 60	75 / 55



ECR50

Compact Excavators

Durable by design

- Zero tail swing
- In-track boom swing
- New digging equipment
- Undercarriage and hoods from larger size machine

Versatile performer

- True 5 tonne machine
- Stability and hydraulic performance
- Pre-set hydraulic modes and multiple auxiliary line options
- Compatible with a wide range of attachments

Maximum uptime

- 50-hour greasing intervals
- Patented multifunction hydraulic filter, protecting the hydraulic system
- Easily accessed service points, wide-opening engine hood
- Auto engine shutdown
- Genuine Volvo Parts

Intuitively efficient

- Simple controls layout
- Intuitive jogwheel and 5" color display
- Proportional fingertip controls
- Large travel pedals
- Automatic two-speed travel



		ECR50	ECR40D	ECR35D	ECR25D	ECR18E
Engine		D2.4H	Volvo D1.7A	Volvo D1.7A	D1.1A	D0.9A
Gross power	kW	31.20	18.50	18.50	15.60	12.00
Net power	kW	30.70	21.50	21.50	14.80	11.20
... at engine speed	r/min	2 200	2 200	2 200	2 400	2 300
Operating weight	kg	5 050	3 880 - 4 460	3 520 - 4 090	2 490 - 2 960	-
Operating weight - canopy version	kg	-	3 745 - 4 460	3 385 - 4 090	2 400 - 2 870	1 700
Bucket capacity	m ³	0.11	0.052 - 0.150	0.052 - 0.150	0.034 - 0.119	0.014 - 0.051
Travel speed	km/h	2.7 / 4.4	2.7 / 4.5	2.7 / 4.5	2.4 / 4.5	1.8 / 3.5
Slewing speed	r/min	8.50	9.00	9.00	9.40	9.50
Breakout force	kN	36.20	32.90	30.70	22.30	12.90
Tear out force (arm breakout force)	kN	25.90	23.70	20.70	17.80	7.95
Overall width	mm	2 000	1 780	1 780	1 550	995 / 1 352
Overall length	mm	5 198	4 780	4 660	3 924 / 4 045	3 431
Main hydraulic pump max. flow	l/min	120.00	103.00	103.00	58.00	34.00
Boom swing angle, left / right	°	75 / 55	76 / 56	76 / 56	72 / 56	-

Based on machine configuration:

ECR50: With 300mm rubber tracks and short arm

ECR40D: With 300mm rubber tracks and short arm

ECR35D: With 300mm rubber tracks and short arm

ECR25D: Operating weight with 75 kg operator, 250 mm rubber track, short arm and 500 mm direct fit bucket.



ECR25 ELECTRIC

Compact Excavators

Zero emission electric power

- No emission locally
- Sound level down tremendously
- Maintenance free battery
- Low electricity cost
- No power consumption when machine not working

New levels of comfort

- Low vibration
- Color display with jogwheel navigation
- Intuitive and easier to operate
- Full LED lighting
- Blows less dust

Everything you'd expect from Volvo

- Monthly greasing only
- Patented hydraulic filter
- Hoses protected inside boom and arm
- Automatic travel speed

Work anything, anywhere

- Same performance as its diesel equivalent
- Ultimate lifting capacity
- Zero-tail swing radius
- Front corner stays within tracks width
- Wide range of Volvo attachments

Get access to new markets

- Ability to work indoor
- Ability to work out of standard hours
- Ability to work full shift
- Fast charging option



		ECR25	ECR18 NEW
Operating weight	kg	2 680 - 2 780	1 765
Maximum digging depth (short/long arm)	mm	2 461 - 2 761	2 234 - 2 434
Maximum dump height (short/long arm)	mm	2 784 - 2 957	2 444 - 2 588
Travel speed, low / high	km/h	2.4 / 4.5	1.9 / 3.8
Breakout force	kN	22.3	12.9
Tear out force (arm breakout force) (short/long arm)	kN	15 - 17.7	7.95 - 6.95
Overall width	mm	1 550 - 0	995 - 1 352
Overall length (short/long arm)	mm	3 876 - 4 008	3 431 - 3 309
Main hydraulic pump max. flow	l/min	58	-
Electric motor (peak)	kW	18	-
Battery voltage	V	48	48
Battery capacity	kWh	20	16
On board charging time 230 VAC 16A	hours	~ 5 h	-
Off board charging time 400 VAC 32A	Blank	~ 50 min for 80% charge	-
Sound pressure level (L _{pA}) at operator's position	dB	74	-
Sound power level (L _{WA}) around the machine	dB	84	-
Indicative runtime (depending on application)	hours	Up to 4 hours	Up to 4 hours



EC60E

Compact Excavators

Customer Support Agreements

Customer Support Agreements offer preventive maintenance, total repairs and a number of uptime services.

Attachments versatility

The Volvo attachments range allows the machine to take on a variety of tasks for a wide range of jobs and applications.

Boosted performance

Do more in less time with increased combined digging efforts, a 10% improvement in traction, swing force and lifting capacity.

Larger cab

More space results in comfortable and relaxed operation, increasing production and reducing fatigue.



Serviceability

Ground level service access, new main control valve location, convenient greasing points and easy to clean cooling unit reduce service time.

		EC60E
Engine		D2.6H
Gross power	kW	44.3
Net power	kW	42.7
. . . at engine speed	r/min	2 200
Operating weight	kg	5 500~6 800
Operating weight - canopy version	kg	-
Bucket capacity	m ³	0.07 ~ 0.265
Travel speed	km/h	2.4 / 4.4
Slewing speed	r/min	9.5
Breakout force	kN	43.3
Tear out force (arm breakout force)	kN	28.8
Overall width	mm	1 920
Overall length	mm	5 800 / 5 865
Main hydraulic pump max. flow	l/min	2 x 60.5
Boom swing angle, left / right	°	80 / 50



EC35D

Compact Excavators

Built ready

Volvo's durable attachments have been purpose-built to deliver maximum productivity and long service life in combination with Volvo machines

ECO mode

By simply pressing a button, the unique Volvo ECO mode reduces fuel consumption by up to 10%.



Operator environment

The industry-leading, spacious Volvo FOPS1 on top, TOPS and ROPS cab boasts all around visibility, ergonomically positioned controls and excellent vibration and noise insulation.

Patented hydraulic filter

Filtration occurs when the tank is filled or topped up and before the oil returns via the drain lines. The transparent bowl enables easy oil level and contamination checks.

		EC35D	EC27D
Engine		Volvo D1.7A	Volvo D1.1A
Gross power	kW	18.5	15.6
Net power	kW	21.5	14.8
. . . at engine speed	r/min	2 200	2 400
Operating weight	kg	3 530	2 730
Operating weight - canopy version	kg	3 395	2 640
Bucket capacity	m ³	0.052 - 0.150	0.034 - 0.119
Travel speed	km/h	2.7 / 4.5	2.6 / 4.8
Slewing speed	r/min	9	9.4
Breakout force	kN	32.9	24.6
Tear out force (arm breakout force)	kN	23.7	18.1
Overall width	mm	1 780	1 550
Overall length	mm	4 620	3 933 / 3 811
Main hydraulic pump max. flow	l/min	103	65
Boom swing angle, left / right	°	76 / 56	72.5 / 53

Based on machine configuration:

EC35D: With 300mm rubber tracks and short arm

EC27D: Operating weight with 75kg operator, 300mm rubber track, short arm and 500mm direct fit bucket.



EC20E

Compact Excavators

Safety first

- High visibility entry step and cab handrail, orange seatbelt
- 4 large easily accessible tie-down points on the upper frame
- Controls lock options (switch, seat operator presence or buckled seatbelt sensor)
- Easy entrance-exit to cab

Maximize profitability

- Convenient access to engine compartment thanks to hinged fuel tank
- Auto engine shutdown and auto-idle (options)
- All-around flat windows
- 50-hour greasing intervals
- Patented hydraulic filter

Small but tough

- All-around steel panels
- High-profile cast counterweight
- Protected hoses, routed inside the boom
- In-track boom swing

The complete package

- Range of Volvo buckets and quick couplers
- Matched Volvo breaker
- Genuine Volvo Parts
- Volvo Financial Services

The operator's choice

- Easy front window opening with lower window removal and storage ability
- Fingertip controls, with adjustable hydraulic flow
- Simple controls layout
- Automatic 2-speed travel
- Smooth combined movements



		EC20E	EC18E	EC15E
Engine		D0.9A	D0.9A	D0.9A
Gross power	kW	12	12	12
Net power	kW	11.2	11.2	11.2
. . . at engine speed	r/min	2 300	2 300	2 300
Operating weight	kg	1 965	1 810	1 640
Operating weight - canopy version	kg	1 881	1 732	1 556
Bucket capacity	m ³	0.028 - 0.078	0.014 - 0.051	0.014 - 0.051
Travel speed	km/h	2.5 / 4.6	1.8 - 3.5 / 2.5 - 4.6	1.9
Slewing speed	r/min	9.5	9.5	9.5
Breakout force	kN	18.3	12.9	12.9
Tear out force (arm breakout force)	kN	12.3	7.95	7.95
Overall width	mm	995 / 1 352	995 / 1 352	995
Overall length	mm	3 707	3 550	3 550
Main hydraulic pump max. flow	l/min	48	34 / 48	34
Boom swing angle, left / right	°	-	-	-



EC18 ELECTRIC

Compact Excavators

NEW



Work anytime, anywhere

Create new commercial opportunities for your business with the EC18 Electric, all while benefiting the environment and communities.

Create a better work environment

Whether working in the machine or on-site, all personnel benefit from the absence of exhaust fumes, industry leading low noise levels and the significant reduction in vibration and heat.

Make the most of every charge

Featuring industry-leading battery technology, the EC18 Electric offers up to 5 hours of runtime and comes with a range of solutions to help manage the charging process more efficiently.

Choice of charging solutions

The EC18 Electric can be recharged in as little as 1.25 hours. Choose between multiple charging solutions depending on the requirements of your operation.

		EC18 NEW
Operating weight	kg	1 960
Maximum digging depth (short/long arm)	mm	2 234 - 2 434
Maximum dump height (short/long arm)	mm	2 444 - 2 588
Travel speed, low / high	km/h	1.9 / 3.8
Breakout force	kN	12.9
Tear out force (arm breakout force) (short/long arm)	kN	7.95 - 6.95
Overall width	mm	995 - 1 352
Overall length (short/long arm)	mm	3 550 - 3 431
Battery voltage	V	48
Battery capacity	kWh	20
Indicative runtime (depending on application)	hours	Up to 5 hours



EW60E

Compact Excavators

Boosted performance

Do more in less time with outstanding combined digging efforts, powerful travel force, fluid swing force and optimal lifting capacity.

Attachments versatility

The Volvo attachments range allows the machine to take on a variety of tasks for a wide range of jobs and applications.

Larger cab

A comfortable working space results in better operation, increasing production and reducing fatigue.

Serviceability

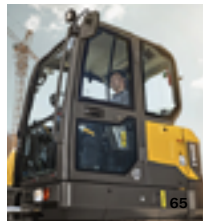
Ground level service access, including great access to the main control valve, convenient greasing points and easy to clean cooling unit reduce service time.



Customer Support Agreements

Customer Support Agreements offer preventive maintenance, total repairs and a number of uptime services.

		EW60E
Operating weight	kg	5 550~6 960
Gross power	kW	47.3
... at engine speed	r/min	2 400
Bucket capacity	m ³	0.07~0.265
Max lifting capacity	kg	3 030
... at reach / height	m	3.0/1.0
Max. digging reach	mm	6 024
Max. digging depth	mm	3 292
Breakout force (ISO) (Normal)	kN	43.3
Breakout force (ISO) (Boost)	kN	-
Max speed	km/h	20/30
Tail swing radius	mm	1 650
* Based on machine configuration: Machine with 2.9m boom, 1.6m arm, 0.142m ³ bucket, Standard counterweight, Dozer blade.		
** Chosen travel speed option may be affected by local regulations.		
*** Real Max Travel speeds may be different depending on option configurations.		



EW200E MATERIAL HANDLER

Wheeled Excavators

Configured your way

- 4m gooseneck arm or 3.5m sorting arm
- Front blade/2 rear outriggers or 4 outriggers
- Volvo Smart View, One-piece single window

Tailor-made Volvo boom and arm

- Boom cylinder dampening: enhanced stability
- Adjustable arm-in limitation
- Height limitation function
- Boom float function

The operator's choice

- Steps on the outriggers: easy cab access/egress
 - Cab raises you up to 5 meters
 - Double damped cab mounts
 - Comfort Drive Control enables joystick steering up to 19km/h

Power up, fuel down

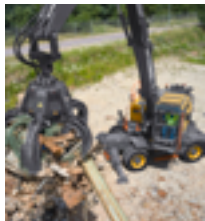
- Powerful Volvo D6 engine
- Auto engine idle, Auto engine shutdown
- ECO mode

Versatility

- Factory-installed auxiliary lines
- Range of sorting grabs and orange peel grapples, available from the Volvo factory
- Attachment Management System



		EW240E MATERIAL HANDLER	EW200E MATERIAL HANDLER
Operating weight	kg	26 000 - 26 500	22 100 - 22 850
Gross power	kW	129	129
... at engine speed	r/min	1 800	1 800
Bucket capacity	m ³	-	-
Max lifting capacity	kg	-	-
... at reach / height	m	-	-
Max. digging reach	mm	11 000 - 12 000	9 000 - 10 000
Max. digging depth	mm	-	-
Breakout force (ISO) (Normal)	kN	-	-
Breakout force (ISO) (Boost)	kN	-	-
Max speed	km/h	19	19
Tail swing radius	mm	-	-
-			



EW220E

Wheeled Excavators

Superior serviceability

Greasing points are grouped together for fast maintenance and filters placed behind wide-opening engine doors.

Reach further, lift more

The new heavy-duty two-piece boom and arm offers a total reach of over 10 meters and increased lifting capacity.

Enhanced controllability

Experience ultimate control of the entire machine from the joysticks, including steering (CDC), tiltrotator, blade and outriggers.

Steelwrist® tiltrotator

The factory-fitted Steelwrist® tiltrotator offers ultimate control using the new joysticks and machine display.



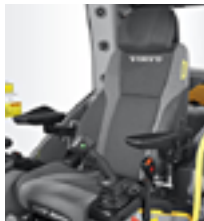
		EW220E	EW180E	EW160E
Operating weight	kg	22 180	18 700 - 20 800	16 200 - 18 200
Gross power	kW	129	129	115
... at engine speed	r/min	1 800	2 000	1 900
Bucket capacity	m ³	1	0.87	0.78
Max lifting capacity	kg	8 500	9 800	6 200
... at reach / height	m	6.0 / 1.5	4.5 / 3	4.5 / 3
Max. digging reach	mm	10 150	10 000	9 300
Max. digging depth	mm	6 310	6 000	5 700
Breakout force (ISO) (Normal)	kN	132	-	-
Breakout force (ISO) (Boost)	kN	117	136	126
Max speed	km/h	30	5 - 8.7 / 20 - 35 / 4	5 - 8.7 / 20 - 35 / 4
Tail swing radius	mm	-	2 550	-

Based on machine configuration:

EW220E: 5.72 m 2-piece boom with 2.6 m arm

EW180E: 2 piece boom / 2.6m Arm / Front dozer blade and rear outrigger

EW160E: 2 piece boom / 2.6m Arm / Front dozer blade and rear outrigger



EWRI30E

Wheeled Excavators

Compact machine, big performance

- Shortest rear (1.55m) and front swing radius (1.81m)
- In-line outriggers for additional compactness (Option)
- Fixed mounted boom with no pivot
- 2-pieces boom: work closer to the machine

Enhanced versatility

- 4-wheel steering (Option)
- Divided blades: level the machine in a wider variety of locations (Option)
- Take on any angle with Steelwrist® tiltrotators

Boost uptime

- Axle-mounted mudguards: cleaner machine
- Attachment Management System
- Volvo Active Care
- Genuine Volvo Parts
- Maintenance & Repair agreements

Do more

- Travel up to 35km/h
- Boom Suspension System reduces bouncing (Option)
- Steelwrist® Auto Connect Quick Coupler: attach hydraulic tools directly from the cab
- Dig Assist apps: more accurate, faster digging process (Option)

A clearer view

- Volvo Smart View: real-time, overhead view
- Welcome lights (Option)
- LED work light packages



		EWR170E	EWR150E	EWR130E
Operating weight	kg	17 950-19 200	15 400 - 17 900	12 900 - 14 400
Gross power	kW	115	105	90
... at engine speed	r/min	2 000	2 000	2 000
Bucket capacity	m ³	0.7	0.73	0.73
Max lifting capacity	kg	5 500	5 900	5 900
... at reach / height	m	6.0/1.5	4.5 / 1.5	4.5 / 1.5
Max. digging reach	mm	9 360	8 670	8 670
Max. digging depth	mm	5 750	5 100	5 100
Breakout force (ISO) (Normal)	kN	-	-	-
Breakout force (ISO) (Boost)	kN	126	108.5	108.5
Max speed	km/h	35	20/30/35	20 / 30 / 35
Tail swing radius	mm	1 790	1 720	1 550

Based on machine configuration:

EWR170E: 2-piece boom / 2.6 m arm / blade and outrigger

EWR150E: 2.45m (8'0") arm / 4.7m (15'5") 2 piece boom

EWR130E: 4.85 m 2-piece boom and 2.4 m arm



SD160B

Soil Compactors

Drum performance

Volvo's advanced drum control system delivers multiple frequencies, dual amplitude, and optimized centrifugal force.

High quality components

The compactor features the highest quality components, clever routing and clean design.



Compact Assist

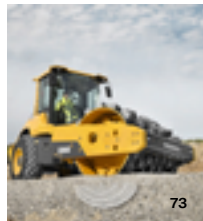
The Compact Assist option improves compaction efficiency by preventing unnecessary passes and identifying areas that might not have achieved ideal compaction.

Volvo engine

The perfectly optimized Volvo engine delivers high torque at low rpm for superior performance and low fuel consumption.

		SD160B	SD135B	SD115B	SD75B	SD45B
Operating weight (with ROPS)	kg	-	-	-	-	4 948
Operating weight (with Cab & inside scraper)	kg	16 691	12 600	11 743	7 192	5 288
Centrifugal force	kN	291 / 249	281 / 249	258 / 242	139 / 121	93 / 75
Vibration frequency	Hz	23.3 - 31.3 (5x frequency)	30.8 / 33.8	30.8 / 33.8	30.8 / 33.8	27.5 / 30.8
Optional 5x frequency (High Amplitude)	Hz	-	23.3 / 30.8	23.3 / 30.8	23.3 - 30.8	-
Gradeability	%	58	65	65	65	45
Rated engine power	kW	110	110	110	55.4	55
Amplitude	mm	1.86 / 1.37	1.87 / 1.38	1.92 / 1.5	1.94 / 1.41	1.99
Drum width	mm	2 134	2 134	2 134	1 676	1 372
Articulation angle	°	+/- 35	+/- 35	+/- 35	+/- 38	41
Oscillation angle	°	+/- 12	+/- 12	+/- 12	+/- 12	12

Based on Smooth drum configuration



DD105 OSC

Asphalt Compactors

Compact Assist

- Intelligent Compaction System from Volvo
- Real-time insight into the work
- Pass mapping
- Temperature mapping

Oscillatory drum (DD105 OSC)

- Front vibratory drum with dual amplitudes
- Rear oscillatory drum with hardened steel drum
- Compact thin lifts, improve smoothness and achieve joint density

Maintenance made easy

- Easy access to all maintenance points
- Fuses and relays stored in cab
- Swing-up engine hood
- Single key for all access points



Industry-leading cab

- Low noise level
- Seamless visibility to drum edges, spray bars and worksite
- Sliding/rotating operator seat
- Industry-leading climate control system
- Ergonomic controls

Primed for productivity

- Low positioned water tank: increased visibility, ground-level access
- Dual water pumps
- Anti-Slip Control
- Offset steering

Efficient engine

- Adaptive engine power
- Fuel efficiency
- Eco mode, Auto idle
- Variable speed fan drive

Volvo Services

- CareTrack telematics system
- Customer Support Agreements
- Genuine Volvo Parts

		DD105 OSC	DD105	DD25B	DD15
Operating weight (with ROPS)	kg	10 103	10 325	2 515* - 2 620**	1 529* - 1 633**
Drum or rolling width	mm	1 680* - 1 680**	1 680* - 1 680**	1 000* - 1 200**	900* - 1000**
Rated engine power	kW	86.3	86.3	18.2	12.2
Vibration frequency	Hz	40 / 50	40 / 50	55 / 66.7	66.7
Amplitude	mm	1.37	0.86 / 0.45	0.54* - 0.5**	0.37* - 0.4**
Overall length	mm	4 650	4 650	2 540	2 035
Overall width	mm	1 838	1 838	1 090* - 1 290**	1 018* - 1 085**
Overall height	mm	3 000	3 000	2 955	2 240
Configuration		Oscillatory	Vibratory	Vibratory	

DD105 OSC, DD105: Operating weight measured incl. 50% fuel, 50% water, 75 kg / 165 lb operator

Amplitude should be denoted tangential

*Narrow drum

**Wide drum



P8820D ABG

Tracked Pavers

Pave in comfort

- Intuitive EPM3, including Settings Manager
- Low noise levels
- Storage areas for screed/paving panels and tool box
- High-visibility steps and handrails
- Pave Assist, powered by Volvo Co-Pilot (option)

Screed technology

- VB79/89 for all profiles, including special crown
- Durable, easy to maintain tamper bars
- Screed tensioning device
- Quick coupling system
- Hydraulic end-gates, featuring power float (option)

See more, do more

- Flat engine hood
- Side glazed inserts & near-field mirrors
- Home light functionality
- Lighting kits

Uptime

- Easy access to service points
- Service Interval Manager
- CareTrack – easy machine monitoring
- Care Kits

Faultless finish

- Ballast paving, Cement-Treated Base and Roller Compacted Concrete compatible
- Automatic track tensioner
- 3D levelling system: plug-and-play
- Screed Load (option)
- Soft Dock (option)



		P8820D ABG	P7820D ABG	P6820D ABG	P4820D ABG	P2820D ABG
Engine type		Volvo D8J	Volvo D8J	Volvo D6J	Volvo D4J	Volvo D3.8H
Engine power	kW	200	175	140	98	55.4
At engine speed	r/min	2 000	1 800	2 000	2 200	2 200
Engine emission		EU Stage V	Stage V	Stage V	Stage V	EU Stage V
Basic width	m	2.5	2.5	2.5	2.5	1.74 (tractor only) 1.8 (with screed)
Maximum paving width	m	13	11	10	6.5	4.5
Paving output	t/h	1 100	900	700	500	330 with single conveyor 230 with double conveyor
Maximum layer thickness	mm	300	300	300	300	250
Hopper capacity	t	14.7	13.5	13.5	12.5	9
Tractor weight	kg	17 350	14 900	14 350	12 470	8 155
-						



P6870D ABG

Wheeled Pavers

Superior traction

- Choice of drive concept: 6x6 or 6x4
- Large wheels for high drive force
- Load dependent torque control prevents wheel spin
- Hydraulic self-leveling suspension system with three-point balance

Paving made easy

- Intuitive Electronic Paver Manager system
- Integrated levelling equipment
- Hopper lock from the platform
- Pave Assist, powered by Volvo Co-Pilot (Option)

State-of-the-art servicing

- Ground level access to fuel tank, emulsion tank and AdBlue filler neck
- Central lubrication point, accessed from the platform
- CareTrack: easy machine monitoring
- Care Kits

Industry-leading screed technology

- Range of screeds to pave up to 9 meters
- VB79 for all profiles, including special crown
- Quick coupling system
- Fully-hardened tamper bars

Every angle in view

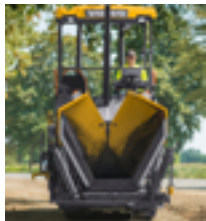
- Flat engine hood
- Glazed areas at the side of the platform
- Near-field mirrors
- Home light functionality
- Volvo Smart View (Option)

The operator's choice

- Quiet operation
- All-weather roof with sliding extensions
- Footrests, armrests, extendable seats

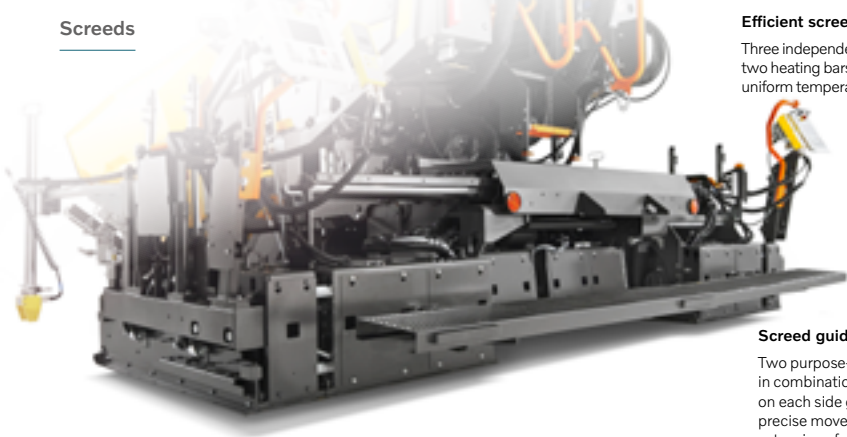


		P6870D ABG	P5870C ABG	P5770C ABG	P2870D ABG
Engine type		Volvo D6J	Volvo D6H	Volvo D6H	Volvo D3.8H
Engine power	kW	129	129	129	55.4
At engine speed	r/min	2 000	2 000	2 000	2 200
Engine emission		EU Stage V	Stage IIIB / Tier 4i	Stage IIIB / Tier 4i	EU Stage V
Basic width	m	2.4	2.5	2.5	1.74 (tractor only) 1.8 (with screed)
Maximum paving width	m	9	8	7.5	4.5
Paving output	t/h	700	600	500	330 with single conveyor 230 with double conveyor
Maximum layer thickness	mm	300	300	300	250
Hopper capacity	t	13	12	12	9
Tractor weight	kg	-	14 500	13 950	7 230



VARIOMATIC SCREEDS

Screeds



Efficient screed heating

Three independent heating circuits, plus two heating bars per segment, reach uniform temperature quickly and efficiently.

Screed guide system

Two purpose-build guide cylinders, in combination with four guide rods, on each side guarantee smooth and precise movement of the hydraulic extensions for longlasting performance.

Intuitive control units

Easily control paving performance thanks to the logically-grouped controls on the intuitive EPM screed control units.

Quick coupling system

Safely add or remove screed extensions in minutes with no special tools required thanks to Volvo's quick coupling system.

Special profiles

The unique VB 79/89 and VDT-V 79/89 screeds are the perfect choice when paving special crown profiles and sloping shoulders in road surfaces.

Screed type		Single tamper screeds						Double tamper screeds			
		VB 30	VB40	VB 78	VB 79	VB 88	VB 89	VDT-V 78	VDT-V 79	VDT-V 88	VDT-V 89
Basic width	m	1.5	1.8	2.5	2.5	3.0	3.0	2.5	2.5	3.0	3.0
Max. paving width ¹	m	4.05	4.55	9.0	9.0	10.0	9.0	9.0	9.0	9.0	9.0
Depth of base plate	mm	335	335	350	350	350	350	350	350	350	350
Heating system											
Electric/Propane		E	E	E/P	E	E/P	E	E/P	E	E/P	E

1 Max. paving width depends on the paver in question



Volvo Services

To ensure your business runs smoothly, Volvo invests in the intelligent engineering of all our machines – but we don't stop there. As your partner, we support what you do with the equipment – how you use it, maintain it, pay for it and even how you sell it. Our portfolio of products and services is designed to complement your machine's performance and boost your profitability. Get started with Volvo Services and customize a Volvo Services Agreement – because your business is our business.





Uptime Services



ActiveCare

Volvo monitors machine data remotely helping to predict potential failures before they occur. Along follows a monthly report that gives you continuous status report on the health of your machines.

Repair

Volvo offers Repair agreements with different levels of coverage, depending on your specific needs.

Care Inspection

Have your machine regularly checked by trained Volvo service technicians.

Increased engine protection

The intelligent software option will automatically idle your engine once coolants, oil pressure, boost pressure or the temperature reach critical levels.

Preventive Maintenance

A Preventive Maintenance agreement helps you to focus on your core business, with peace of mind.

Oil Analysis

Oil Analysis provides vital information on water/coolant, viscosity, dirt, and quantity of metal particles in the oil.

Undercarriage Inspections

The Undercarriage Inspections program offers a full package of services, designed to optimize the lifetime of your undercarriage.

Fuel Efficiency Services



Fuel Efficiency Report

Gain invaluable insight into your machine's fuel efficiency with Fuel Report.

Fuel Advice

Rely on our expertise to help you lower your operating costs.

Operator training

Learn the best operating practices, with real life machines or in simulators. Volvo advanced training simulators put a whole new spin on training.

Engine auto shut down

The Engine auto shut down option offers an easy way to reduce fuel consumption and decrease total costs





Productivity Services



Haul Assist

Powered by Volvo Co-Pilot

Increase the efficiency of your hauling operations.

Dig Assist

Powered by Volvo Co-Pilot

Ensuring maximum accuracy and uptime of your operation.

Load Assist

Powered by Volvo Co-Pilot

Unlock the full potential of your machine's productivity.

Pave Assist

Powered by Volvo Co-Pilot

Gives you the key to unlock first-class paving results.

Compact Assist

Powered by Volvo Co-Pilot

Intelligent Compaction offers real-time insight into the worksite.

Safety Services



CareTrack Anti-Theft

Machine tampering, movement sensors and time fencing functionalities detect unauthorized use, allowing you to track the machine remotely and immobilize it.

Pin-Code Lock

Reduce the risk of your machine being stolen or used without authorization.

Volvo Smart View

To ensure safe rotation in confined working areas, our industry-leading Volvo Smart View offers perfect control.

Speed Limiter

The Speed Limiter option automatically regulates machine speed, eliminating the chance of the operator exceeding the pre-set speed limit.









Financial Services



On-balance financing

Own a machine through regular repayments without investing all of your capital at once.

Insurance

Tax-efficient plans if you want the machine to earn money as you pay for its use.

Off-balance financing

A finance solution with all the options open.

Full service solutions

Your machine, parts & service, finance and insurance all in one offer.



Rental Services



Contact your local Volvo Dealer
for more information

Find your dealer on:
volvoce.com/europe/dealers

Volvo Attachments



Get the most out of your machine with our wide range of Volvo attachments. Every part is just as important as the next, and our selection of Volvo attachments are designed to perfectly match your machine – resulting in one secure and reliable unit, for improved cycle times and better fuel efficiency. We can help you do even more by selecting and customizing the right attachment to fit your needs.





Genuine Volvo Parts



Retain high performance and peace of mind with Genuine Volvo Parts, because every component is part of something bigger. Maintain productivity and machine uptime with our range of readily available, tested and approved parts – all backed by Volvo warranty. Only by using Genuine Volvo Parts, can you protect your investment, extend machine lifecycle and guarantee long-lasting performance.



New Life Services



Volvo Certified Rebuild

Give your hardworking equipment the makeover it deserves while protecting your finances and the environment.

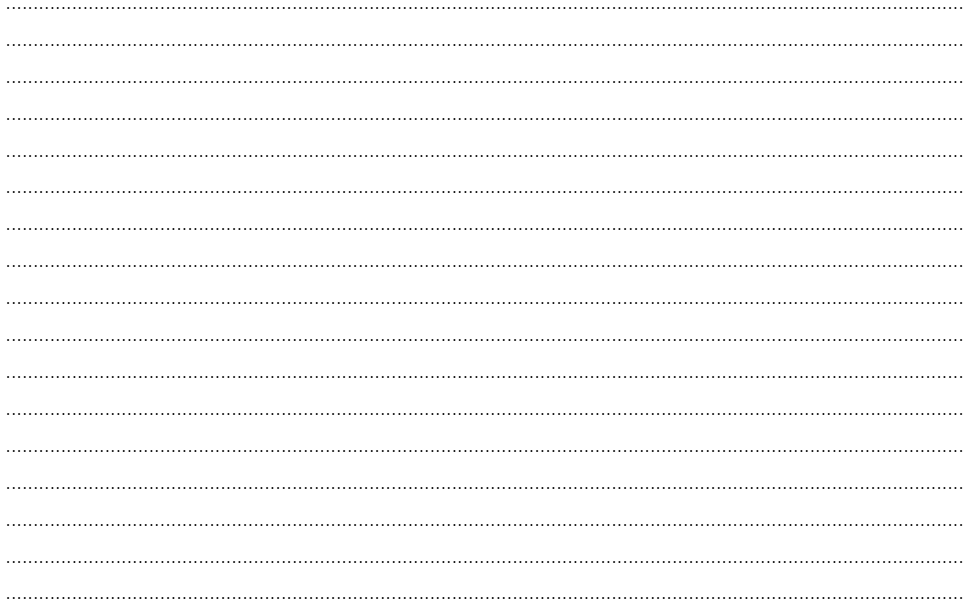
Volvo Reman

Keep your machine running for the long haul – while helping to reduce owning and operating costs.

Volvo Approved Used Equipment

Are you looking for a used excavator, wheel loader or any other Volvo CE machine?

Visit : volvoce.com/europe/dealers



V O L V O